

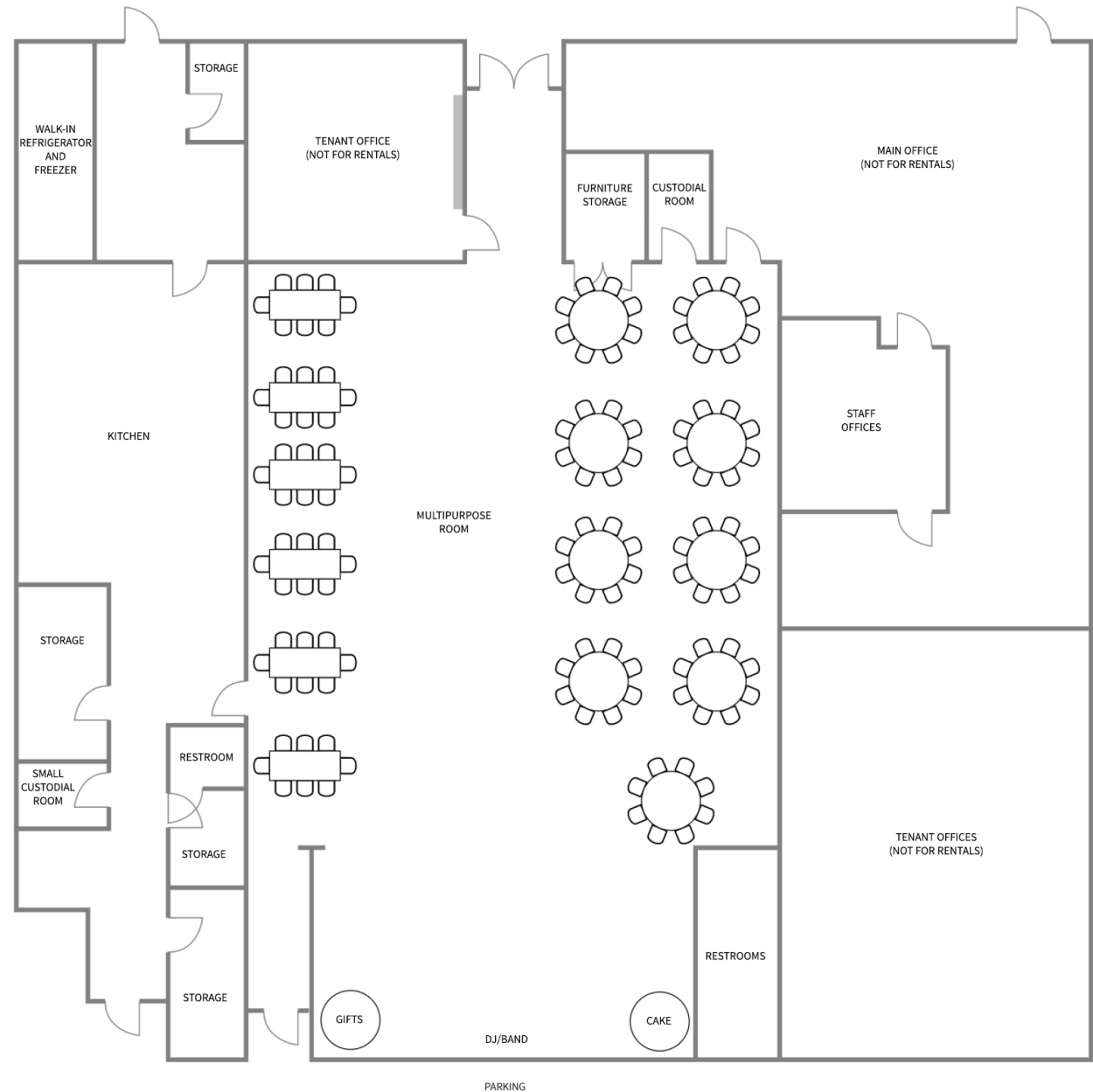
Westside Neighborhood Center Multi-Purpose Room

Sample Event Floor Plan 1



Legend

- Facility furniture:
 - 13 6 ft rectangular tables
 - 4 8 ft rectangular tables
 - 14 60" round tables
 - 1 48" round table
 - 150 maroon-colored folding chairs
- Audio-visual equipment:
 - None available
- Capacity:
 - 150 people



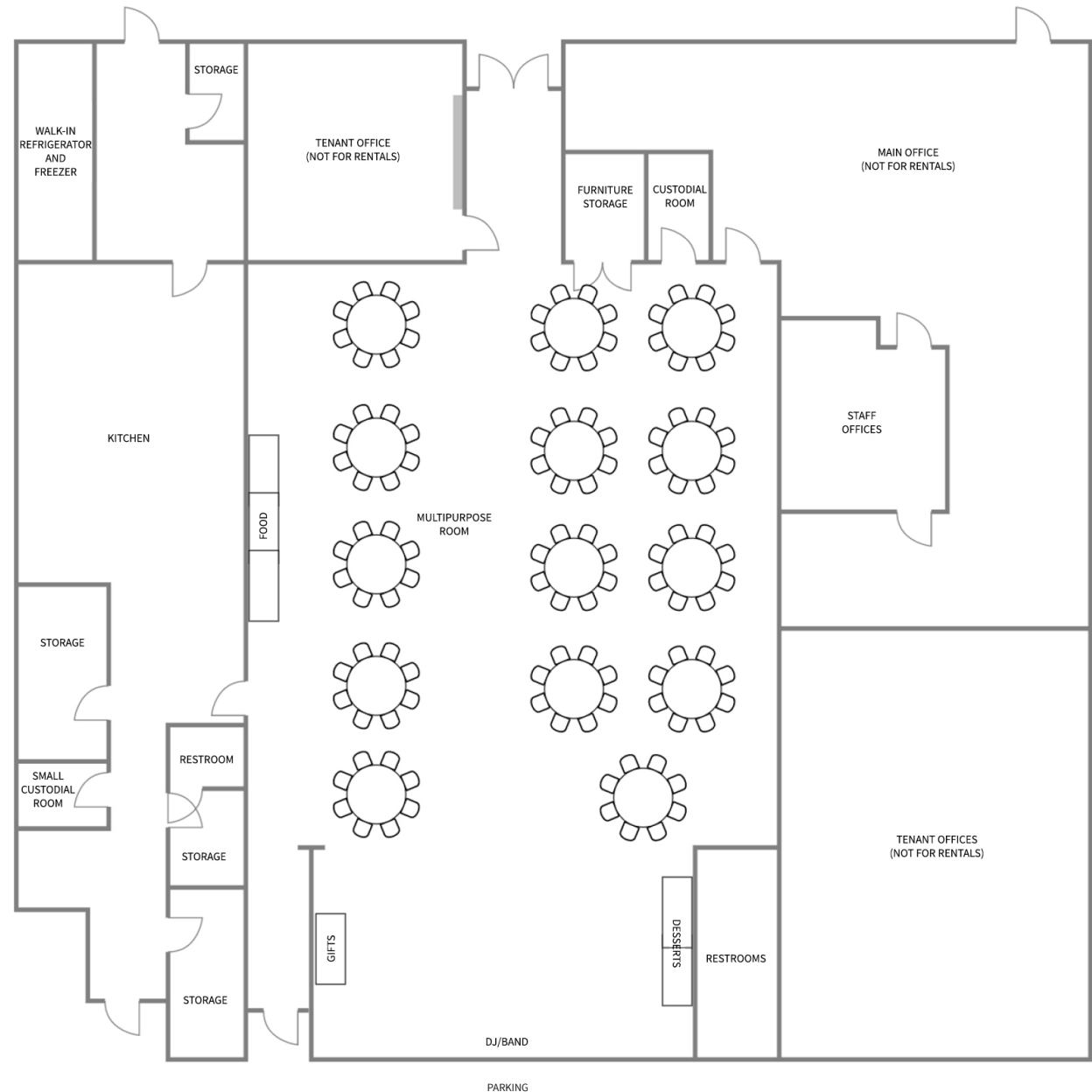
Westside Neighborhood Center Multi-Purpose Room

Sample Event Floor Plan 2



Legend

- Facility furniture:
 - 13 6 ft rectangular tables
 - 4 8 ft rectangular tables
 - 14 60" round tables
 - 1 48" round table
 - 150 maroon-colored folding chairs
- Audio-visual equipment:
 - None available
- Capacity:
 - 150 people



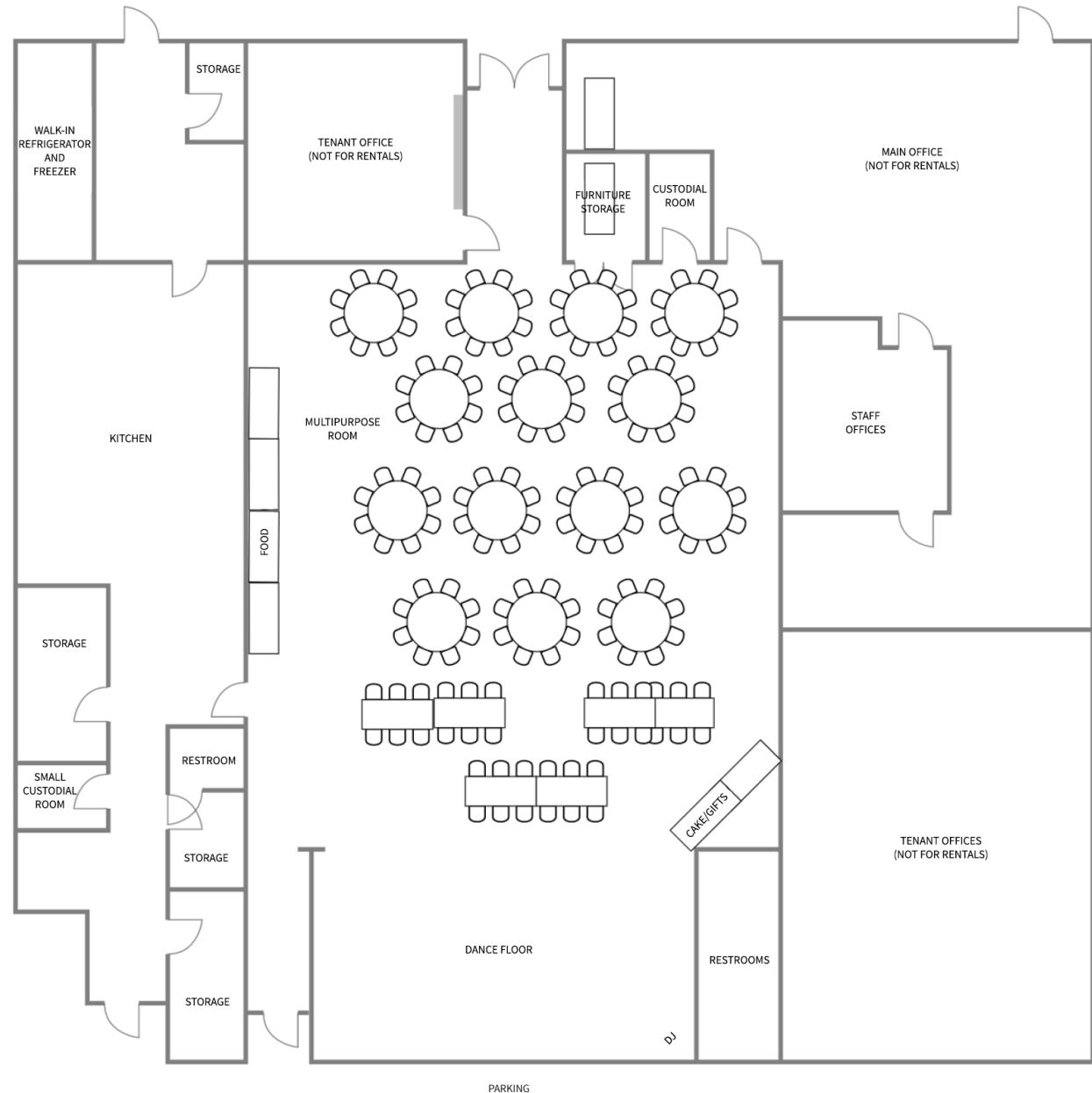
Westside Neighborhood Center Multi-Purpose Room

Sample Event Floor Plan 3



Legend

- Facility furniture:
 - 13 6 ft rectangular tables
 - 4 8 ft rectangular tables
 - 14 60" round tables
 - 1 48" round table
 - 150 maroon-colored folding chairs
- Audio-visual equipment:
 - None available
- Capacity:
 - 150 people



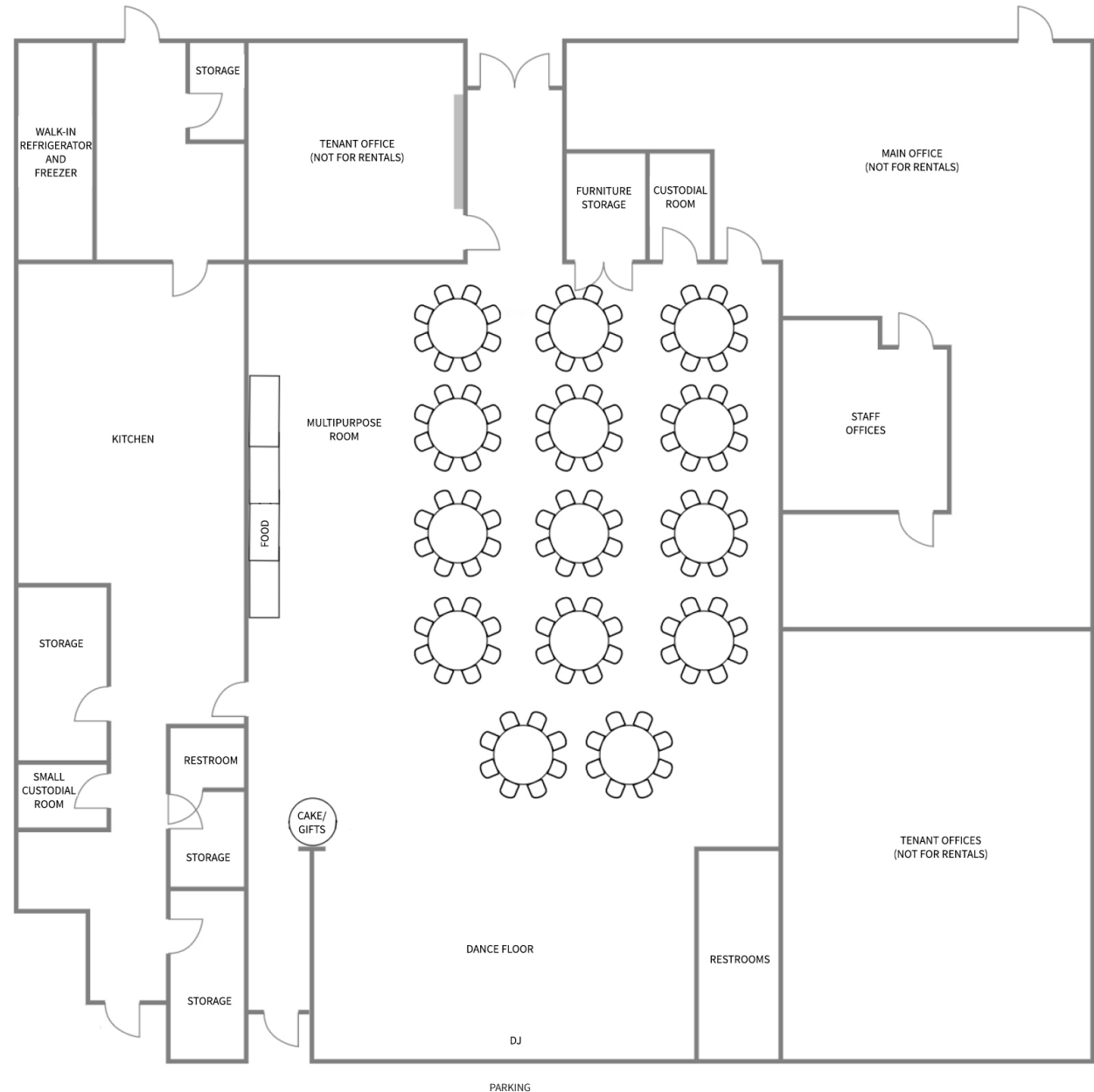
Westside Neighborhood Center Multi-Purpose Room

Sample Event Floor Plan 4



Legend

- Facility furniture:
 - 13 6 ft rectangular tables
 - 4 8 ft rectangular tables
 - 14 60" round tables
 - 1 48" round table
 - 150 maroon-colored folding chairs
- Audio-visual equipment:
 - None available
- Capacity:
 - 150 people



Westside Neighborhood Center Multi-Purpose Room

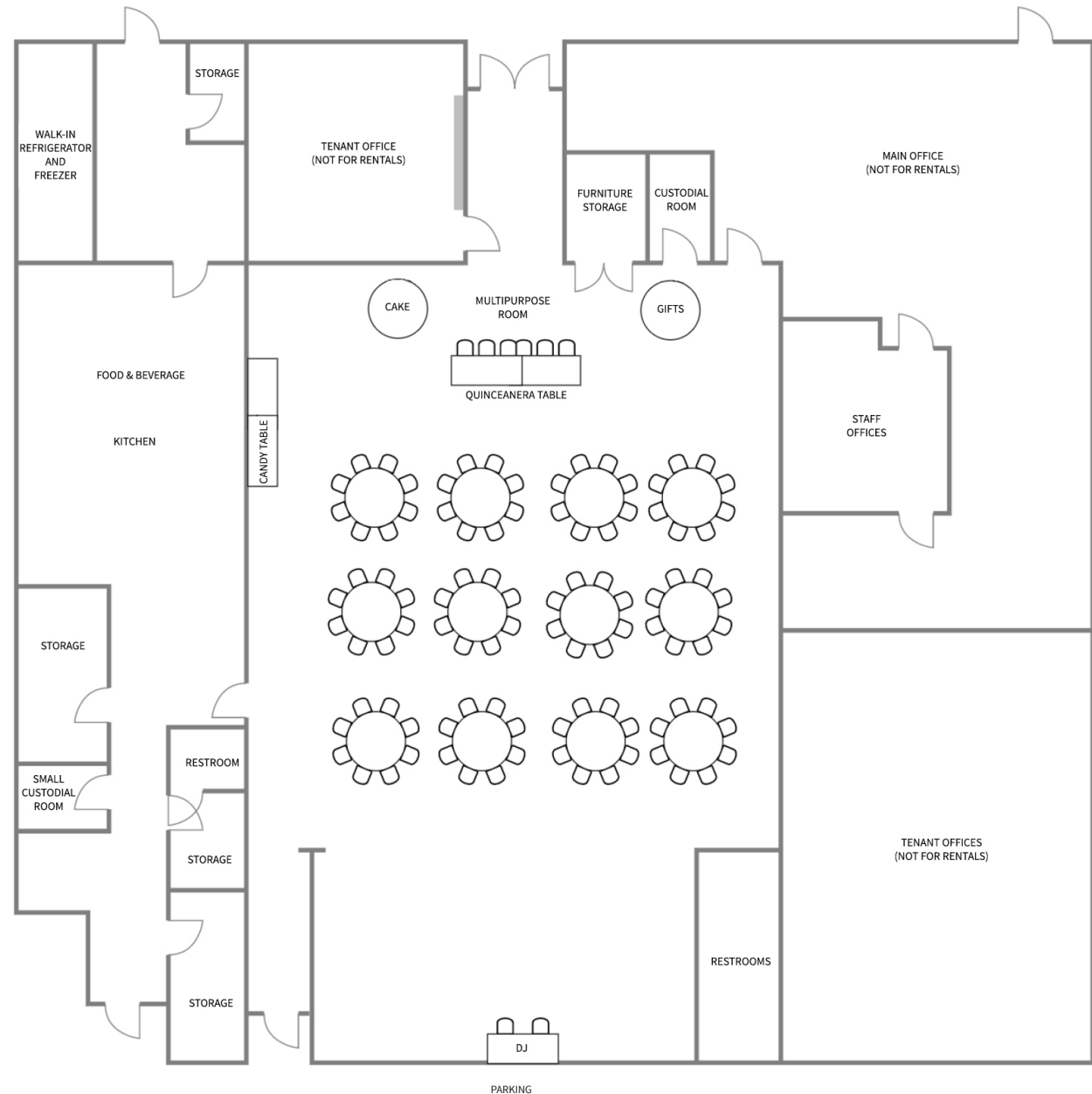
Sample Quinceañera Floor Plan 1

Parks & Recreation



Legend

- Facility furniture:
 - 13 6 ft rectangular tables
 - 4 8 ft rectangular tables
 - 14 60" round tables
 - 1 48" round table
 - 150 maroon-colored folding chairs
- Audio-visual equipment:
 - None available
- Capacity:
 - 150 people



Westside Neighborhood Center Multi-Purpose Room

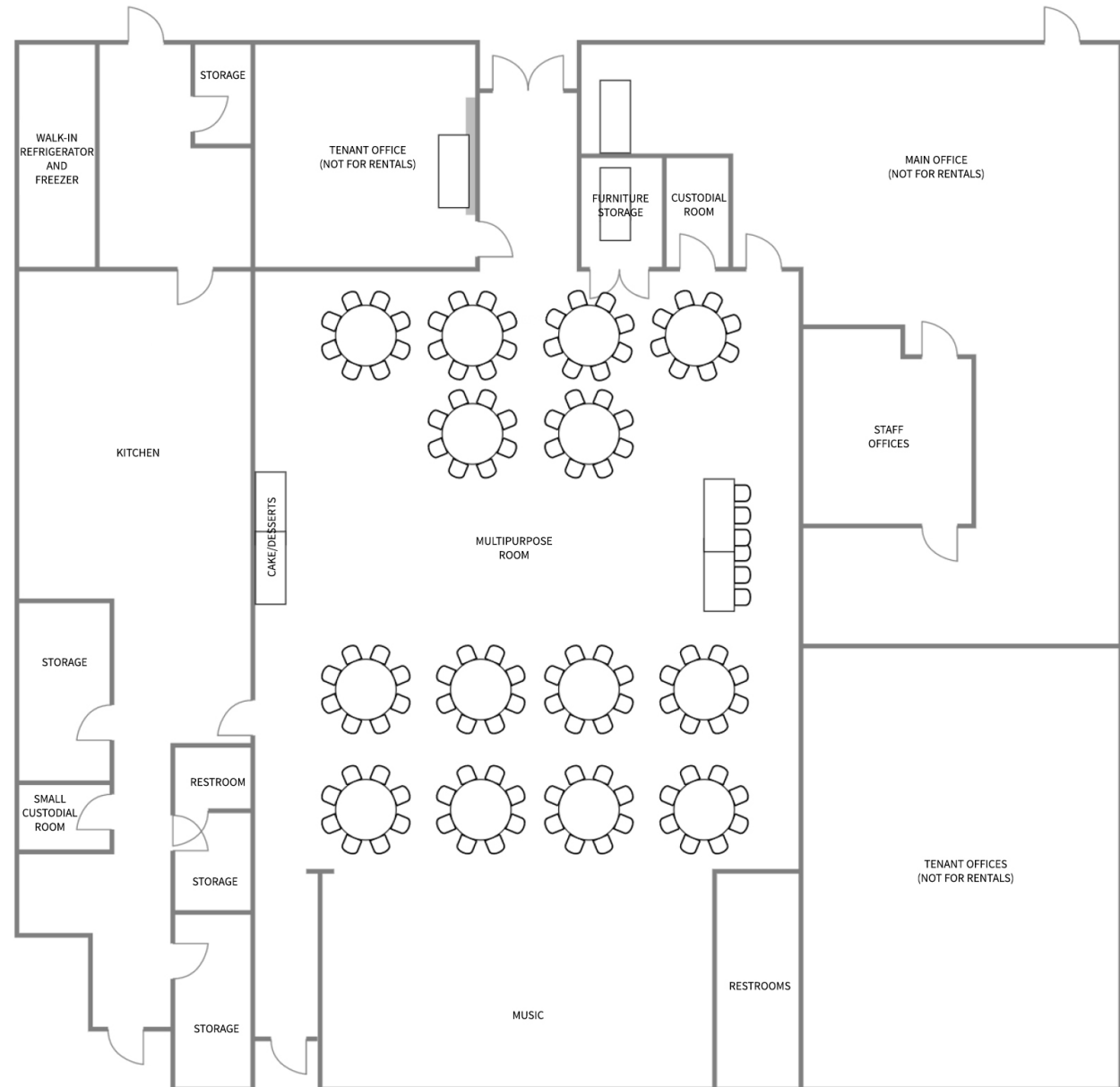
Sample Quinceañera Floor Plan 2

Parks & Recreation



Legend

- Facility furniture:
 - 13 6 ft rectangular tables
 - 4 8 ft rectangular tables
 - 14 60" round tables
 - 1 48" round table
 - 150 maroon-colored folding chairs
- Audio-visual equipment:
 - None available
- Capacity:
 - 150 people



PARKING

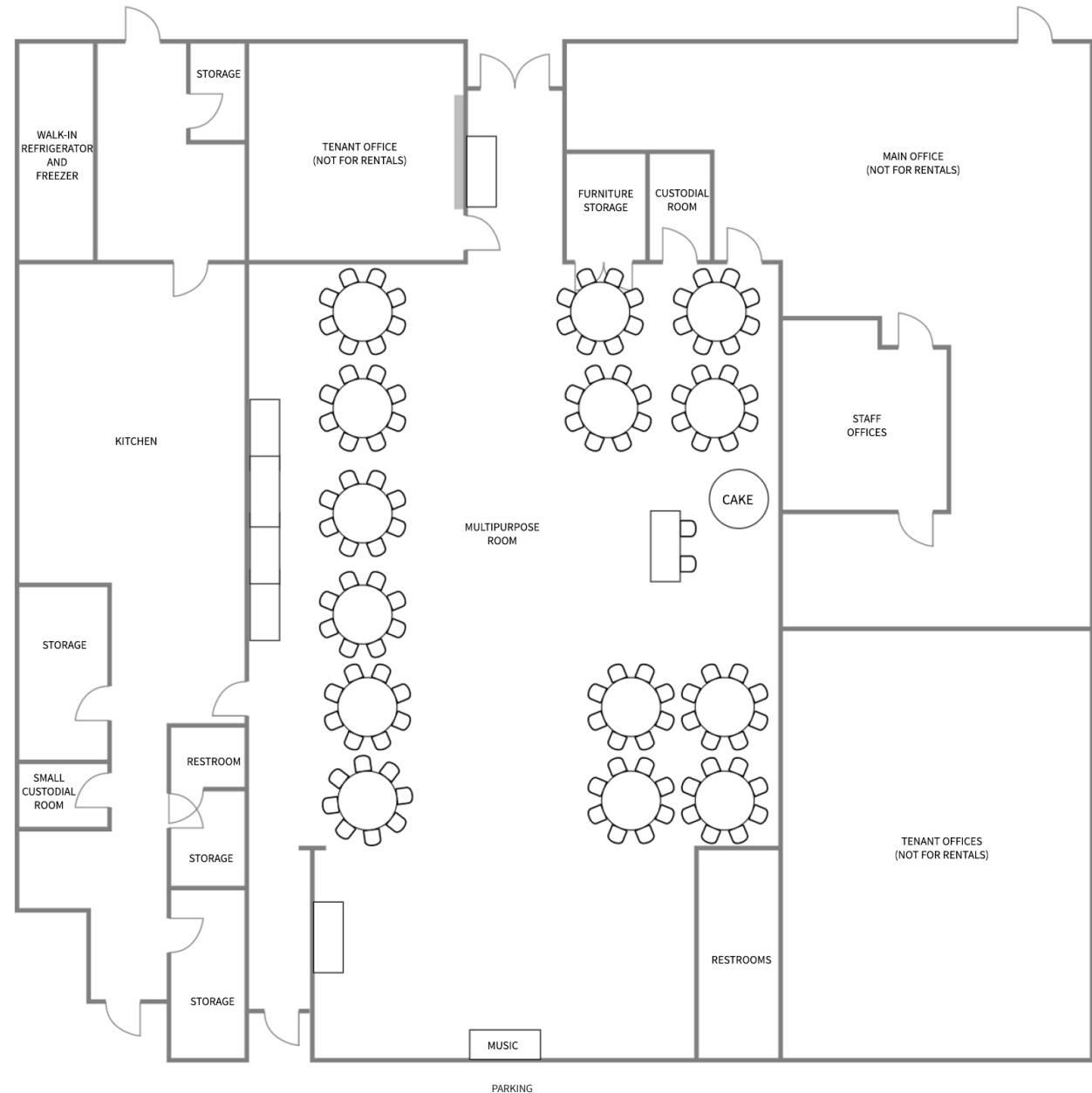
Westside Neighborhood Center Multi-Purpose Room

Sample Wedding Floor Plan 1



Legend

- Facility furniture:
 - 13 6 ft rectangular tables
 - 4 8 ft rectangular tables
 - 14 60" round tables
 - 1 48" round table
 - 150 maroon-colored folding chairs
- Audio-visual equipment:
 - None available
- Capacity:
 - 150 people



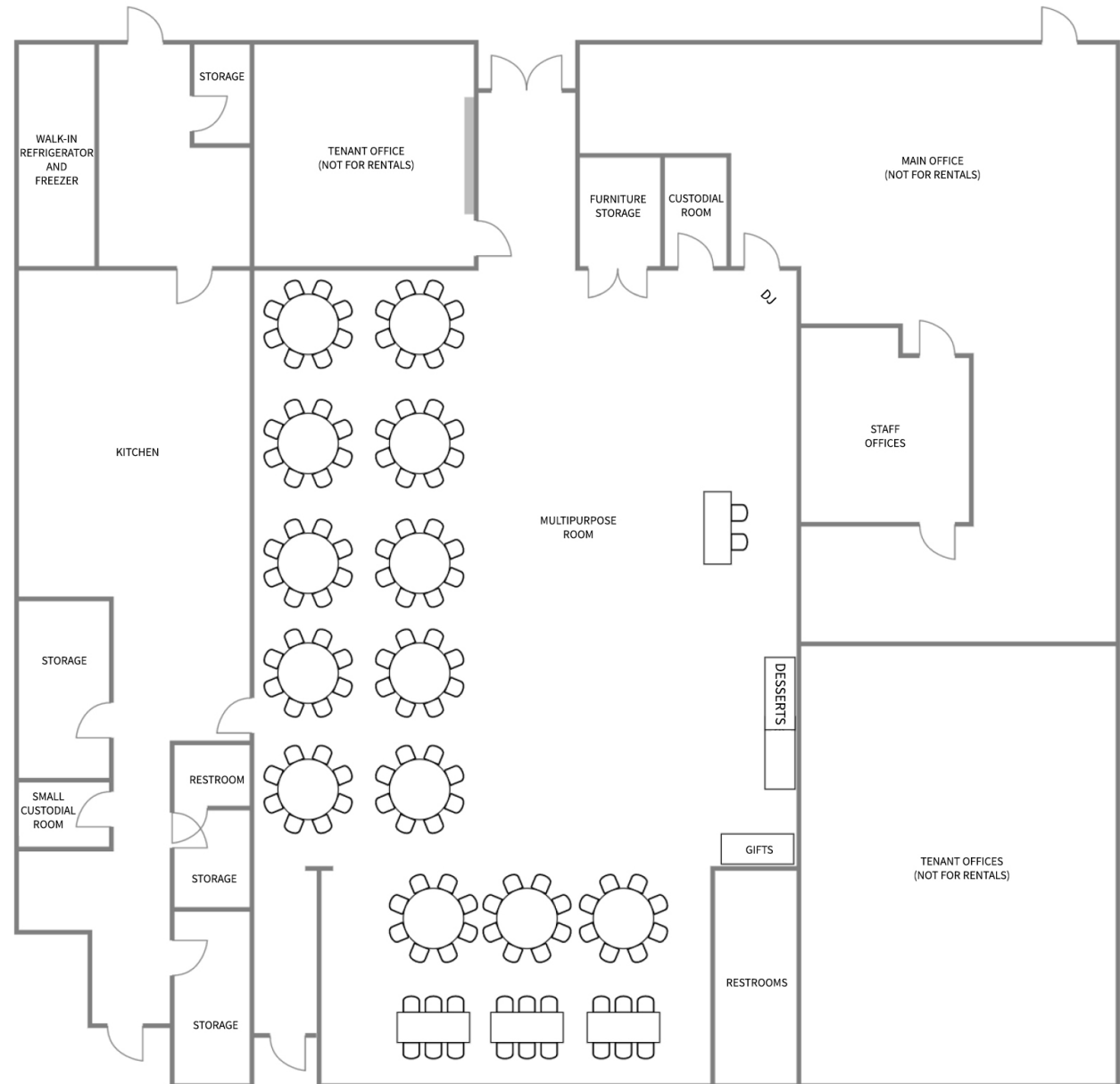
Westside Neighborhood Center Multi-Purpose Room

Sample Wedding Floor Plan 2



Legend

- Facility furniture:
 - 13 6 ft rectangular tables
 - 4 8 ft rectangular tables
 - 14 60" round tables
 - 1 48" round table
 - 150 maroon-colored folding chairs
- Audio-visual equipment:
 - None available
- Capacity:
 - 150 people



PARKING