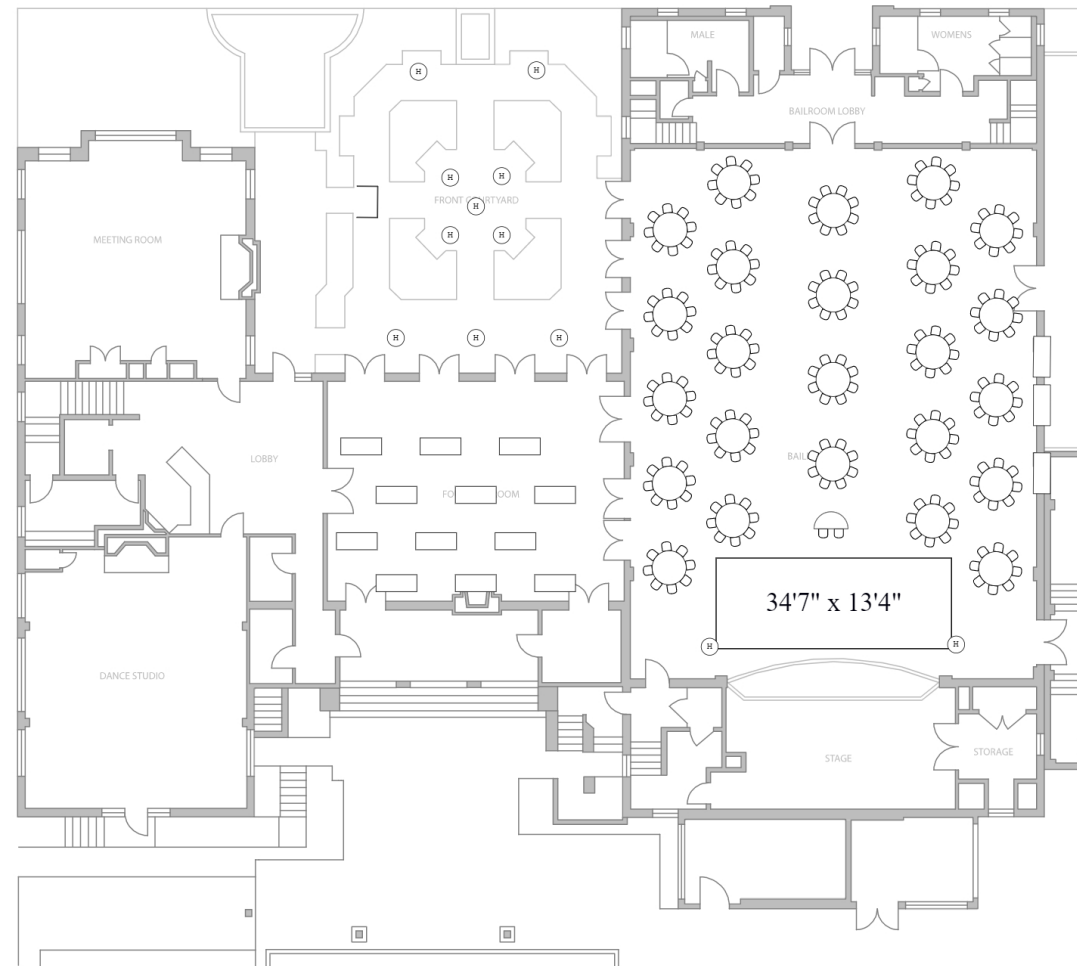


Carrillo Ballroom

Sample reception layout for 194 seated with a dance floor

LEGEND:

- Facility furniture: 30 60" round tables, 27 6" rectangle tables, 2 48" round tables, 12 30" round high/low tables, 2 24" x 48" rectangle table and over 400 MityLite classic stacking chairs.
- Audio-visual equipment: 12' projection screen; 1 mobile lectern, built-in sound system with 1 wired handheld microphone and 1 wireless handheld microphone, various easels, grand piano.
- Capacity: 300 people seated, 400 people cocktail/standing.



Carrillo Ballrom

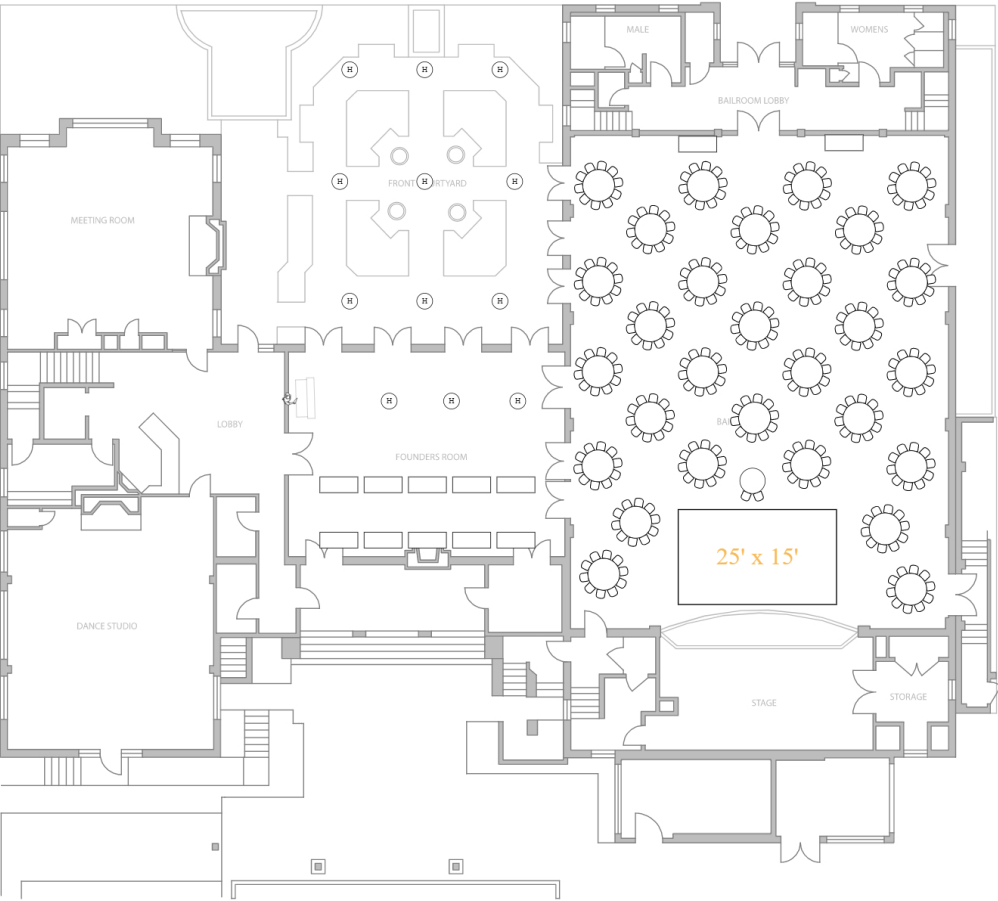
Sample reception layout for 290 seated with a dance floor

LEGEND:

• Facility furniture: 30 60" round tables, 27 6" rectangle tables, 2 48" round tables, 12 30" round high/low tables, 2 24" x 48" rectangle table and over 400 MityLite classic stacking chairs.

• Audio-visual equipment: 12' projection screen; 1 mobile lectern, built-in sound system with 1 wired handheld microphone and 1 wireless handheld microphone, various easels, grand piano.

•Capacity: 300 people seated, 400 people cocktail/standing.



Carrillo Ballroom

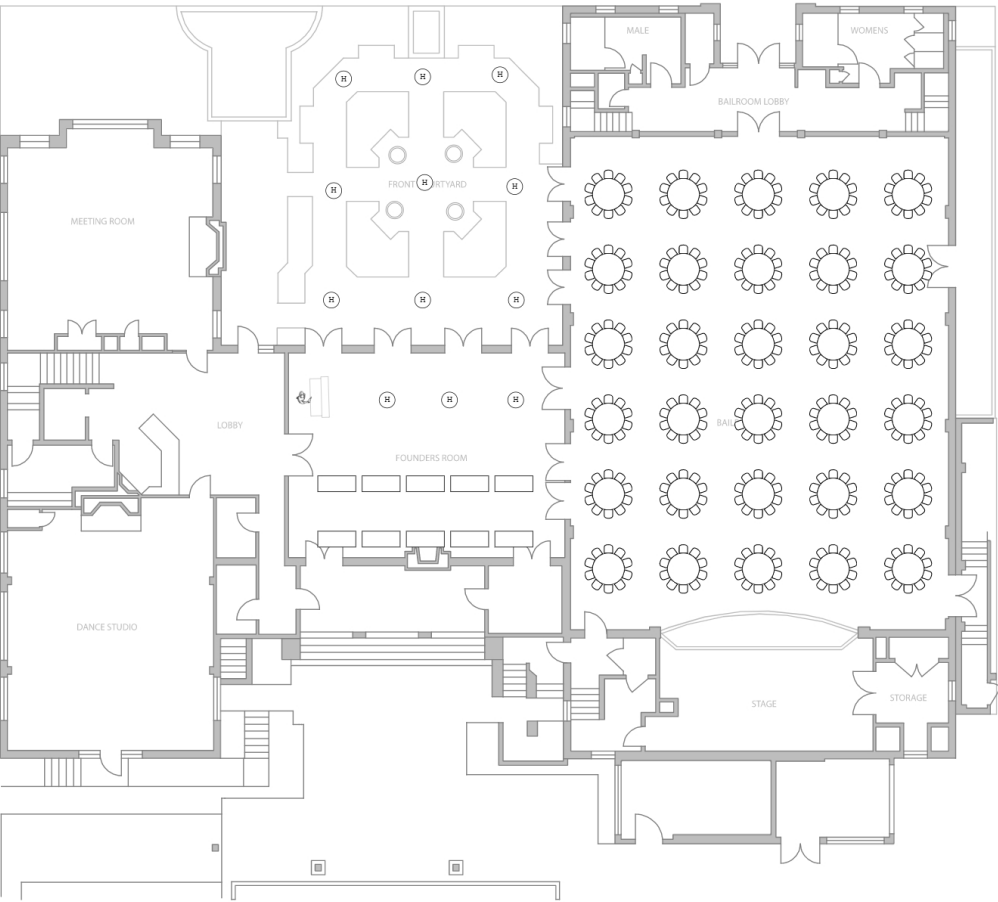
Sample reception layout for 300 seated

LEGEND:

• Facility furniture: 30 60" round tables, 27 6" rectangle tables, 2 48" round tables, 12 30" round high/low tables, 2 24" x 48" rectangle table and over 400 MityLite classic stacking chairs.

• Audio-visual equipment: 12' projection screen; 1 mobile lectern, built-in sound system with 1 wired handheld microphone and 1 wireless handheld microphone, various easels, grand piano.

•Capacity: 300 people seated, 400 people cocktail/standing.



Carrillo Ballroom

Sample concert/presentation layout for 390 seated

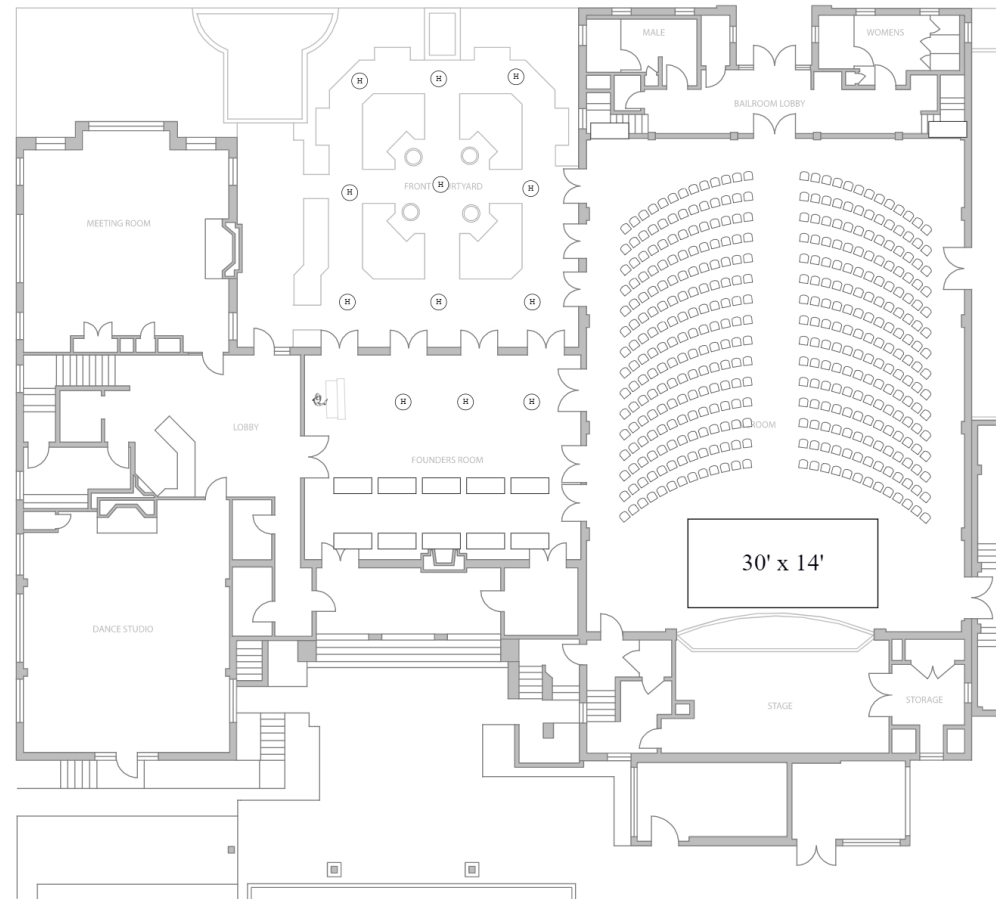


LEGEND:

• Facility furniture: 30 60" round tables, 27 6" rectangle tables, 2 48" round tables, 12 30" round high/low tables, 2 24" x 48" rectangle table and over 400 MityLite classic stacking chairs.

• Audio-visual equipment: 12' projection screen; 1 mobile lectern, built-in sound system with 1 wired handheld microphone and 1 wireless handheld microphone, various easels, grand piano.

• Capacity: 300 people seated, 400 people cocktail/standing.



Carrillo Ballroom

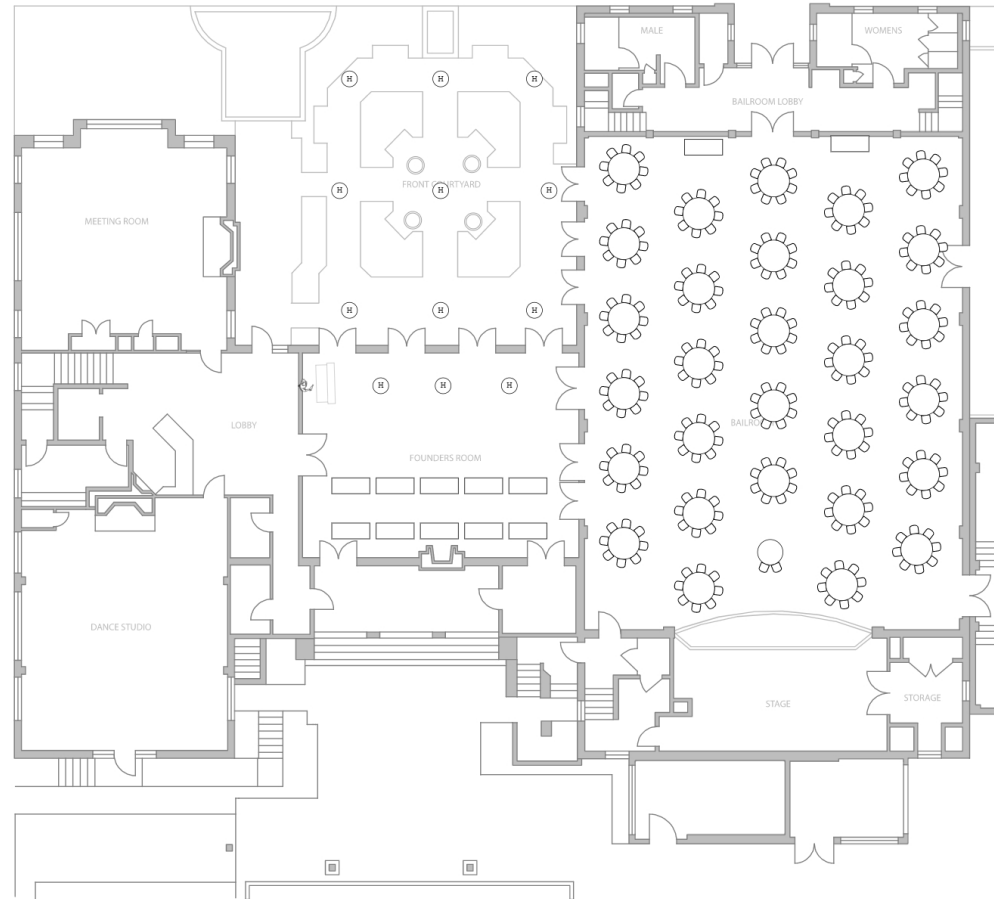
Sample reception layout for 232 seated

LEGEND:

• Facility furniture: 30 60" round tables, 27 6" rectangle tables, 2 48" round tables, 12 30" round high/low tables, 2 24" x 48" rectangle table and over 400 MityLite classic stacking chairs.

• Audio-visual equipment: 12' projection screen; 1 mobile lectern, built-in sound system with 1 wired handheld microphone and 1 wireless handheld microphone, various easels, grand piano.

• Capacity: 300 people seated, 400 people cocktail/standing.

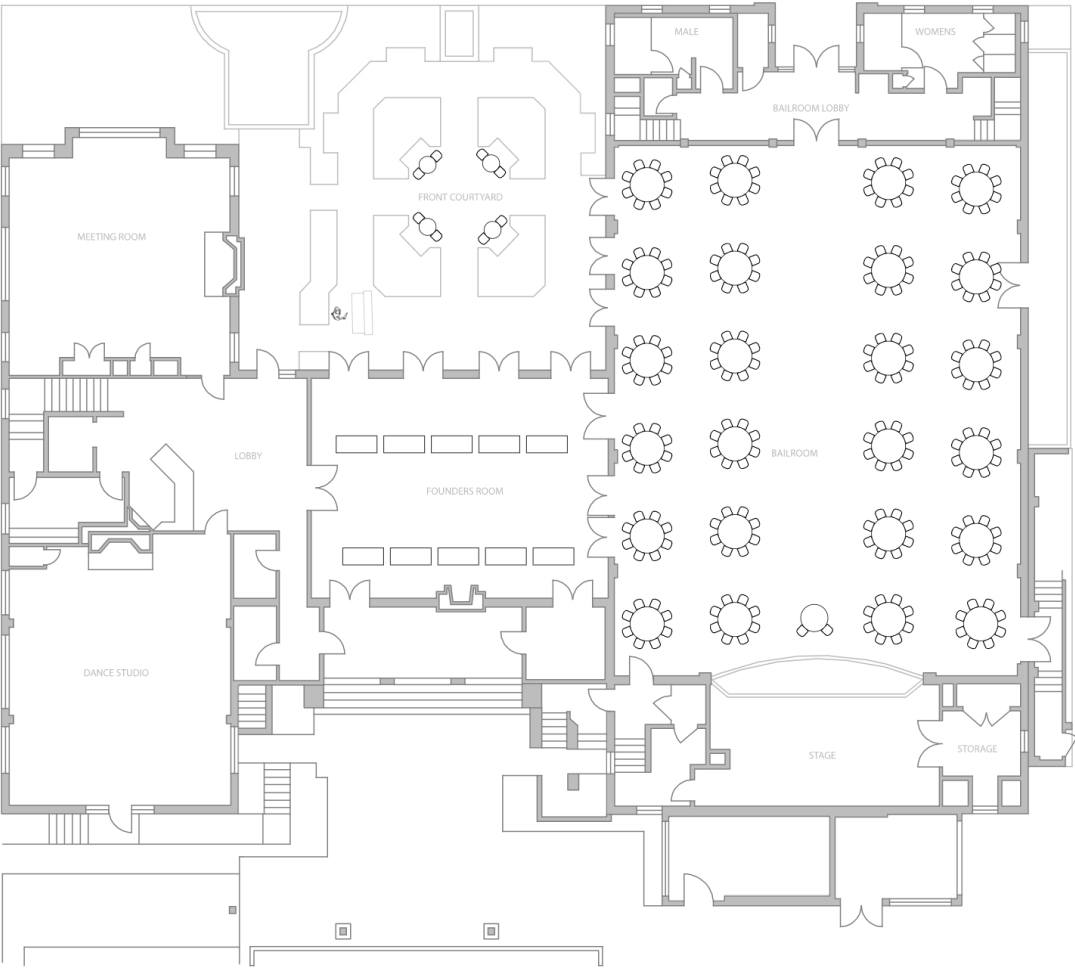


Carrillo Ballroom

Sample reception layout for 190 seated

LEGEND:

- Facility furniture: 30 60" round tables, 27 6" rectangle tables, 2 48" round tables, 12 30" round high/low tables, 2 24" x 48" rectangle table and over 400 MityLite classic stacking chairs.
- Audio-visual equipment: 12' projection screen; 1 mobile lectern, built-in sound system with 1 wired handheld microphone and 1 wireless handheld microphone, various easels, grand piano.
- Capacity: 300 people seated, 400 people cocktail/standing.



Carrillo Ballroom

Sample conference layout for 70 seated with lunch seating

LEGEND:

• Facility furniture: 30 60" round tables, 27 6" rectangle tables, 2 48" round tables, 12 30" round high/low tables, 2 24" x 48" rectangle table and over 400 MityLite classic stacking chairs.

• Audio-visual equipment: 12' projection screen; 1 mobile lectern, built-in sound system with 1 wired handheld microphone and 1 wireless handheld microphone, various easels, grand piano.

• Capacity: 300 people seated, 400 people cocktail/standing.

