



City of Santa Barbara



Get Ready Santa Barbara! Send a Message in 2010, Be Prepared

Volume 1, Issue 3

March 2010

In this Issue:

- Secure It Now! Make Your Property Safer
 - Local Disaster History in March
- Disaster Focus**
- Tsunami
 - City Natural Hazards Map
 - Disaster Update: January 2010 Haiti Earthquake

Upcoming Issue:

- Is Your Place Safe?
- Thunderstorms & Windstorms
- FAQs about Reverse 911®

2010 Upcoming Topics

Secure It Now! Make Your Property Safer

Did you know that 55% of injuries during the Northridge Earthquake occurred due to unsecured building contents like falling bookcases and shelves?

It's important to protect yourself and family from the dangers inside one's home during a disaster. You should secure any object that is:

- 1) heavy enough to hurt you if it falls on you
- 2) fragile or expensive enough to be a significant financial or emotional loss

The first step is identifying the hazards in your own home. The second step is finding out the best way to secure them.

FIND DIRECTIONS FOR SECURING YOUR PROPERTY

http://www.daretoprepare.org/secure_your_stuff.html

Earthquake Country Alliance



How to Secure It: Artwork, Pictures & Mirrors

1. Use a stud finder to find closest wall stud
2. Screw a screw hook into the wall stud so there is barely enough room to slide the framing wire between the wall and hook
3. If the artwork or mirror is large or heavy, you may want to secure it to two (2) studs
4. Secure the bottom corners of the items using museum putty type products to keep them from banging against the wall

Did you know? Cut feet from broken framing glass and mirrors is one of the most common injuries from major earthquakes.

How to Secure It: Tall Furniture

1. Locate wall studs using stud finder
2. Secure each piece of furniture to at least two wall studs, depending on size and weight using
 - Use a nylon strapping kit or
 - 4" L-brackets and 3" lag screws
3. Place heavy and/or large items on lower shelves to prevent them from falling from during an earthquake

Tools of the Trade



Stud Finder and Sensors



Museum Putty



Furniture Strapping Kits

Local Disaster History

1998 California Floods

- Santa Barbara was one of 27 California jurisdictions included in the Gubernatorial Proclamation of a State of Emergency and Presidential Major Disaster Declaration
- Damage assessment for 22 of the 27 counties totaled \$275 to \$300 million

Source: CalEMA

January

Have a plan

February

Check it Out-
Mitigation

March

Secure it
Now!

April

Is Your Place
Safe?

May

Lend a Hand-
Volunteerism

June

Fire Safety

Disaster Focus: Tsunami

Threat to Santa Barbara

Tsunamis, also known as seismic sea waves, are most common along the Pacific Coastal Basin. Tsunamis are enormous waves caused by an underground disturbance, usually an earthquake, landslide or volcanic eruption. The Japanese word *tsu* means "harbor"; *nami* means "wave).

Tsunamis can travel up to 500 miles per hour, the speed of a jetliner. Tsunamis can hit land with a series of waves, known as a wave train. Waves sometimes top 100 feet in height and 60 feet in length. Often the first wave is not the largest and the danger from a tsunami can last several hours for several hundred miles of coastland. Ocean waves can reach hundreds of feet inland.

On February 27th, an earthquake in Chile generated a tsunami that caused minor damage in Ventura and Santa Monica, CA.

Tsunami Awareness Week: March 22-26, 2010



2004 Sumatra tsunami hitting Koh Pu, Thailand, Pictures courtesy of Reuters

On December 12, 1812 a tsunami struck the Santa Barbara and Ventura coastline shortly after a large earthquake. Though reports of the size of this tsunami has been debated, the event was large enough to inundate low-land areas and cause damage to nearby ships

Tsunami Response Steps

- **Be alert!** If you feel an earthquake or become aware that one has occurred, do not stay in an area that is susceptible to a tsunami... move to high ground!
- **Watch the tides!** An approaching tsunami is sometimes preceded by a rise or fall of water levels or strange bubbling in the tidal areas. If this occurs, it could be a sign that a tsunami is on its way.
- **Stay tuned in!** Television, radio, and internet resources are places to find out whether a tsunami is heading your way. Emergency evacuation procedures will be relayed as soon as possible.

What's Santa Barbara Doing to Be Tsunami Ready?

- 2008** Draft Tsunami Plan is created with the assistance of California Department of Transportation, County OES, Sheriff's Department, US Coast Guard, California Highway Patrol, the American Red Cross, and City Police, Fire and Waterfront Departments. The Draft Tsunami Plan was then tested with a Table Top Exercise and Functional Exercise with City staff and outside agencies.
- 2009** The City is recognized by NOAA as a Storm Ready City, the first phase in becoming a Tsunami Ready City
- 2010** City is currently pursuing a Tsunami Ready designation

What is the Santa Barbara County Sheriff's Reverse 911®?

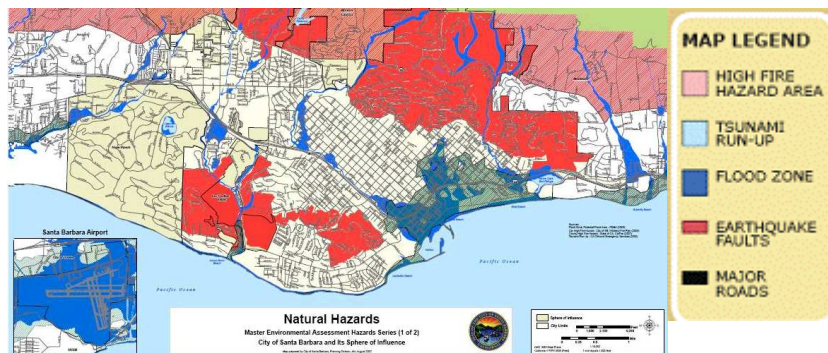


Check out the March Newsletter for more information on County Sheriff's Department Reverse 911®.

There will be information on registering your phone number, cell phone and e-mail address.

Keep Your Eyes Open!

City of Santa Barbara Natural Hazards Map



City of Santa Barbara Office of Emergency Services



We're on the web!

<http://www.santabarbaraca.gov/Resident/OES>

Created by: Lindsay Barker, MPH
OES Volunteer Public Education Coordinator
E-mail: LBarker@SantaBarbaraCA.gov

Disaster Update January 2010 Haiti Earthquake

- As many as 200,000 people are thought to have died in the earthquake
- Initial relief efforts are estimated to cost \$3 billion
- There has been a mass exodus of over 400,000 people leaving Port-au-Prince, the nation's capital for rural areas
- Food distribution is still a challenge but over 3.2 million people have been reached with food supplies since the earthquake occurred

Impact Your World and Give Your Support

<http://www.cnn.com/SPECIALS/2007/impact/>