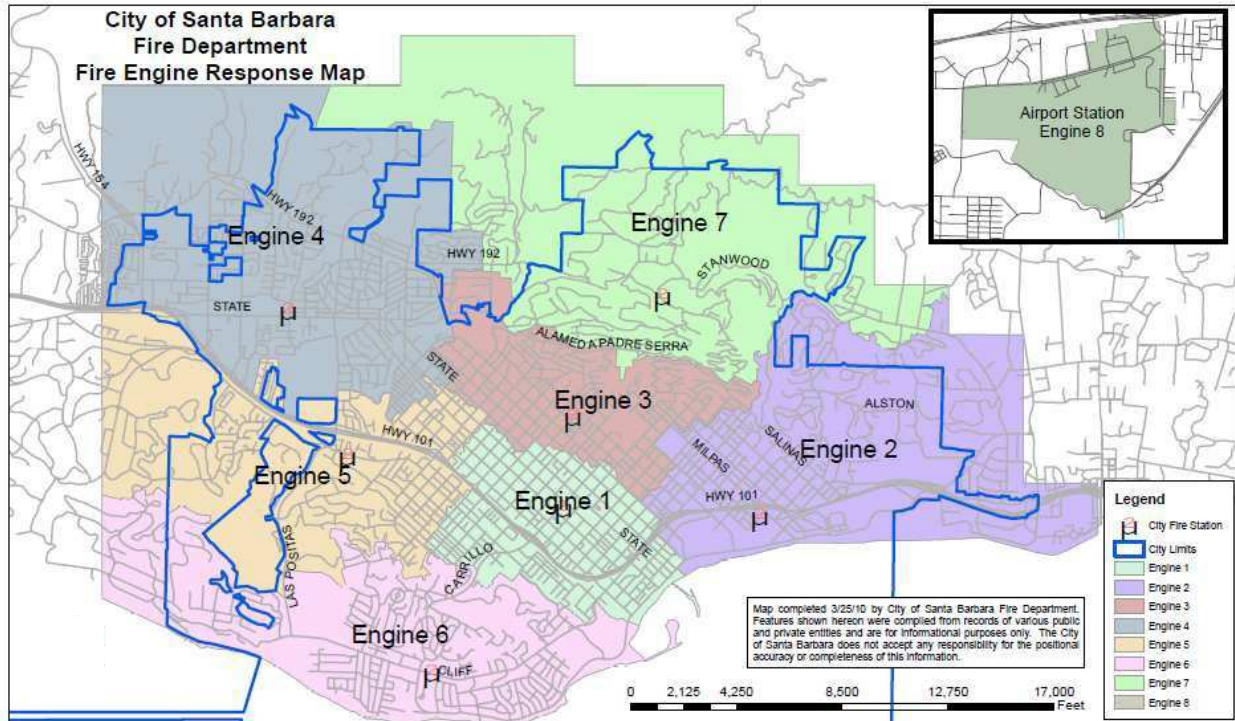


# City of Santa Barbara Fire Stations and Buildings

## Station Districts:



### Station 1 (Headquarters)

121 W Carrillo St  
Santa Barbara, CA 93101  
805) 965-5254 (for all stations)



Notes: Responds to the Downtown corridor, provides technical and aerial rescue capabilities. Rescue One is a two person fast response medical unit staffed by firefighters of the 4 person Truck/Heavy Rescue Squad. Truck crew responds with either Ladder Truck or Heavy Rescue Squad dependant on the type of call, and equipment required. Station One has been recently remodeled, with seismic reinforcements and improvements to crew living quarters. Station One has a large classroom that serves double purpose as the City's Emergency Operating Center, for disaster management.

**Station 2**

819 Cacique St  
Santa Barbara, CA 93103



Notes: Responds to the lower Eastside, Coast Village Road, Alston and Eucalyptus Roads Areas. Firefighters assigned to Station 2 are all certified as California State Fire Marshal hazardous materials spill response specialists. They will respond with HazMat 1 to mitigate chemical, radiological or other problems as part of a regional team, which is also staffed with firefighters from Carpinteria Summerland Fire Department, and Montecito Fire Department.

---

**Station 3**

415 E Sola St  
Santa Barbara, CA 93101



Notes: Responds to the Upper East Side, Riviera, Mission Area, second in on many other districts. Built in 1929, this is SBF D's oldest and most picturesque stations located in a residential neighborhood. Station 3 crews are also cross trained to provide coverage for the airport crews at Station 8.

**Station 4**

19 N Ontare Rd  
Santa Barbara, CA 93105



Notes: Responds to the City's north side residential and business district, San Roque and upper Ontare Areas. With ongoing development of the foothill areas this station will cross staff a Type III engine which is more specialized for tight access found in Wildland urban interface areas.

---

**Station 5**

2505 Modoc Rd  
Santa Barbara, CA 93105



Notes: Responds to the Hidden Valley, West side, and Samarkand Neighborhoods, as well as responding to many transportation accidents on Highway 101. The Special Response vehicle is a Ford F550 Box unit that contains medical equipment capable of handling mass casualty incidents. Crews also help manage the Department's SCBA workshop and maintenance program.

**Station 6**

1802 Cliff Dr  
Santa Barbara, CA 93109



Notes: Responds to the Santa Barbara City College and Mesa Neighborhood areas, provides Water Rescue assistance for Harbor Patrol when needed.

---

**Station 7**

2411 Stanwood Dr  
Santa Barbara, CA 93103



Notes: Responds to the Upper Riviera, Foothill area to the Los Padres National Forest, East to Mission Canyon and West to Montecito. Engine 3-77 is a short wheelbase 4 wheel drive Wildland fire capable unit. Patrol 7 is a pickup truck that has a slip on 100 gallon pump unit for patrol or special access needs.

This station is directly across the street from the Department's "Firescape Garden", which is a nationally recognized demonstration garden featuring plants suitable for defensible space in high fire hazard areas. Station 7 is in the heart of the Wildland Fire Special Assessment District, in which a parcel tax provides multiple benefits for the home owners enhancing defensible space, road clearance projects, vegetation management and chipping services.

### **Station 8 (Airport)**

40 Hartley Pl  
Santa Barbara, CA 93117



Notes: Provides response to aircraft emergencies at Santa Barbara Airport. These are large specialized vehicles that carry 1000 gallons of water and foam and can respond to any area of the airport within 90 seconds. The Station, apparatus and crews meet stringent FAA guidelines for emergency response and are closely monitored to ensure that they do.

---

### **Training Facility**

30 S. Olive Street



Notes: Approximately 1 acre property that has a 4 story concrete training tower, water drafting pit, single story smoke room, storage units and multiple rescue simulators including trench, low angle hillside and vehicle extrication. Also provides a 25 seat training classroom with restrooms. This is also used by many other public safety agencies in the Santa Barbara region.