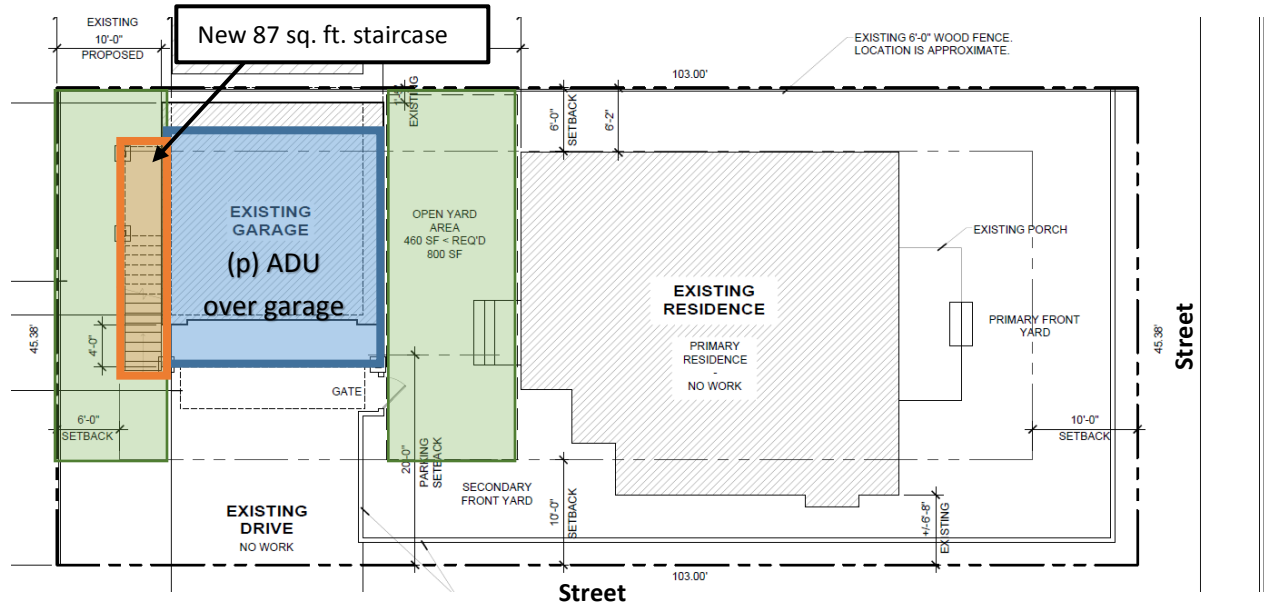


### Open Yard Examples

**Example A: New Staircase in Nonconforming Open Yard**

Lot size: 4,672 sq. ft. (R-M Zone)

(e) open yard = 845 sq. ft.



**Example B: Convert One-Car Garage and 89 sq. ft. Addition in Nonconforming Open Yard**

Lot size: 3,925 sq. ft. (R-2 Zone)

(e) open yard = 400 sq. ft.

