

Chapala Street Amenities

Street Furnishings

Bus Shelters

Traffic Signals

Street Furnishings

News racks and trash & recycling containers are to be located on diagonal corners to allow for access from both sides of both streets at each intersection. The design of these objects are to match the current downtown standard.

Location and design of the Chapala Street light standard will be furnished by the Santa Barbara Public Works Department.

The bicycle hitching post locations will be specified by the Santa Barbara Public Works Department (note that the posts must be installed with a minimum clearance of 24" from the curb with the locking rings perpendicular to the curb). The bicycle hitching posts have been pre-purchased by the City of Santa Barbara and shall be provided by the City. The contractor shall contact the Public Works Department to coordinate the delivery of the posts.

The trash and recycling containers have been pre-purchased by the City of Santa Barbara and shall be provided by the City. Contractor shall contact the Public Works Department to coordinate the delivery of the containers.

Newspaper Vending Cabinets are to be custom built according to drawings provided by the City of Santa Barbara. Finish to be "fusion bonded epoxy powder coating," color to be Frazee AC09N1 "Earthbound Green" semi-gloss or equal.

Benches shall be from the listed manufacture:

Victor Stanley Inc.
Brick House Road
Dunkirk, Maryland 20754
(800) 368-2573

All benches shall be furnished and installed by the contractor.



Wood and Metal Benches



Newspaper Display Cabinet



Recycle and Refuse Container



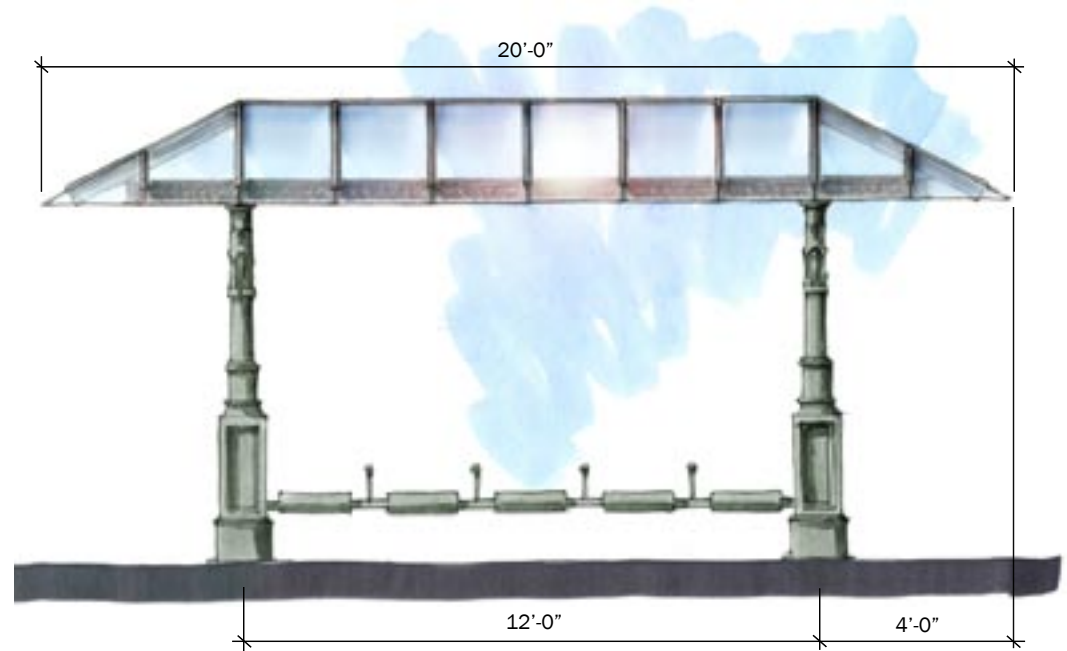
Chapala Street Light Standard

Bus Shelter (Concept)

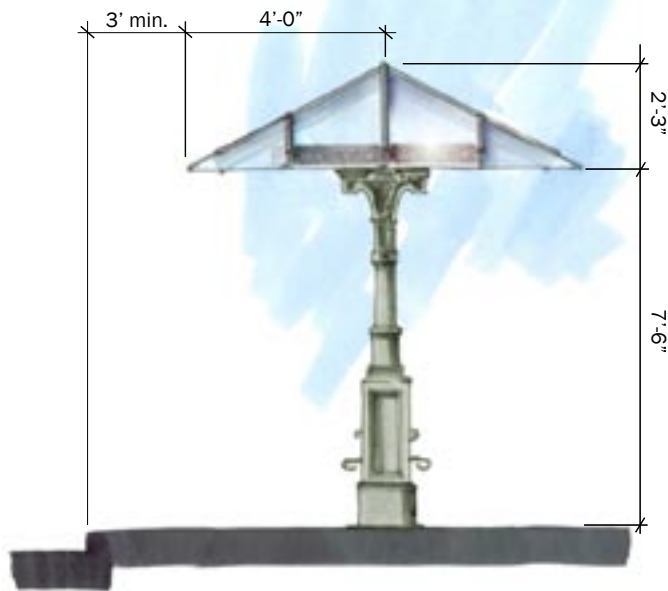
A concept based on the existing street light standards was developed to provide shade and shelter at existing bus stop locations on Chapala Street.

Please consult with the City of Santa Barbara Public Works Department and the Metropolitan Transport District for future bus stop locations.

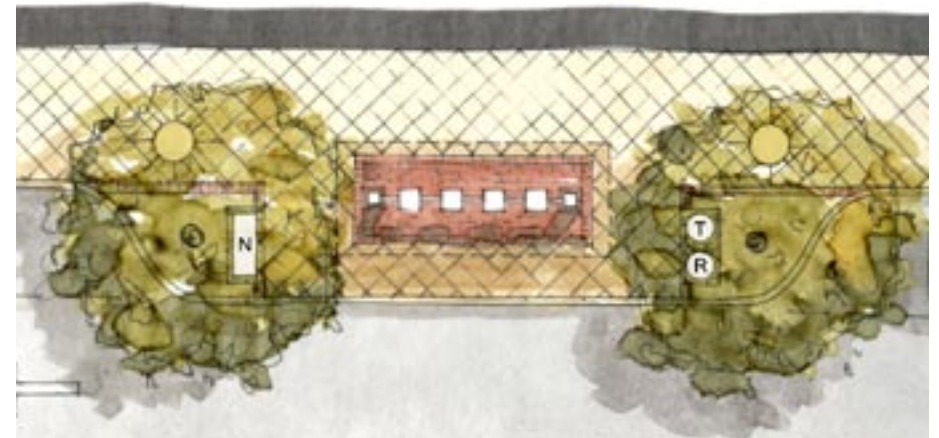
All conceptual designs must be reviewed and approved by the City of Santa Barbara Historic Landmarks Commission and the City of Santa Barbara Public Works Department prior to installation.



Concept Bus Shelter Front Elevation



Concept Bus Shelter Side Elevation



Concept Bus Shelter Roof Plan

Traffic Signals

Chapala Street traffic signals, pedestrian call buttons and street lights are to be consolidated on to a single support pole located at each of the four corners to reduce clutter. The traffic signals will use the same base and light standard as specified for the Chapala Street light. Please refer to the Santa Barbara Public Works and Transportation Departments for specifications.



Typical Chapala Street Traffic Signal Elevation



Typical Chapala Street Traffic Signal Plan



Typical Chapala Street Traffic Signal Elevation