

APPENDIX C. COUNT DATA - INTERSECTIONS

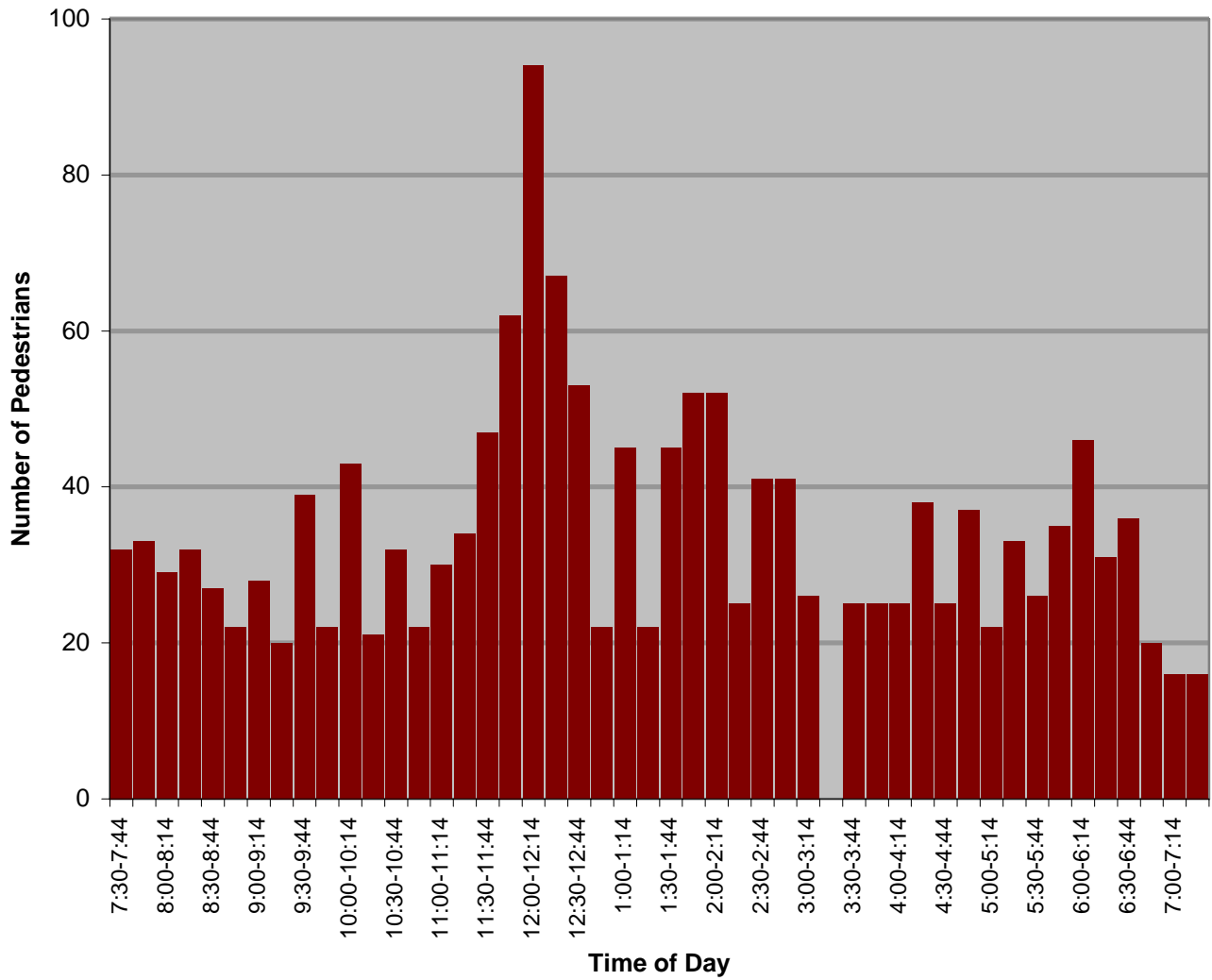
The following tables and charts provide detailed pedestrian count data from each of the surveyed intersections.

Santa Barbara Pedestrian Count Intersection of Milpas Street & Gutierrez Street

date of count: 29 July 2003

time	TOTAL PEDS	Milpas N-bound	Milpas S-bound	Gutierrez E-bound	Gutierrez W-bound	Age 0-18	Age 19-64	Age 65+	Wheel-chair	Skate-board	Inline skate	Baby stroller	Scooter
7:30-7:44	32	12	11	4	5	11	19	1					
7:45-7:59	33	7	10	4	12	7	25	0				1	
8:00-8:14	29	11	5	9	4	6	21	2					
8:15-8:29	32	18	5	4	5	8	24					1	
8:30-8:44	27	8	8	2	9	4	18	4	1				
8:45-8:59	22	8	7	3	4	3	18	1	1				
9:00-9:14	28	14	9	3	2	6	20	2					
9:15-9:29	20	13	2	3	2	7	12	1					
9:30-9:44	39	8	22	7	2	7	29	2				2	
9:45-9:59	22	9	5	7	1	2	19	1					
10:00-10:14	43	14	19	5	5	16	23	4		1		1	
10:15-10:29	21	11	7	2	1	6	13	2				1	
10:30-10:44	32	14	14	3	1	11	19	2		1		1	
10:45-10:59	22	18	1	3	0	8	13	1	1			1	
11:00-11:14	30	8	12	6	4	9	16	5				1	
11:15-11:29	34	17	6	6	5	6	25	3	2	2		2	
11:30-11:44	47	11	30	4	2	11	31	5				5	
11:45-11:59	62	25	28	6	3	10	50	1	1			3	
12:00-12:14	94	25	39	25	5	34	56	1				3	
12:15-12:29	67	18	33	8	8	33	34	0				2	
12:30-12:44	53	23	18	7	5	15	38	0				2	
12:45-12:59	22	9	9	0	4	1	18	3				1	
1:00-1:14	45	15	18	3	9	4	34	4		1		1	
1:15-1:29	22	4	11	3	4	4	17	1					
1:30-1:44	45	16	13	9	7	15	29	1		1		3	
1:45-1:59	52	20	18	9	5	21	31					1	
2:00-2:14	52	14	16	10	12	22	30	0				3	
2:15-2:29	25	6	12	6	1	6	18	0				2	
2:30-2:44	41	19	11	6	5	15	24	0	1			3	
2:45-2:59	41	18	11	4	8	11	28	2				2	
3:00-3:14	26	12	4	5	5	11	10	5	2				
3:15-3:29													
3:30-3:44	25	11	5	3	6	10	14	1					
3:45-3:59	25	14	8	3	0	5	19	1					
4:00-4:14	25	6	12	6	1	15	10	0					
4:15-4:29	38	10	15	5	8	16	21	1				1	
4:30-4:44	25	14	6	1	4	9	13	3				3	
4:45-4:59	37	13	11	6	7	6	31	0					
5:00-5:14	22	7	12	1	2	5	16	1		1			
5:15-5:29	33	13	12	5	3	3	30	0					
5:30-5:44	26	14	8	1	3	4	21	1				1	
5:45-5:59	35	15	9	4	7	6	29	0				1	
6:00-6:14	46	21	8	14	3	15	28	3				2	
6:15-6:29	31	12	11	2	6	6	24	1					
6:30-6:44	36	15	15	2	4	6	30	0				1	
6:45-6:59	20	5	11	0	4	0	20	0					
7:00-7:14	16	6	7	3	0	4	12	0					
7:15-7:29	16	5	7	0	4	2	14	0					
TOTALS	1616	606	571	232	207	442	1094	66	9	7	0	51	4

Milpas/Gutierrez

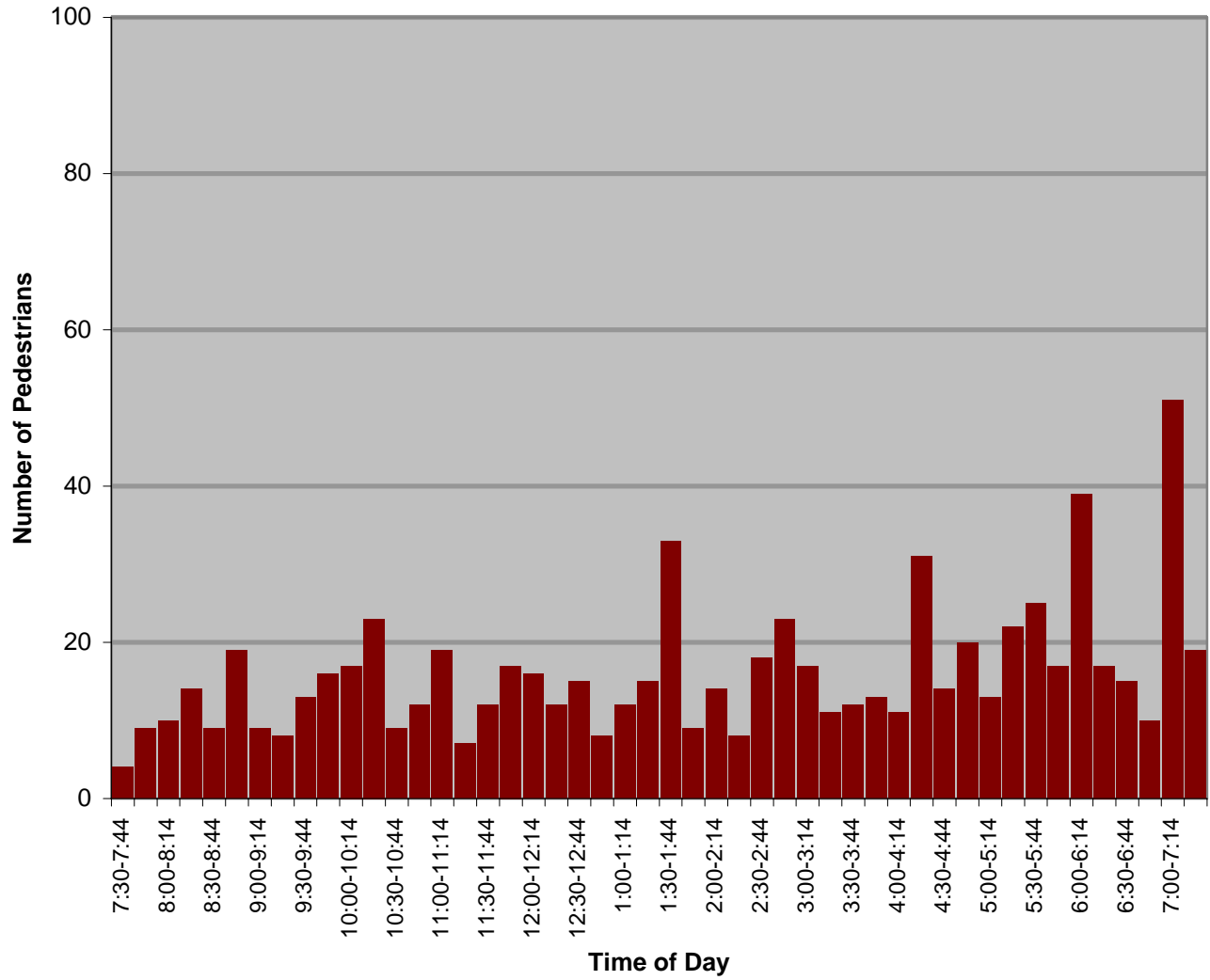


Santa Barbara Pedestrian Count Intersection of Garden Street & Micheltorena Street

date of count: 30 July 2003

time	TOTAL PEDS	Garden N-bound	Garden S-bound	Micheltorena E-bound	Micheltorena W-bound	Age 0-18	Age 19-64	Age 65+	Wheel-chair	Skate-board	Inline skate	Baby stroller	Scooter
7:30-7:44	4	0	2	1	1	1	2	1					
7:45-7:59	9	3	1	0	5	0	9	0					
8:00-8:14	10	3	2	2	3	0	8	2					
8:15-8:29	14	5	1	1	7	4	7	3					
8:30-8:44	9	1	1	2	5	1	7	1					
8:45-8:59	19	3	4	5	7	2	14	3					
9:00-9:14	9	2	1	2	4	0	5	4					
9:15-9:29	8	3	2	1	2	1	7	0			1		
9:30-9:44	13	4	1	1	7	1	9	3				1	
9:45-9:59	16	9	7	0	0	5	7	4					
10:00-10:14	17	2	2	4	9	7	7	3					
10:15-10:29	23	5	5	5	8	4	16	3	2	2			
10:30-10:44	9	1	5	1	2	4	3	2					
10:45-10:59	12	2	1	5	4	2	9	1					
11:00-11:14	19	1	12	1	5	8	7	4		4		1	
11:15-11:29	7	0	1	1	5	1	3	3				1	
11:30-11:44	12	2	3	4	3	3	8	1					
11:45-11:59	17	5	5	6	1	7	8	2				2	
12:00-12:14	16	5	2	6	3	4	11	1				2	
12:15-12:29	12	4	5	3	0	9	3	0					
12:30-12:44	15	8	1	5	1	6	7	2					
12:45-12:59	8	2	4	2	0	1	7	0					1
1:00-1:14	12	2	7	3	0	5	4	3					
1:15-1:29	15	6	4	0	5	5	8	1				2	
1:30-1:44	33	4	9	17	3	19	14	0				2	
1:45-1:59	9	6	2	1	0	5	4	0				1	
2:00-2:14	14	3	5	4	2	2	9	3		1		1	
2:15-2:29	8	0	0	6	2	2	6	0					
2:30-2:44	18	9	1	4	4	8	8	2		1		2	
2:45-2:59	23	14	4	3	2	10	9	4				1	
3:00-3:14	17	3	5	8	1	4	9	4				2	
3:15-3:29	11	5	2	2	2	2	7	2					
3:30-3:44	12	4	3	2	3	7	5	0				1	
3:45-3:59	13	2	3	6	2	5	5	2		1			
4:00-4:14	11	6	3	1	1	4	6	1				2	
4:15-4:29	31	1	3	21	6	10	16	5				2	
4:30-4:44	14	7	0	6	1	2	10	2					
4:45-4:59	20	5	3	5	7	5	15	0		1		1	
5:00-5:14	13	4	6	1	2	3	8	2					
5:15-5:29	22	2	7	5	8	6	14	2				1	
5:30-5:44	25	8	1	6	10	6	17	2		2			
5:45-5:59	17	4	5	2	6	7	10	0					
6:00-6:14	39	9	16	10	4	16	20	3				1	
6:15-6:29	17	3	4	6	4	4	12	1					
6:30-6:44	15	3	2	8	2	1	11	3		1			
6:45-6:59	10	1	2	3	4	2	5	3					
7:00-7:14	51	27	8	10	6	20	30	1		1			
7:15-7:29	19	6	1	9	3	8	12	0					
TOTALS	767	214	174	207	172	239	438	89	2	14	1	26	1

Garden/Micheltorena

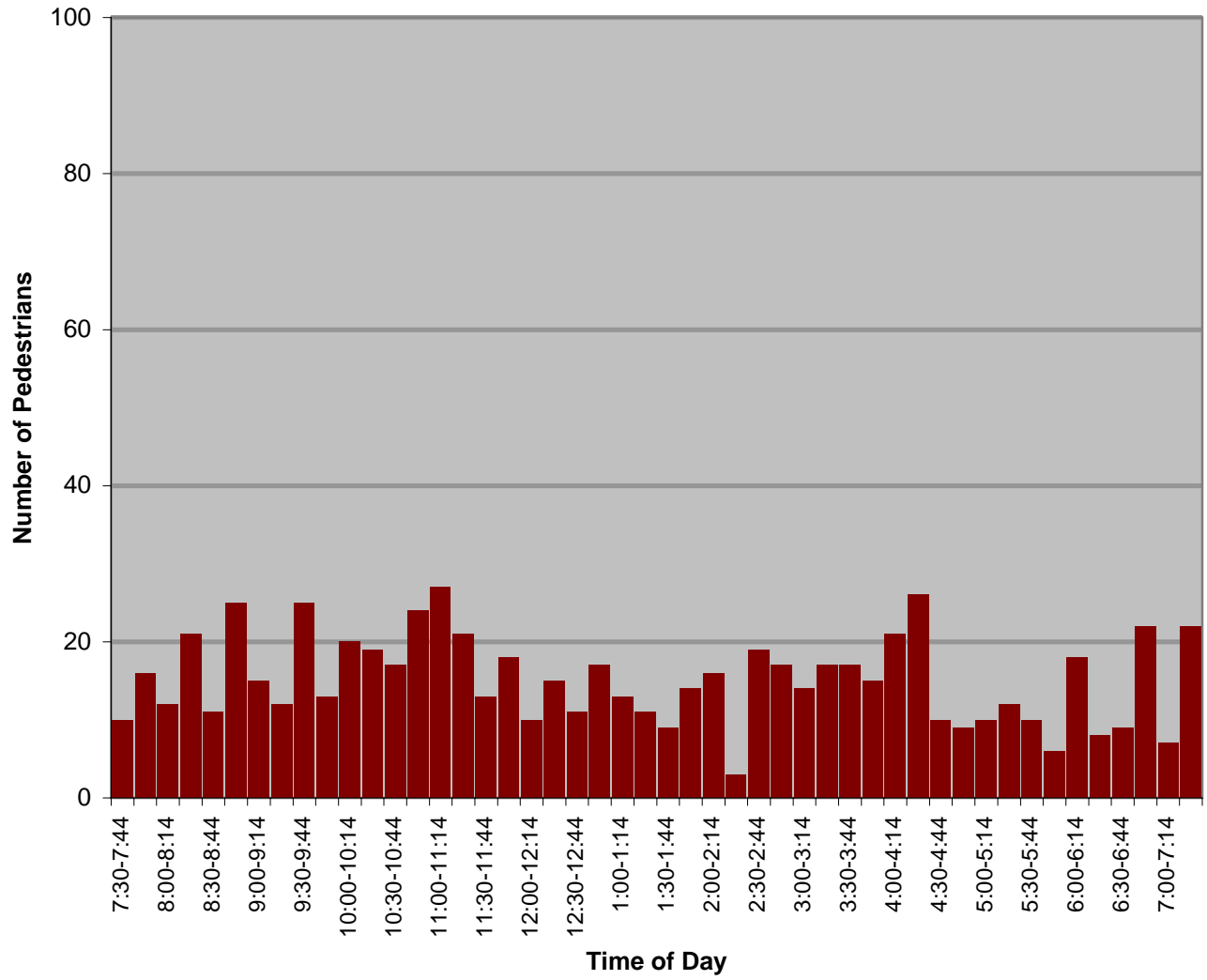


Santa Barbara Pedestrian Count Intersection of State Street & Ontare Road

date of count: 4 August 2003

time	TOTAL PEDS	Ontare N-bound	Ontare S-bound	State E-bound	State W-bound	Age 0-18	Age 19-64	Age 65+	Wheel-chair	Skate-board	Inline skate	Baby stroller	Scooter
7:30-7:44	10	2	1	4	3	1	7	2				1	
7:45-7:59	16	1	4	6	5	3	8	5					
8:00-8:14	12	3	1	2	6	1	9	2					
8:15-8:29	21	4	0	5	12	4	10	7				1	
8:30-8:44	11	0	1	4	6	0	9	2					
8:45-8:59	25	0	3	12	10	4	18	4				1	
9:00-9:14	15	3	5	2	5	2	12	1				1	
9:15-9:29	12	2	0	7	3	0	5	7					
9:30-9:44	25	7	0	9	9	5	18	2				1	
9:45-9:59	13	1	1	7	4	0	9	4					
10:00-10:14	20	0	2	6	12	6	14	0				1	2
10:15-10:29	19	2	1	9	7	4	13	2					
10:30-10:44	17	1	2	8	6	5	10	2	1			1	2
10:45-10:59	24	2	3	13	6	8	11	5					
11:00-11:14	27	0	2	12	13	6	19	2	1				
11:15-11:29	21	1	9	6	5	9	12	1				1	
11:30-11:44	13	0	0	3	10	1	9	3					
11:45-11:59	18	2	2	9	5	3	13	2					
12:00-12:14	10	2	0	7	1	1	6	3					
12:15-12:29	15	0	4	5	6	3	11	1					
12:30-12:44	11	1	0	6	4	2	6	3					
12:45-12:59	17	0	1	3	13	9	7	1					
1:00-1:14	13	0	2	6	5	2	10	1	1				
1:15-1:29	11	0	1	3	7	4	7	0					
1:30-1:44	9	0	0	7	2	0	9	0					
1:45-1:59	14	1	0	8	5	2	12	1	1	2			
2:00-2:14	16	1	2	6	7	3	11	2					
2:15-2:29	3	0	1	2	0	0	2	1	1				
2:30-2:44	19	2	1	9	7	6	12	2					1
2:45-2:59	17	0	3	11	3	7	8	2					
3:00-3:14	14	0	5	3	6	0	14	0					
3:15-3:29	17	3	2	5	7	1	14	2					
3:30-3:44	17	5	1	9	2	9	7	1					
3:45-3:59	15	3	2	5	5	6	7	2					
4:00-4:14	21	0	10	7	4	5	12	3					
4:15-4:29	26	4	3	9	10	8	17	1					
4:30-4:44	10	1	0	8	1	3	7	0	1				
4:45-4:59	9	1	1	6	1	1	7	1					
5:00-5:14	10	2	1	6	1	2	6	2					
5:15-5:29	12	0	0	6	6	6	5	1					1
5:30-5:44	10	1	0	4	5	3	7	0					
5:45-5:59	6	0	1	0	5	1	5	0					
6:00-6:14	18	2	2	5	9	3	12	3					
6:15-6:29	8	1	1	1	5	3	4	2					
6:30-6:44	9	2	0	2	5	3	3	3					
6:45-6:59	22	0	0	10	12	7	10	5					
7:00-7:14	7	0	0	1	6	2	5	0					1
7:15-7:29	22	0	0	13	9	7	16	0					1
TOTALS	727	63	81	297	286	171	465	96	6	2	0	8	8

State/Ontare



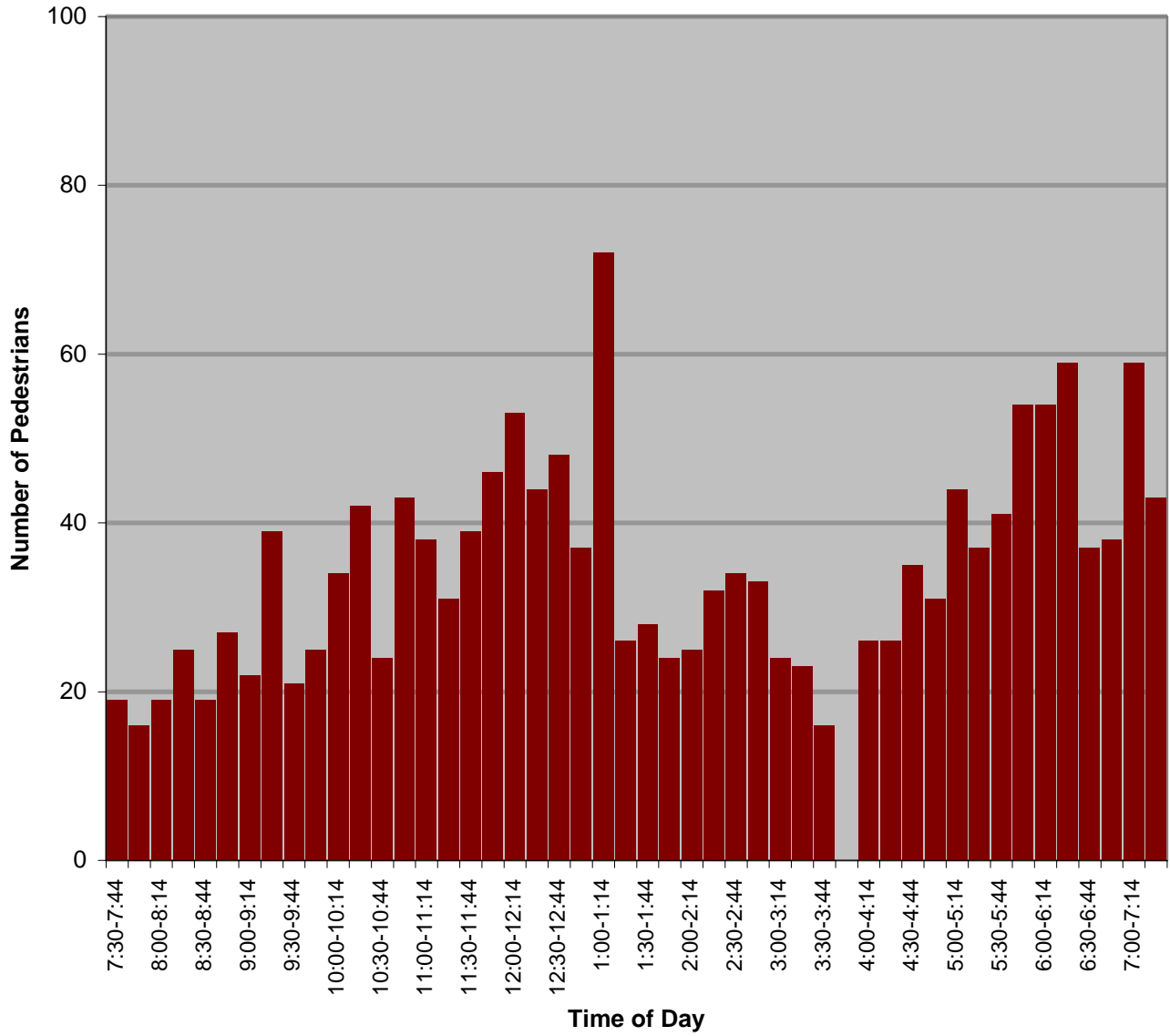
Santa Barbara Pedestrian Count

Intersection of Milpas Street & Cota Street

date of count: 14 August 2003

time	TOTAL PEDS	Milpas N-bound	Milpas S-bound	Cota E-bound	Cota W-bound	Age 0-18	Age 19-64	Age 65+	Wheel-chair	Skate-board	Inline skate	Baby stroller	Scooter
7:30-7:44	19	3	7	4	5	4	15	0				1	
7:45-7:59	16	7	2	3	4	6	10	0				1	
8:00-8:14	19	7	6	2	4	5	14	0					
8:15-8:29	25	6	10	4	5	10	15	0				1	
8:30-8:44	19	10	2	0	7	9	10	0				1	
8:45-8:59	27	3	11	6	7	6	21	0	1			2	
9:00-9:14	22	6	8	5	3	3	19	0					
9:15-9:29	39	11	18	2	8	24	0	0				2	
9:30-9:44	21	7	12	0	2	3	18	0					
9:45-9:59	25	23	1	0	1	11	13	1				3	
10:00-10:14	34	8	19	5	2	13	20	1				2	
10:15-10:29	42	22	8	2	10	8	30	4	1			1	
10:30-10:44	24	11	9	3	1	11	12	1					
10:45-10:59	43	21	16	0	6	14	25	4				1	
11:00-11:14	38	18	11	4	5	16	18	3				4	2
11:15-11:29	31	14	10	2	5	10	18	1	1	1		3	1
11:30-11:44	39	17	15	3	4	16	22	1					
11:45-11:59	46	23	16	7	0	15	22	1				1	
12:00-12:14	53	16	25	2	10	16	37	0				1	
12:15-12:29	44	12	14	7	11	14	23	5				1	
12:30-12:44	48	7	29	6	6	14	31	3	1	1		2	
12:45-12:59	37	9	20	3	5	11	24	1				1	
1:00-1:14	72	27	39	3	3	29	43	0		1		2	
1:15-1:29	26	13	7	3	3	5	19	2	1				
1:30-1:44	28	3	18	5	2	3	23	2					
1:45-1:59	24	6	12	2	4	6	18	0				1	
2:00-2:14	25	5	14	2	4	7	17	1		1		2	
2:15-2:29	32	17	10	4	1	8	22	2		1			
2:30-2:44	34	16	12	1	5	16	16	2	11			2	
2:45-2:59	33	13	16	1	3	14	18	1		5		1	
3:00-3:14	24	9	11	3	1	5	18	1					
3:15-3:29	23	3	12	3	5	4	19	0				1	
3:30-3:44	16	7	7	2	0	1	13	1			1		
3:45-3:59													
4:00-4:14	26	12	12	0	2	7	17	2					
4:15-4:29	26	15	8	2	1	6	20	0					
4:30-4:44	35	15	16	0	4	3	31	1		1		1	
4:45-4:59	31	14	5	2	10	25	0	0		3		2	
5:00-5:14	44	15	23	1	5	11	33	0				4	
5:15-5:29	37	16	18	0	3	5	31	0		2		1	
5:30-5:44	41	9	25	0	7	6	33	1					
5:45-5:59	54	25	22	2	5	13	41	0					
6:00-6:14	54	6	42	1	5	19	35	0				3	
6:15-6:29	59	12	25	4	18	25	33	0				4	
6:30-6:44	37	10	19	2	6	4	33	0				1	
6:45-6:59	38	13	15	4	6	10	28	0				1	
7:00-7:14	59	23	20	6	10	12	47	0					
7:15-7:29	43	15	19	1	8	10	32	1				3	1
TOTALS	1632	580	696	124	232	493	1057	43	16	16	1	57	4

Milpas/Cota



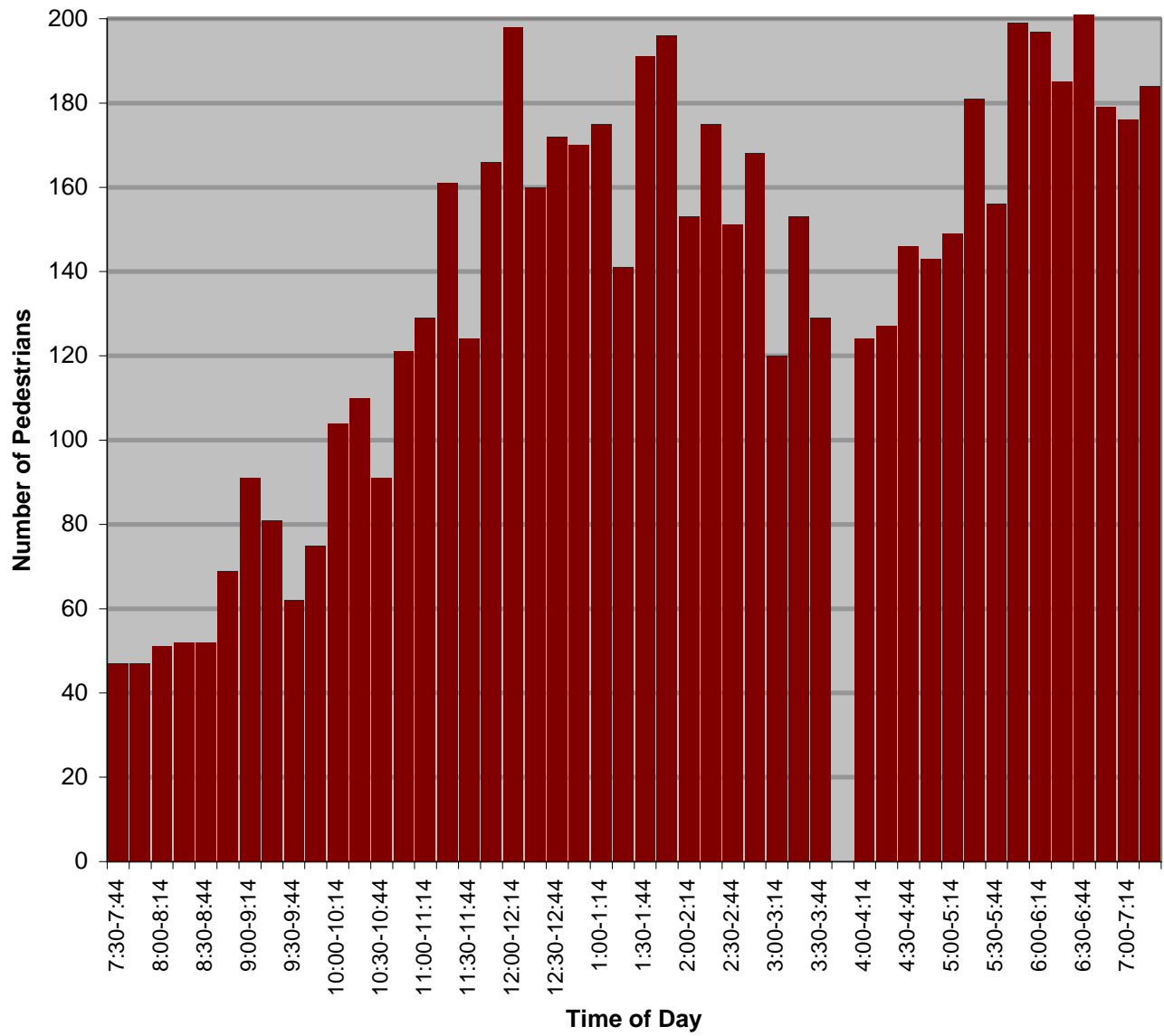
Santa Barbara Pedestrian Count

Intersection of State Street & Gutierrez Street

date of count: 15 August 2003

time	TOTAL PEDS	State N-bound	State S-bound	Gutierrez E-bound	Gutierrez W-bound	Age 0-18	Age 19-64	Age 65+	Wheel-chair	Skate-board	Inline skate	Baby stroller	Scooter
7:30-7:44	47	19	20	7	1	2	40	4					
7:45-7:59	47	14	12	17	4	5	34	5		1			
8:00-8:14	51	7	27	11	6	6	43	2					
8:15-8:29	52	21	23	6	2	4	46	2					
8:30-8:44	52	19	19	11	3	5	44	3					
8:45-8:59	69	38	21	4	6	5	60	4	1			1	
9:00-9:14	91	33	30	12	16	9	70	12		2			1
9:15-9:29	81	48	20	10	3	6	62	11	2				
9:30-9:44	62	29	24	5	4	3	52	7	1			1	
9:45-9:59	75	30	27	9	9	14	55	6	1	7		1	1
10:00-10:14	104	45	26	15	18	8	83	13	1				
10:15-10:29	110	19	59	23	9	15	88	7		1		2	1
10:30-10:44	91	43	31	10	7	9	74	9		2		1	1
10:45-10:59	121	46	39	26	10	14	93	14		3		1	
11:00-11:14	129	50	40	15	24	20	99	9				3	
11:15-11:29	161	87	55	15	4	23	130	8	1	3		5	
11:30-11:44	124	38	52	14	20	10	103	6	1	4			
11:45-11:59	166	71	65	19	11	25	137	3				2	
12:00-12:14	198	84	93	15	6	33	155	5				5	
12:15-12:29	160	57	76	20	7	23	125	15	1	3		3	
12:30-12:44	172	85	65	10	12	21	135	14		3		2	
12:45-12:59	170	58	89	14	9	32	127	11				6	
1:00-1:14	175	77	72	13	13	34	131	6		2		2	
1:15-1:29	141	55	34	24	28	33	125	13	1	1			
1:30-1:44	191	54	107	13	17	63	127	2		1	1	4	
1:45-1:59	196	60	93	30	13	46	143	8		3		6	
2:00-2:14	153	36	89	9	19	25	114	12	1	1		1	1
2:15-2:29	175	79	68	15	13	38	131	5		2		4	
2:30-2:44	151	53	70	15	13	48	96	7		1		7	
2:45-2:50	168	52	91	10	15	44	114	8				3	
3:00-3:14	120	46	55	11	8	25	92	4		3			
3:15-3:29	153	65	67	9	12	39	97	18	1	2			
3:30-3:44	129	37	63	13	16	22	95	6					1
3:45-3:59													
4:00-4:14	124	43	71	3	7	26	84	9				1	
4:15-4:29	127	43	60	3	21	34	92	2		1		2	
4:30-4:44	146	47	81	15	3	35	106	5		4			
4:45-4:59	143	33	103	4	3	47	87	6		4			
5:00-5:14	149	64	65	10	10	41	109	3				4	
5:15-5:29	181	82	76	12	11	67	110	5			1	2	
5:30-5:44	156	71	69	12	4	31	108	8					
5:45-5:59	199	69	99	19	12	59	137	9				3	
6:00-6:14	197	59	103	30	5	55	146	3	1			1	
6:15-6:29	185	49	103	20	13	49	133	3		3			
6:30-6:44	201	56	119	18	8	54	137	5					
6:45-6:59	179	58	81	23	17	32	137	9				1	
7:00-7:14	176	82	67	18	9	35	137	4		4			
7:15-7:29	184	90	68	12	14	24	154	4				2	
TOTALS	6432	2401	2887	649	495	1298	4797	334	13	61	2	76	6

State/Gutierrez



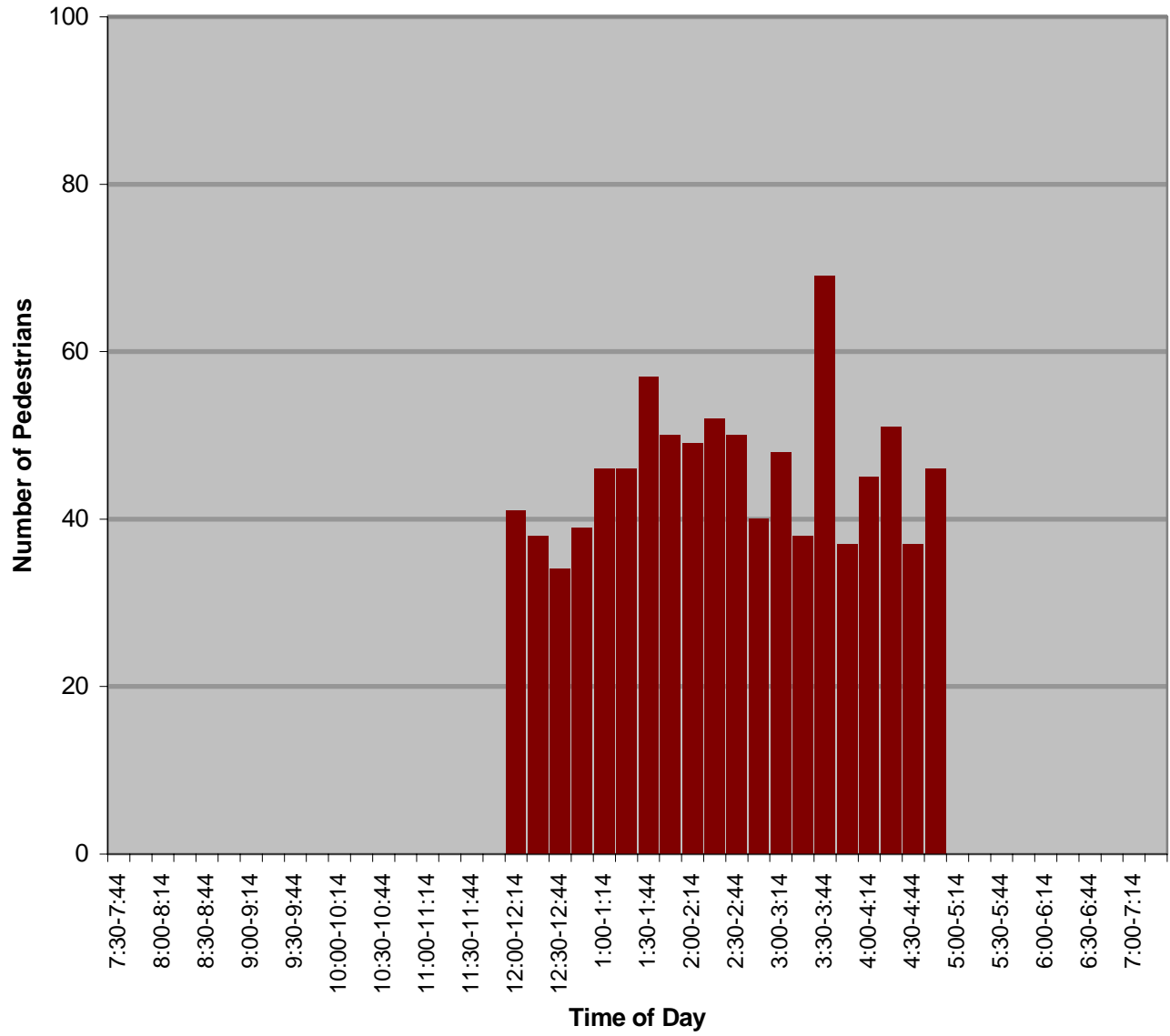
Santa Barbara Pedestrian Count

Intersection of Chapala Street & Anapamu Street

date of count: 16 August 2003

time	TOTAL PEDS	State N-bound	State S-bound	Gutierrez E-bound	Gutierrez W-bound	Age 0-18	Age 19-64	Age 65+	Wheel-chair	Skate-board	Inline skate	Baby stroller	Scooter
7:30-7:44													
7:45-7:59													
8:00-8:14													
8:15-8:29													
8:30-8:44													
8:45-8:59													
9:00-9:14													
9:15-9:29													
9:30-9:44													
9:45-9:59													
10:00-10:14													
10:15-10:29													
10:30-10:44													
10:45-10:59													
11:00-11:14													
11:15-11:29													
11:30-11:44													
11:45-11:59													
12:00-12:14	41	10	8	12	11	6	17	13			1		
12:15-12:29	38	14	12	6	6	11	23	3				1	
12:30-12:44	34	9	4	9	12	4	26	4					
12:45-12:59	39	6	19	8	6	11	28	0		1	1		
1:00-1:14	46	11	10	17	8	7	32	6	1				
1:15-1:29	46	13	9	12	12	9	33	4				1	
1:30-1:44	57	26	8	12	11	11	41	4		1			
1:45-1:59	50	11	11	23	5	9	33	8				1	
2:00-2:14	49	16	5	15	13	14	29	6		1			
2:15-2:29	52	7	6	18	21	14	40	3					
2:30-2:44	50	7	7	15	21	5	40	5					
2:45-2:50	40	13	9	7	11	5	29	6	1	2			
3:00-3:14	48	15	12	10	11	12	32	4				1	
3:15-3:29	38	3	14	8	13	12	29	2				1	
3:30-3:44	69	11	13	19	26	16	49	4	1	1		1	
3:45-3:59	37	7	3	12	15	2	30	4		1			
4:00-4:14	45	7	14	8	16	8	35	2	1	1			
4:15-4:29	51	7	21	3	20	6	42	3					
4:30-4:44	37	7	10	5	15	5	28	3					
4:45-4:59	46	15	6	14	11	12	30	4					
5:00-5:14													
5:15-5:29													
5:30-5:44													
5:45-5:59													
6:00-6:14													
6:15-6:29													
6:30-6:44													
6:45-6:59													
7:00-7:14													
7:15-7:29													
TOTALS	913	215	201	233	264	179	646	88	4	8	2	6	0

Chapala/Anapamu



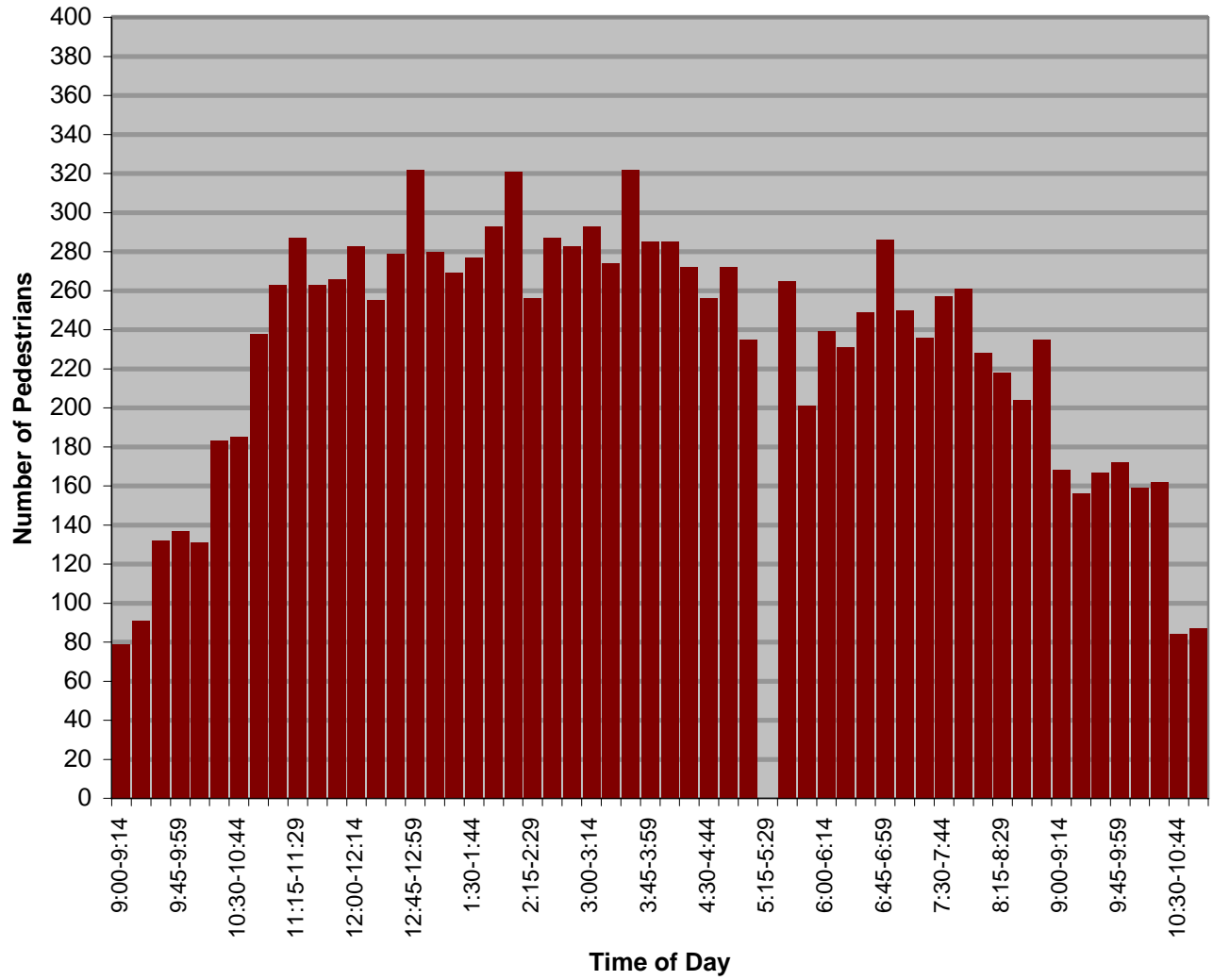
Santa Barbara Pedestrian Count

Intersection of State Street & Anapamu Street

date of count: 16 August 2003 (9:00-11:45) & 23 August 2003 (11:45-9:00)

time	TOTAL PEDS	State N-bound	State S-bound	Gutierrez E-bound	Gutierrez W-bound	Age 0-18	Age 19-64	Age 65+	Wheel-chair	Skate-board	Inline skate	Baby stroller	Scooter
9:00-9:14	79	29	34	7	9	11	50	17	2			1	
9:15-9:29	91	31	33	7	20	9	63	19				1	
9:30-9:44	132	34	47	27	24	24	83	24	1	1		5	
9:45-9:59	137	43	73	11	10	17	93	27	1	1			
10:00-10:14	131	47	52	8	24	15	94	20	1	3			
10:15-10:29	183	68	74	13	28	26	126	32		3			
10:30-10:44	185	83	66	12	24	21	138	26	1			4	
10:45-10:59	238	70	105	19	44	29	169	38				7	
11:00-11:14	263	94	87	25	57	67	183	41				7	
11:15-11:29	287	112	120	23	32	37	215	35	2			3	
11:30-11:44	263	125	82	25	31	35	205	23	3		1	5	
11:45-11:59	266	119	95	17	35	36	187	19				8	
12:00-12:14	283	119	118	14	32	46	219	13	1	1		9	
12:15-12:29	255	110	93	18	34	52	192	10	1			8	1
12:30-12:44	279	137	94	18	30	38	216	20	1	1		8	
12:45-12:59	322	101	151	29	41	45	251	17					
1:00-1:14	280	91	128	15	46	37	228	15				1	
1:15-1:29	269	86	129	17	37	48	202	21	1			2	
1:30-1:44	277	128	89	19	41	52	204	20	2		1	2	2
1:45-1:59	293	106	109	20	58	41	236	13	2			9	
2:00-2:14	321	103	146	19	53	66	230	8				4	
2:15-2:29	256	112	94	11	39	42	102	14		1		2	
2:30-2:44	287	111	134	17	25	24	247	15				4	
2:45-2:59	283	138	99	15	31	45	130	9				4	
3:00-3:14	293	113	137	17	26	47	141	8	2			7	
3:15-3:29	274	98	118	20	38	37	123	13	1			9	
3:30-3:44	322	139	133	26	24	62	155	7			1	7	
3:45-3:59	285	112	123	11	39	38	143	9				1	
4:00-4:14	285	114	129	5	37	28	129	9				2	
4:15-4:29	272	99	128	14	31	39	122	12	2			4	
4:30-4:44	256	91	113	18	34	33	112	10	2			3	
4:45-4:59	272	119	113	9	31	36	125	11	1	2	1	4	
5:00-5:14	235	112	93	5	25	38	93	7	1			3	
5:15-5:29													
5:30-5:44	265	138	85	14	28	39	111	6	3			6	
5:45-5:59	201	89	81	21	10	30	160	6				1	
6:00-6:14	239	103	102	16	18	39	113	6				3	
6:15-6:29	231	107	89	22	13	59	84	5				7	
6:30-6:44	249	128	72	22	27	39	127	8				1	
6:45-6:59	286	112	127	28	19	37	159	8				4	
7:00-7:14	250	108	116	12	14	45	99	15				3	
7:15-7:29	236	116	81	30	9	33	115	12	1			2	
7:30-7:44	257	155	80	13	9	27	125	6				3	
7:45-7:59	261	151	89	6	15	20	160	3				1	
8:00-8:14	228	113	94	19	2	16	126	5				1	
8:15-8:29	218	91	104	9	14	35	109	1				2	
8:30-8:44	204	94	89	6	15	22	93	8				1	
8:45-8:59	235	120	72	19	24	34	111	4					
9:00-9:14	168	75	72	9	12	24	143	1				5	2
9:15-9:29	156	49	93	6	8	9	147	1					
9:30-9:44	167	78	86	1	2	11	155	1				3	1
9:45-9:59	172	73	79	16	4	16	151	0		2			
10:00-10:14	159	81	61	8	9	9	144	5		1		2	
10:15-10:29	162	101	56	2	3	14	140	5					
10:30-10:44	84	35	47	2	0	2	76	6				1	
10:45-10:59	87	47	34	0	6	4	83	0					
TOTALS	12177	4095	4092	696	1228	1542	6174	648	32	13	4	161	3

State/Anapamu



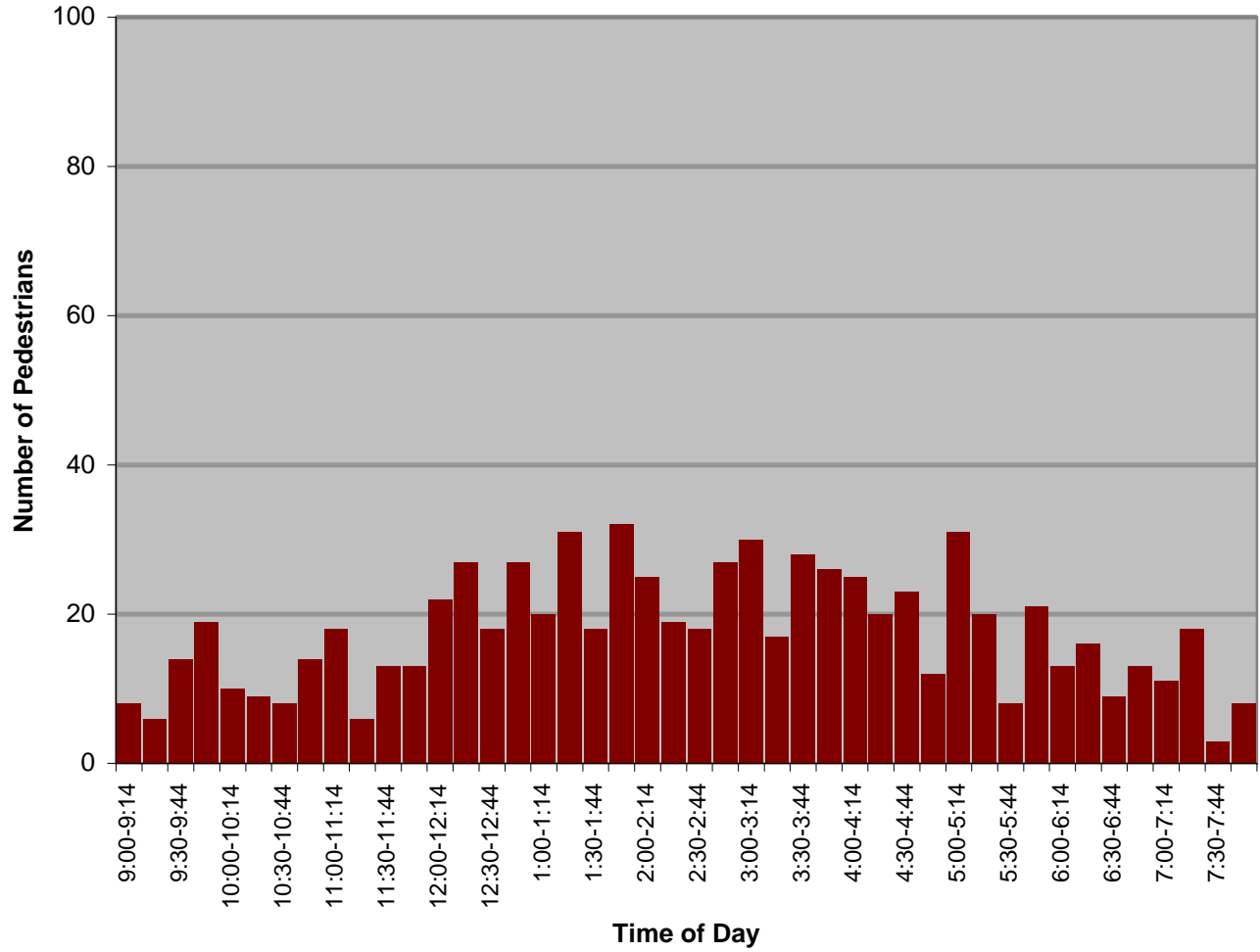
Santa Barbara Pedestrian Count

Intersection of Shoreline Drive & Loma Alta Drive

date of count: 17 August 2003

time	TOTAL PEDS	Loma Alta N-bound	Loma Alta S-bound	Shoreline E-bound	Shoreline W-bound	Age 0-18	Age 19-64	Age 65+	Wheel- chair	Skate- board	Inline skate	Baby stroller	Scooter
9:00-9:14	8	1	5	1	1	0	7	1					
9:15-9:29	6	1	2	0	3	1	5	0					
9:30-9:44	14	3	5	2	4	5	1	0				1	
9:45-9:59	19	10	8	1	0	0	19	0					
10:00-10:14	10	3	7	0	0	0	8	2					
10:15-10:29	9	4	4	0	1	4	5	0					
10:30-10:44	8	3	5	0	0	0	8	0					
10:45-10:59	14	5	7	0	2	0	9	5					
11:00-11:14	18	5	8	1	4	5	13	0					
11:15-11:29	6	3	1	0	2	0	3	3					
11:30-11:44	13	1	10	0	2	4	9	0	1				
11:45-11:59	13	3	4	6	0	5	8	0					
12:00-12:14	22	8	14	0	0	9	8	2					
12:15-12:29	27	7	18	0	2	7	18	2				1	
12:30-12:44	18	2	16	0	0	8	9	1					
12:45-12:59	27	2	20	5	0	17	10	0					
1:00-1:14	20	10	9	1	0	11	8	1					
1:15-1:29	31	9	22	0	0	9	19	3					
1:30-1:44	18	6	8	4	0	4	13	0					
1:45-1:59	32	13	17	2	0	13	18	1					
2:00-2:14	25	8	16	0	1	10	15	0			2	1	
2:15-2:29	19	13	6	0	0	5	10	4			1		
2:30-2:44	18	12	6	0	0	11	7	0					
2:45-2:50	27	12	10	4	1	10	16	1					
3:00-3:14	30	21	9	0	0	12	19	0					
3:15-3:29	17	0	12	3	2	4	11	2					
3:30-3:44	28	16	12	0	0	9	15	4		2	2	1	
3:45-3:59	26	10	16	0	0	3	20	2					
4:00-4:14	25	8	16	0	1	9	16	0					
4:15-4:29	20	13	5	1	1	7	12	1		3			
4:30-4:44	23	8	14	1	0	5	18	0					
4:45-4:59	12	6	4	1	1	3	9	0					
5:00-5:14	31	28	2	1	0	15	14	2					
5:15-5:29	20	18	0	0	2	7	13	0				1	
5:30-5:44	8	6	0	0	2	0	7	1					
5:45-5:59	21	14	5	2	0	4	17	0			2		
6:00-6:14	13	8	5	0	0	2	10	1		2			
6:15-6:29	16	11	2	3	0	5	11	0					
6:30-6:44	9	3	5	1	0	3	6	0			1		
6:45-6:59	13	8	5	0	0	2	10	1			1		
7:00-7:14	11	3	7	0	1	0	11	0					
7:15-7:29	18	15	2	1	0	4	14	0		1	1		
7:30-7:44	3	2	0	0	1	0	3	0					
7:45-7:59	8	5	2	1	0	1	7	0					
TOTALS	774	340	349	41	33	232	479	40	0	9	10	5	0

Shoreline/Loma Alta



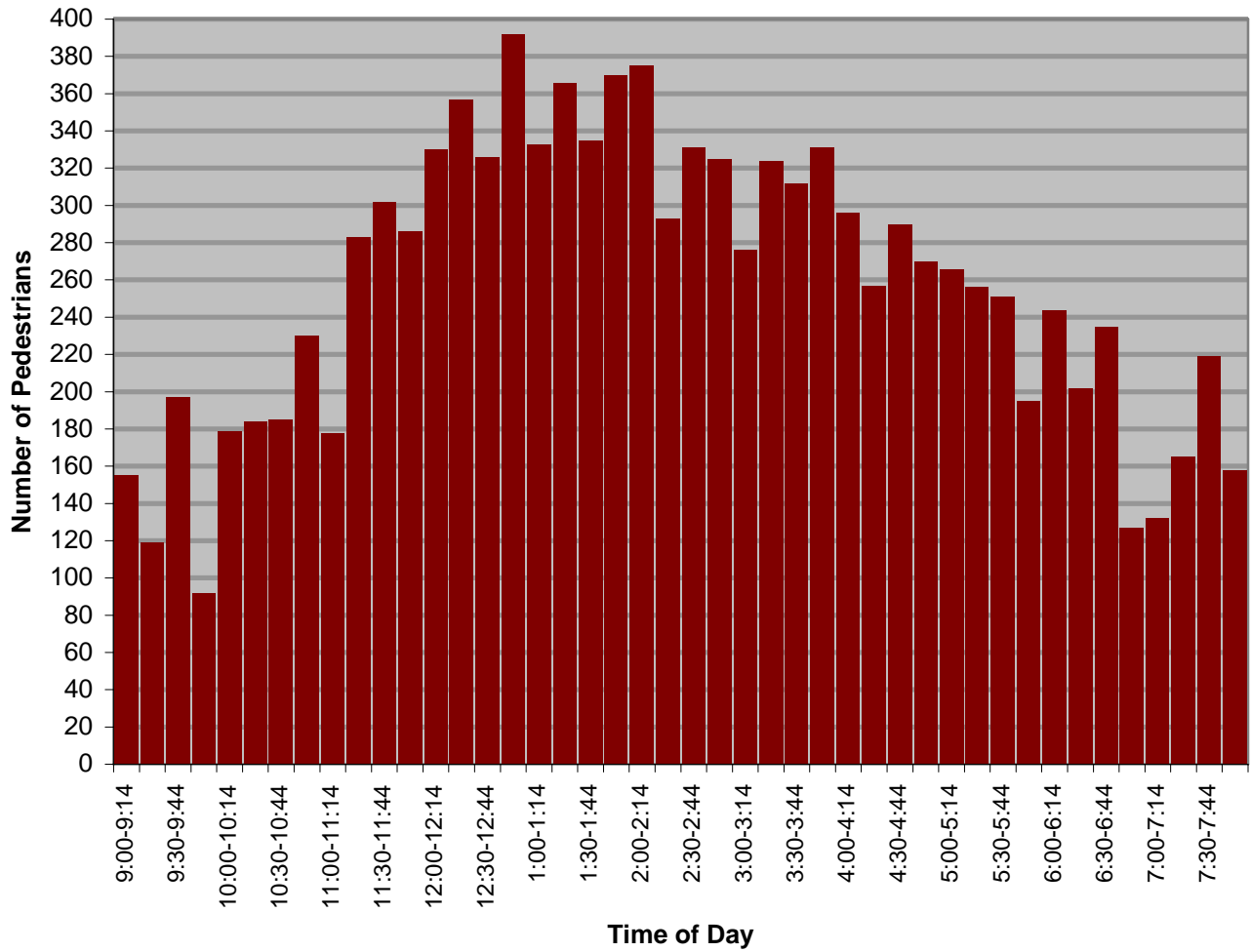
Santa Barbara Pedestrian Count

Intersection of State Street & Cabrillo Boulevard

date of count: 24 August 2003

time	TOTAL PEDS	State N-bound	State S-bound	Cabrillo E-bound	Cabrillo W-bound	Age 0-18	Age 19-64	Age 65+	Wheel-chair	Skate-board	Inline skate	Baby stroller	Scooter
9:00-9:14	155	73	23	19	40							2	2
9:15-9:29	119	34	36	26	23					2	1		1
9:30-9:44	197	32	47	36	82							3	
9:45-9:59	92	8	27	26	31						1	2	
10:00-10:14	179	33	82	43	21								
10:15-10:29	184	36	61	35	52					1	3		
10:30-10:44	185	42	57	57	29					1		2	
10:45-10:59	230	61	82	53	34				3	2	1	2	
11:00-11:14	178	46	56	51	25					1		6	
11:15-11:29	283	84	102	65	32					6		2	
11:30-11:44	302	75	144	49	34				1	1		2	
11:45-11:59	286	77	129	52	28					1	1	6	
12:00-12:14	330	90	134	54	52					4		5	2
12:15-12:29	357	112	154	44	47					2	2	5	
12:30-12:44	326	73	159	64	30						1	13	
12:45-12:59	392	140	129	53	70					5		4	
1:00-1:14	333	99	143	35	56							1	1
1:15-1:29	366	138	168	36	24							4	
1:30-1:44	335	114	158	27	36						1	9	
1:45-1:59	370	106	178	45	41				1	2	3	5	
2:00-2:14	375	139	147	60	29					1	3	7	
2:15-2:29	293	102	108	42	41				2	1	6	3	
2:30-2:44	331	123	106	56	46							5	1
2:45-2:50	325	105	126	45	49				1	2	3	5	
3:00-3:14	276	118	88	39	31				1	3		3	
3:15-3:29	324	147	104	41	32				2		1	3	
3:30-3:44	312	91	136	45	40					3	3	4	
3:45-3:59	331	97	155	44	35							4	
4:00-4:14	296	107	111	45	33				1		1		
4:15-4:29	257	116	102	14	25				1		1	1	
4:30-4:44	290	136	114	32	8						1	4	
4:45-4:59	270	125	95	26	24				1	3			
5:00-5:14	266	95	109	23	39				2	3		8	
5:15-5:29	256	103	129	11	13							8	
5:30-5:44	251	119	71	43	18							1	
5:45-5:59	195	83	78	27	7					1		7	
6:00-6:14	244	106	78	29	31					4		4	
6:15-6:29	202	111	47	29	15					4	1		
6:30-6:44	235	125	68	21	21							7	
6:45-6:59	127	58	38	19	12					2	1	3	
7:00-7:14	132	51	55	13	13					2	2	1	
7:15-7:29	165	60	76	15	14					2		1	
7:30-7:44	219	118	70	8	23				1	2		1	
7:45-7:59	158	78	51	14	15					2	1	2	
TOTALS	11329	3790	4210	1589	1363	0	0	0	16	59	37	152	7

State/Cabrillo



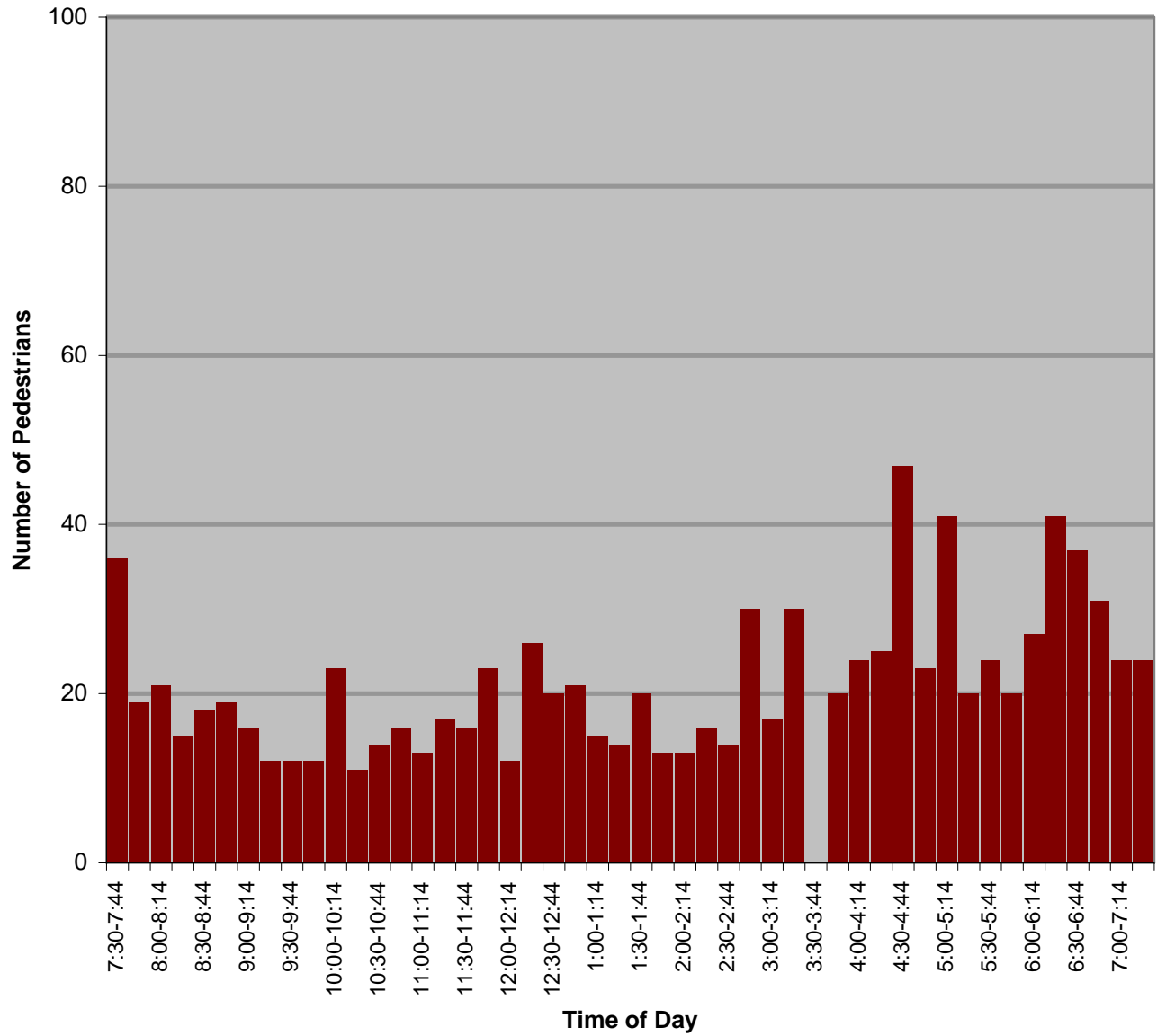
Santa Barbara Pedestrian Count

Intersection of Carpinteria Street & Alisos Street

date of count: 25 August 2003

time	TOTAL PEDS	Alisos N-bound	Alisos S-bound	Carpinteria E-bound	Carpinteria W-bound	Age 0-18	Age 19-64	Age 65+	Wheel-chair	Skate-board	Inline skate	Baby stroller	Scooter
7:30-7:44	36	14	7	4	11	10	26	0					1
7:45-7:59	19	4	6	3	6	3	15	2					
8:00-8:14	21	8	1	2	10	6	14	1					
8:15-8:29	15	4	2	5	4	2	10	3					
8:30-8:44	18	6	3	3	6	3	13	2					
8:45-8:59	19	6	0	8	5	9	10	0		1			
9:00-9:14	16	3	3	9	1	4	12	0					
9:15-9:29	12	4	1	3	4	2	9	1					
9:30-9:44	12	4	0	5	3	3	8	1				1	
9:45-9:59	12	2	3	4	3	5	7	0				2	
10:00-10:14	23	4	2	9	8	9	14	1				1	
10:15-10:29	11	4	2	3	2	5	5	1					
10:30-10:44	14	2	0	8	4	6	6	1		1			
10:45-10:59	16	2	3	7	4	7	7	2		2			
11:00-11:14	13	0	4	6	3	6	6	1				1	
11:15-11:29	17	1	9	5	2	6	12	0				3	
11:30-11:44	16	0	6	3	7	13	3	1		2			
11:45-11:59	23	5	6	2	10	10	13	0				2	
12:00-12:14	12	3	5	3	1	7	5	0				1	
12:15-12:29	26	2	7	11	6	12	14	0		2			
12:30-12:44	20	3	9	6	2	8	12	0				2	
12:45-12:59	21	5	8	5	3	7	13	1					
1:00-1:14	15	3	1	8	3	5	10	0					
1:15-1:29	14	4	6	4	0	5	9	0					
1:30-1:44	20	5	2	9	4	6	14	0					
1:45-1:59	13	1	4	5	3	4	9	0					
2:00-2:14	13	1	2	8	2	1	12	0					
2:15-2:29	16	5	0	8	3	4	12	0				1	
2:30-2:44	14	2	8	2	2	5	9	0					
2:45-2:59	30	2	7	10	11	5	22	3					
3:00-3:14	17	7	1	7	2	9	8	0					
3:15-3:29	30	3	7	13	7	13	17	0			1		
3:30-3:44		0	0	0	0	0	0	0					
3:45-3:59	20	7	5	4	4	2	15	3					
4:00-4:14	24	6	1	13	4	8	15	1		2			
4:15-4:29	25	7	11	6	1	8	15	1					
4:30-4:44	47	2	6	32	7	6	36	0					
4:45-4:59	23	4	6	8	5	3	19	1					
5:00-5:14	41	3	8	18	12	7	31	3			1	1	
5:15-5:29	20	6	3	9	2	8	10	2					
5:30-5:44	24	3	2	15	4	18	17	0				1	
5:45-5:59	20	3	4	11	2	7	13	0					
6:00-6:14	27	8	2	9	8	5	20	2		4			
6:15-6:29	41	9	7	13	12	16	20	5		1	2		
6:30-6:44	37	6	6	8	17	10	25	2	1	1	2	2	
6:45-6:59	31	1	6	21	3	9	21	1			2		
7:00-7:14	24	1	0	8	15	5	20	0					
7:15-7:29	24	1	3	11	9	6	18	0					
TOTALS	1002	186	195	374	247	318	651	42	1	16	8	18	1

Carpinteria/Alisos



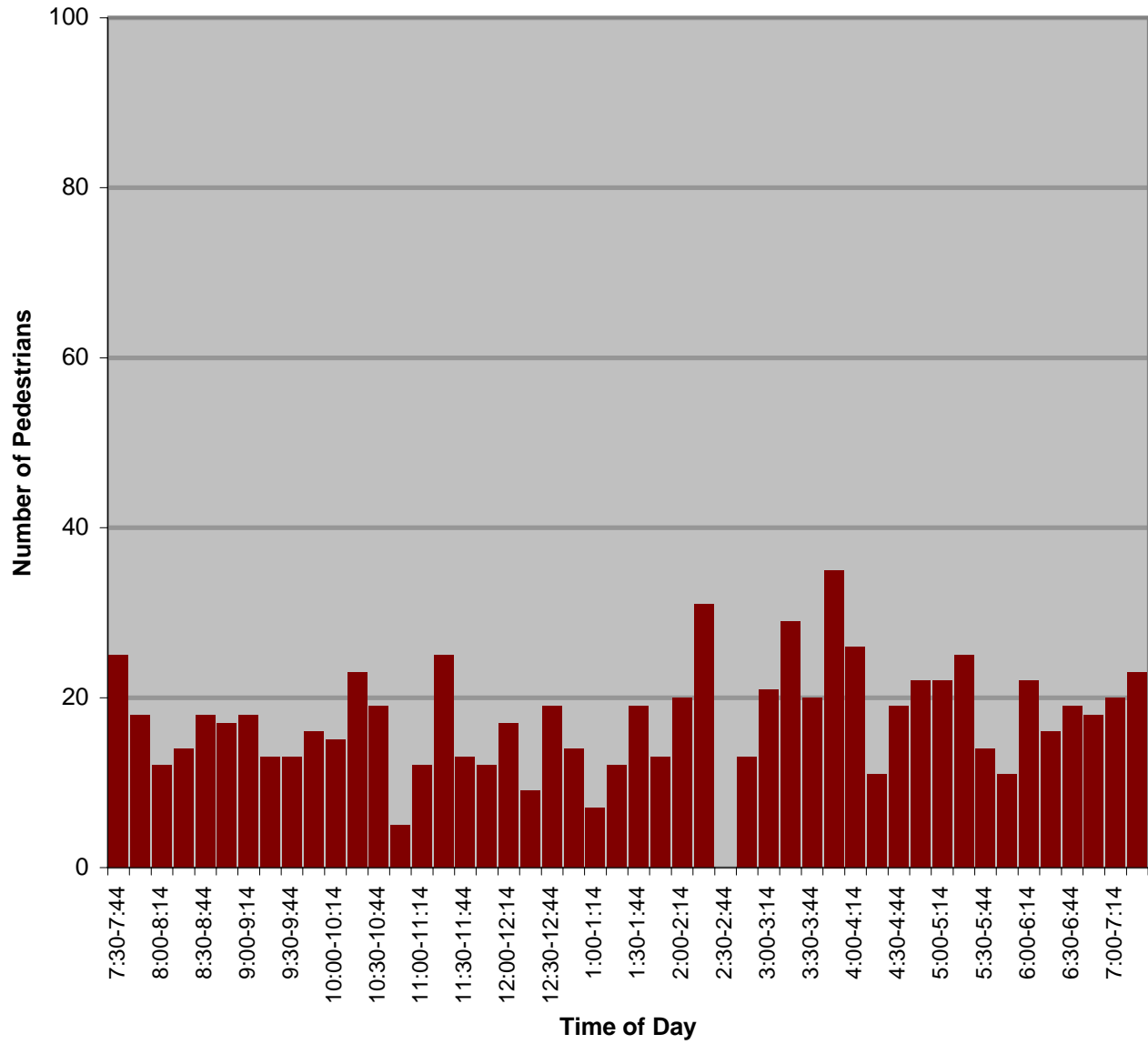
Santa Barbara Pedestrian Count

Intersection of Milpas Street & Carpinteria Street

date of count: 29 August 2003

time	TOTAL PEDS	Milpas N-bound	Milpas S-bound	Carpinteria W-bound	Age 0-18	Age 19-64	Age 65+	Wheel-chair	Skate-board	Inline skate	Baby stroller	Scooter	
7:30-7:44	25	4	7	14	5	17	0						
7:45-7:59	18	1	4	13	1	17	0		2				
8:00-8:14	12	6	1	5	0	10	2						
8:15-8:29	14	5	2	7	2	9	3						
8:30-8:44	18	7	6	5	2	14	2				1		
8:45-8:59	17	7	5	5	1	14	2						
9:00-9:14	18	7	4	7	1	15	2					1	
9:15-9:29	13	3	5	5	0	11	2						
9:30-9:44	13	7	2	4	1	12	0						
9:45-9:59	16	3	8	5	2	14	0				1		
10:00-10:14	15	6	5	4	3	11	1						
10:15-10:29	23	10	4	9	3	20	0		1			1	
10:30-10:44	19	9	5	5	3	15	1		1		1		
10:45-10:59	5	0	4	1	0	5	0						
11:00-11:14	12	2	3	7	3	8	1				1		
11:15-11:29	25	13	7	5	6	17	2				4		
11:30-11:44	13	10	2	1	1	11	1				1		
11:45-11:59	12	3	7	2	4	8	0				1		
12:00-12:14	17	4	4	9	2	12	3						
12:15-12:29	9	6	1	2	1	7	1						
12:30-12:44	19	9	6	4	2	15	1						
12:45-12:59	14	6	4	4	3	10	1						
1:00-1:14	7	3	2	2	3	4	0				1		
1:15-1:29	12	4	6	2	2	8	2						
1:30-1:44	19	12	2	5	6	10	3		1				
1:45-1:59	13	7	3	3	5	8	0				1		
2:00-2:14	20	9	5	6	7	10	2		1			2	
2:15-2:29	31	7	13	11	8	17	4	1	1		1	1	
2:30-2:44													
2:45-2:50	13	5	3	5	3	10	0						
3:00-3:14	21	16	2	3	4	17	0					1	
3:15-3:29	29	10	8	11	1	25	0	1	1				
3:30-3:44	20	14	1	5	8	12	0		1		1		
3:45-3:59	35	11	12	12	11	20	0		1		2	3	
4:00-4:14	26	13	2	11	3	22	1				1		
4:15-4:29	11	6	4	1	3	9	0						
4:30-4:44	19	8	2	9	3	16	0				1		
4:45-4:59	22	15	4	3	1	21	0						
5:00-5:14	22	12	8	2	3	18	1				2		
5:15-5:29	25	17	7	1	1	22	2				1		
5:30-5:44	14	8	2	4	2	11	1						
5:45-5:59	11	5	1	5	2	8	1						
6:00-6:14	22	8	5	9	8	13	1		1				
6:15-6:29	16	10	1	5	3	11	1						
6:30-6:44	19	9	3	7	5	14	0				1		
6:45-6:59	18	4	6	8	2	13	3	1					
7:00-7:14	20	6	4	10	1	15	4						
7:15-7:29	23	5	6	12	4	17	2						
TOTALS	835	352	208	0	275	145	623	53	3	11	0	22	9

Milpas/Carpinteria



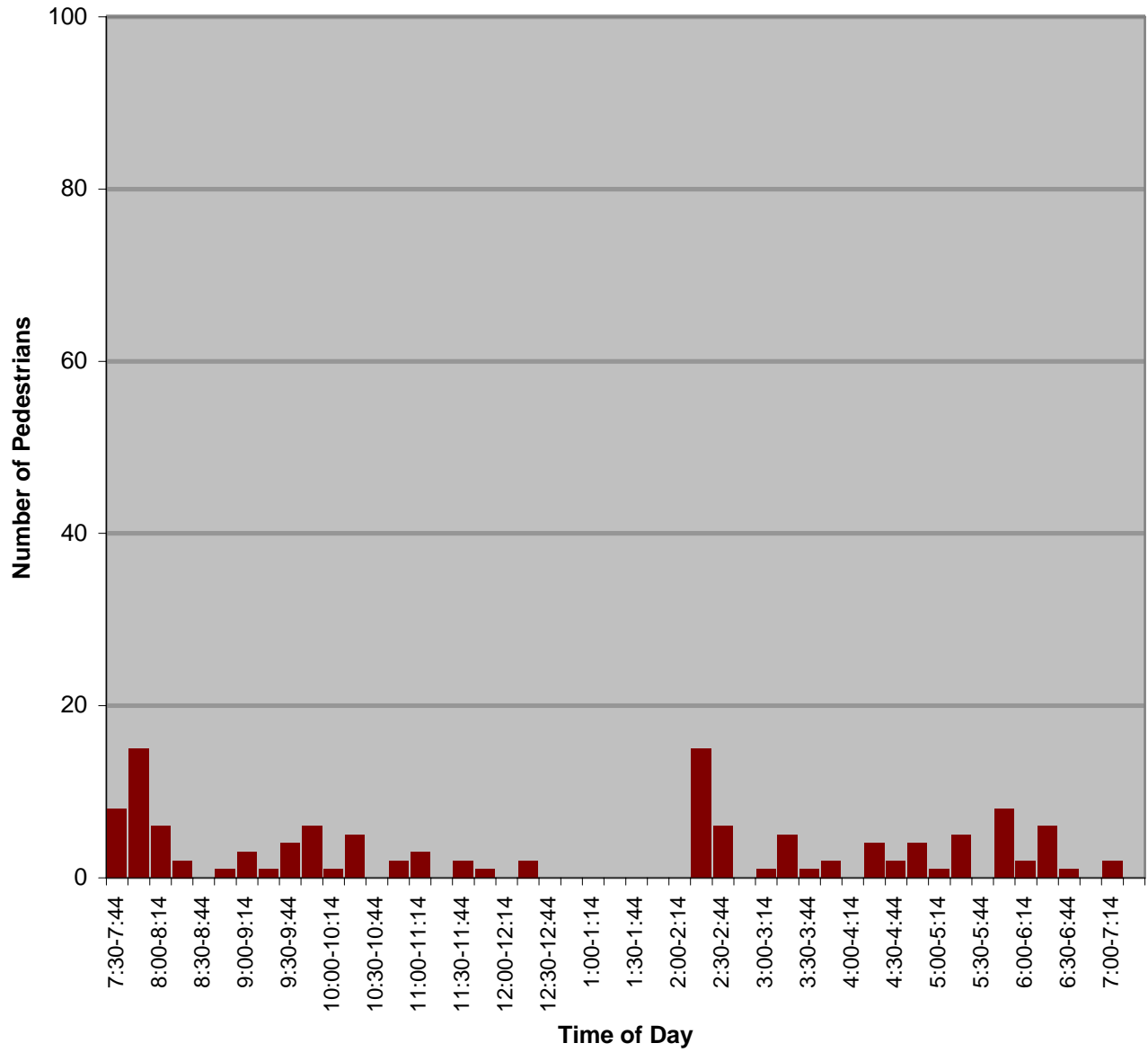
Santa Barbara Pedestrian Count

Intersection of Junipero Street bridge & Highway 101

date of count: 3 September 2003

time	TOTAL PEDS	Junipero E-bound	Junipero W-bound	Age 0-18	Age 19-64	Age 65+	Wheel-chair	Skate-board	Inline skate	Baby stroller	Scooter		
7:30-7:44	8	4	4	3	4	1							
7:45-7:59	15	3	12	14	0	1							
8:00-8:14	6	1	5	2	4	0							
8:15-8:29	2	2	0	0	1	1							
8:30-8:44	0	0	0	0	0	0							
8:45-8:59	1	0	1	0	1	0							
9:00-9:14	3	3	0	0	3	0							
9:15-9:29	1	0	1	0	1	0							
9:30-9:44	4	2	2	1	3	0				1			
9:45-9:59	6	6	0	0	4	2	1						
10:00-10:14	1	0	1	0	1	0							
10:15-10:29	5	2	3	0	3	2							
10:30-10:44	0	0	0	0	0	0							
10:45-10:59	2	0	2	1	1	0				1			
11:00-11:14	3	3	0	0	3	0							
11:15-11:29	0	0	0	0	0	0							
11:30-11:44	2	2	0	1	1	0				1			
11:45-11:59	1	1	0	0	1	0							
12:00-12:14	0	0	0	0	0	0							
12:15-12:29	2	0	2	1	1	0				1			
12:30-12:44	0	0	0	0	0	0							
12:45-12:59	0	0	0	0	0	0							
1:00-1:14	0	0	0	0	0	0							
1:15-1:29	0	0	0	0	0	0							
1:30-1:44	0	0	0	0	0	0							
1:45-1:59	0	0	0	0	0	0							
2:00-2:14	0	0	0	0	0	0							
2:15-2:29	15	12	3	9	6	0							
2:30-2:44	6	4	2	4	2	0							
2:45-2:59	0	0	0	0	0	0							
3:00-3:14	1	1	0	1	0	0							
3:15-3:29	5	5	0	5	0	0							
3:30-3:44	1	1	0	1	0	0							
3:45-3:59	2	0	2	0	2	0							
4:00-4:14	0	0	0	0	0	0							
4:15-4:29	4	3	1	2	2	0				1			
4:30-4:44	2	0	2	1	1	0							
4:45-4:59	4	4	0	2	2	0					1		
5:00-5:14	1	0	1	0	0	1							
5:15-5:29	5	0	5	2	1	0					1		
5:30-5:44	0	0	0	0	0	0							
5:45-5:59	8	7	1	1	5	2				1			
6:00-6:14	2	0	2	0	2	0							
6:15-6:29	6	1	5	3	3	0				2			
6:30-6:44	1	0	1	0	0	1							
6:45-6:59	0	0	0	0	0	0							
7:00-7:14	2	1	1	0	2	0							
7:15-7:29	0	0	0	0	0	0							
TOTALS	127	0	0	68	59	54	60	11	1	0	0	8	2

Junipero/Highway 101



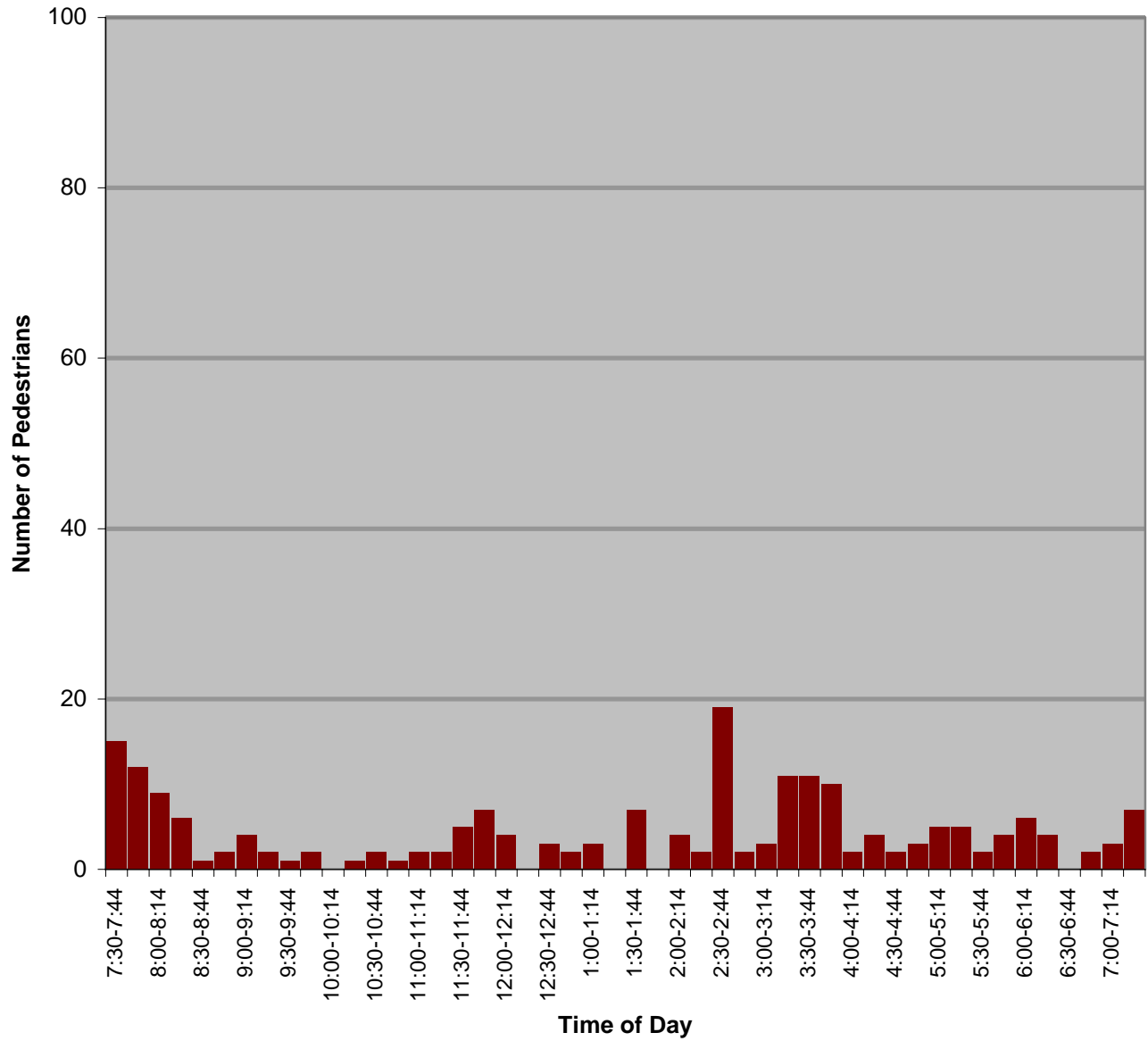
Santa Barbara Pedestrian Count

Intersection of Mision Street & Highway 101

date of count: 4 September 2003

time	TOTAL PEDS	Mission E-bound	Mission W-bound	Age 0-18	Age 19-64	Age 65+	Wheel- chair	Skate- board	Inline skate	Baby stroller	Scooter		
7:30-7:44	15	5	10	5	10	0				2			
7:45-7:59	12	8	4	4	6	2							
8:00-8:14	9	6	3	4	2	3							
8:15-8:29	6	5	1	0	4	2							
8:30-8:44	1	1	0	0	1	0							
8:45-8:59	2	1	1	1	0	1							
9:00-9:14	4	2	2	1	2	1				1			
9:15-9:29	2	2	0	0	2	0							
9:30-9:44	1	1	0	0	1	0							
9:45-9:59	2	1	1	0	1	1							
10:00-10:14	0	0	0	0	0	0							
10:15-10:29	1	1	0	0	1	0							
10:30-10:44	2	0	2	1	1	0				1			
10:45-10:59	1	1	0	0	1	0							
11:00-11:14	2	0	2	1	1	0				1			
11:15-11:29	2	0	2	0	1	1							
11:30-11:44	5	2	3	2	3	0							
11:45-11:59	7	3	4	1	5	1				1			
12:00-12:14	4	3	1	2	2	0				1			
12:15-12:29	0	0	0	0	0	0							
12:30-12:44	3	0	3	1	2	0				1			
12:45-12:59	2	2	0	0	2	0							
1:00-1:14	3	3	0	0	3	0							
1:15-1:29	0	0	0	0	0	0							
1:30-1:44	7	3	4	1	5	1				1			
1:45-1:59	0	0	0	0	0	0							
2:00-2:14	4	0	4	0	4	0							
2:15-2:29	2	2	0	1	1	0							
2:30-2:44	19	19	0	18	1	0							
2:45-2:59	2	2	0	1	1	0							
3:00-3:14	3	0	3	0	3	0							
3:15-3:29	11	5	6	4	6	1		1		2			
3:30-3:44	11	9	2	4	6	1							
3:45-3:59	10	2	8	5	5	0							
4:00-4:14	2	1	1	0	2	0							
4:15-4:29	4	3	1	0	3	1							
4:30-4:44	2	2	0	2	0	0							
4:45-4:59	3	0	3	0	3	0							
5:00-5:14	5	1	4	0	5	0							
5:15-5:29	5	1	4	1	4	0				1			
5:30-5:44	2	1	1	0	2	0							
5:45-5:59	4	2	2	1	2	1							
6:00-6:14	6	0	6	4	2	0					1		
6:15-6:29	4	2	2	0	4	0							
6:30-6:44	0	0	0	0	0	0							
6:45-6:59	2	0	2	0	1	1							
7:00-7:14	3	0	3	2	1	0							
7:15-7:29	7	5	2	3	4	0							
TOTALS	204	0	0	107	97	70	116	18	0	1	0	12	1

Mission/Highway 101



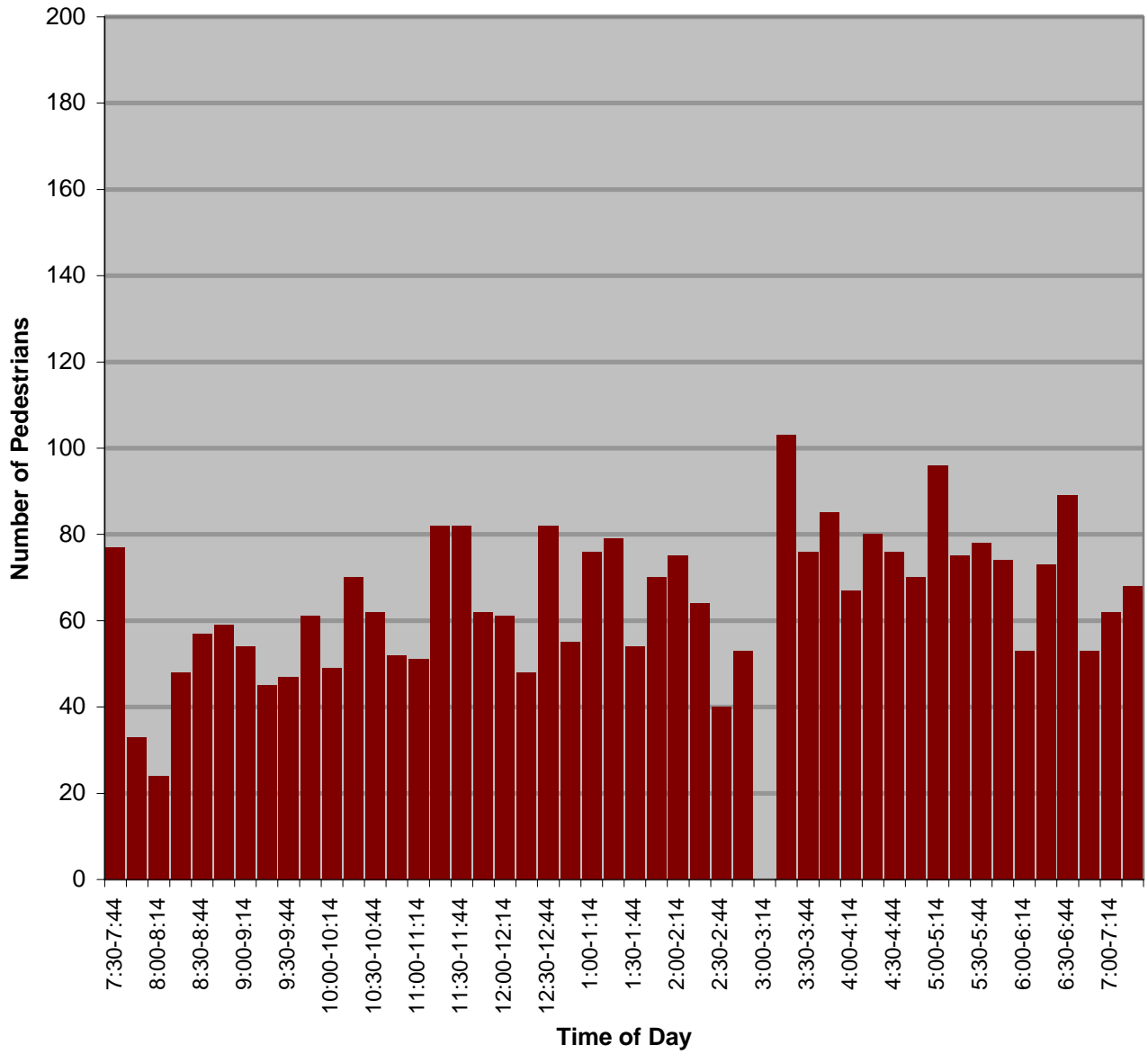
Santa Barbara Pedestrian Count

Intersection of Chapala Street & Carrillo Street

date of count: 5 September 2003

time	TOTAL PEDS	Chapala N-bound	Chapala S-bound	Carrillo E-bound	Carrillo W-bound	Age 0-18	Age 19-64	Age 65+	Wheel-chair	Skate-board	Inline skate	Baby stroller	Scooter
7:30-7:44	77	10	25	35	7	15	58	2					
7:45-7:59	33	3	9	19	2	4	26	3				1	
8:00-8:14	24	5	14	5	0	32	2	0					
8:15-8:29	48	9	18	8	13	0	44	4					
8:30-8:44	57	11	17	11	18	2	48	7		1			
8:45-8:59	59	13	15	13	18	1	50	7		1			
9:00-9:14	54	11	20	9	14	2	47	5				1	
9:15-9:29	45	10	13	14	8	2	35	8					
9:30-9:44	47	2	13	20	12	4	41	2				2	
9:45-9:59	61	15	24	10	12	1	52	8		1			
10:00-10:14	49	10	18	8	13	2	41	6		1		1	
10:15-10:29	70	10	28	15	17	8	54	8	1	1			
10:30-10:44	62	11	20	14	17	3	52	6	1	1			
10:45-10:59	52	4	20	15	13	0	45	7					
11:00-11:14	51	10	12	10	19	2	46	3	1	1			
11:15-11:29	82	7	24	27	24	1	73	8	1				
11:30-11:44	82	13	20	18	31	1	76	5				1	
11:45-11:59	62	10	28	8	16	7	51	4	1	3			
12:00-12:14	61	11	24	4	22	3	52	6	1	1		1	
12:15-12:29	48	9	13	5	21	0	43	5					
12:30-12:44	82	20	23	13	26	2	69	11		1			
12:45-12:59	55	5	12	15	23	1	48	6					
1:00-1:14	76	17	30	10	19	4	68	2					
1:15-1:29	79	11	18	19	31	2	70	7	1	1		2	
1:30-1:44	54	5	21	13	15	6	42	6	1	1		1	
1:45-1:59	70	12	22	10	26	5	59	6		1		1	
2:00-2:14	75	24	25	7	19	3	67	5					
2:15-2:29	64	15	18	4	27	4	57	3	1			1	
2:30-2:44	40	7	14	5	14	7	32	1			2	1	
2:45-2:59	53	18	14	8	13	7	43	3					
3:00-3:14													
3:15-3:29	103	12	36	22	33	17	75	9	1	2		1	
3:30-3:44	76	14	22	14	26	13	56	7					
3:45-3:59	85	8	34	14	29	12	70	3				1	
4:00-4:14	67	10	26	12	19	17	43	5		1			
4:15-4:29	80	14	29	10	27	15	60	5		1		2	
4:30-4:44	76	5	25	8	38	13	54	7					
4:45-4:59	70	9	14	14	33	10	57	3				2	1
5:00-5:14	96	16	31	13	36	5	85	6	2			1	
5:15-5:29	75	14	21	12	28	11	60	5					
5:30-5:44	78	17	22	20	19	11	64	3	1	1			
5:45-5:59	74	6	25	15	28	17	54	3		1			
6:00-6:14	53	14	13	7	19	4	45	4		1			
6:15-6:29	73	21	20	11	21	10	56	6	1				
6:30-6:44	89	10	34	23	22	17	66	6	1	2			
6:45-6:59	53	3	18	10	22	3	45	5					
7:00-7:14	62	11	17	17	17	10	48	4	1			1	
7:15-7:29	68	13	21	10	24	20	42	4		1		1	
TOTALS	3050	515	980	604	951	336	2471	239	16	25	2	22	1

Chapala/Carrillo

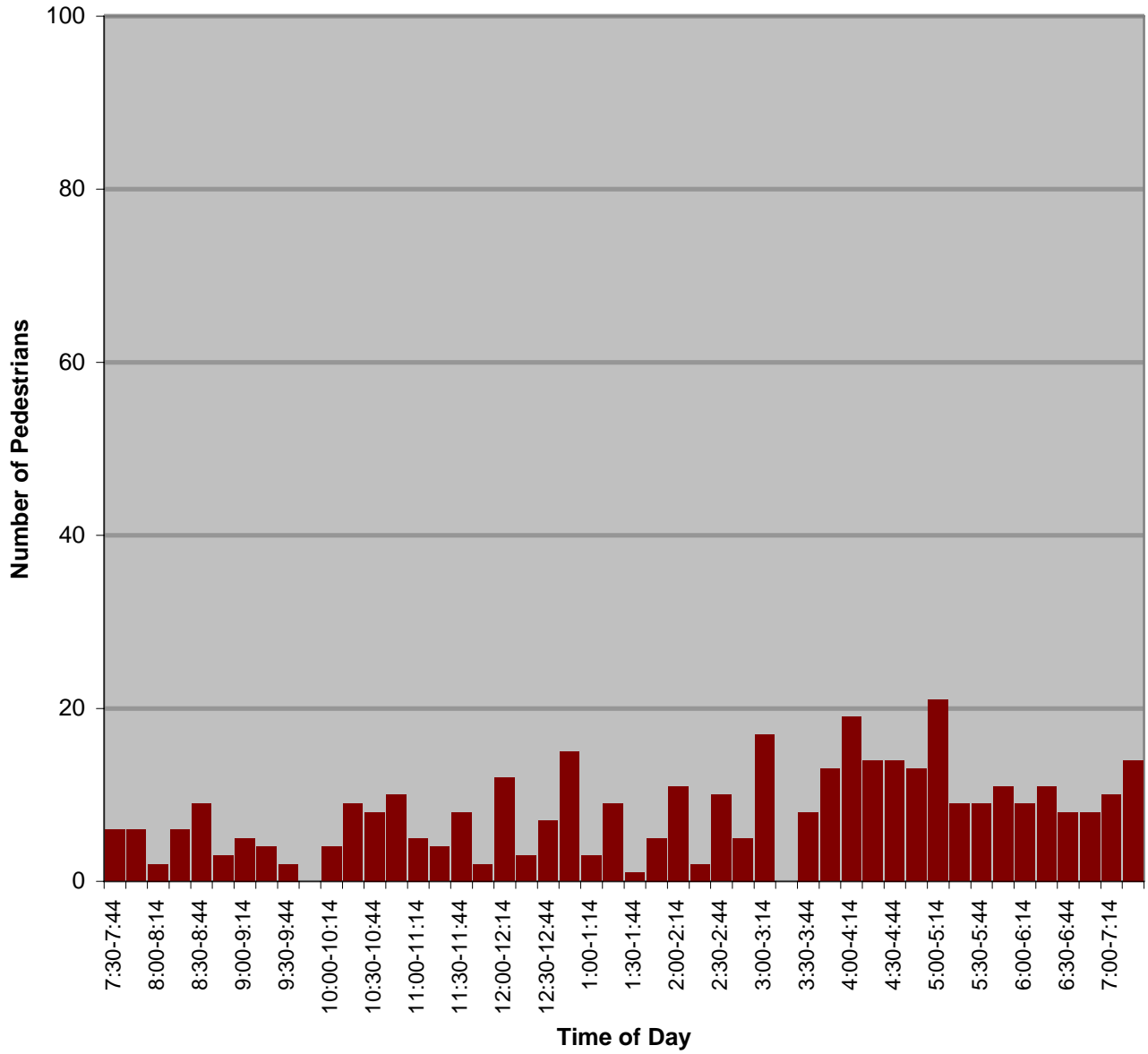


Santa Barbara Pedestrian Count Intersection of Carrillo Street & Highway 101

date of count: 8 September 2003

time	TOTAL PEDS	Carrillo E-bound	Carrillo W-bound	Age 0-18	Age 19-64	Age 65+	Wheel-chair	Skate-board	Inline skate	Baby stroller	Scooter		
7:30-7:44	6	6	0	1	5	0							
7:45-7:59	6	3	3	0	6	0							
8:00-8:14	2	2	0	0	2	0							
8:15-8:29	6	3	3	0	6	0							
8:30-8:44	9	6	3	0	9	0							
8:45-8:59	3	2	1	1	2	0							
9:00-9:14	5	5	0	0	5	0		1					
9:15-9:29	4	2	2	0	4	0							
9:30-9:44	2	2	0	0	2	0							
9:45-9:59	0	0	0	0	0	0							
10:00-10:14	4	2	2	0	3	1							
10:15-10:29	9	7	2	0	8	1							
10:30-10:44	8	7	1	1	4	3				1			
10:45-10:59	10	7	3	0	9	1	1						
11:00-11:14	5	2	3	1	3	1				1			
11:15-11:29	4	0	4	1	3	0							
11:30-11:44	8	5	3	3	5	0				2			
11:45-11:59	2	2	0	0	1	1							
12:00-12:14	12	7	5	2	9	1				1			
12:15-12:29	3	3	0	0	3	0							
12:30-12:44	7	5	2	1	5	1				1			
12:45-12:59	15	7	8	3	11	1							
1:00-1:14	3	2	1	0	2	1	1						
1:15-1:29	9	3	6	4	5	0				1			
1:30-1:44	1	1	0	0	1	0							
1:45-1:59	5	4	1	0	4	1	1						
2:00-2:14	11	3	8	4	7	0		1		2			
2:15-2:29	2	2	0	0	2	0							
2:30-2:44	10	5	5	1	8	1				1			
2:45-2:59	5	1	4	1	4	0				1			
3:00-3:14	17	13	4	4	11	2				1			
3:15-3:29													
3:30-3:44	8	4	4	2	4	2		1					
3:45-3:59	13	4	9	1	11	1	1						
4:00-4:14	19	9	10	5	14	0				3			
4:15-4:29	14	5	9	2	11	1							
4:30-4:44	14	9	5	2	11	1		1					
4:45-4:59	13	4	9	2	10	1							
5:00-5:14	21	7	14	3	18	0				1			
5:15-5:29	9	2	7	2	6	1							
5:30-5:44	9	7	2	1	6	0							
5:45-5:59	11	6	5	2	9	0							
6:00-6:14	9	0	9	1	7	1							
6:15-6:29	11	3	8	2	9	0				1			
6:30-6:44	8	5	3	1	7	0				1			
6:45-6:59	8	3	5	0	8	0							
7:00-7:14	10	1	9	1	9	0							
7:15-7:29	14	8	6	7	7	0				1			
TOTALS	384	0	0	196	188	62	296	24	4	4	0	19	0

Carrillo/Highway 101

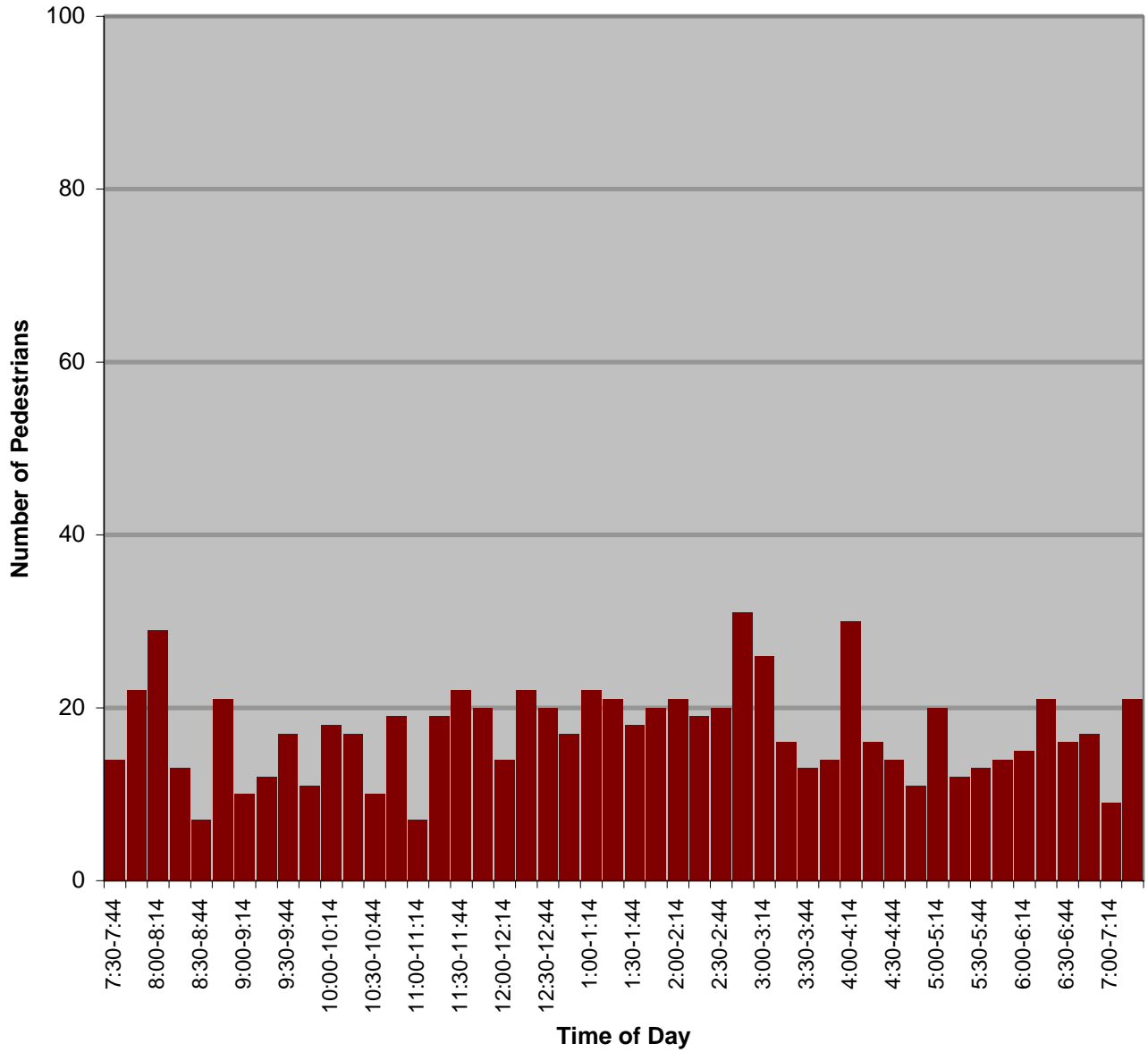


Santa Barbara Pedestrian Count Intersection of Cliff Drive & Meigs Road

date of count: 10 September 2003

time	TOTAL PEDS	Meigs N-bound	Meigs S-bound	Cliff E-bound	Cliff W-bound	Age 0-18	Age 19-64	Age 65+	Wheel-chair	Skate-board	Inline skate	Baby stroller	Scooter
7:30-7:44	14	5	2	5	2	5	9	0					
7:45-7:59	22	4	13	5	0	8	12	2					
8:00-8:14	29	3	19	6	1	12	15	2				3	
8:15-8:29	13	5	1	6	1	3	7	3				3	
8:30-8:44	7	0	3	3	1	1	3	3					
8:45-8:59	21	2	8	4	7	4	11	6				2	
9:00-9:14	10	4	3	2	1	0	8	2					
9:15-9:29	12	4	5	1	2	1	9	2					
9:30-9:44	17	1	3	7	6	0	15	2					
9:45-9:59	11	0	4	5	2	1	9	1					
10:00-10:14	18	10	5	2	1	1	15	2				1	
10:15-10:29	17	1	8	4	4	2	14	1				2	
10:30-10:44	10	3	2	3	2	0	8	2					
10:45-10:59	19	4	4	11	0	3	12	4				3	
11:00-11:14	7	0	2	2	3	0	4	3					
11:15-11:29	19	5	4	7	3	0	16	3					
11:30-11:44	22	3	6	8	5	0	20	0					
11:45-11:59	20	7	6	5	2	1	16	3					
12:00-12:14	14	8	3	1	2	1	8	5	1				
12:15-12:29	22	8	4	9	1	1	20	1					
12:30-12:44	20	1	5	8	6	3	14	3				1	
12:45-12:59	17	7	4	5	1	3	13	1				1	
1:00-1:14	22	1	4	8	9	1	20	1		1		1	
1:15-1:29	21	5	9	5	2	1	17	3					
1:30-1:44	18	5	4	3	6	0	14	4	1				
1:45-1:59	20	5	5	9	1	1	17	2					
2:00-2:14	21	5	7	3	6	0	16	5					
2:15-2:29	19	3	9	4	3	2	15	2				1	
2:30-2:44	20	10	3	2	5	3	13	4				1	
2:45-2:59	31	16	9	5	1	14	13	4					
3:00-3:14	26	2	0	9	15	1	20	4					
3:15-3:29	16	3	2	3	8	9	4	3					
3:30-3:44	13	3	1	7	2	5	6	2					
3:45-3:59	14	3	3	3	5	6	5	3					1
4:00-4:14	30	0	9	6	15	11	14	5				1	
4:15-4:29	16	7	2	5	2	4	9	3					
4:30-4:44	14	5	2	5	2	3	11	0					
4:45-4:59	11	5	3	2	1	1	8	2					
5:00-5:14	20	2	6	3	9	9	11	0					
5:15-5:29	12	3	2	4	3	1	10	1				1	
5:30-5:44	13	5	3	1	4	3	9	1				1	
5:45-5:59	14	4	2	8	0	3	7	4				1	
6:00-6:14	15	4	5	2	4	3	10	2					
6:15-6:29	21	7	4	7	3	5	15	1					
6:30-6:44	16	4	8	2	2	4	10	2					
6:45-6:59	17	4	1	8	4	5	12	0				1	
7:00-7:14	9	1	2	4	2	0	5	4					
7:15-7:29	21	4	13	2	2	5	15	1					
TOTALS	831	201	232	229	169	150	564	114	2	1	0	24	1

Cliff/Meigs



Santa Barbara Pedestrian Count

Intersection of Carrillo Street & San Andres Street

date of count: 12 September 2003

time	TOTAL PEDS	Meigs N-bound	Meigs S-bound	Cliff E-bound	Cliff W-bound	Age 0-18	Age 19-64	Age 65+	Wheel-chair	Skate-board	Inline skate	Baby stroller	Scooter
7:30-7:44	36	9	8	9	10	14	16	1				4	
7:45-7:59	29	4	3	7	15	9	18	0				3	
8:00-8:14	28	8	4	8	8	14	13	1	1				
8:15-8:29	16	5	5	3	3	6	10	0		2			
8:30-8:44	11	1	1	1	8	3	8	0					
8:45-8:59	14	2	11	0	1	4	14	0				2	
9:00-9:14	8	0	3	2	3	1	7	0					
9:15-9:29	11	2	4	2	3	2	8	1				2	
9:30-9:44	6	0	1	2	3	2	3	1					
9:45-9:59	10	4	5	0	1	1	8	1					
10:00-10:14	6	1	2	2	1	1	5	0					
10:15-10:29	9	0	3	1	5	0	8	1	1			1	
10:30-10:44	5	2	0	0	3	0	3	2	1				
10:45-10:59	10	1	3	2	4	3	9	0				1	
11:00-11:14	14	4	2	2	6	5	7	2				1	
11:15-11:29	7	2	1	0	4	0	7	0					
11:30-11:44	16	6	2	3	5	6	9	1				4	
11:45-11:59	6	2	0	0	4	1	5	0				1	
12:00-12:14	6	2	0	1	3	0	5	1					
12:15-12:29	13	7	3	0	3	3	10	0		1			
12:30-12:44	7	0	2	0	5	0	7	0					
12:45-12:59	4	1	1	0	2	1	3	0					
1:00-1:14	12	2	6	1	3	8	4	0		4			
1:15-1:29	7	3	1	0	3	1	6	0					
1:30-1:44	11	5	1	0	5	4	7	0		1			
1:45-1:59	5	1	3	0	1	1	3	1	1				
2:00-2:14	12	3	2	1	6	1	10	1					
2:15-2:29	7	2	1	2	2	3	3	1					
2:30-2:44	21	5	1	2	13	5	15	1		2			1
2:45-2:59	48	6	25	1	16	37	11	0				3	2
3:00-3:14	27	1	17	1	8	17	9	1				1	
3:15-3:29	12	2	1	0	9	6	6	0					
3:30-3:44	32	1	13	0	18	15	17	0				1	2
3:45-3:59	24	4	8	1	11	11	12	1					1
4:00-4:14	21	2	10	2	7	10	10	1		1		1	1
4:15-4:29	27	2	6	1	18	11	15	1					1
4:30-4:44	21	5	3	2	11	7	14	0					1
4:45-4:59	31	4	6	4	17	8	22	1				1	3
5:00-5:14	28	9	12	1	6	10	16	2					2
5:15-5:29	34	4	7	7	16	6	28	0				1	
5:30-5:44	33	11	6	3	13	10	21	2	1				
5:45-5:59	30	3	5	6	16	6	23	1		1			
6:00-6:14	18	4	4	0	10	5	12	1					
6:15-6:29	17	6	0	4	7	5	11	1		1			
6:30-6:44	14	1	6	0	7	3	10	1					
6:45-6:59	25	4	4	4	13	3	22	0					
7:00-7:14	36	8	11	2	15	6	28	2					1
7:15-7:29	15	6	5	2	2	1	14	0					
TOTALS	840	167	228	92	353	276	532	31	5	13	0	27	15

Carrillo/San Andres

