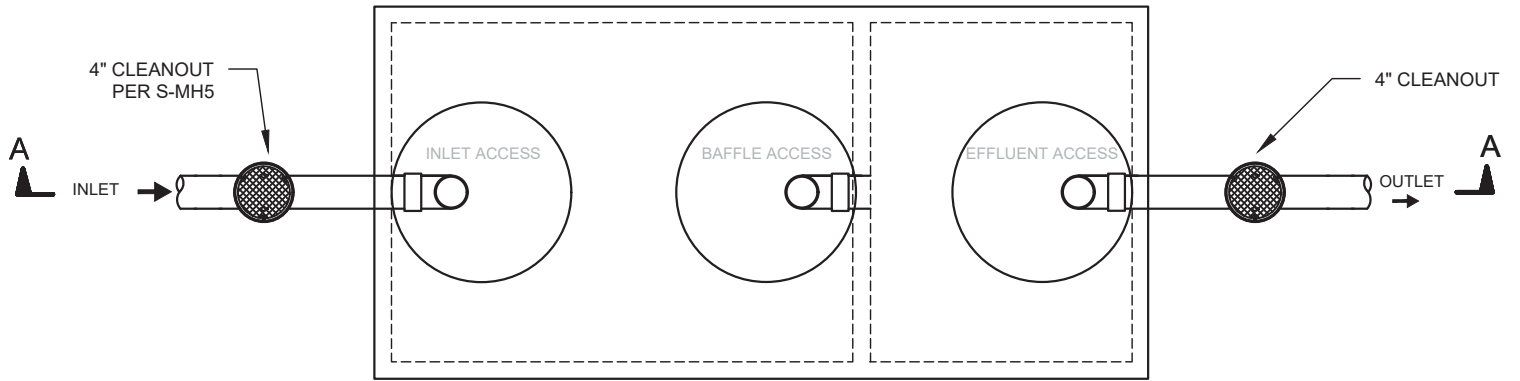
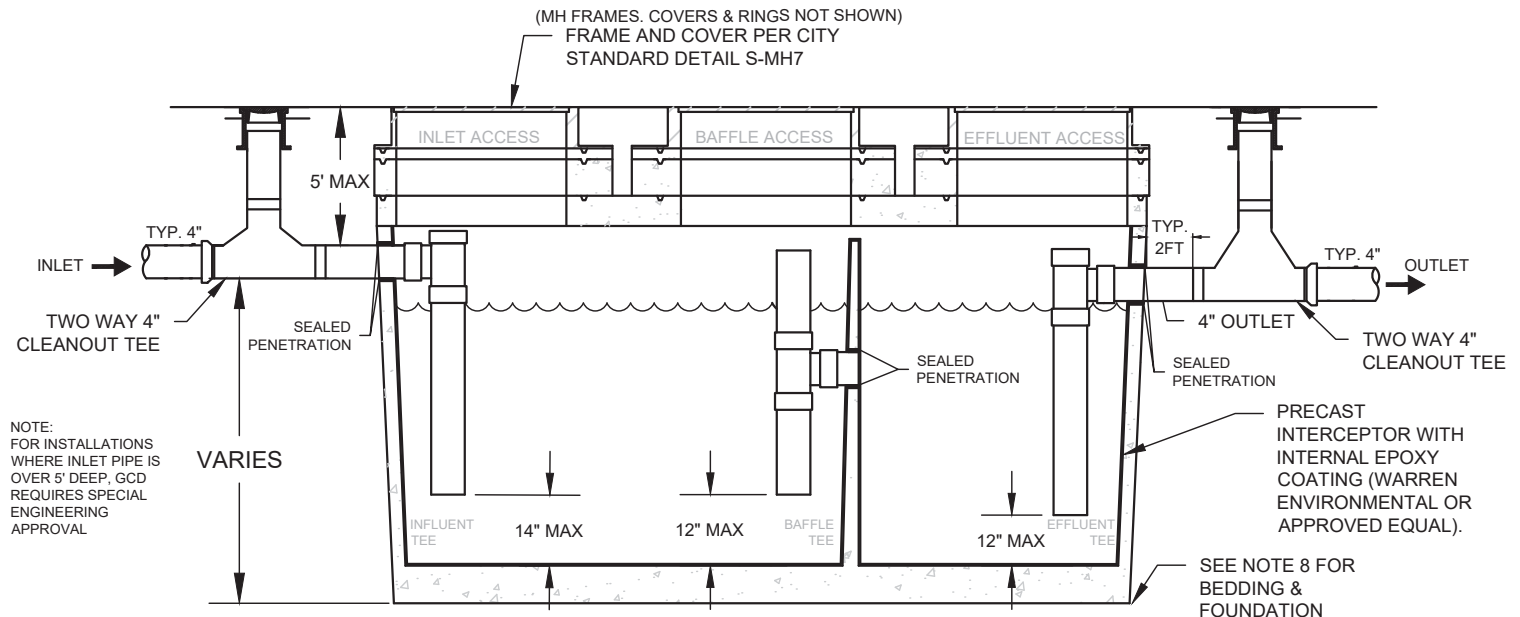


GREASE CONTROL DEVICE (GCD)



PLAN VIEW



SECTION A-A

- NOTES**
1. GREASE CONTROL DEVICES (GCD) ARE NOT INTENDED FOR DOMESTIC SEWAGE. LOCATION AND TRIBUTARY DISCHARGE SOURCES SHALL BE APPROVED BY BUILDING & SAFETY PRIOR TO INSTALLATION AND CONNECTION TO CITY SEWER. CONNECTIONS TO GCD SHALL NOT ALLOW INTRODUCTION OF EMULSIFIERS OR CHEMICALS CAUSING PASS THROUGH.
 2. EACH GCD SHALL BE INSTALLED ON PRIVATE PROPERTY AND CONNECTED SO THAT IT SHALL BE EASILY ACCESSIBLE FOR INSPECTION, CLEANING AND REMOVAL OF THE INTERCEPTED GREASE.
 3. EACH GCD SHALL BE SIZED TO MEET EXPECTED SOLIDS LOADING TO COMPLY WITH CITY FATS, OILS AND GREASE PROGRAM AND COMPLY WITH HYDRAULIC CAPACITY PER CALIFORNIA PLUMBING CODE SECTION 1014.2.1.

MATERIALS:

4. ALL INTERNAL PIPING SHALL BE 4" OR 6" TO MATCH LATERAL DIAMETER. INTERNAL PIPING MATERIAL SHALL BE HDPE OR PVC. NO METALLIC PIPE WILL BE ALLOWED TO BE USED FOR INTERNAL PIPING FOR THE GCD. CONTRACTOR TO CONNECT LATERAL PIPING TO GCD WITH ALL NECESSARY FITTINGS.
5. INTERCEPTOR LOCATED IN AN AREA SUBJECT TO TRAFFIC MUST BE HS-20 TRAFFIC RATED.
6. FOR NON TRAFFIC LOCATIONS, NON-PRECAST INTERCEPTORS MADE OF POLYPROPELENE(ENDURA XL OR APPROVED EQUAL) IS ACCEPTABLE.
7. ALL PRE-CAST CONCRETE GCDS SHALL BE EPOXY LINED PRIOR TO ENTERING SERVICE USING WARREN ENVIRONMENTAL EPOXY COATING (OR APPROVED EQUAL). MINIMUM LINING THICKNESS SHALL BE 125 MILS.

TESTING:

8. EPOXY LINING SHALL BE PULL TESTED PER ASTM-D4541 AND SECTION 500-2.4.4 IN GREENBOOK. ALL TEST LOCATIONS SHALL BE REPAIRED 2" PAST EDGE OF SCORE. RESULTS SHALL BE SUBMITTED TO WASTEWATER COMPLIANCE SPECIALIST FOR APPROVAL.

BEDDING:

9. INTERCEPTOR SHALL BE PLACED ON A MINIMUM OF 6" TYPE I BEDDING MATERIAL, COMPACTED TO 95% RELATIVE COMPACTION.



GREASE CONTROL DEVICE (GCD)

REV. DATE: 06/2020 DETAIL: MISC-FOG

APPROVED:

Brian D. Am...
CITY ENGINEER

Rebecca Bjork
PUBLIC WORKS DIRECTOR