



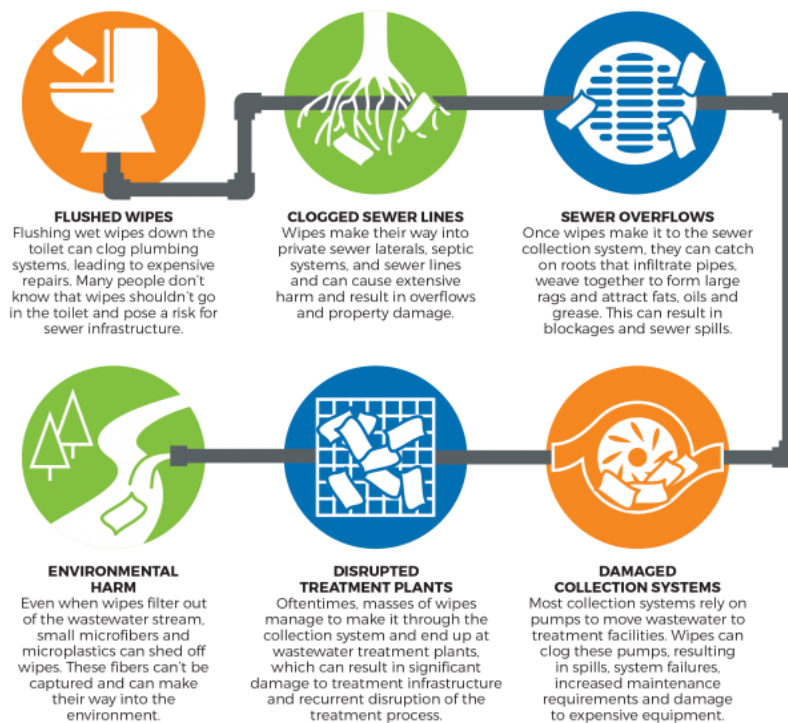
Are 'Flushable Wipes' Really Flushable?

There are many relatively new bathroom products on the market that are advertised as a better cleaning experience when compared to traditional toilet paper. Many of these products' labels indicate they are safe for sewers and/or are flushable. These items may go down the toilet but they are not breaking down sufficiently enough.

Flushable wipes are marketed in a variety of ways, such as "septic-safe", "breaks down like toilet paper" or "safe for sewer and septic." The problem is that they generally take longer to break down when compared to traditional toilet paper and potentially causing major blockages in sewer and septic systems.

Generally, sewer systems work on a gravity or down-hill system. However, some areas in the City run on a pump system. While a flushable wipes might eventually break down, it is likely that it will not break down fast enough before the wipes make it to the first pumping station within City's sewer lines. Even if it does break down into smaller pieces, those thicker-than-toilet-paper chunks can also become stuck in the pumps and cause messy damage.

City's employees are responding to blockage in pumps due to wipe four times more frequently than prior to the COVID-19 pandemic. That is a lot of employee hours spent on cleaning up something that is eventually just going to end up in the trash anyway. So please save us the extra work and the spending of ratepayer dollars by tossing the wipes in the trash after using them.



Graphic courtesy of the California Association of Sanitation Agencies