

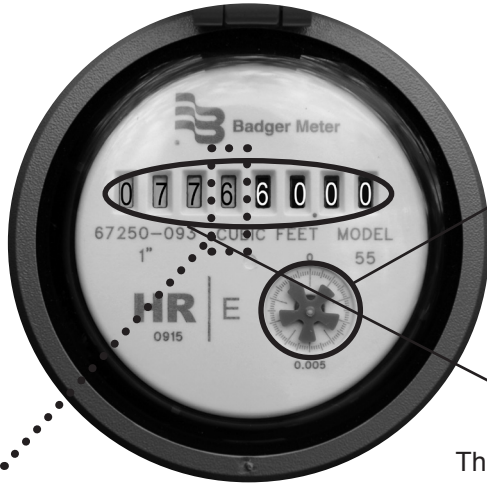


Let's Save Together waterwise

City of Santa Barbara

Your Meter

Most meters are located in a box in the ground near the street. Open the lid to read your meter inside.



FLOW INDICATOR:
Spins when water flows through the meter.
If the snowflake is moving and you are not aware of any water being used, you may have a leak.



REGISTER:
The numbers with the white background are read each month for your bill.
These meters are showing a reading of 0776.60 HCF (hundred cubic feet).

One revolution of this digit = 1 billing unit = 1 HCF.

One spin of the needle = 7.48 gallons.

Your water bill

How to use your meter

Your water meter measurements are based in cubic ft.

1 cubic foot = 7.48 gallons

1 billing unit = 1 HCF (Hundred Cubic Foot) = 748 gallons

To find the amount of water used by a specific appliance, irrigation system, or to check for leaks, record meter readings before and after a water usage event.

Example: Record the number on your meter. Run your irrigation for 30 minutes (with no other water being used) and record the new meter reading.

Reading after 30 mins: 0776.60 HCF
Original reading: - 0776.10 HCF



Difference (water used) = .50 HCF, or an increase of 50 cubic feet.

To convert to gallons, multiply 50 cubic feet x 7.48 gallons = 374 gallons used in 30 minutes.

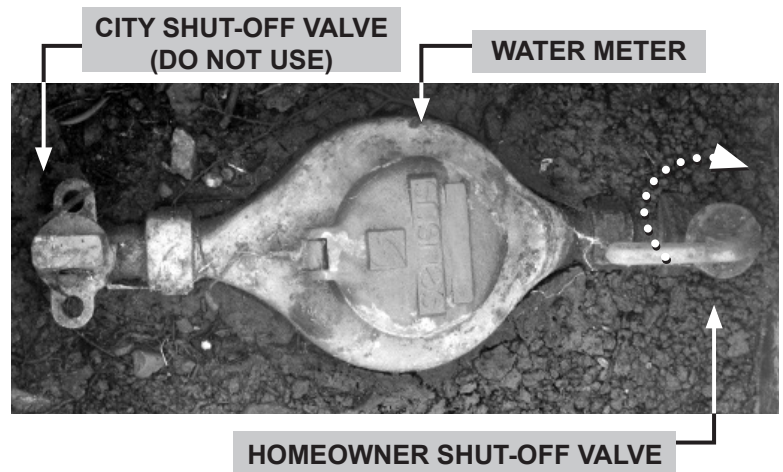
To find your monthly water usage and average daily water usage, reference your water bill.

Shut-off valve

How to shut off your water

Shut-off Valve

Most homes have a shut-off valve where the water line enters the house and/or at the water meter. In case of a broken pipe or when repairing plumbing, shut off the valve by turning the valve perpendicular to the pipe. If you do not have a homeowner shut-off valve, or if it doesn't easily turn, call (805) 564-5413.



Water Conservation Program (805) 564-5460 or SantaBarbaraCA.gov/WaterWise