

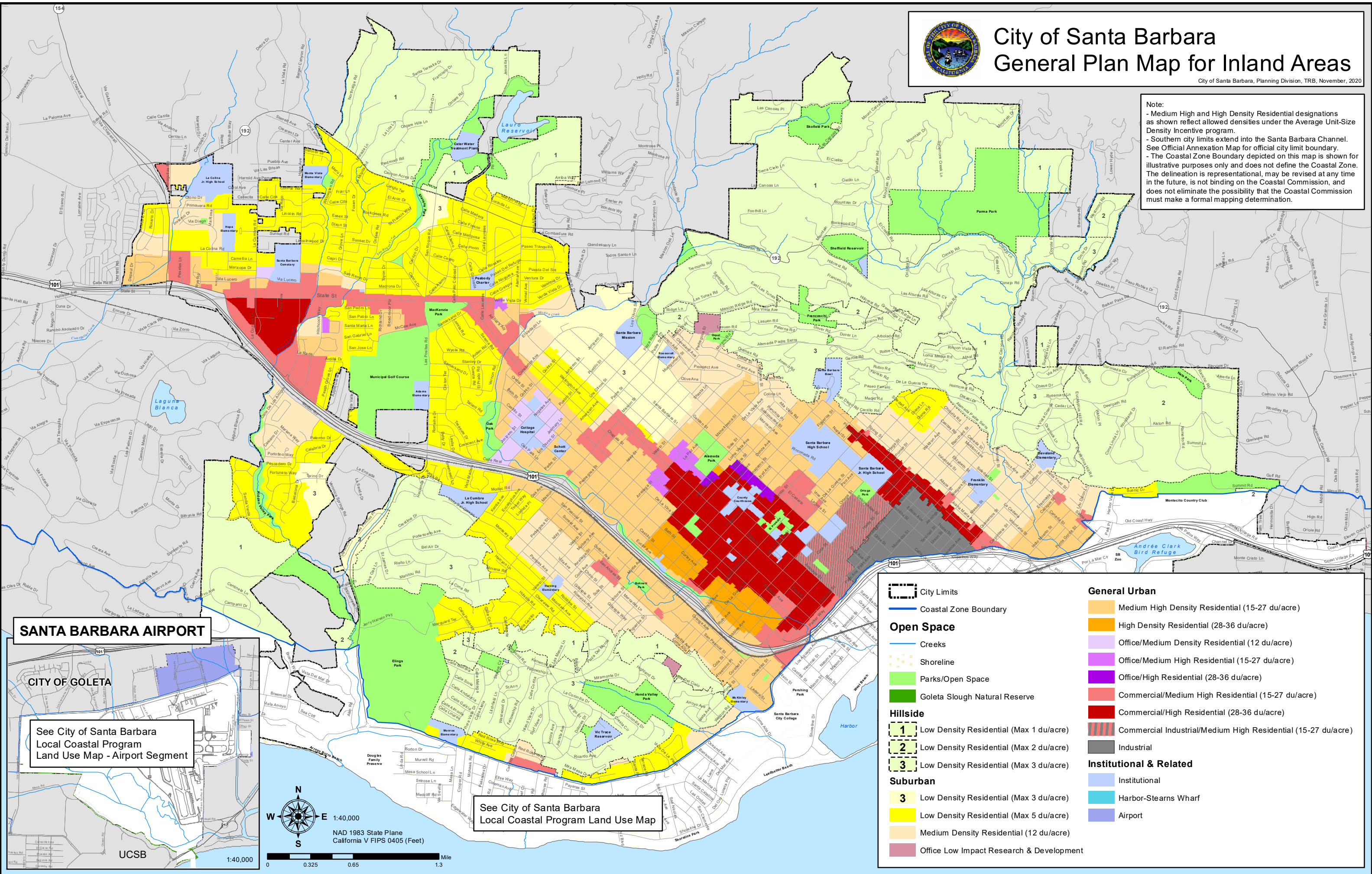


City of Santa Barbara General Plan Map for Inland Areas

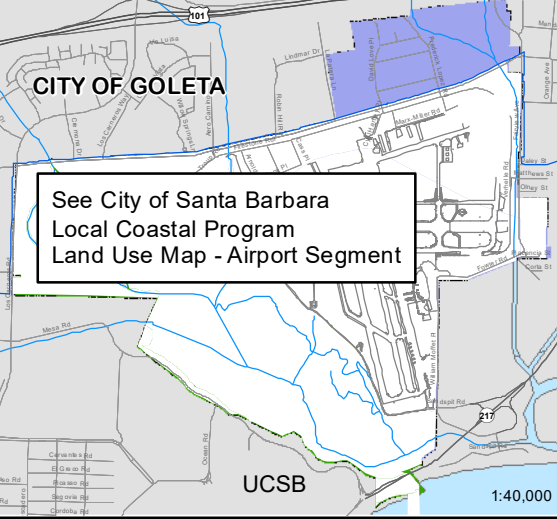
City of Santa Barbara, Planning Division, TRB, November, 2020

Note:

- Medium High and High Density Residential designations as shown reflect allowed densities under the Average Unit-Size Density Incentive program.
- Southern city limits extend into the Santa Barbara Channel. See Official Annexation Map for official city limit boundary.
- The Coastal Zone Boundary depicted on this map is shown for illustrative purposes only and does not define the Coastal Zone. The delineation is representational, may be revised at any time in the future, is not binding on the Coastal Commission, and does not eliminate the possibility that the Coastal Commission must make a formal mapping determination.

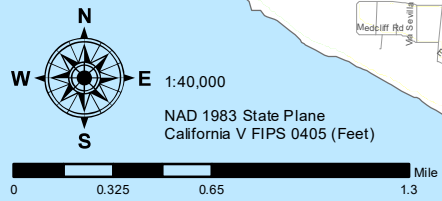


SANTA BARBARA AIRPORT



See City of Santa Barbara Local Coastal Program Land Use Map - Airport Segment

See City of Santa Barbara Local Coastal Program Land Use Map



	City Limits		Medium High Density Residential (15-27 du/acre)
	Coastal Zone Boundary		High Density Residential (28-36 du/acre)
	Creeks		Office/Medium Density Residential (12 du/acre)
	Shoreline		Office/Medium High Residential (15-27 du/acre)
	Parks/Open Space		Office/High Residential (28-36 du/acre)
	Goleta Slough Natural Reserve		Commercial/Medium High Residential (15-27 du/acre)
	Hillside 1 Low Density Residential (Max 1 du/acre)		Commercial/High Residential (28-36 du/acre)
	Hillside 2 Low Density Residential (Max 2 du/acre)		Commercial Industrial/Medium High Residential (15-27 du/acre)
	Hillside 3 Low Density Residential (Max 3 du/acre)		Industrial
	Suburban 3 Low Density Residential (Max 3 du/acre)		Institutional
	Suburban 5 Low Density Residential (Max 5 du/acre)		Harbor-Stearns Wharf
	Medium Density Residential (12 du/acre)		Airport
	Office Low Impact Research & Development		