

Station 1 SCBA Compressor

Chpt: XIV Miscellaneous Equipment

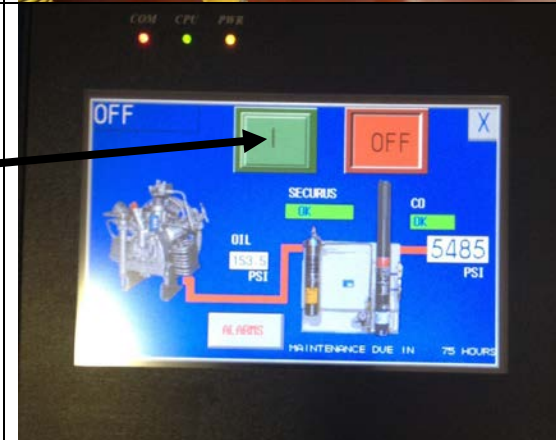
Revised: 09/01/2016 Pages: 6

The Bauer CFS 5.5 compressor at Station 1 is capable of filling SCBA bottles up to 5500 psi. The BAUER 5.5 Series of Containment Fill Stations were independently tested to the same rigorous standards and stringent test parameters Dictated by NFPA 1901.

The following instructions shall be followed for safety of the operator and efficiency of the compressor.



On the touch screen turn the compressor on by pushing the green "I" button.



Open the bottle door.



SCBA Compressor

Connect the bottle to the fill hose. This is a 4500 psi bottle. Close the bleeder valves and completely open the bottle valve.

BEFORE FILLING CONFIRM THE REGULATOR IS SET AT 4500 PSI AND NOT 5500 PSI.



Connect a 5500 psi bottle to the fill hose by removing the thread protector from the fill side of the valve.



Close and confirm the Blast Chamber door is latched.



When Banks have more than 4500/5500 psi use the compressor as a cascade system opening and filling bottles from one bank at a time.



SCBA Compressor

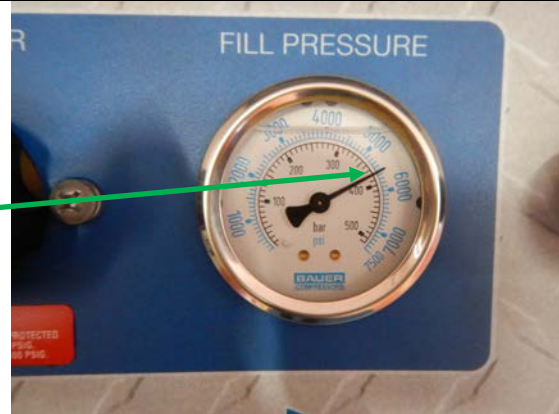
4500 PSI bottles need to be filled to 4500 PSI by setting 'FILL PRESSURE' to 4500 PSI.

4500 PSI



5500 PSI bottles need to be filled to 5500 PSI by setting 'FILL PRESSURE' to 5500 PSI.

5500 PSI



When using compressor as a cascade system turn the 'FILL FROM' valve towards 'STORAGE'.

Open first Bank to be used for filling.

Using the regulator adjust the pressure from 0 to the desired filling PSI.



Slowly fill bottles by opening the Fill Valves. The slower the better as a fast fill will heat the incoming air which will allow pressure to lower as the bottle cools.

When bottle reaches desired PSI close Fill valves.



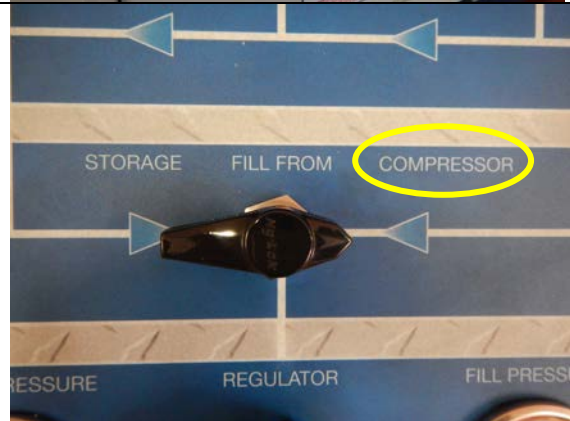
SCBA Compressor

4500 PSI bottles: open door, close bottle valve, bleed air in fill hose, and disconnect bottle.

5500 PSI bottles: open door, bleed air fill hose, and disconnect bottle.



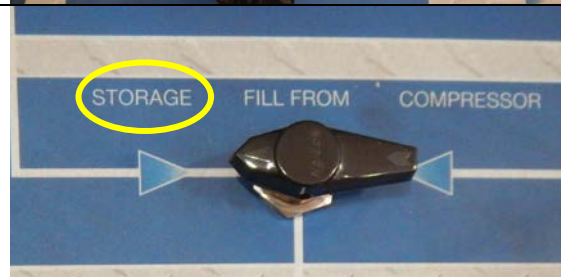
When all BANKS have less than 4500/5500 PSI turn the 'FILL FROM' valve to 'COMPRESSOR'.



When all bottles are full you will need to shut down and bleed the compressor. Start with closing all 'BANKS'.



Place the 'FILL FROM' valve to the 'STORAGE' position.



SCBA Compressor

Using the 'FILL #1' valve bleed the 'FILL PRESSURE' down to zero.



'FILL PRESSURE' is left at zero when compressor is not being used.



Leave the compressor in the 'ON' position to refill all 'BANKS'.



For service call:

Compressed Air Specialists
(714) 991-8800



SCBA Compressor

Bauer Compressor Manual	MANUAL LINK
CFS III Series Manual	MANUAL LINK
Station 1 Compressor PowerPoint	POWERPOINT LINK