

Planned & Actual Water Production By Source (Acre-Feet)

Report Month:

January

Water Year: 2020

	Cachuma Project			Gibraltar Reservoir		Devil's Canyon	Mission Tunnel		Groundwater Production					Desalination		State Water		Net Overlap Water	Groundwater Recharge		Blend Water		Potable System Total		Recycled System		El Estero Process Usage		Water System Total	
	Plan	Act.	Balance	Plan	Act.	Actual	Plan	Act.	Plan	SU #1	Foot-hill Basin	Total Actual	SU#3 Actual	Plan	Act.	Plan	Act.	Act.	Injec.	Total Actual	Plan	Act.	Plan	Act.	Plan	Act.	Plan	Act.	Plan	Act.
2019 Oct	509	134	22,241	195	466	0	44	94	0	22	0	22	0	240	273	0	0	-8	0	0	3	12	985	969	84	85	15	28	1,084	1,082
Nov	347	122	22,048	195	376	0	44	94	0	0	0	0	0	240	246	0	0	-12	0	0	3	0	823	826	54	51	15	27	892	904
Dec	296	115	21,905	195	221	0	44	88	0	0	0	0	0	240	217	0	0	-10	0	0	3	0	772	632	37	7	15	27	824	666
2020 Jan	383	140	21,794	0	190	0	44	92	0	0	0	0	0	240	273	0	0	-11	0	0	3	0	664	684	19	16	15	27	698	727
Feb	645			0			44		0					0		0					3		686		20		15		721	
Mar	801			0			44		0					0		0					3		842		19		15		876	
Apr	875			0			44		0					0		0					3		916		48		15		979	
May	993			0			44		0					0		0					3		1,034		76		15		1,125	
Jun	740			0			44		0					240		0					3		1,021		98		15		1,134	
Jul	797			0			44		0					240		0					3		1,078		119		15		1,212	
Aug	853			0			44		0					240		0					3		1,134		113		15		1,262	
Sep	777			0			44		0					240		0					3		1,058		114		15		1,187	
Year to Date	1,535	510	21,794	585	1,254	0	176	367	0	22	0	22	0	960	1,010	0	0	-40	0	0	12	12	3,244	3,111	195	159	60	108	3,499	3,379
Annual Total	8,016			585			528		0					1,920		0					36		11,013		800		180		11,993	
Notes			*3										*6							*1	*5	*1	*2			*4				

- *1 Groundwater recharge & Blend Water not part of potable system use.
- *2 Based on 2013 potable system production of 13,765 AF with 20% conservation.
- *3 Cachuma Balance: Net of entitlement, carryover, spills, & transfers, per COMB
- *4 Effective 2011 WY, Net Production to Distribution System (Meter Distr. Flow - EEWTP process water).
- *5 Planned blend water assumes additional downtime for recycled system repairs.
- *6 Groundwater from Storage Unit #3 is non-potable water serving recycled water demands.

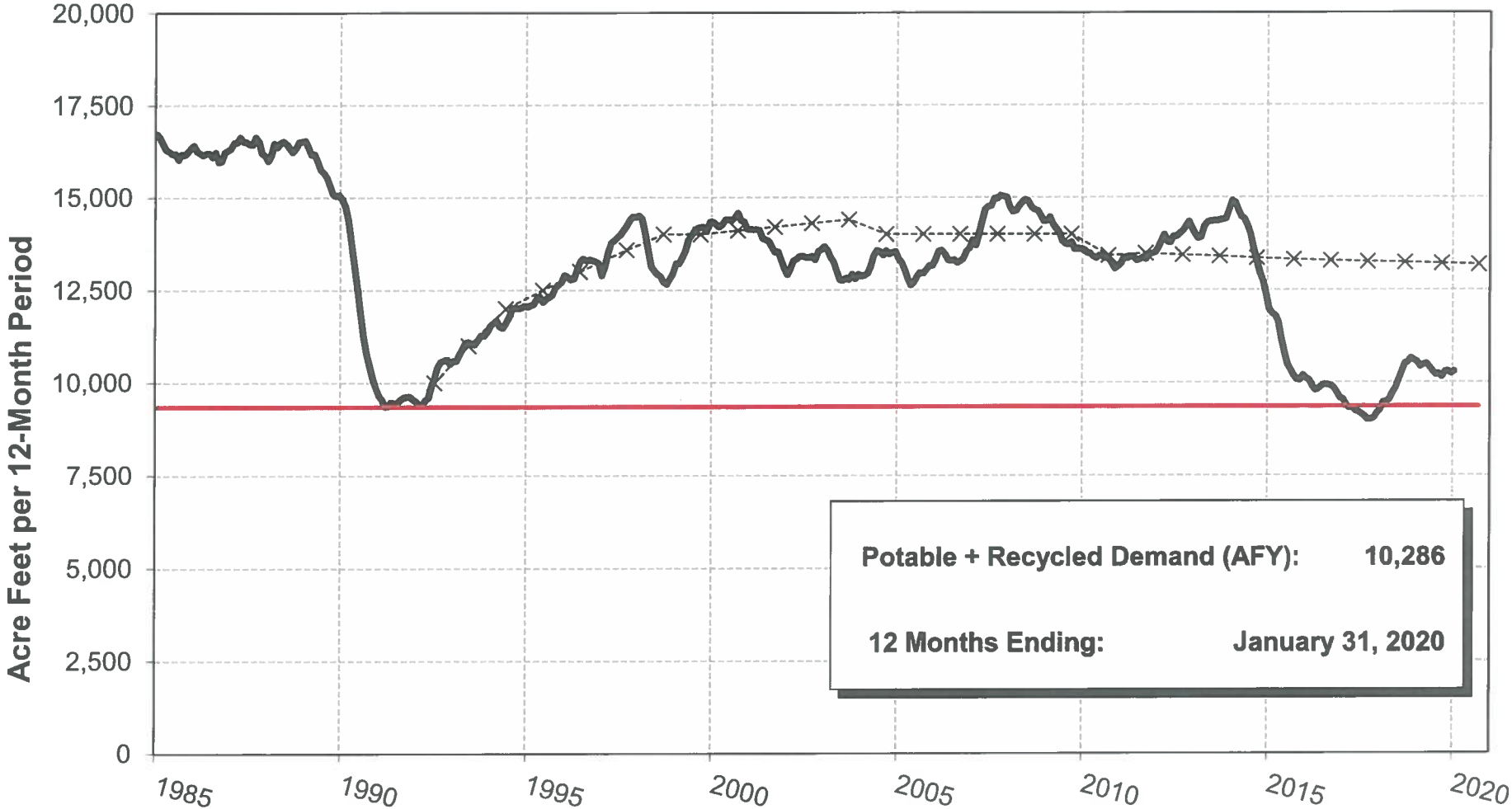
YTD Percent of Target:	95.9%	81.7%	96.6%
	Potable	Recycled	System

Potable System V = C+F+G+I+M+P+R+S-U-W

 = Preliminary Data or Not Yet Available

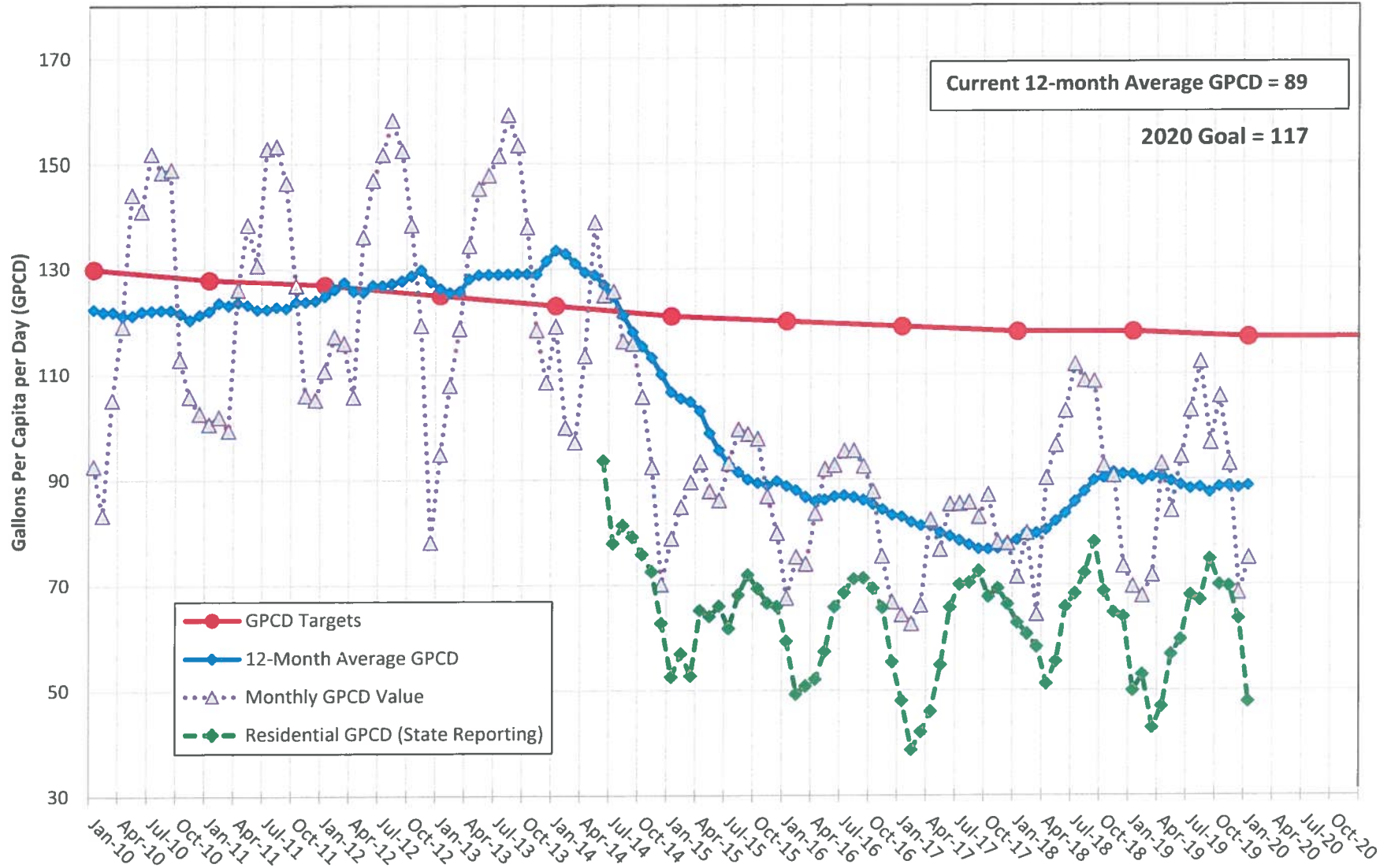
City of Santa Barbara Water Demand

Moving 12-Month Production to Serve Potable + Recycled Systems



--x-- LTWSP Projection — Moving 12-Month Production

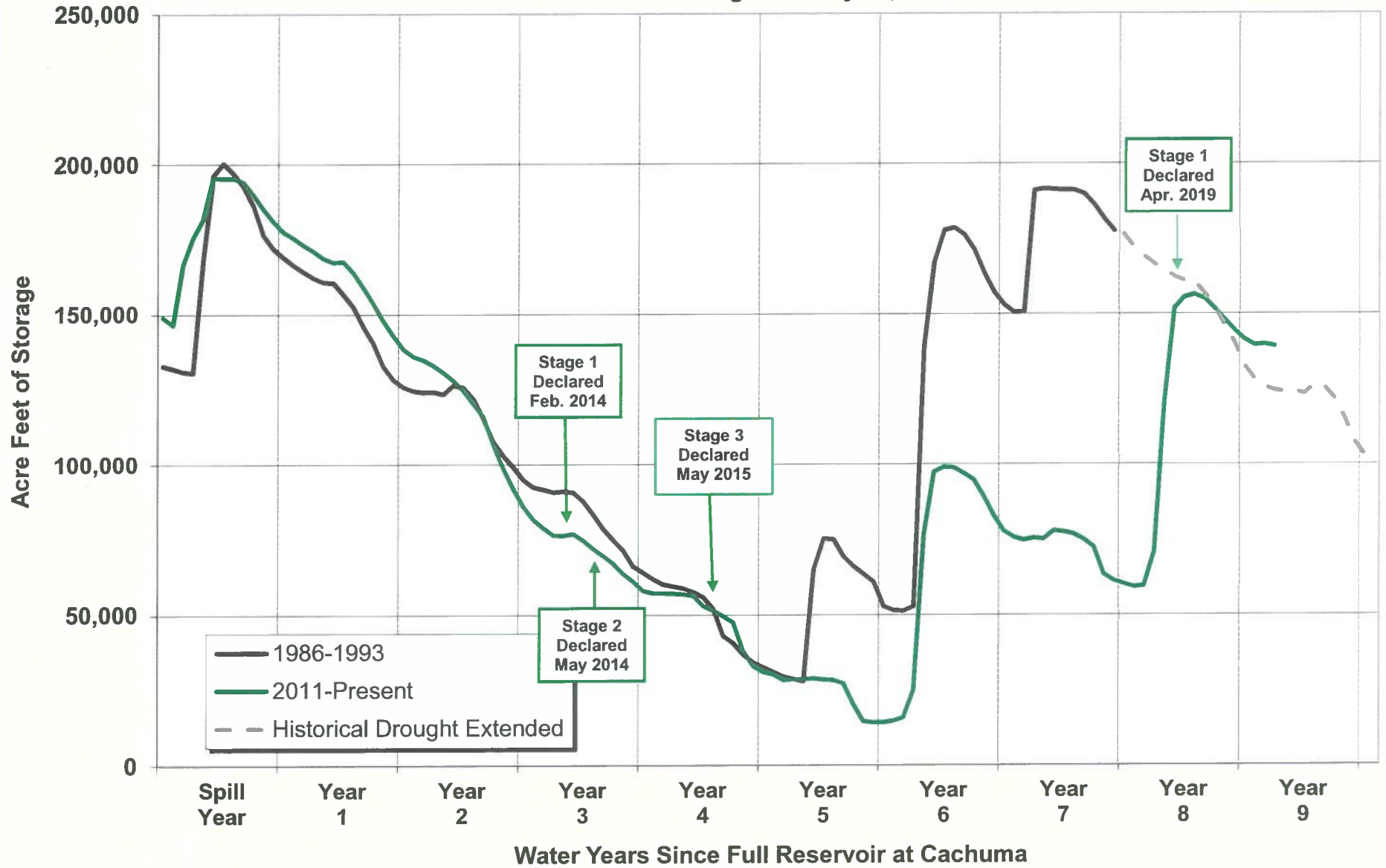
City of Santa Barbara Water Use in Gallons Per Capita per Day (GPCD) January 31, 2020



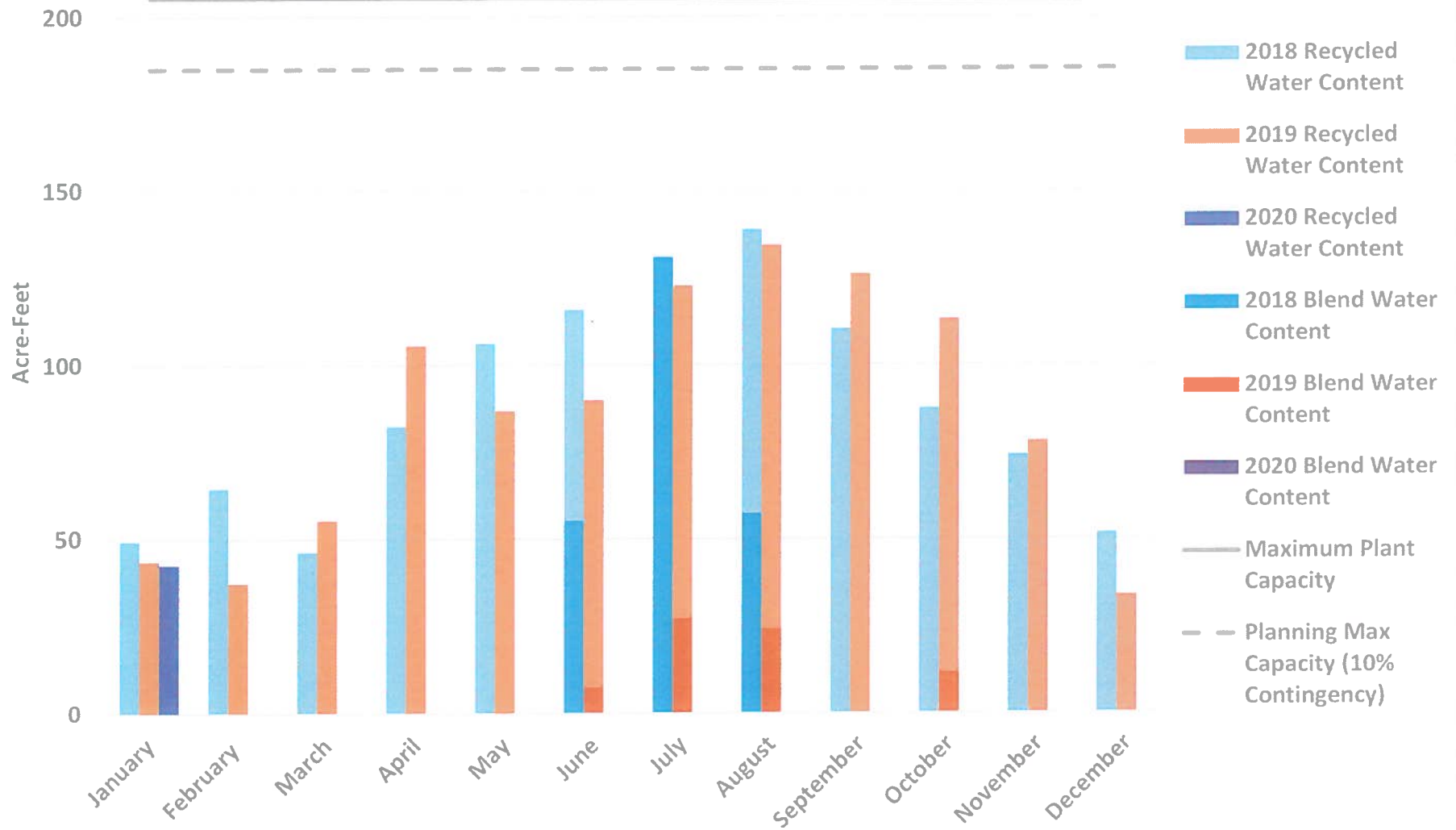
NOTE: The GPCD values above exclude blend water for recycled water production.

Cachuma Storage: Current Drought & 1986-93 Period

Data Shown Through January 31, 2020

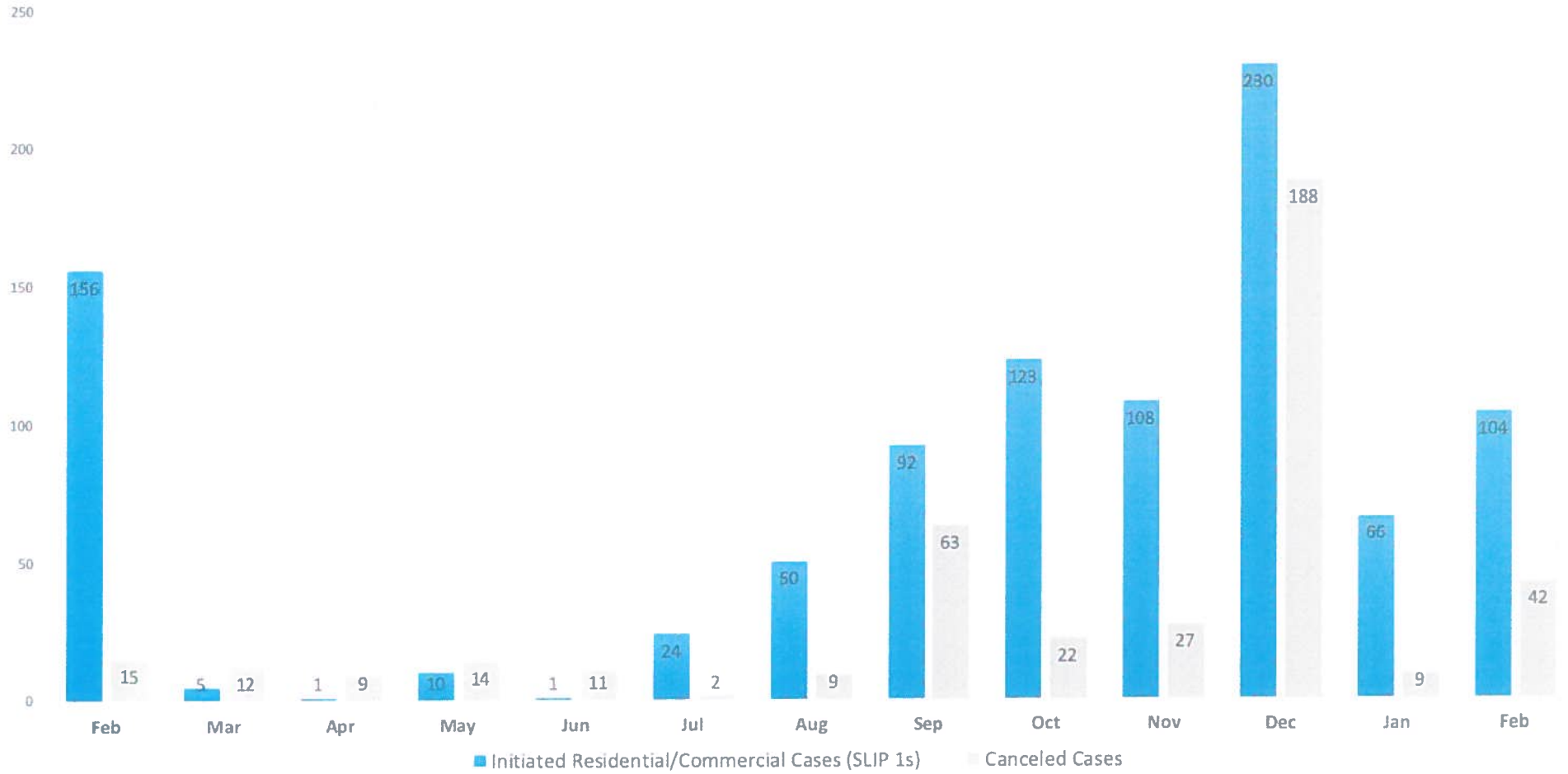


Recycled Production by Source of Supply

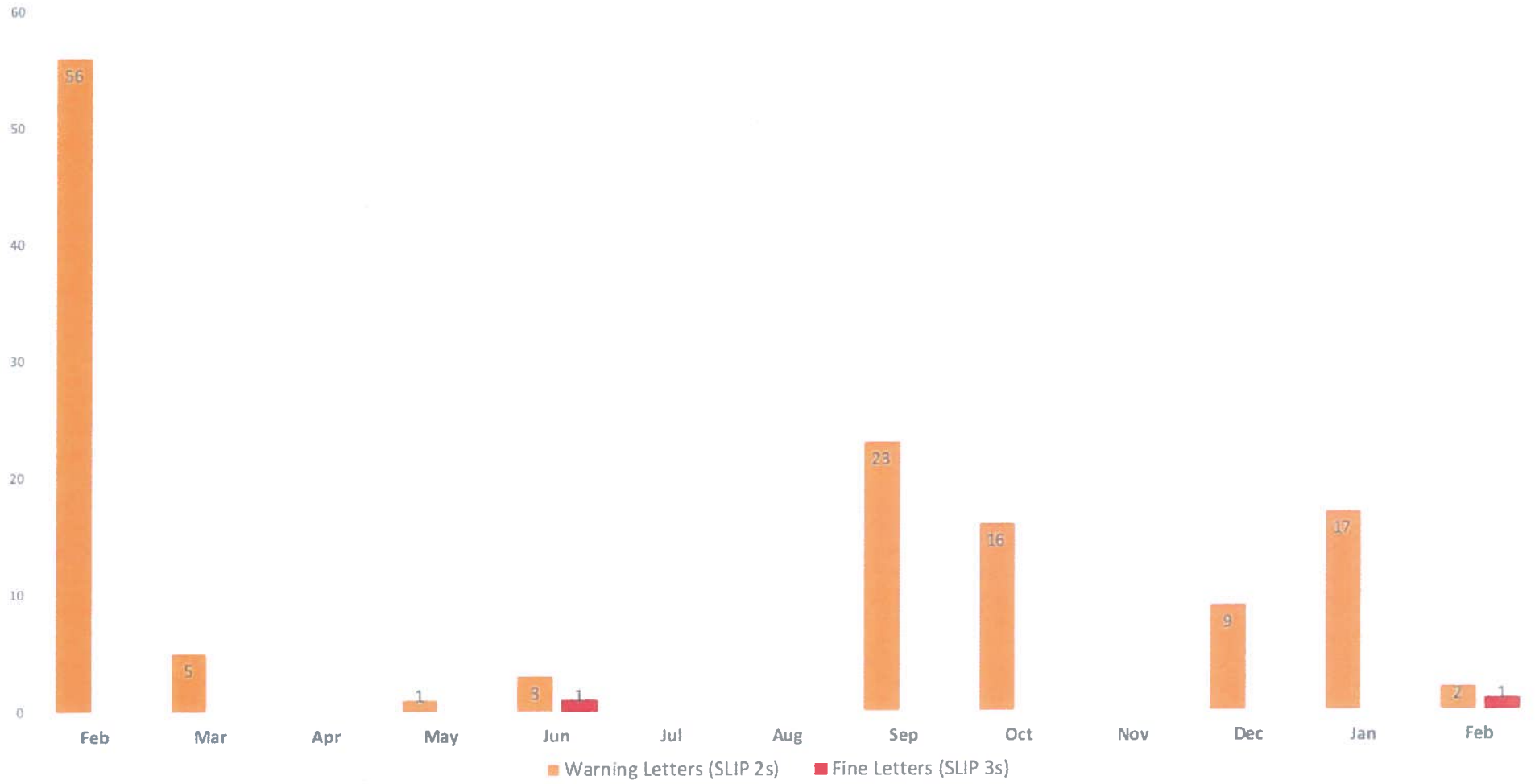


Note: 2018 blend water content includes 14 AF and 11 AF of non-potable groundwater in the months of July & August, respectively.

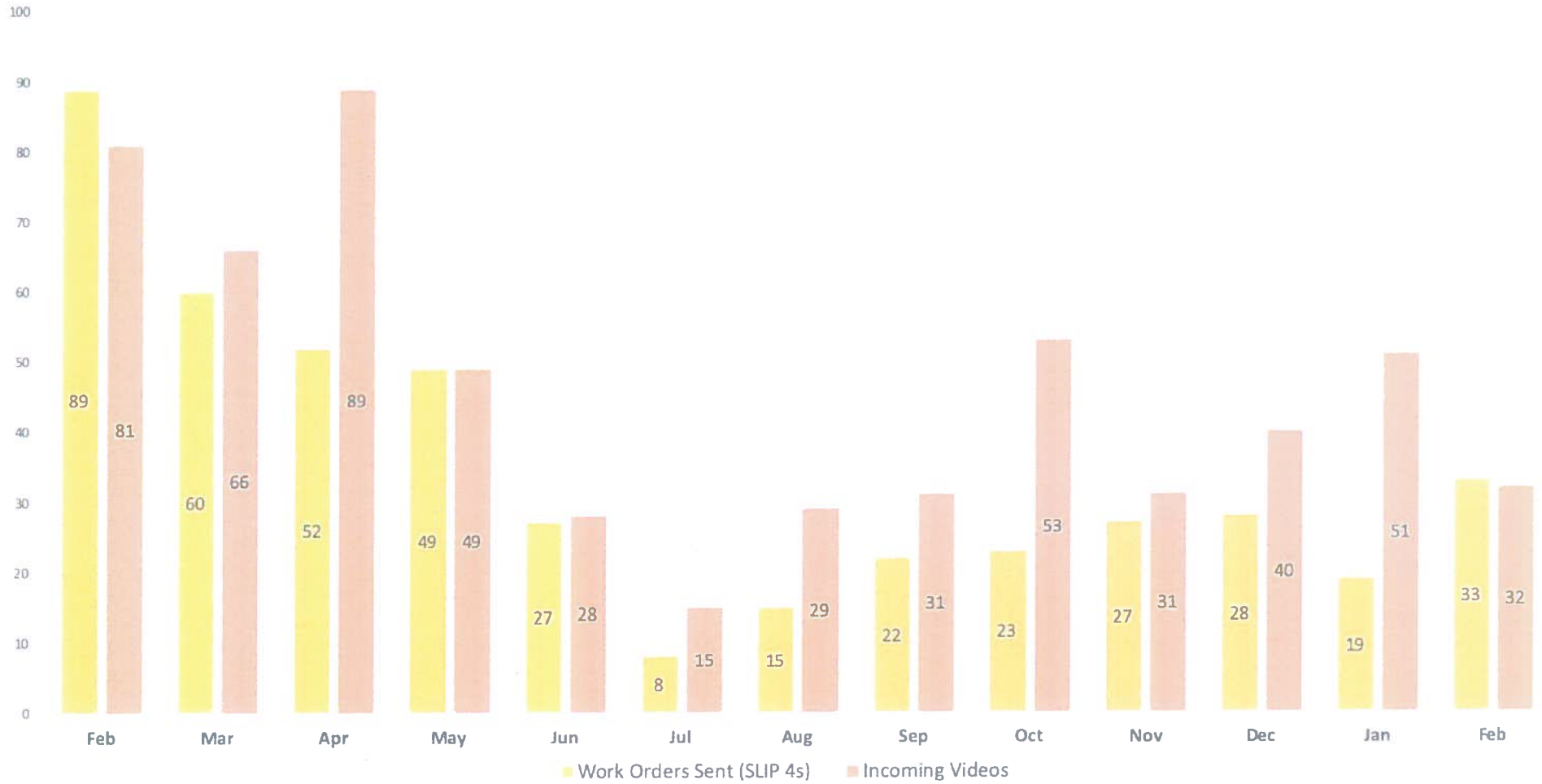
Initiated Residential/Commercial Cases (SLIP 1s) and Canceled Cases



Warning (SLIP 2s) and Fines (SLIP 3s) Letters Sent



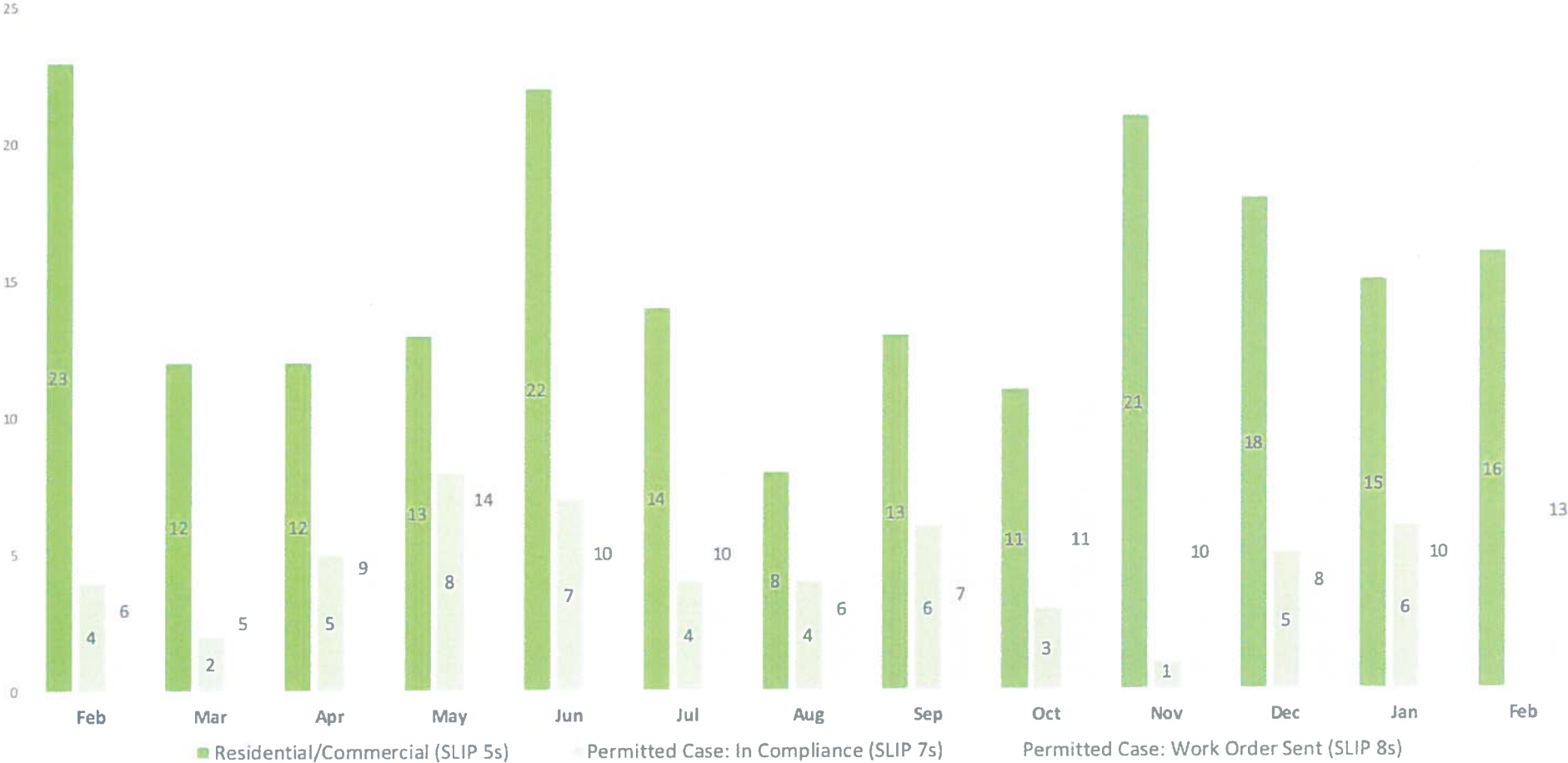
Work Orders Sent (SLIP 4s) and Incoming Videos



Completed Residential/Commercial Cases (SLIP 5s) and Completed Permitted Cases (SLIP 7s, SLIP 8s)



Completed Residential/Commercial Cases (SLIP 5s) and Completed Permitted Cases (SLIP 7s, SLIP 8s)



PLSDs (Private Lateral Sewer Discharge) and SSOs (Sanitary Sewer Overflow)

