

Planned & Actual Water Production By Source (Acre-Feet)

Report Month:

November

Water Year: 2020

	Cachuma Project			Gibraltar Reservoir		Devil's Canyon	Mission Tunnel		Groundwater Production					Desalination		State Water		Net Overlap Water	Groundwater Recharge		Blend Water		Potable System Total		Recycled System		El Estero Process Usage		Water System Total	
	Plan	Act.	Balance	Plan	Act.	Actual	Plan	Act.	Plan	SU #1	Foot-Hill Basin	Total Actual	SU#3 Actual	Plan	Act.	Plan	Act.	Act.	Injec.	Total Actual	Plan	Act.	Plan	Act.	Plan	Act.	Plan	Act.	Plan	Act.
2019 Oct	509	134	22,241	195	466	0	44	94	0	22	0	22	0	240	273	0	0	-8	0	0	3	12	985	969	84	85	15	28	1,084	1,082
Nov	347	122	22,048	195	376	0	44	94	0	0	0	0	0	240	246	0	0	-12	0	0	3	0	823	826	54	51	15	27	892	904
Dec	296			195			44		0					240		0					3		772		37		15		824	
2020 Jan	383			0			44		0					240		0					3		664		19		15		698	
Feb	645			0			44		0					0		0					3		686		20		15		721	
Mar	801			0			44		0					0		0					3		842		19		15		876	
Apr	875			0			44		0					0		0					3		916		48		15		979	
May	993			0			44		0					0		0					3		1,034		76		15		1,125	
Jun	740			0			44		0					240		0					3		1,021		98		15		1,134	
Jul	797			0			44		0					240		0					3		1,078		119		15		1,212	
Aug	853			0			44		0					240		0					3		1,134		113		15		1,262	
Sep	777			0			44		0					240		0					3		1,058		114		15		1,187	
Year to Date	509	255	22,241	195	842	0	44	187	0	22	0	22	0	240	519	0	0	-20	0	0	3	12	985	1,795	84	136	15	55	1,084	1,986
Annual Total	8,016			585			528		0					1,920		0					36		11,013		800		180		11,993	
Notes			*3										*6							*1	*5	*1	*2			*4				
A	B	C	D	E	F	G	H	I	J	K	L	M	N	O	P	Q	R	S	T	-U	V	-W	X	Y	Z	AA	AB	AC	AD	AE

- *1 Groundwater recharge & Blend Water not part of potable system use.
- *2 Based on 2013 potable system production of 13,765 AF with 20% conservation.
- *3 Cachuma Balance: Net of entitlement, carryover, spills, & transfers, per COMB
- *4 Effective 2011 WY, Net Production to Distribution System (Meter Distr. Flow - EEWTP process water).
- *5 Planned blend water assumes additional downtime for recycled system repairs.
- *6 Groundwater from Storage Unit #3 is non-potable water serving recycled water demands.

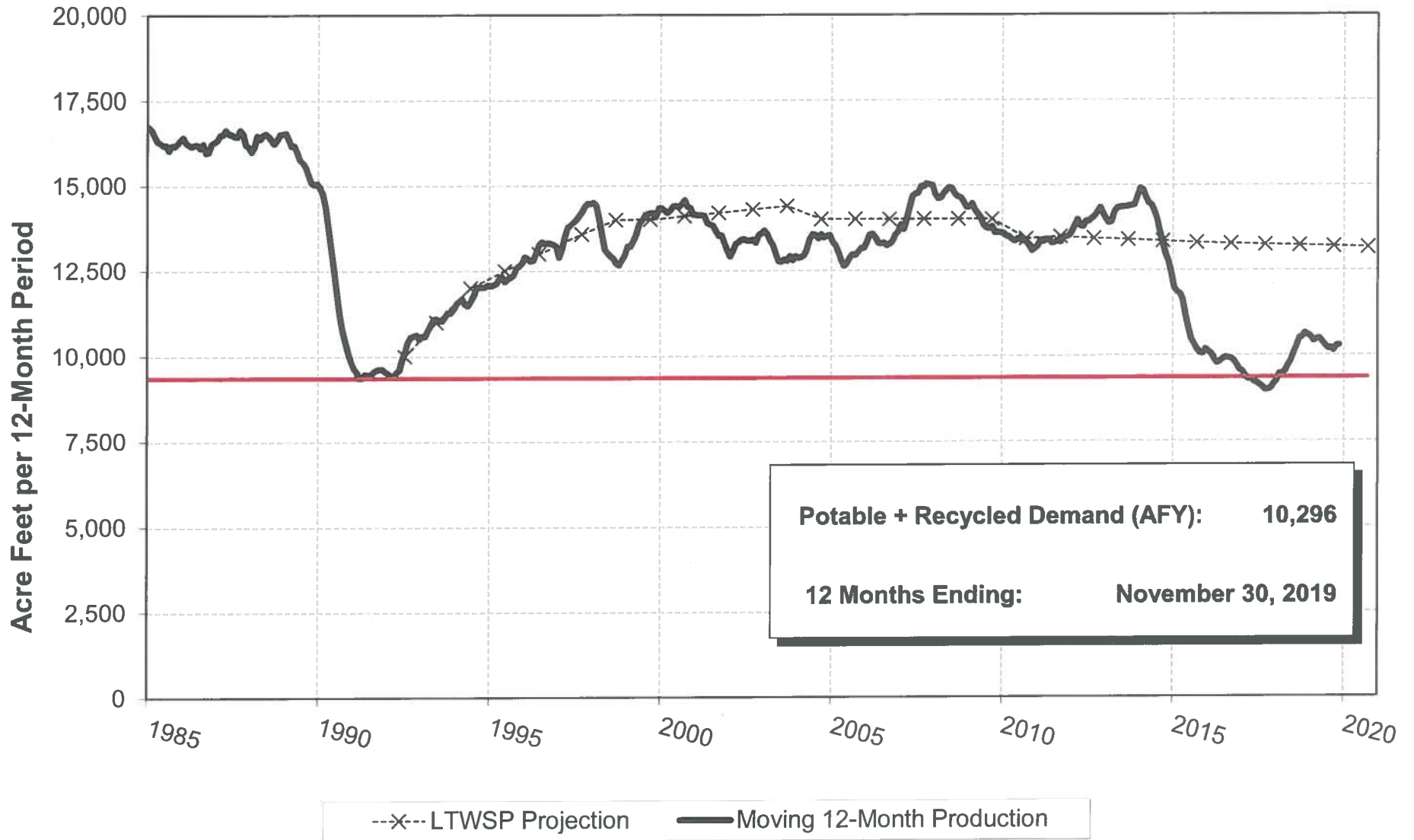
YTD Percent of Target:	182.2%	161.4%		183.2%
	Potable	Recycled		System

Potable System V = C+F+G+I+M+P+R+S-U-W

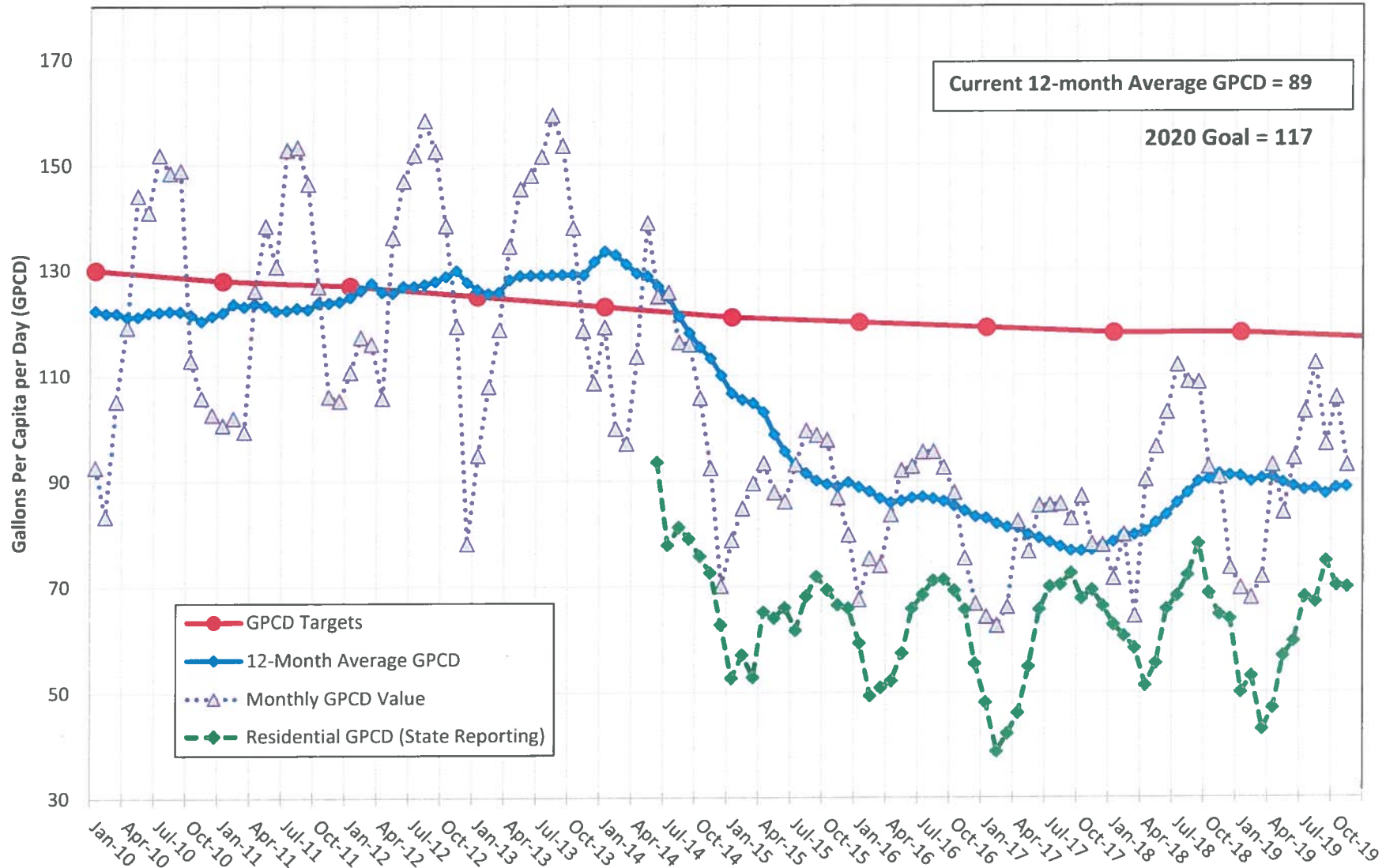
= Preliminary Data or Not Yet Available

City of Santa Barbara Water Demand

Moving 12-Month Production to Serve Potable + Recycled Systems



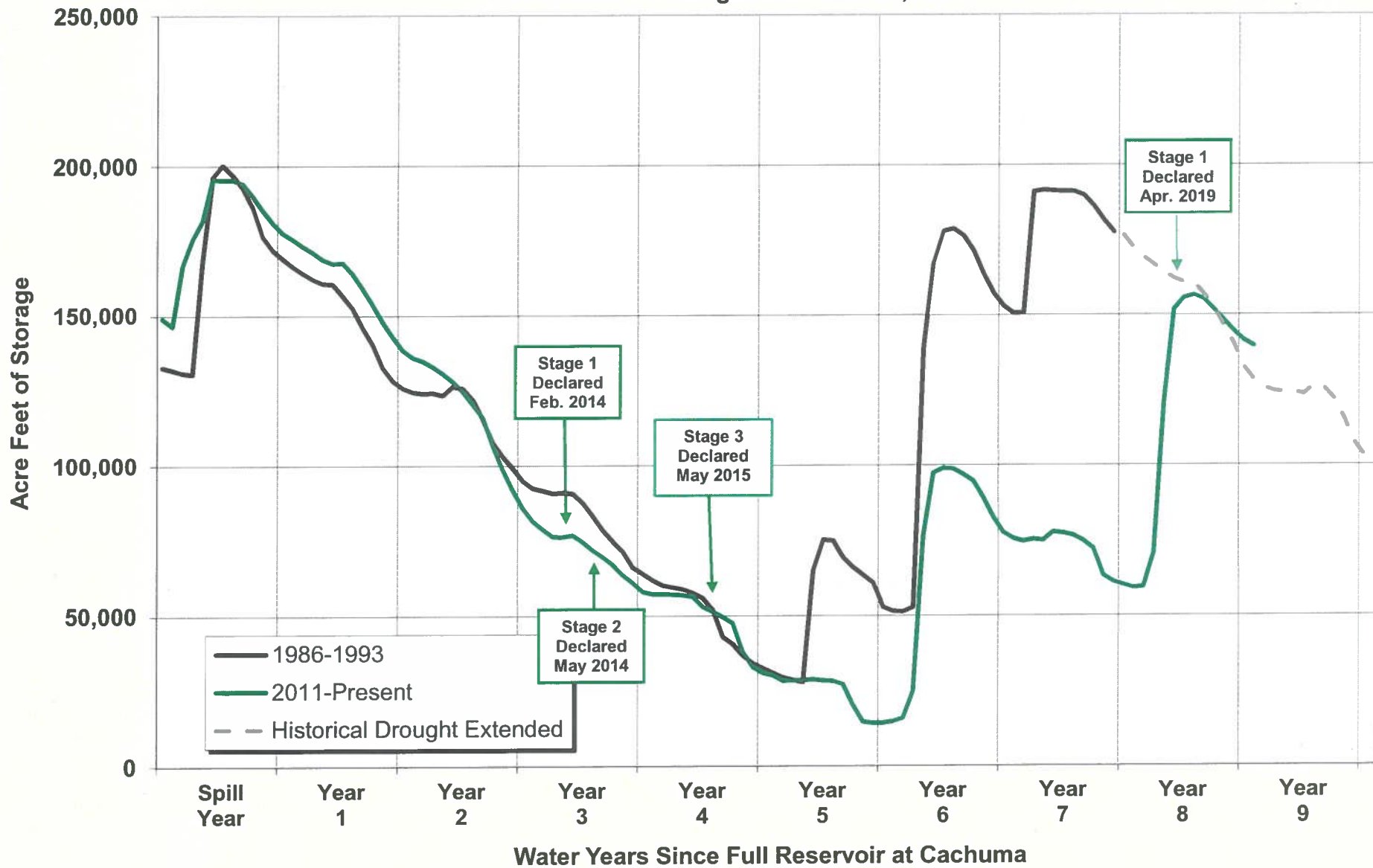
City of Santa Barbara Water Use in Gallons Per Capita per Day (GPCD) November 30, 2019



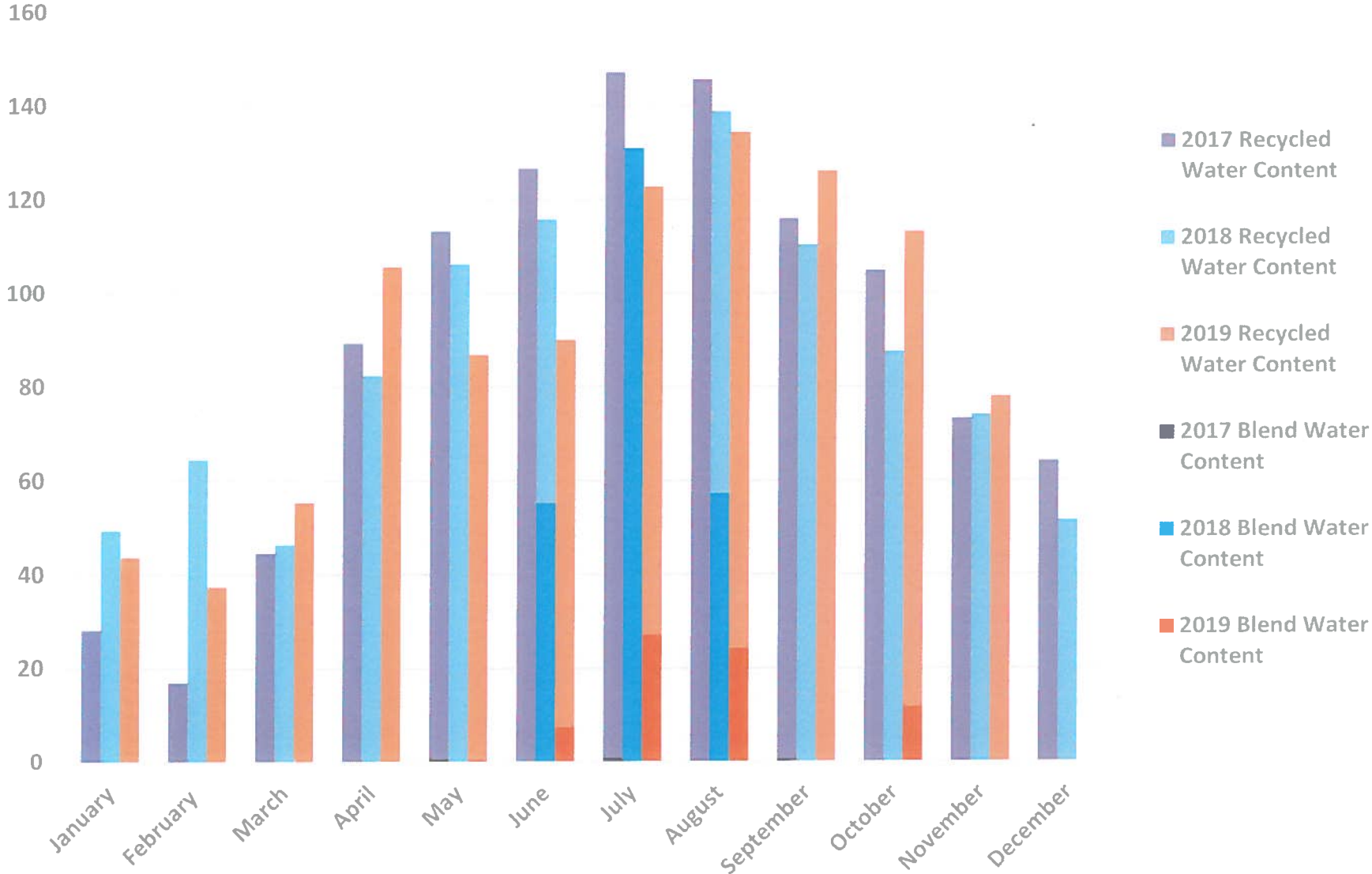
NOTE: The GPCD values above exclude blend water for recycled water production.

Cachuma Storage: Current Drought & 1986-93 Period

Data Shown Through November 30, 2019



Recycled Production by Source of Supply (Acre-Feet)



Note: 2018 blend water content includes 14 AF and 11 AF of non-potable groundwater in the months of July & August, respectively.

SLIP: Open 'In Progress' Cases*

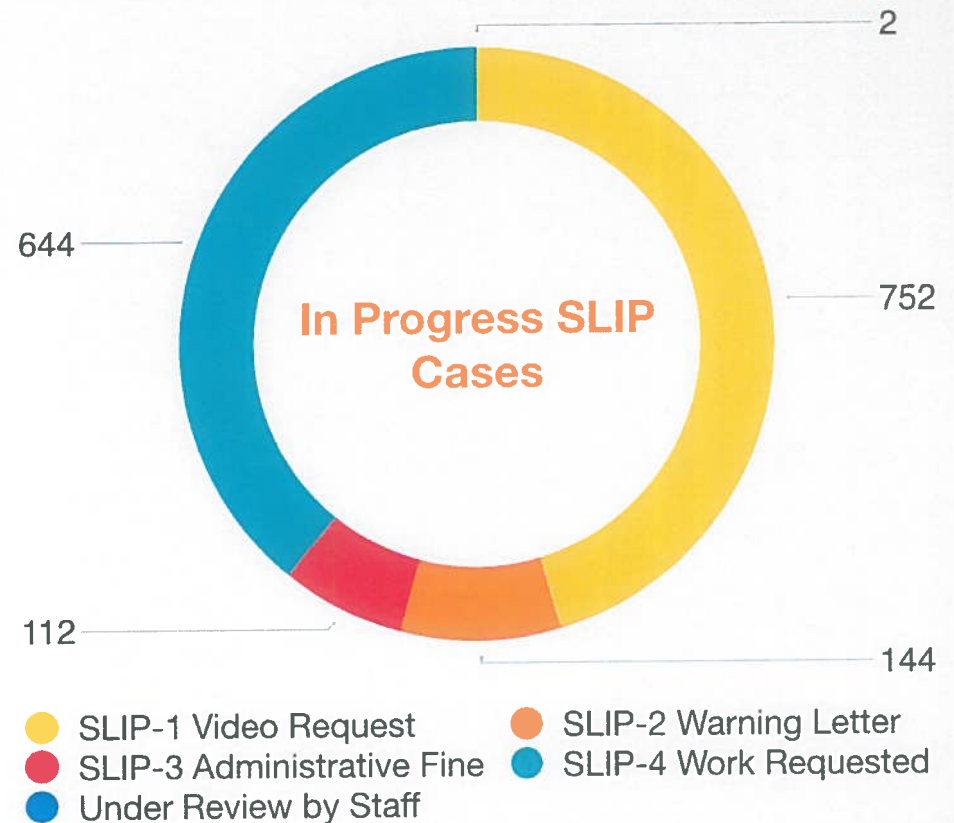
(as for December 13th, 2019)

*OMS Current Database: Since January 2018

Open 'In Progress' SLIP Cases

SLIP Stage	Quantity
SLIP-1 Video Request	752
SLIP-2 Warning Letter	144
SLIP-3 Administrative Fine	112
SLIP-4 Work Requested	644
Under Review by Staff ¹	2
Total Open 'In Progress' SLIP Cases	1,654

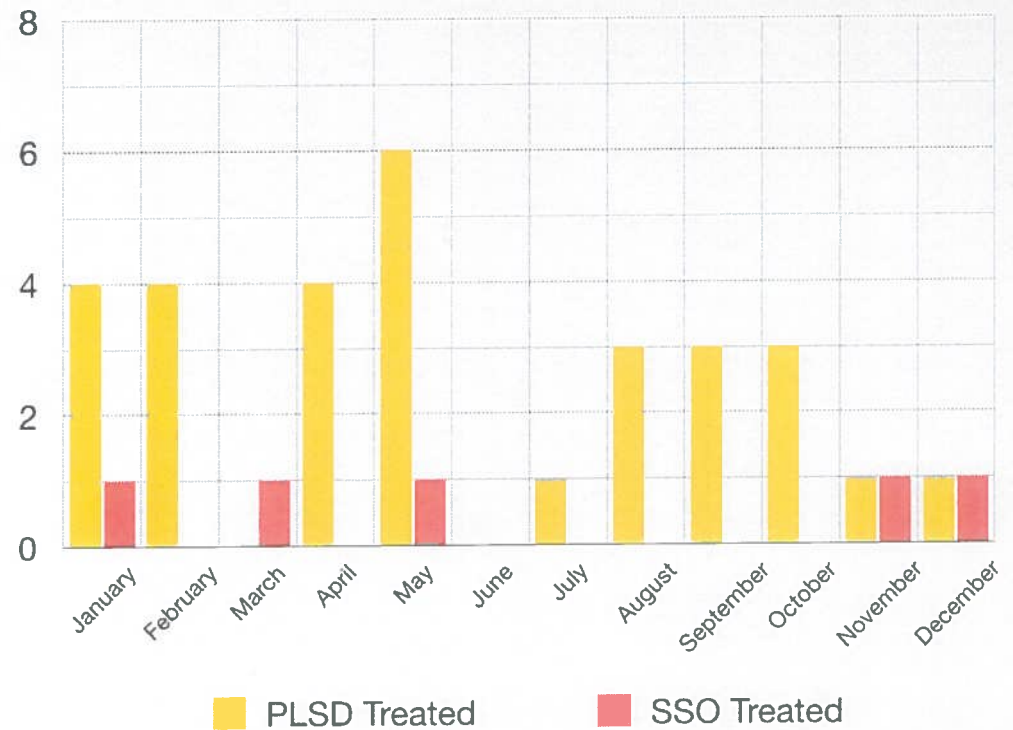
¹SLIP Cases under in-depth review by Wastewater Collection Systems Superintendent.



SLIP: PLSDs and SSOs in 2019

(as for December 13th, 2019)

PLSDs and SSOs in 2019		
Month	PLSD ¹ Treated	SSO ² Treated
January	4	1
February	4	0
March	0	1
April	4	0
May	6	1
June	0	0
July	1	0
August	3	0
September	3	0
October	3	0
November	1	1
December	1	1



¹PLSD: Private Lateral Sanitary Discharge

²SSO: Sewer Sanitary Overflow