

Planned & Actual Water Production By Source (Acre-Feet)
Water Year: 2020

Report Month:

October

	Cachuma Project			Gibraltar Reservoir		Devil's Canyon	Mission Tunnel		Groundwater Production				Desalination		State Water		Net Overlap Water	Groundwater Recharge		Blend Water		Potable System Total		Recycled System		El Estero Process Usage		Water System Total		
	Plan	Act.	Balance	Plan	Act.	Actual	Plan	Act.	Plan	SU #1	Foot-hill Basin	Total Actual	SU#3 Actual	Plan	Act.	Plan	Act.	Act.	Injec.	Total Actual	Plan	Act.	Plan	Act.	Plan	Act.	Plan	Act.	Plan	Act.
2019 Oct	524	134	22,241	195	466	0	44	94	0	22	0	22	0	240	273	0	0	-8	0	0	3	12	985	969	84	85	15	28	1,084	1,082
Nov	362			195			44		0					240		0					3		823		54		15		892	
Dec	311			195			44		0					240		0					3		772		37		15		824	
2020 Jan	398			0			44		0					240		0					3		664		19		15		698	
Feb	660			0			44		0					0		0					3		686		20		15		720	
Mar	816			0			44		0					0		0					3		842		19		15		876	
Apr	890			0			44		0					0		0					3		916		48		15		979	
May	1,008			0			44		0					0		0					3		1,034		76		15		1,124	
Jun	755			0			44		0					240		0					3		1,021		98		15		1,134	
Jul	812			0			44		0					240		0					3		1,078		119		15		1,212	
Aug	868			0			44		0					240		0					3		1,134		113		15		1,262	
Sep	792			0			44		0					240		0					3		1,058		114		15		1,186	
Year to Date	524	134	22,241	195	466	0	44	94	0	22	0	22	0	240	273	0	0	-8	0	0	3	12	985	969	84	85	15	28	1,084	1,082
Annual Total	8,196			585			528		0					1,920		0					36		11,012		800		180		11,992	
Notes			*3										*6							*1	*5	*1	*2			*4				

- *1 Groundwater recharge & Blend Water not part of potable system use.
- *2 Based on 2013 potable system production of 13,765 AF with 20% conservation.
- *3 Cachuma Balance: Net of entitlement, carryover, spills, & transfers, per COMB
- *4 Effective 2011 WY, Net Production to Distribution System (Meter Distr. Flow - EEWTP process water).
- *5 Planned blend water assumes additional downtime for recycled system repairs.
- *6 Groundwater from Storage Unit #3 is non-potable water serving recycled water demands.

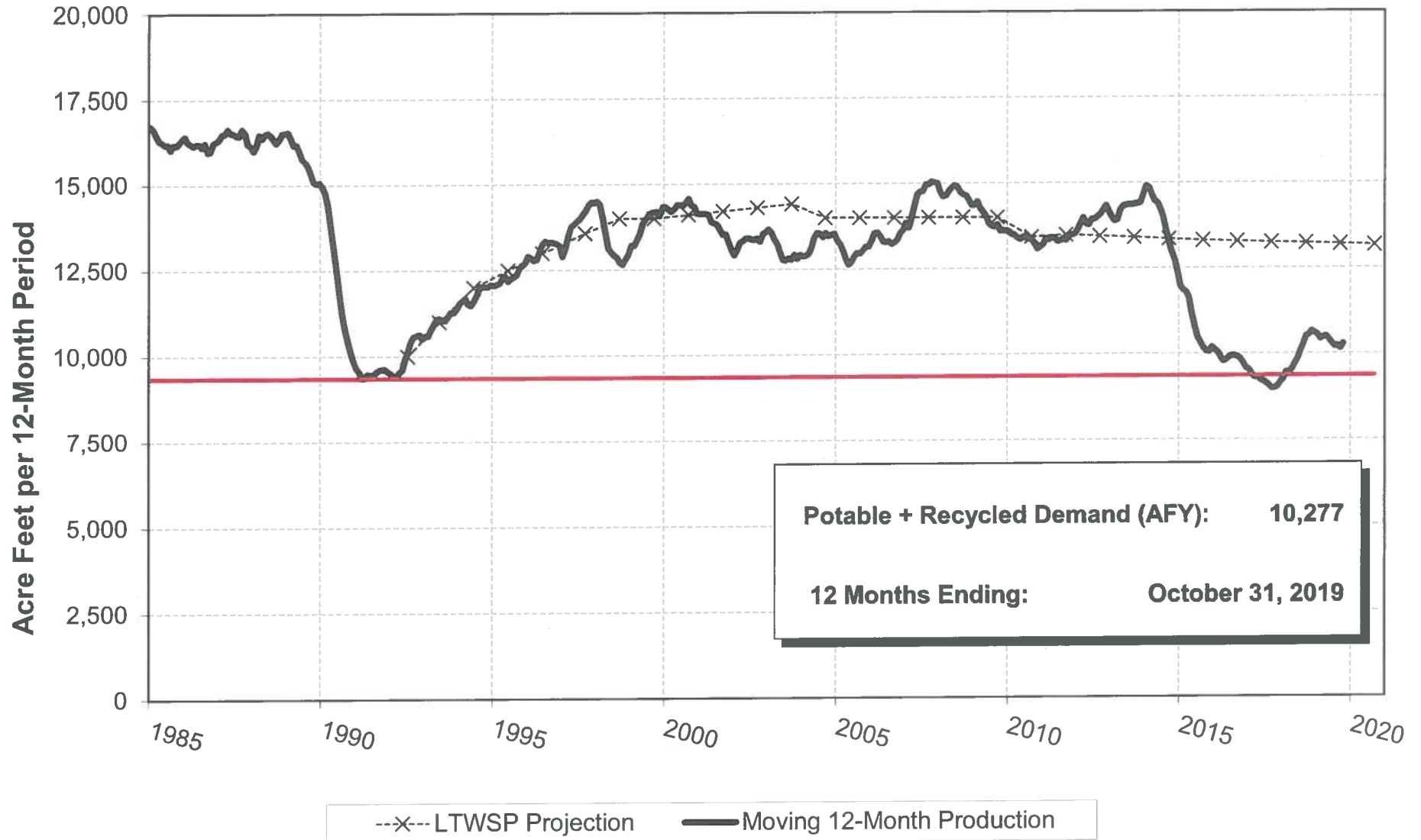
YTD Percent of Target:	98.4%	101.3%			99.8%
	Potable	Recycled			System

Potable System V = C+F+G+I+M+P+R+S-U-W

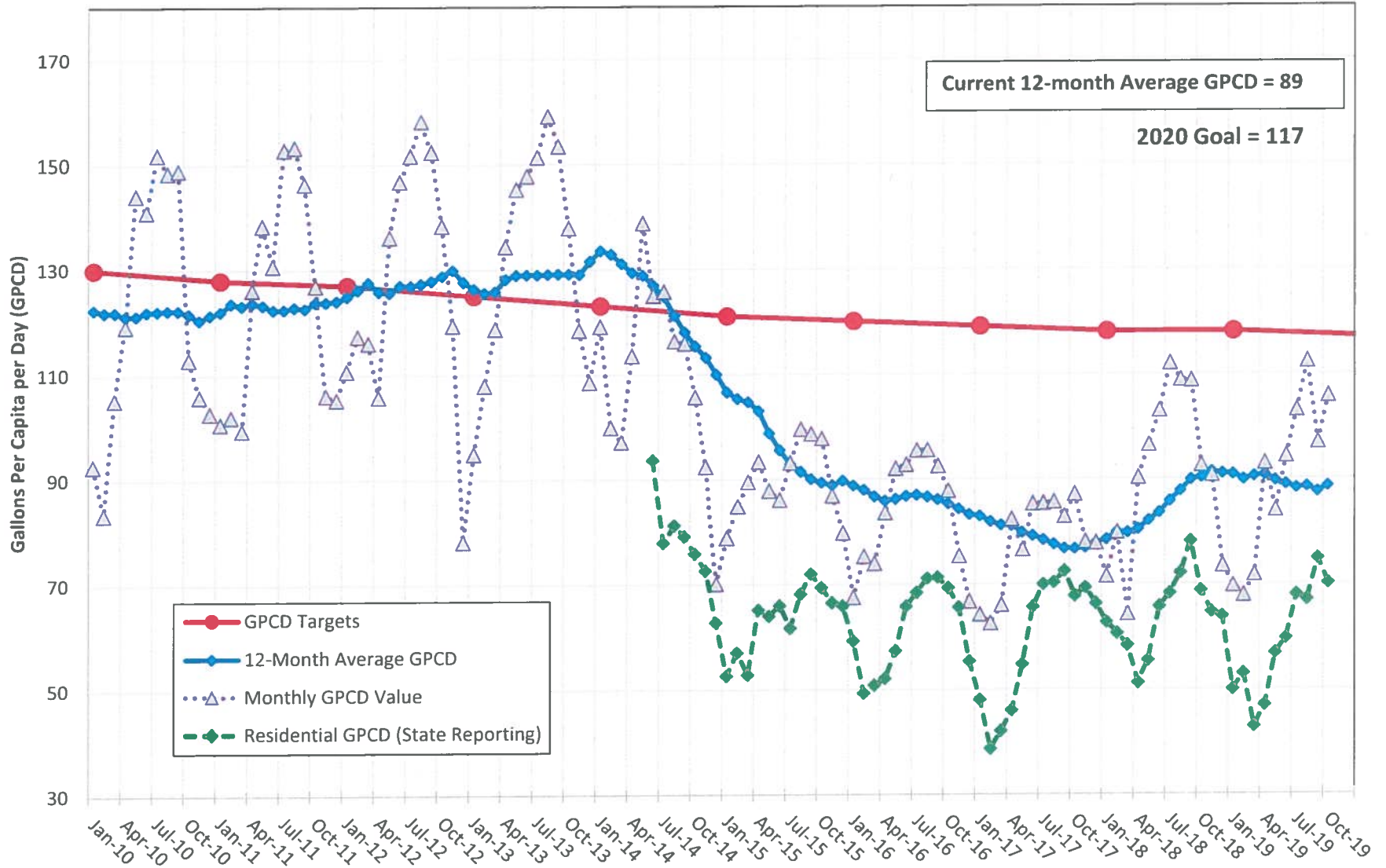
= Preliminary Data or Not Yet Available

City of Santa Barbara Water Demand

Moving 12-Month Production to Serve Potable + Recycled Systems



City of Santa Barbara Water Use in Gallons Per Capita per Day (GPCD) October 31, 2019



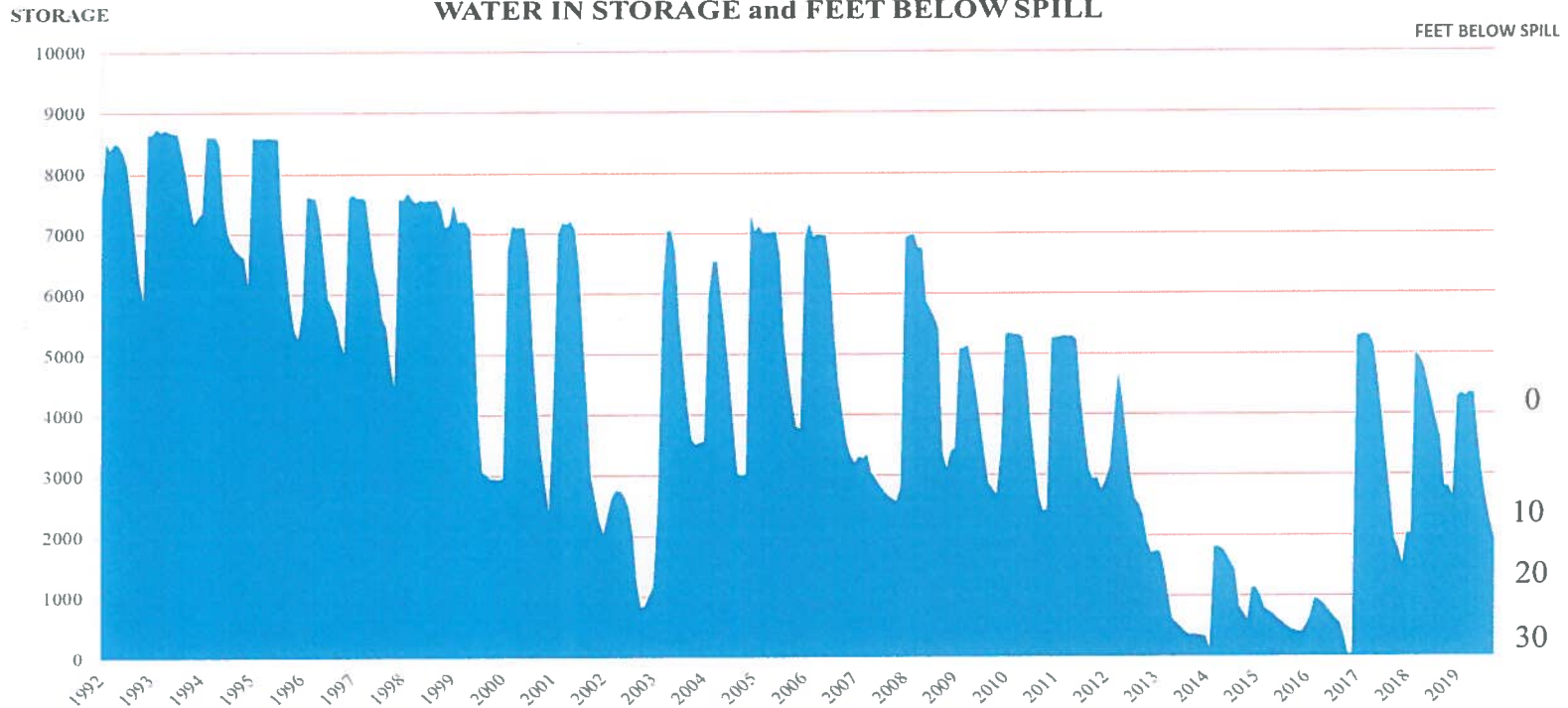
NOTE: The GPCD values above exclude blend water for recycled water production.

14-Nov-19 **GIBRALTAR RAINFALL DATA**

Gauge Location: Gibraltar Dam

Year	Oct	Nov	Dec	Jan	Feb	Mar	Apr	May	June	July	Aug	Sept	Total
1969-70	0.00	2.59	0.31	4.34	3.57	6.58	0.00	0.00	0.00	0.00	0.00	0.00	17.39
1970-71	0.08	9.38	8.87	1.10	1.64	0.00	0.94	0.47	0.00	0.00	0.00	0.00	22.48
1971-72	0.47	1.09	13.20	0.19	0.32	0.00	0.24	0.11	0.00	0.00	0.00	0.00	15.62
1972-73	0.55	9.10	1.06	8.38	14.89	4.27	0.00	0.00	0.00	0.00	0.00	0.00	38.25
1973-74	0.70	3.19	2.83	12.26	0.05	5.35	0.85	0.02	0.00	0.00	0.00	0.00	25.25
1974-75	0.89	0.06	9.53	0.35	5.62	8.96	2.13	0.08	0.00	0.00	0.01	0.00	27.63
1975-76	0.40	0.44	0.22	0.00	10.93	2.02	1.08	0.00	0.00	0.00	0.05	4.28	19.42
1976-77	0.25	0.44	0.83	5.42	0.26	2.89	0.00	5.19	0.00	0.00	0.38	0.00	15.66
1977-78	0.00	0.14	9.23	1.91	14.42	18.28	4.27	0.00	0.00	0.00	0.00	1.63	49.88
1978-79	0.00	2.76	2.51	8.49	6.08	7.26	0.00	0.00	0.00	0.00	0.00	1.01	28.11
1979-80	0.58	0.96	2.02	8.13	17.69	4.39	1.10	0.24	0.00	0.00	0.00	0.00	35.11
1980-81	0.00	0.00	1.74	6.17	2.99	9.98	1.05	0.00	0.00	0.00	0.00	0.00	21.93
1981-82	0.38	2.57	0.47	6.14	0.65	7.55	5.30	0.05	0.00	0.00	0.00	1.70	24.81
1982-83	1.30	7.87	5.61	15.07	8.47	15.11	8.86	0.00	0.00	0.00	0.79	0.59	63.67
1983-84	5.57	4.18	6.75	0.25	0.08	0.95	0.24	0.00	0.00	0.00	0.07	0.28	18.37
1984-85	0.49	3.52	7.94	0.96	1.24	1.92	0.13	0.00	0.00	0.00	0.00	0.05	16.25
1985-86	0.42	7.14	1.11	3.24	10.61	6.77	1.51	0.00	0.00	0.00	0.00	0.84	31.64
1986-87	0.00	0.96	0.42	2.71	2.04	4.58	0.00	0.00	0.00	0.00	0.00	0.00	10.71
1987-88	1.60	1.52	4.67	5.19	4.12	2.60	5.14	0.06	0.05	0.00	0.00	0.00	24.95
1988-89	0.00	1.04	5.73	0.29	5.38	1.43	0.13	0.46	0.00	0.00	0.00	0.25	14.71
1989-90	0.79	0.58	0.00	5.61	3.33	0.27	0.24	0.78	0.00	0.00	0.00	0.20	11.80
1990-91	0.00	0.26	0.18	1.71	4.88	23.12	0.03	0.00	0.06	0.38	0.00	0.00	30.62
1991-92	0.33	0.13	7.54	4.72	18.82	7.28	0.04	0.16	0.00	0.07	0.00	0.00	39.09
1992-93	1.78	0.00	8.17	14.30	16.43	8.12	0.00	0.34	0.47	0.00	0.00	0.00	49.61
1993-94	0.19	1.51	2.42	1.74	9.76	2.72	0.65	0.51	0.00	0.00	0.00	0.09	19.59
1994-95	2.19	1.29	1.54	33.26	3.39	15.30	0.33	1.64	0.02	0.00	0.00	0.00	58.96
1995-96	0.00	0.18	2.85	2.93	10.30	2.21	1.00	0.39	0.00	0.00	0.00	0.00	19.86
1996-97	7.05	1.89	7.81	7.45	0.13	0.00	0.00	0.00	0.00	0.04	0.00	0.09	24.46
1997-98	0.00	5.48	10.17	6.64	34.63	4.47	4.43	6.62	0.03	0.00	0.00	0.55	73.02
1998-99	0.13	1.30	0.79	4.25	2.24	4.55	2.97	0.00	0.13	0.24	0.00	0.03	16.63
1999-00	0.00	1.65	0.00	2.25	16.70	3.73	5.36	0.03	0.19	0.00	0.00	0.00	29.91
2000-01	4.04	0.00	0.15	11.24	8.85	13.59	2.96	0.01	0.00	0.01	0.00	0.00	40.85
2001-02	0.65	4.48	2.89	1.03	0.33	0.84	0.08	0.09	0.00	0.00	0.00	0.06	10.45
2002-03	0.00	4.61	6.45	0.12	5.26	4.43	4.97	2.82	0.00	0.06	0.00	0.00	28.72
2003-04	0.00	2.29	3.10	0.42	8.50	0.43	0.00	0.00	0.00	0.00	0.00	0.00	14.74
2004-05	8.39	0.46	17.37	21.54	15.65	3.58	1.14	1.46	0.00	0.00	0.00	0.14	69.73
2005-06	0.60	1.43	0.68	9.67	5.41	5.22	8.15	1.29	0.00	0.00	0.10	0.00	32.55
2006-07	0.37	0.23	1.63	2.62	3.40	0.16	0.81	0.00	0.00	0.00	0.02	0.85	10.09
2007-08	0.38	0.10	4.09	23.84	3.11	0.00	0.15	0.27	0.00	0.00	0.10	0.00	32.04
2008-09	0.06	2.22	4.07	1.00	7.95	0.90	0.35	0.01	0.09	0.00	0.00	0.00	16.65
2009-10	5.81	0.00	5.19	11.89	6.90	0.69	4.44	0.08	0.00	0.00	0.00	0.00	35.00
2010-11	2.03	2.04	14.04	2.06	5.12	14.95	0.00	1.18	0.51	0.00	0.00	0.00	41.93
2011-12	0.74	3.00	0.36	1.22	0.47	5.89	3.08	0.00	0.00	0.00	0.00	0.04	14.80
2012-13	0.34	2.60	2.68	1.39	0.24	1.02	0.00	0.61	0.00	0.00	0.00	0.00	8.88
2013-14	0.08	1.21	0.29	0.00	5.07	5.16	0.66	0.57	0.00	0.00	0.00	0.00	13.04
2014-15	0.00	1.21	7.88	0.87	0.73	0.60	0.36	0.62	0.98	0.00	0.00	0.16	13.41
2015-16	0.23	0.36	0.71	4.66	2.66	4.22	0.27	0.13	0.00	0.00	0.00	0.00	13.24
2016-17	1.20	1.26	3.10	11.51	14.23	1.24	0.21	0.45	0.00	0.00	0.02	0.23	33.45
2017-18	0.00	0.07	0.00	3.92	0.28	7.13	0.13	0.30	0.00	0.00	0.00	0.00	11.83
2018-19	0.18	4.82	0.94	11.65	11.79	4.97	0.12	1.91	0.00	0.00	0.00	0.00	36.38
2019-20	0.00												
	Oct	Nov	Dec	Jan	Feb	Mar	Apr	May	June	July	Aug	Sept	Total
50 yr avg	1.02	2.11	4.04	5.92	6.75	5.15	1.52	0.58	0.05	0.02	0.03	0.26	27.90
50 yr median	0.38	1.30	2.76	4.09	5.10	4.33	0.36	0.09	0.00	0.00	0.00	0.00	24.64
Average YTD:	1.02												
Actual YTD:	0.00												

GIBRALTAR RESERVOIR HYDROGRAPH WATER IN STORAGE and FEET BELOW SPILL



ELEV.	STATUS	CAPACITY (AF)
1,400.00	Reservoir is Full	5,246
1,376.48	First 16" Intake Valve	1,156
1,361.82	Second 16" Intake Valve	0
1,300.00	Reservoir is Empty	0

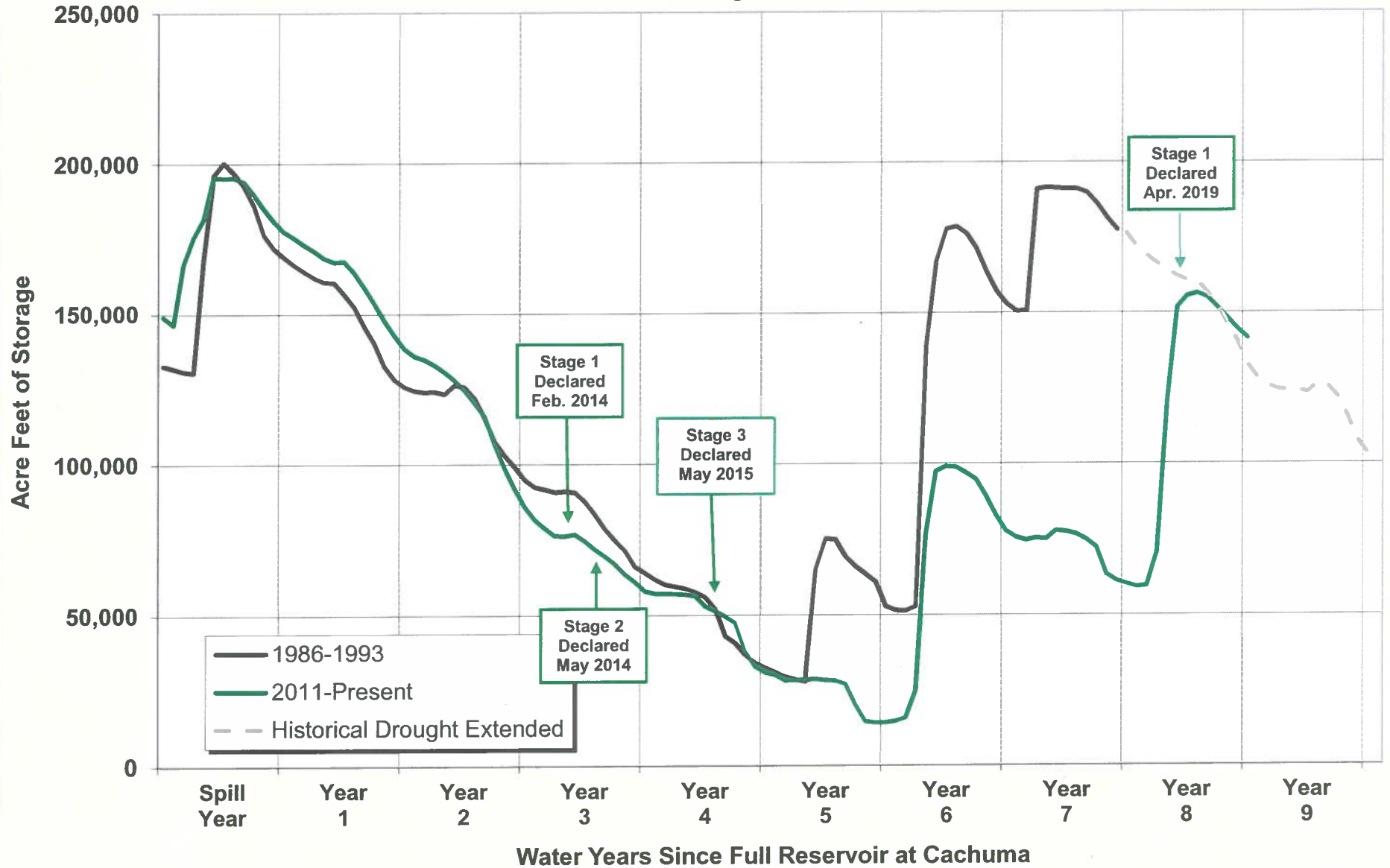
January 1993 - February 1996... Reflects use of M,N&S 1992 Gib. Area/Capacity Survey @ 8,618 AF
 February 1996 - October 1998... Reflects use of M,N&S 1996 Gib. Area/Capacity Survey @ 7,631 AF
 October 1998 - December 2001...Reflects use of M,N&S 1998 Gib. Area/Capacity Survey @ 7,261 AF
 January 2002 - December 2004...Reflects use of M,N&S 2001 Gib. Area/Capacity Survey @ 7,096 AF
 January 2005 - November 2007...Reflects use of M,N&S 2004 Gib. Area/Capacity Survey @ 7,085 AF
 December 2007-July 2008...Reflects use of M,N&S 2007 Gib. Area/Capacity Survey @ 6,784 AF
 August 2008 - May 2010...Reflects use of MN&S 2008 Gib. Area/Capacity Survey @ 5,303 AF
 June 2010 - September 2013...Reflects use of MN&S 2010 Gib. Area/Capacity Survey @ 5,251 AF
 October 2013 - September 2016...Reflects use of MN&S 2013 Gib. Area/Capacity Survey @ 5,246 AF
 October 2016 to September 2017...Reflects use of MNS 2016 Gib. Area/Capacity Survey @ 5,272 AF
 October 2017 to September 2018...Reflects use of MNS 2017 Gib. Area/Capacity Survey @ 4,968 AF
 October 2018 to September 2019...Reflects use of MNS 2018 Gib. Area/Capacity Survey @ 4,314 AF
 October 2019 to present...Reflects use of MNS 2019 Gib. Area/Capacity Survey @ 4,583 AF

TIME & DATE OF SPILL SINCE 1989

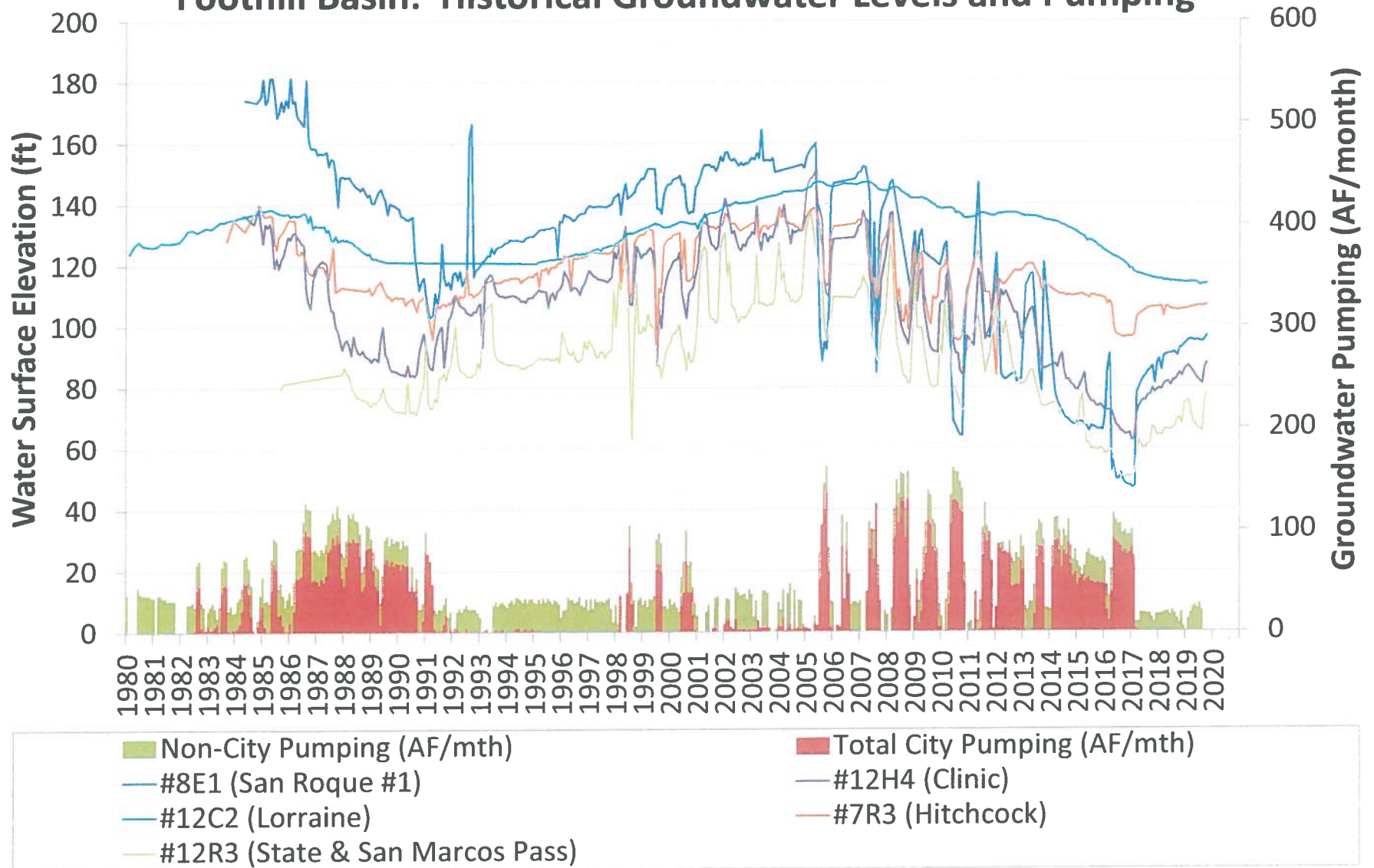
4:30 Am	March 19, 1991
9:09 Am	February 7, 1992
10:30 Am	January 7, 1993
6:45 Am	February 18, 1994
1:37 Pm	January 9, 1995
2:10 Pm	February 20, 1996
6:00 Am	December 22, 1996
3:00 Am	January 2, 1997
1:30 Pm	January 15, 1997
9:40 Am	December 6, 1997
4:30 Pm	February 6, 1999
8:00 Am	February 24, 2000
1:00 Am	February 15, 2001
1:30 Pm	April 14, 2003
5:00 Pm	December 29, 2004
8:30 Pm	January 2, 2006
1:00 Am	January 5, 2008
7:00 Pm	February 16, 2009
12:00 Noon	January 20, 2010
07:00 Am	December 20, 2010
01:00 Am	January 24, 2017
07:30 Am	March 29, 2018
09:30 Am	January 17, 2019

Cachuma Storage: Current Drought & 1986-93 Period

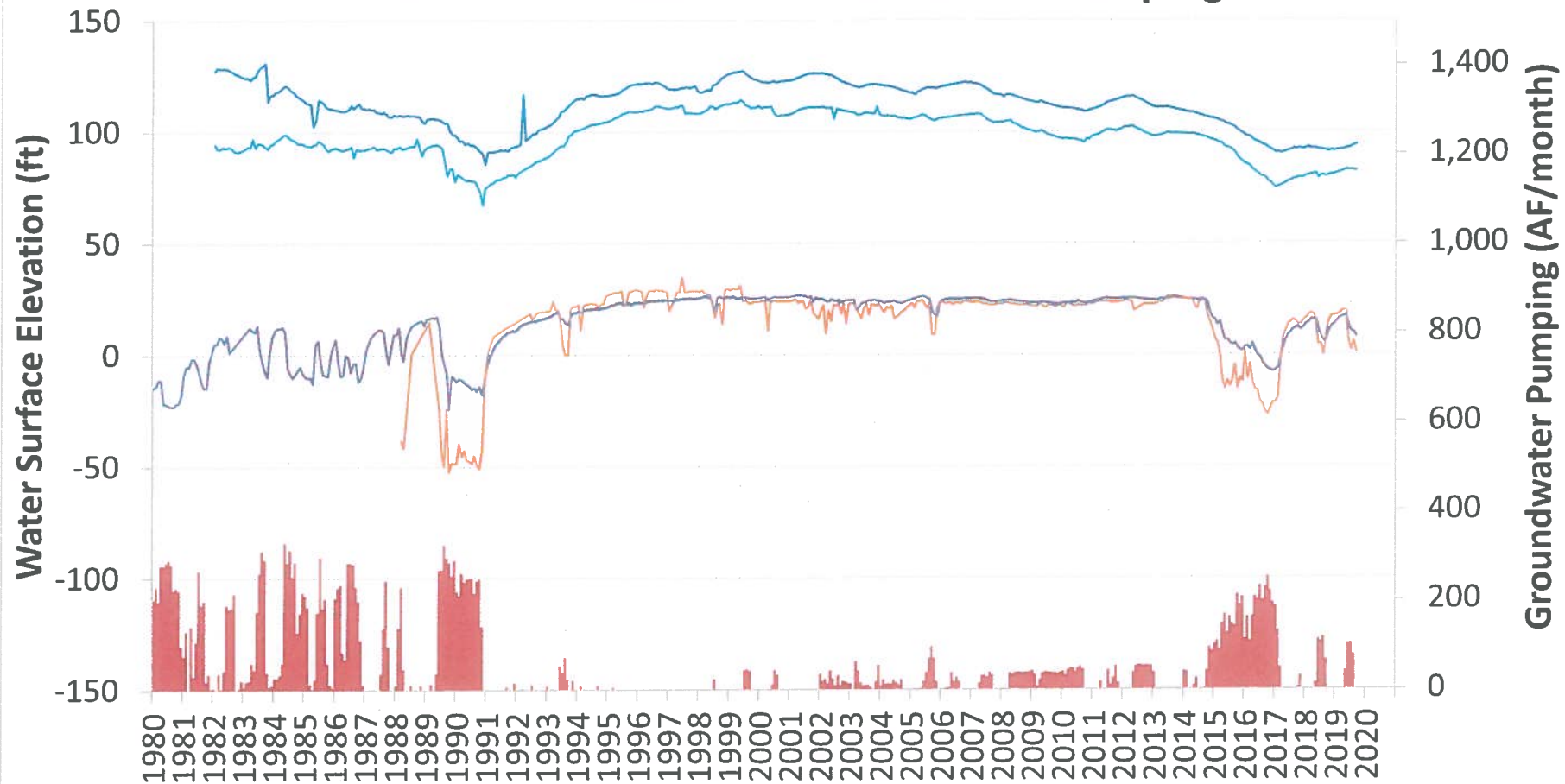
Data Shown Through October 31, 2019



Foothill Basin: Historical Groundwater Levels and Pumping



Storage Unit #1, Upper Producing Zone: Historical Groundwater Levels and Pumping



■ Total City Pumping (AF/mth)

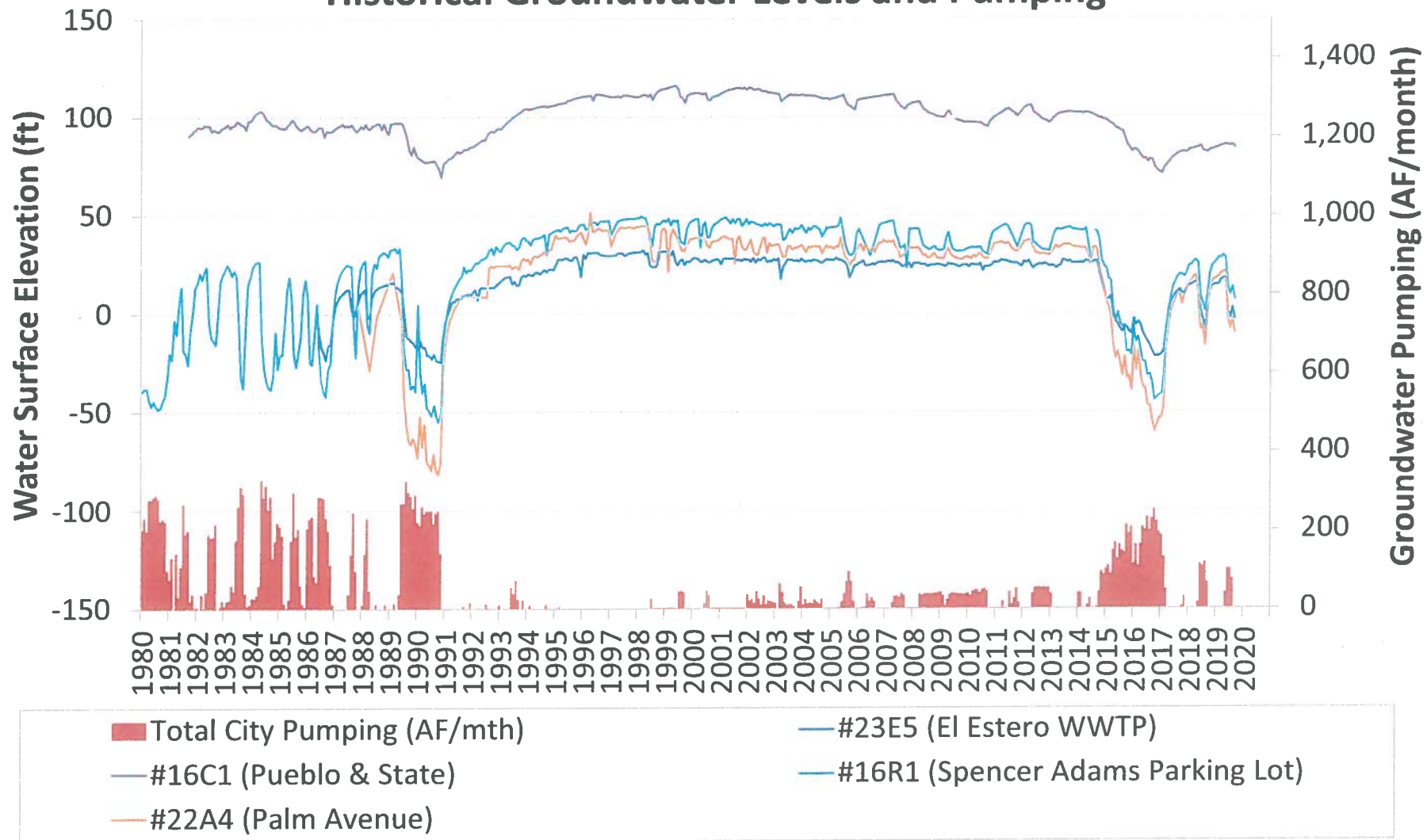
— #8R2 (Alamar & State)

— #14K2 (East Branch Library)

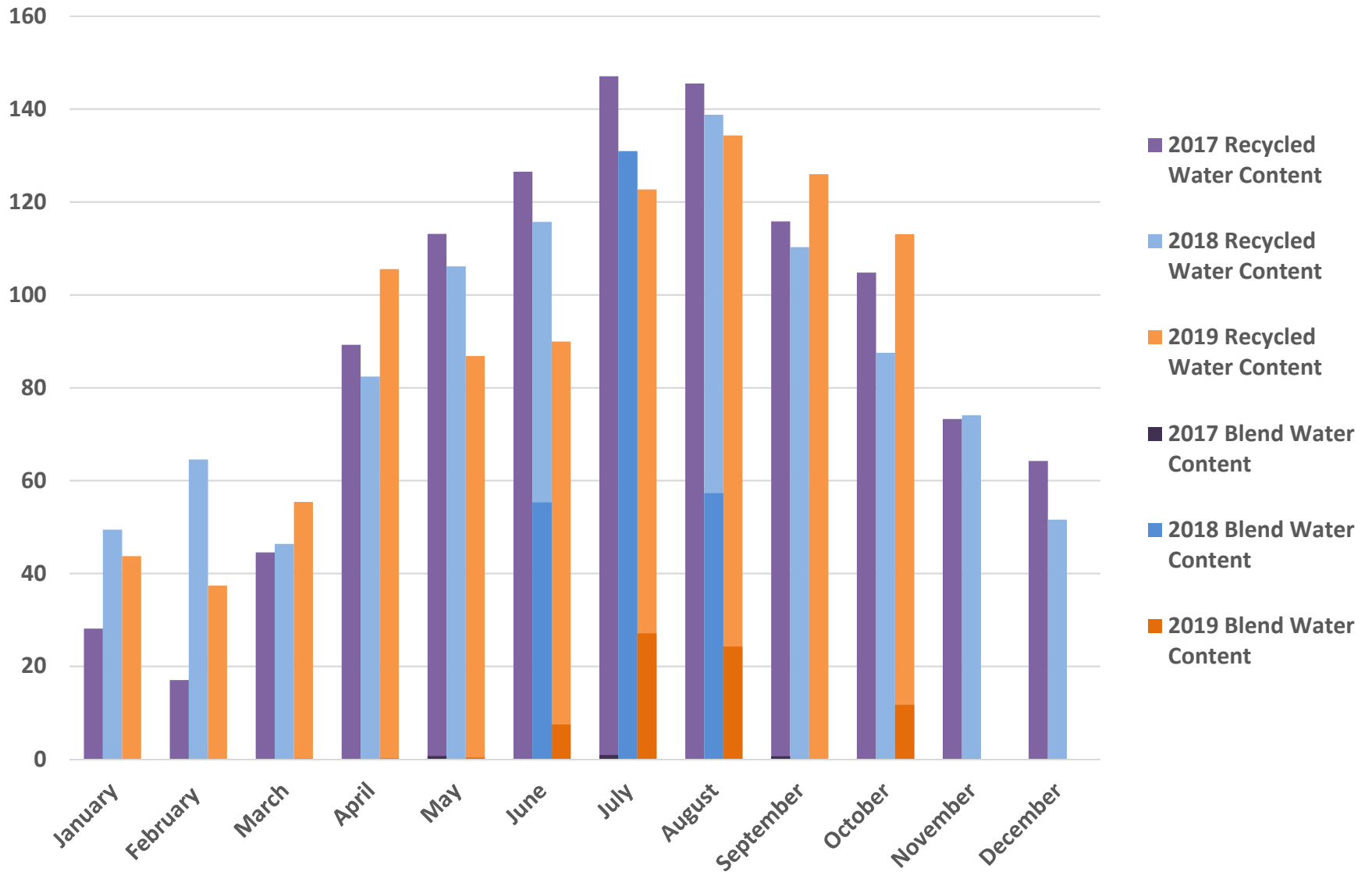
— #16C2 (Pueblo & State)

— #22A2 (Palm Ave.)

Storage Unit #1, Lower Producing Zone: Historical Groundwater Levels and Pumping



Recycled Production by Source of Supply (Acre-Feet)



Note: 2018 blend water content includes 14 AF and 11 AF of non-potable groundwater in the months of July & August, respectively.