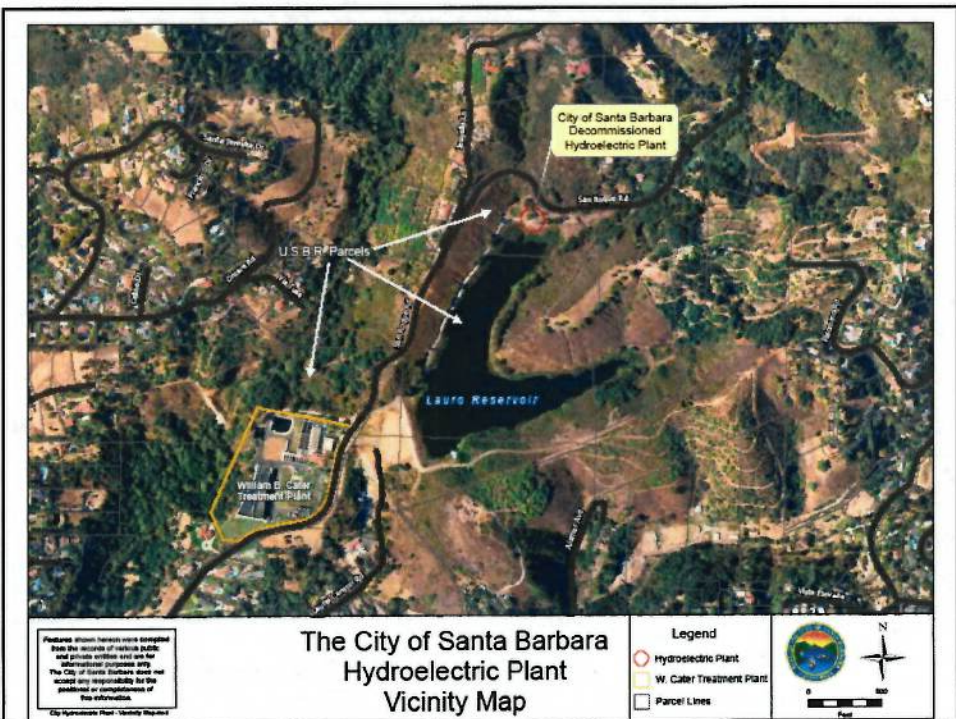
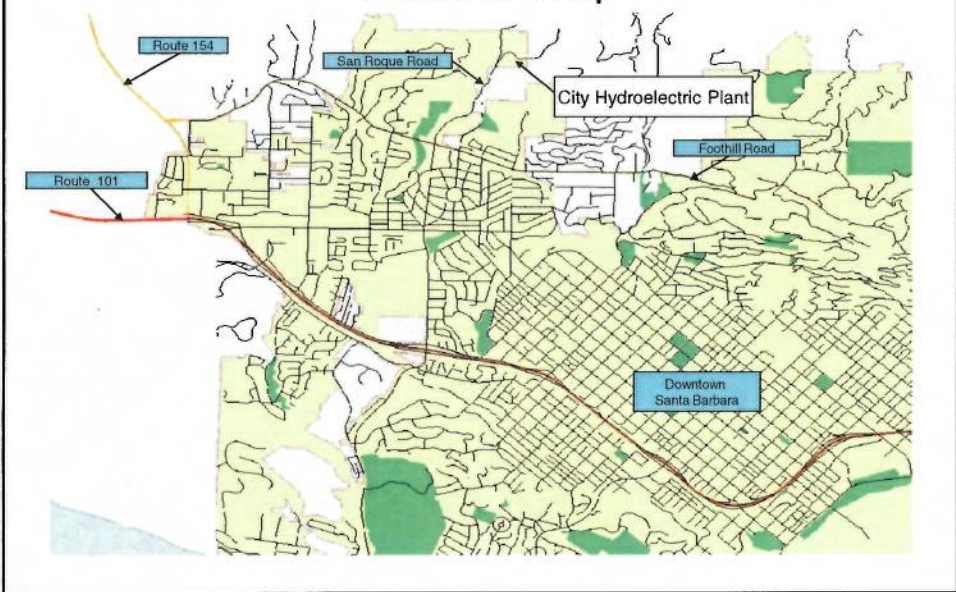


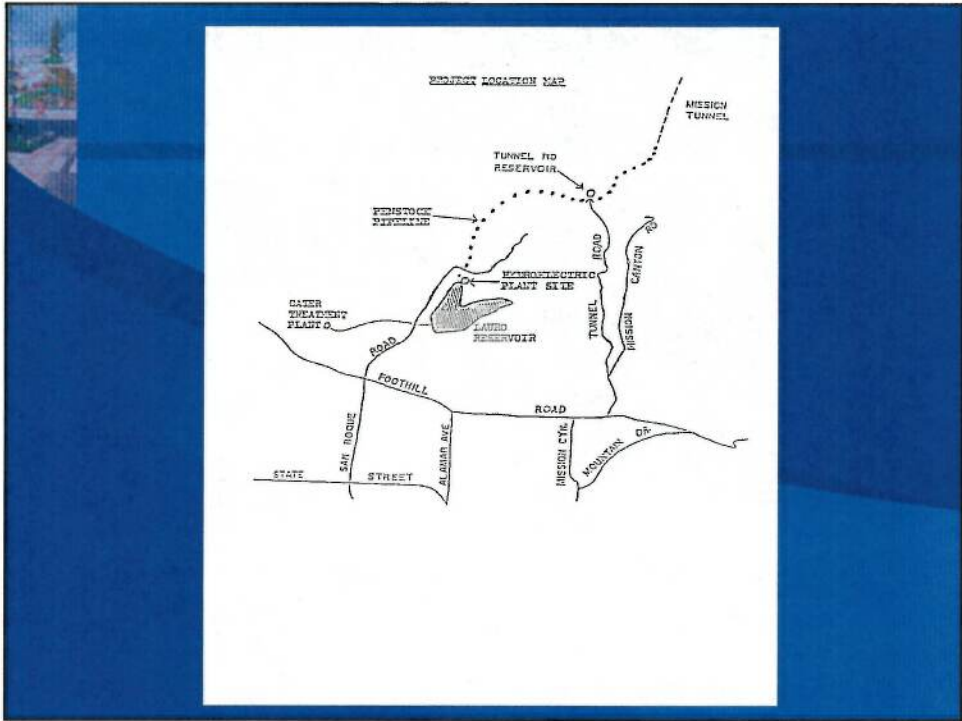
City Hydroelectric Plant

Clean, renewable, environment friendly power source



City Hydroelectric Plant Location Map





Hydroelectric Powerplant Building



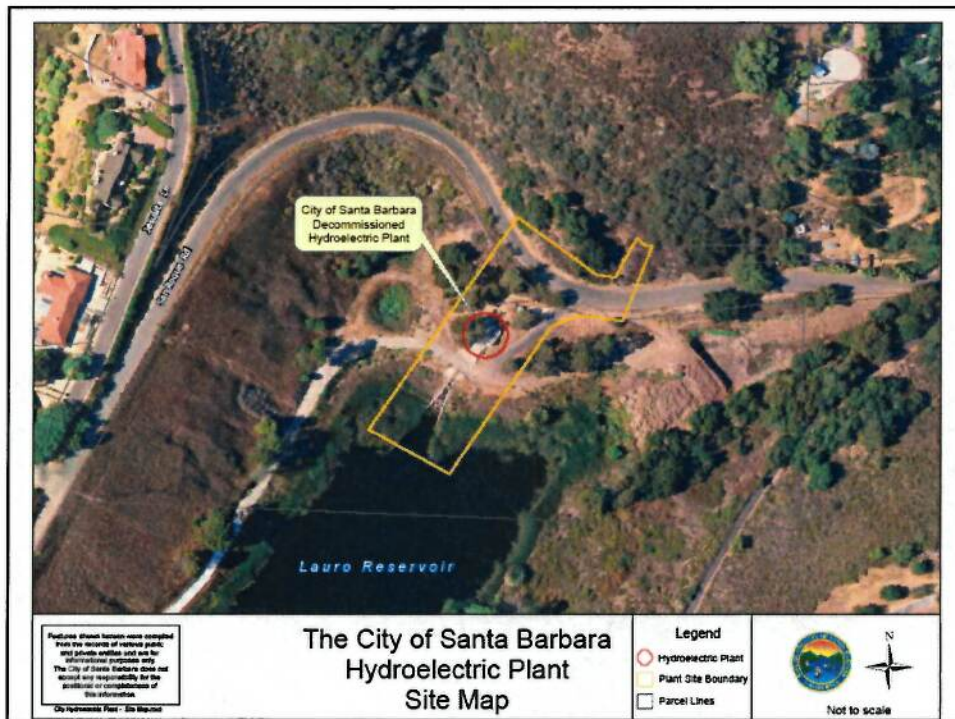
Why is the plant idle?

- ◆ Costs exceeded revenues (1985-1998)
- ◆ Gibraltar Reservoir water supply threatened
- ◆ Result- Federal Energy Regulatory Commission (FERC) license surrendered in Dec. 2002

Why consider restarting Hydroelectric Plant?

- ◆ New renewable energy rate structure*
- ◆ Possibility to eliminate FERC oversight*
- ◆ Resume clean energy production

* Brown & Caldwell Technical Memoranda
June 2009



How will the City acquire the Hydroelectric Plant land?

- ◆ COMB declares plant land as excess
- ◆ City Council adopts a Resolution Of Intent to Accept Real Property
- ◆ USBR files a Report of Excess Land
- ◆ GSA disposes of land

Summary

- ◆ Progress reactivating plant
- ◆ Plant land declared excess
- ◆ GSA - land disposal process
- ◆ SCE permit
- ◆ FERC exemption
- ◆ Plant renovation