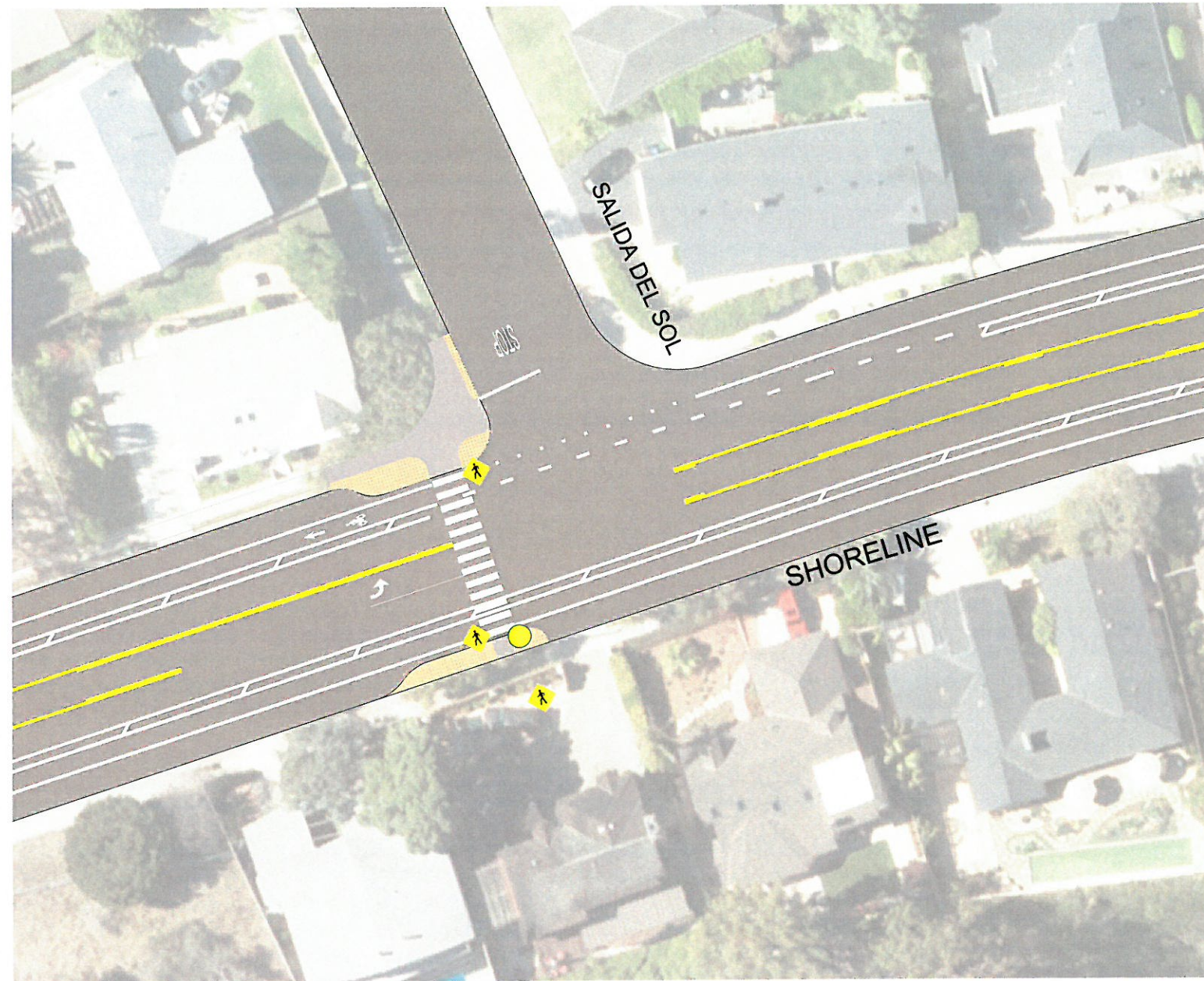


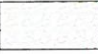








WASHINGTON ELEMENTARY SAFE ROUTE TO SCHOOL OPTION CROSSWALK AT SHORELINE/SALIDA DEL SOL



- | | | | |
|---|---|---|----------------------------------|
|  | PARKWAY/POTENTIAL STORMWATER INFILTRATION |  | TRAFFIC SIGNALIZED INTERSECTION |
|  | MEDIAN |  | POTENTIAL TREE PLANTING LOCATION |
|  | CONCRETE MULTI USE PATH AT SIDEWALK LEVEL |  | NEW PEDESTRIAN SCALE LIGHT |
|  | ASPHALT MULTI USE PATH AT STREET LEVEL |  | NEW CROSSWALK WITH FLASHERS |
| | |  | EXISTING LIGHT |



CITY OF SANTA BARBARA PUBLIC WORKS	
CLIFF DRIVE MULTI USE PATH	
SERVICE REQUEST: NA	WORK ORDER: NA
SHEET: 1 OF 1	DATE: 10/17/2019
SCALE: 1"=30'	DRAWN BY: DB