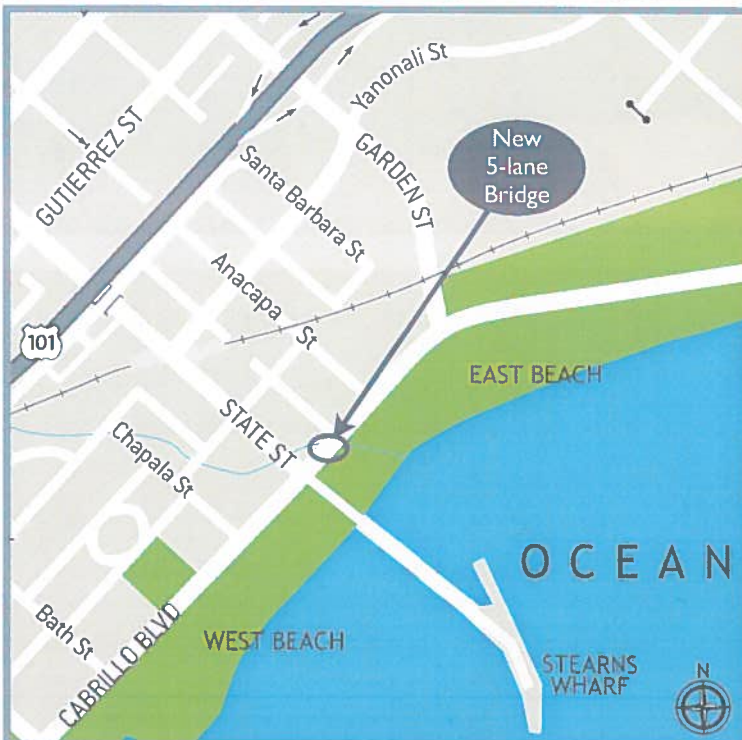


# CABRILLO BOULEVARD BRIDGE REPLACEMENT



## BENEFITS OF A NEW BRIDGE

- Improved safety
- Increased water flow capacity under bridge
- Enhanced Mission Creek banks
- New habitat areas for steelhead trout and tidewater gobies
- Improved pedestrian pathways and lighting

### CONSTRUCTION SCHEDULE

Fall 2014 – 2016  
7am – 8pm  
(some nighttime work as needed)

### LOCATION

Cabrillo Blvd. Bridge over Mission Creek (between State Street and Helena Avenue)

### COST/FUNDING

\$23 million  
funded by Federal Highway Bridge Program and Measure A

## BACKGROUND

The Cabrillo Boulevard Bridge over Mission Creek was originally built in 1917 and needs to be replaced to meet current earthquake and vehicular safety standards.

The new bridge will increase water flow capacity and reduce the risk of flooding. There will also be improvements to pedestrian walkways and lighting to enhance this busy waterfront area.

## CABRILLO BOULEVARD: OPEN DURING CONSTRUCTION

At least one lane in each direction will remain open on the Cabrillo Boulevard Bridge during daytime construction. Construction is phased into three stages to allow the new bridge to be built while allowing use by vehicles, people, and bicycles. **Cabrillo Boulevard will reopen fully in late 2016 with 2 lanes in each direction and a middle 2-way turn lane.**

# BRIDGE CONSTRUCTION

**STAGE 1: FALL 2014**



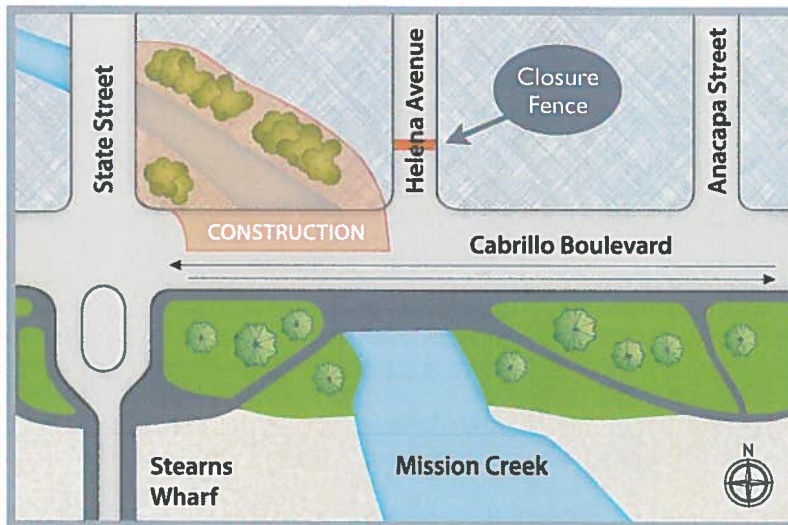
The bridge will be built in 3 stages to allow vehicular, pedestrian, and bicycle traffic to use Cabrillo Boulevard throughout construction.

- Demo a portion of the patio connected to the old bridge at 13 E. Cabrillo Blvd.
- Drill piles for the new bridge

*Traffic Flow:*

- Alternating lane closures as needed on Cabrillo Blvd.

**STAGE 2: 2015**

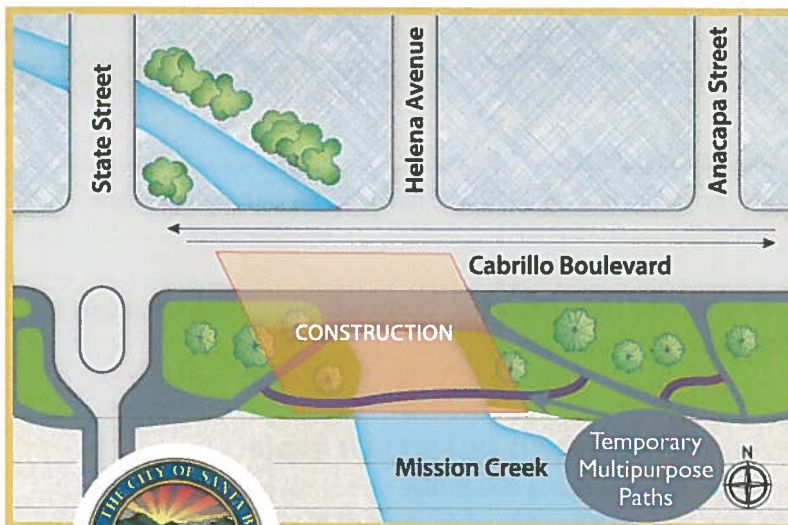


- Remove and rebuild north side of existing bridge
- Construct new Mission Creek banks
- Construct temporary multipurpose paths along beach front and relocate utilities

*Traffic Flow:*

- One lane in each direction will be open on the south side of Cabrillo Blvd.
- No left turns from Cabrillo Blvd. onto Stearns Wharf
- Helena Ave. will be temporarily closed at Cabrillo Blvd.

**STAGE 3: 2016**



- Remove and rebuild south side of existing bridge
- Construct new Mission Creek banks

*Traffic Flow:*

- One lane in each direction will be open on the north side of Cabrillo Blvd.
- No left turns from Cabrillo Blvd. onto Stearns Wharf
- Helena Ave. will open for right turns onto Cabrillo Blvd.



For more information contact Adam Hendel, Supervising Civil Engineer  
805.897.1921 | ahendel@santabarbaraca.gov