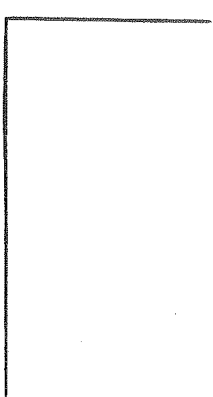
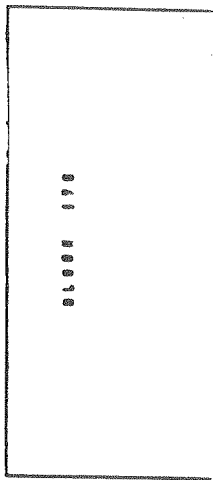
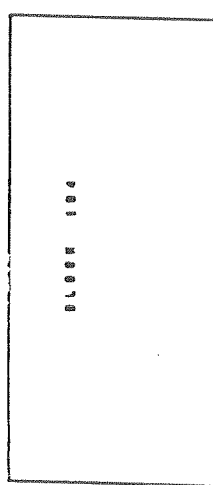
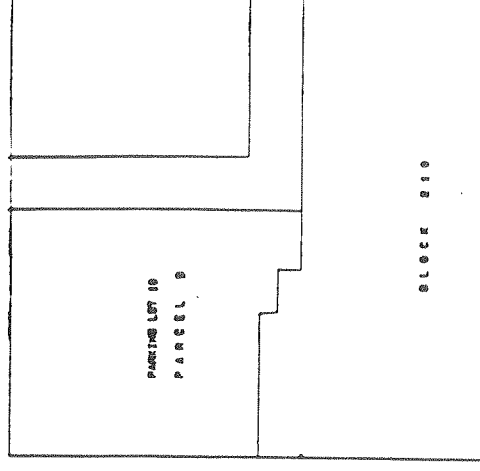
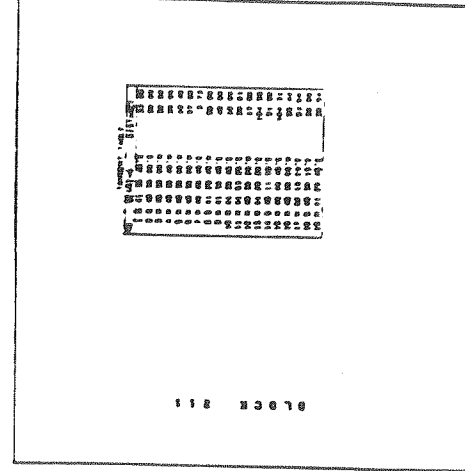
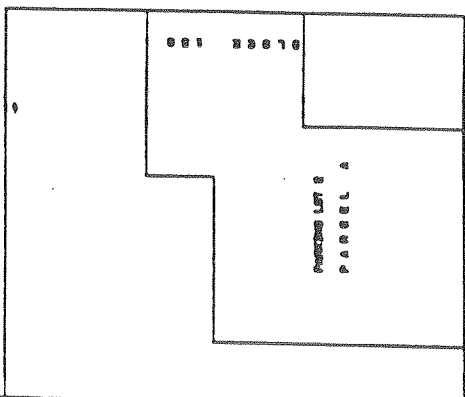
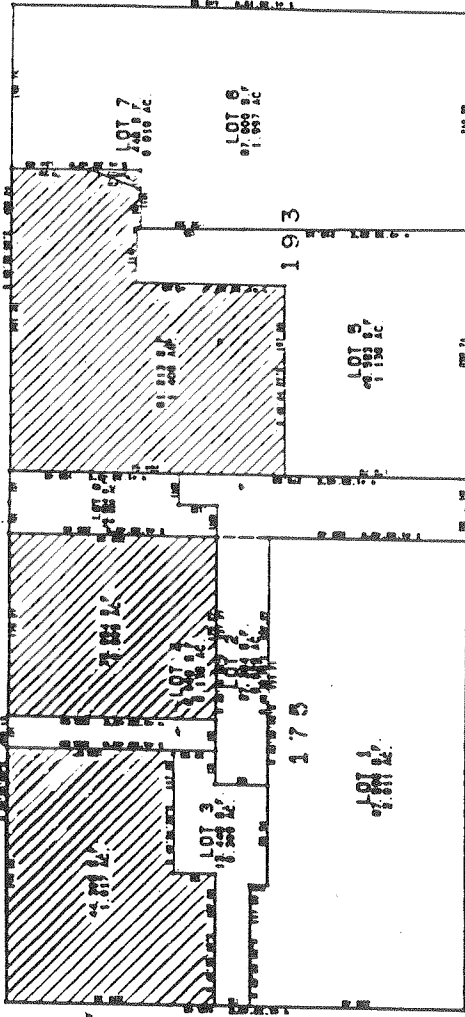
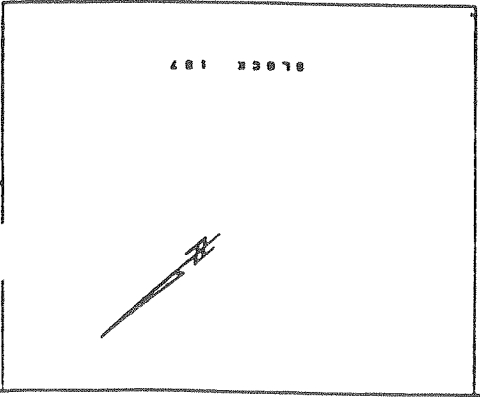
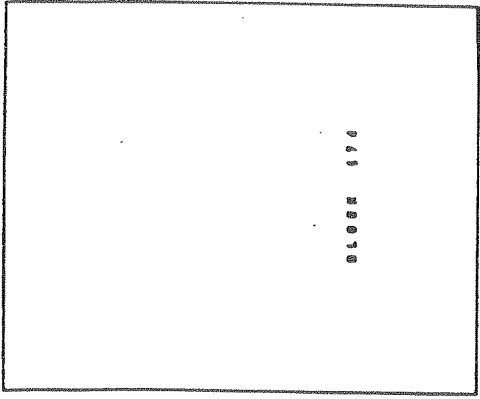
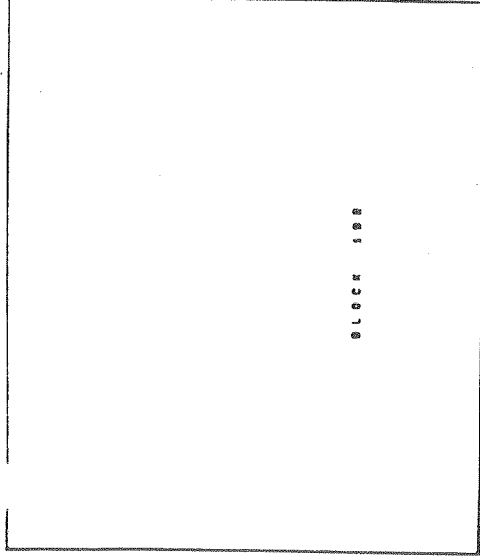


AMACAPA STREET

OPAS STREET

AMACAPA STREET



**TECHNICAL SERVICES**  
 ENGINEERING INC.  
 1111 AVENUE G, SUITE 100  
 SAN ANTONIO, TEXAS 78203  
 TEL: 512-343-1111 FAX: 512-343-1112

DATE: 11/11/03  
 DRAWING NO: 193-01

PROJECT: 193-01  
 SHEET NO: 193-01-1

SCALE: AS SHOWN

DATE: 11/11/03

BY: [Signature]

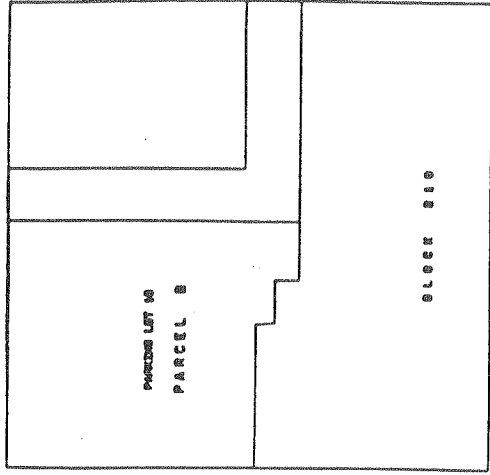
CHECKED: [Signature]

APPROVED: [Signature]

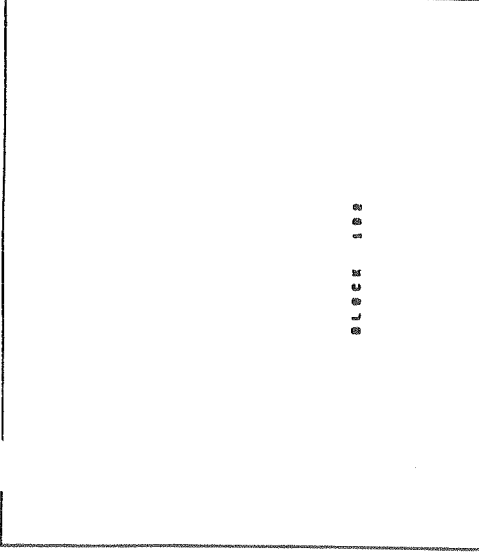
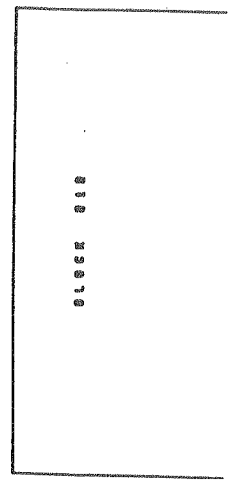
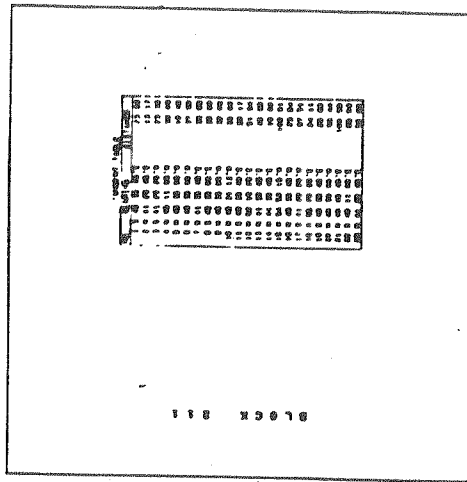
CITY OF SAN ANTONIO

ATTACHMENT 1A - PARCEL MAPS  
 CITY BLOCKS 178 & 180  
 CITY OF SAN ANTONIO

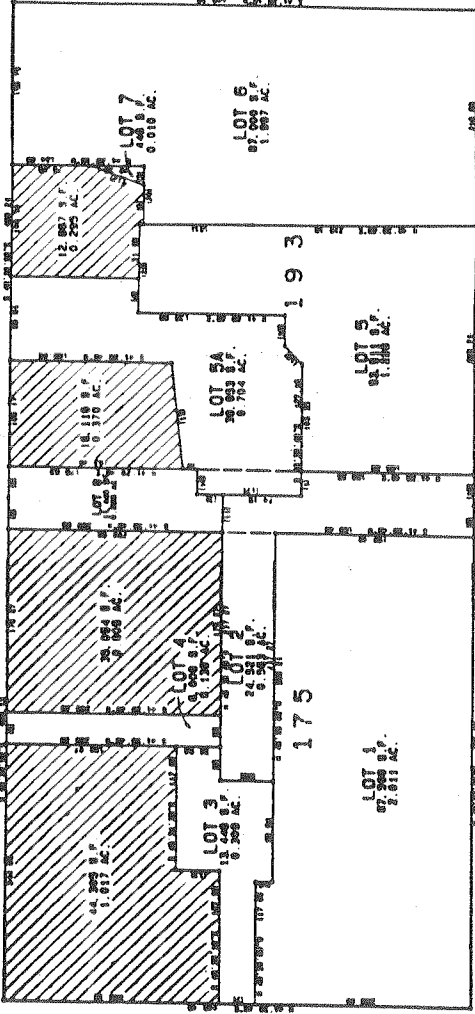
ANACAPA STREET



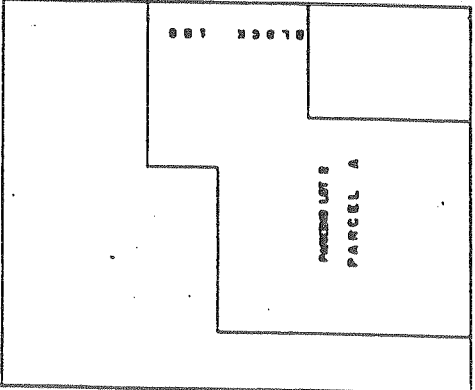
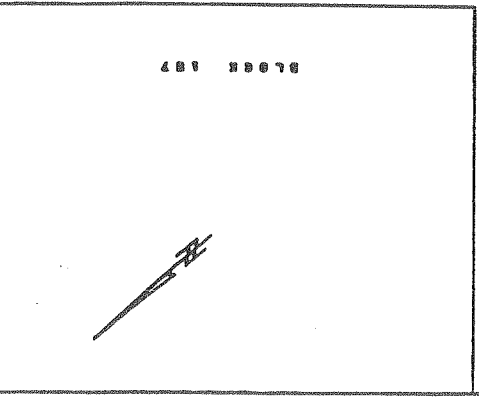
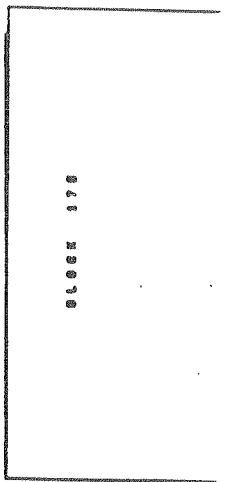
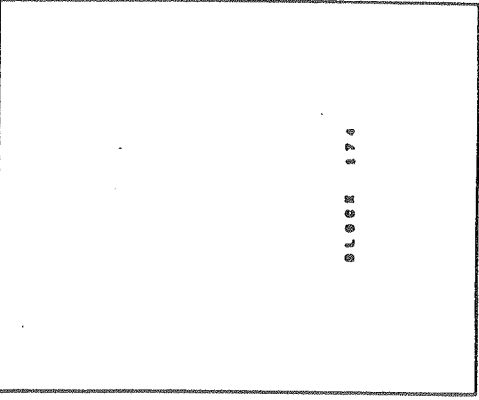
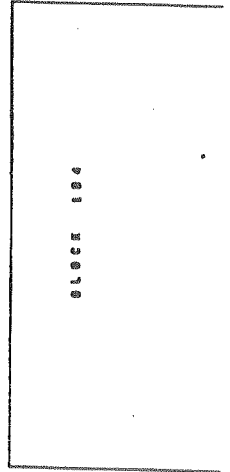
BLOCK 210



STATE STREET



ANACAPA STREET



**Peninsula Planning**

City of Santa Barbara, California  
 Planning Department  
 111 West State Street, Suite 200  
 Santa Barbara, CA 93101  
 Phone: (805) 964-1111  
 Fax: (805) 964-1112

DATE: 10/15/03  
 DRAWN BY: J. B. BROWN  
 CHECKED BY: J. B. BROWN  
 APPROVED BY: J. B. BROWN

PROJECT: 03-001  
 SHEET: 1B OF 1B

ATTACHMENT 1B - PLANNING MAP  
 CITY BLOCKS 174 & 193  
 CITY OF SANTA BARBARA

SCALE: 1" = 100'