

HISTORIC LANDMARKS COMMISSION  
HISTORIC SIGNIFICANCE REPORT  
Prepared by Nicole Hernandez, MFA, City Architectural Historian  
January 2021

# 225 STATE STREET SANTA BARBARA, CALIFORNIA

**Designation Status:** Listed on the Potential Historic Resources List since 2014, Contributing structure to El Pueblo Viejo Landmark Districts

**Assessor Parcel Number:** 029-282-010

**Constructed:** 1921/1925

**Architect:** Unknown

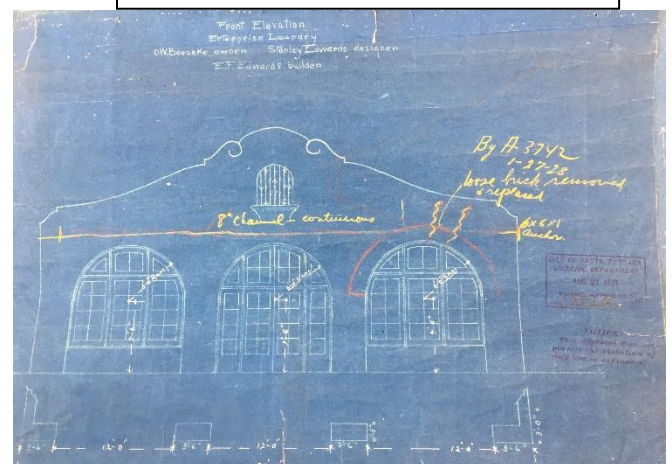
**Architectural Style:** Vernacular Brick Commercial building

## Background:

The Historic Landmarks Commission added the building to the Potential Historic Resources List in 2014 based on the findings of the East Beach/Waterfront Survey that found the building eligible to be designated as a Structure of Merit. Originally constructed in 1909 as a one-story, concrete building for Enterprise Laundry. The owners replaced the building in 1921 with a one-story brick building. The June 29, 1925 earthquake damaged the building. The drawings for the repairs for the building dated August 21, 1925, illustrate the brick building sheathed in stucco. The building followed the new vision for Santa Barbara in its Spanish Colonial Revival features with three large, arched openings with true divided lights and a terra-cotta lined parapet facing State Street. The building remained Enterprise Laundry until 1974. In the 1970s survey, the front façade still had the stucco remaining, but a front-facing gable with terra-cotta tile coping replaced the Mission style parapet illustrated in the 1925 drawing, it is not known if the parapet was ever constructed as per the drawing, and the windows have less divided lights from those in the 1925 drawings. In 1977, Enterprise Fish Company renovated the building, removing the stucco from the brick façade. Sometime since 1977, the owners replaced the windows in the façade with four fixed divided lights.



View of building after 1925 Earthquake.



225 State Street original drawings dated August 21, 1925

**The building is eligible for designation as a Structure of Merit under the following criteria provided by the Municipal Code, Section 22.22.040.**

**Historic Integrity:** The large openings on State Street remain, but the windows themselves are not original, nor do the existing windows match those in the 1977 drawings. The 1977 drawing illustrates the large opening on the north elevation facing the parking lot as enclosed with brick and a double-hung window as existing. The façade has also been stripped of the stucco façade of the 1925 building. Designed as a brick building with a stucco façade lined with terra-cotta coping in 1925. The 1977 renovation stripped the façade to expose the building as a vernacular commercial brick building. At the alteration to the brick façade may be a change that has acquired its own significance, the building can convey its 1977 appearance as a vernacular brick commercial building, but it does not convey its 1925 appearance.



1977 Drawings of the building directing stucco removal from brick

**Criterion I. Its unique location or singular physical characteristic representing an established and familiar visual feature of a neighborhood;**

Designed as a Spanish Colonial Revival style building with a stucco façade in 1925. The 1977 renovation stripped the stucco façade to expose the building as a vernacular commercial brick building. The unique and expressive brick façade with its three, large rounded arch openings facing State Street has been an established and familiar feature of State Street since 1977 and the changes to the property have acquired historic significance in its own right.

