



Downtown Parking Thanksgiving Occupancy Survey



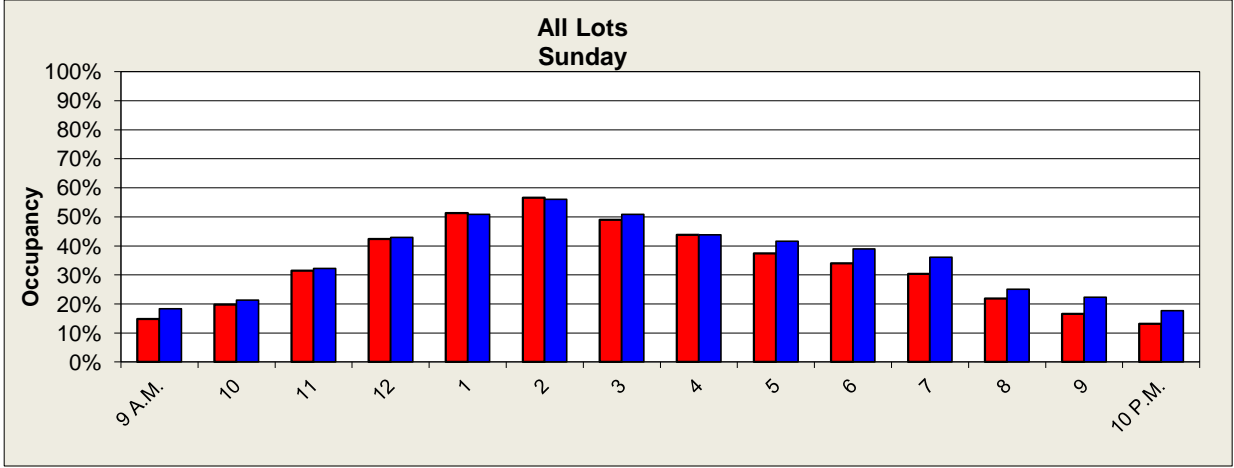
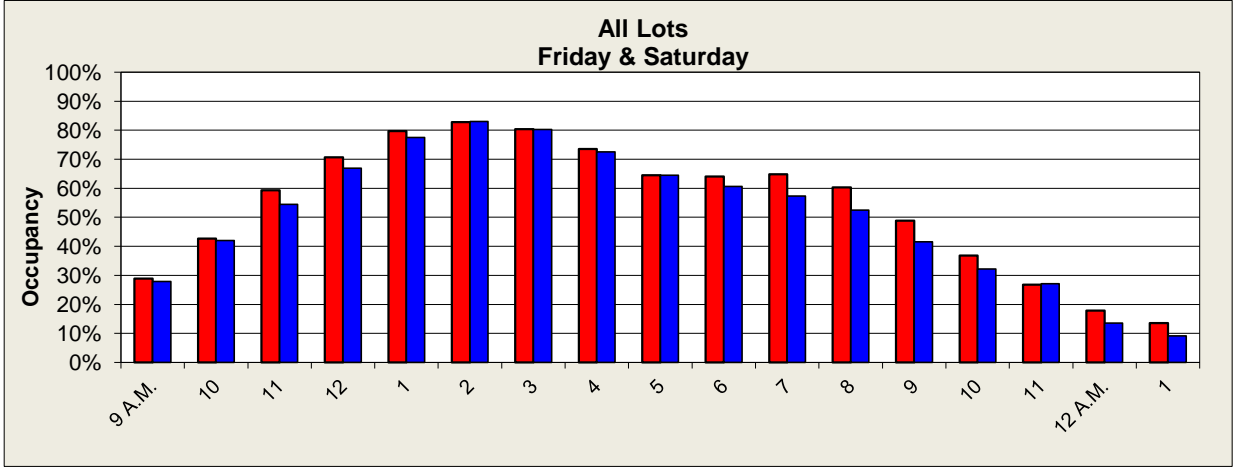
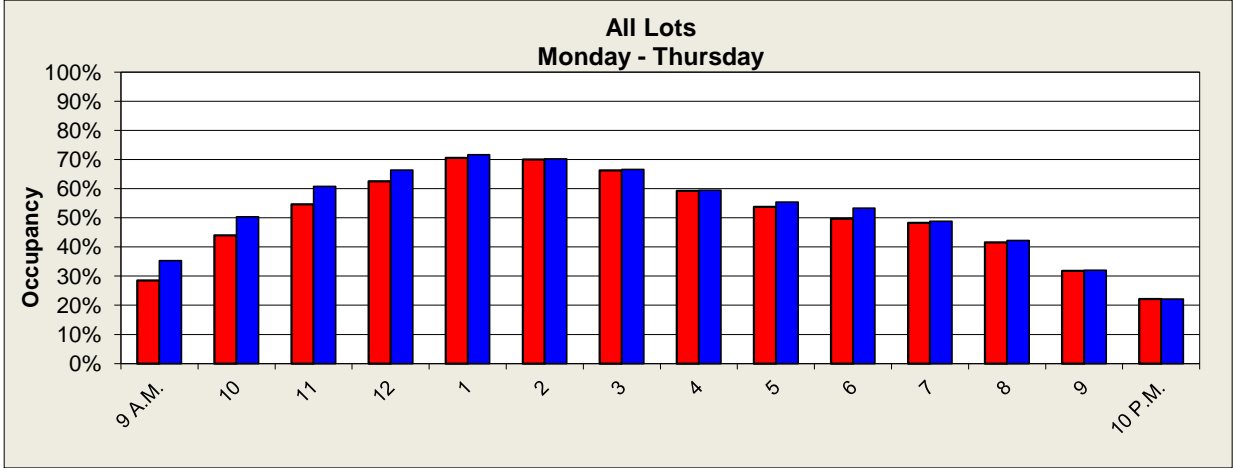
11/24/2014 thru 11/30/2014

vs.

11/25/2013 thru 12/01/2013

Parking System Occupancy Graphs Based on 3200 Total Spaces Thanksgiving Week, 2014 vs. 2013

2014 **2013**



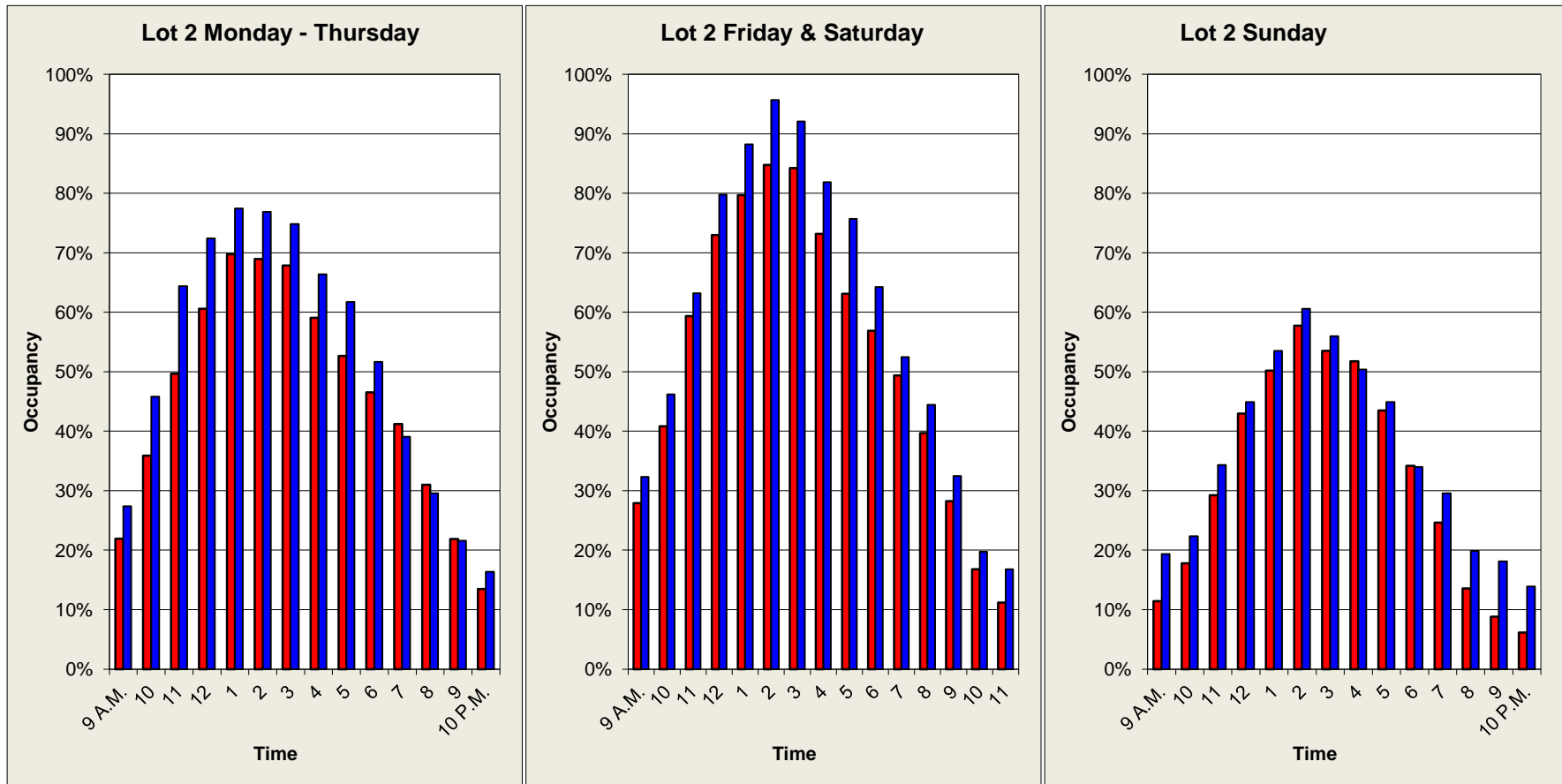
Thanksgiving Week
2014 vs. 2013

Lot 2

Spaces: 568, parking structure.
(Nordstrom, Canary Hotel, Powell Peralta)

2014

2013



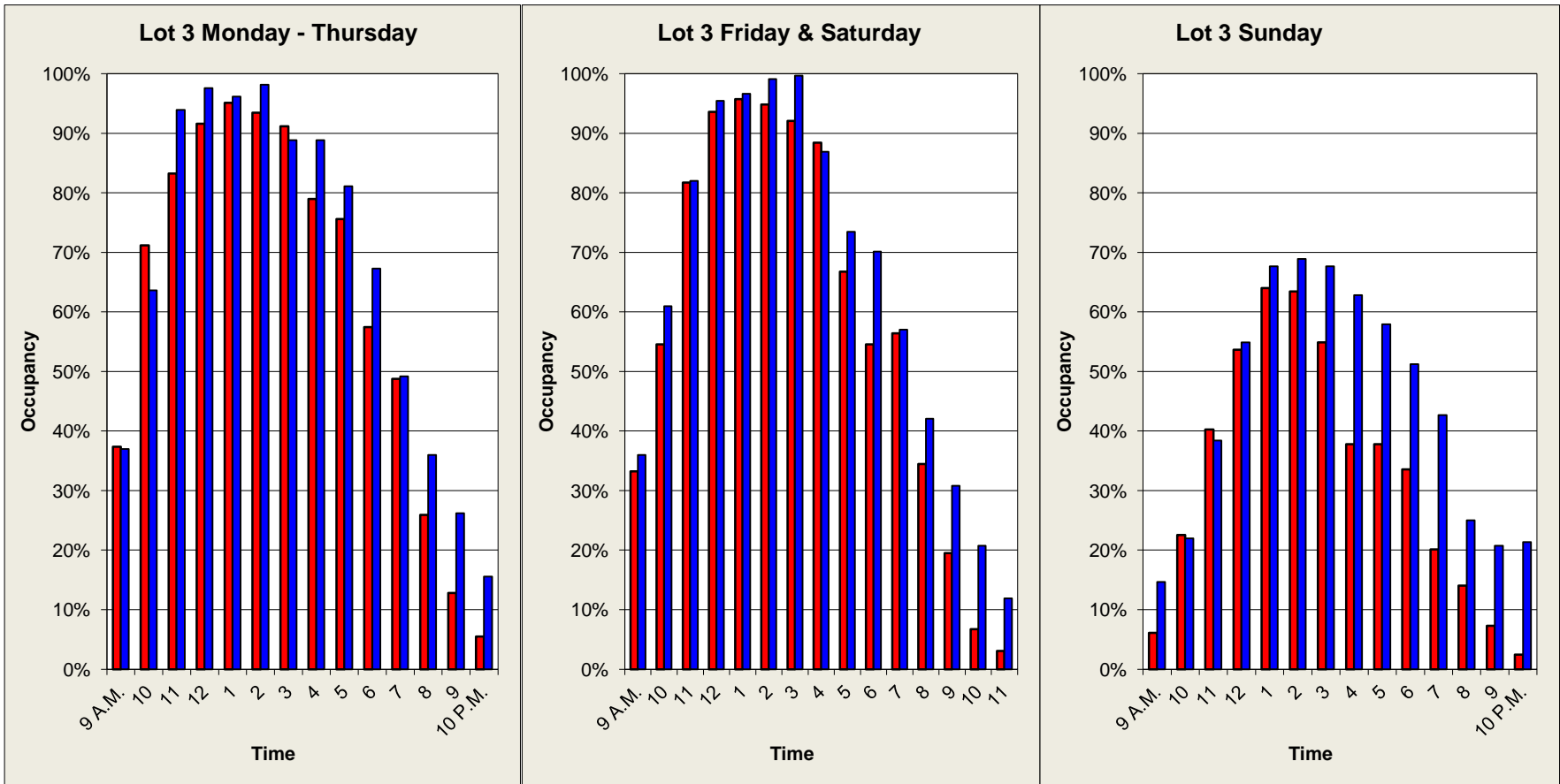
Thanksgiving Week
2014 vs. 2013

Lot 3

Spaces: 164, surface lot.
(MTD Bus Station, Saks, Walter Claudio, Old Greyhound)

2014

2013

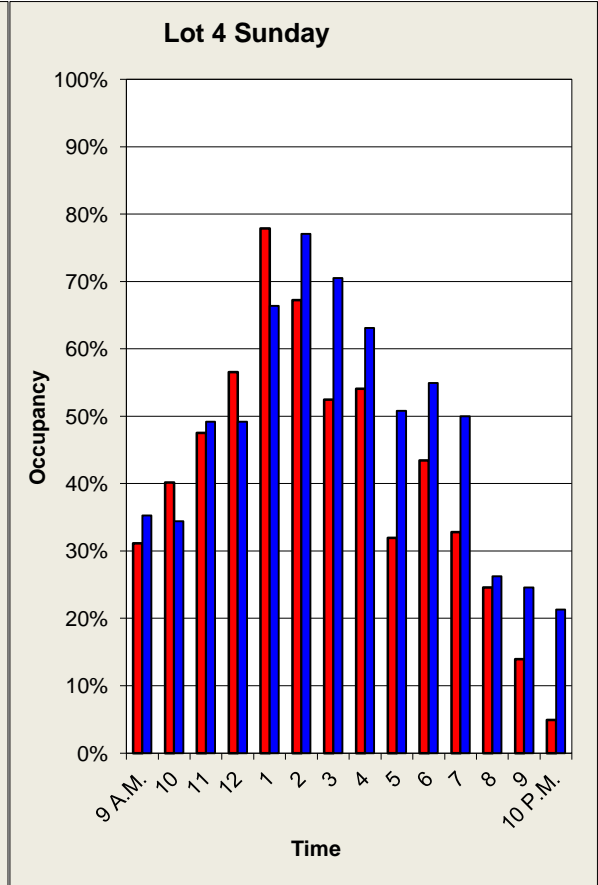
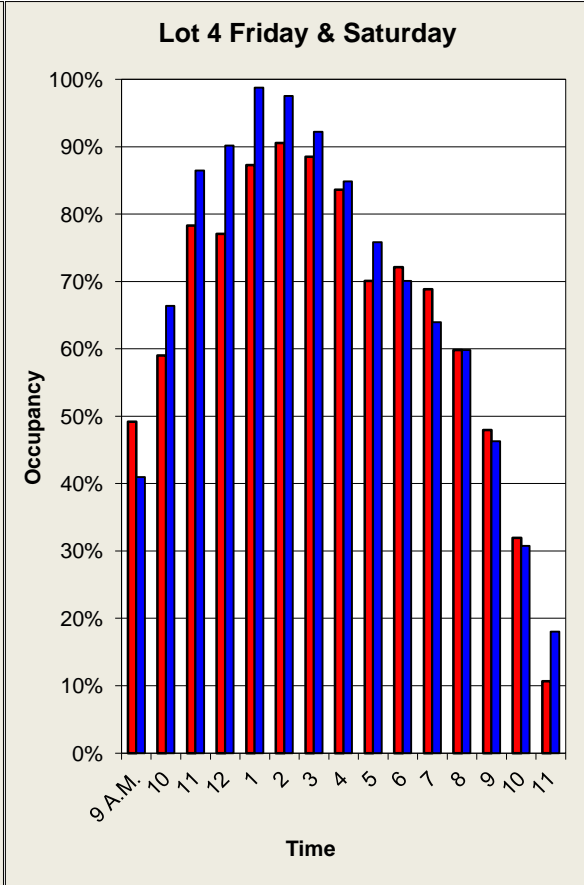
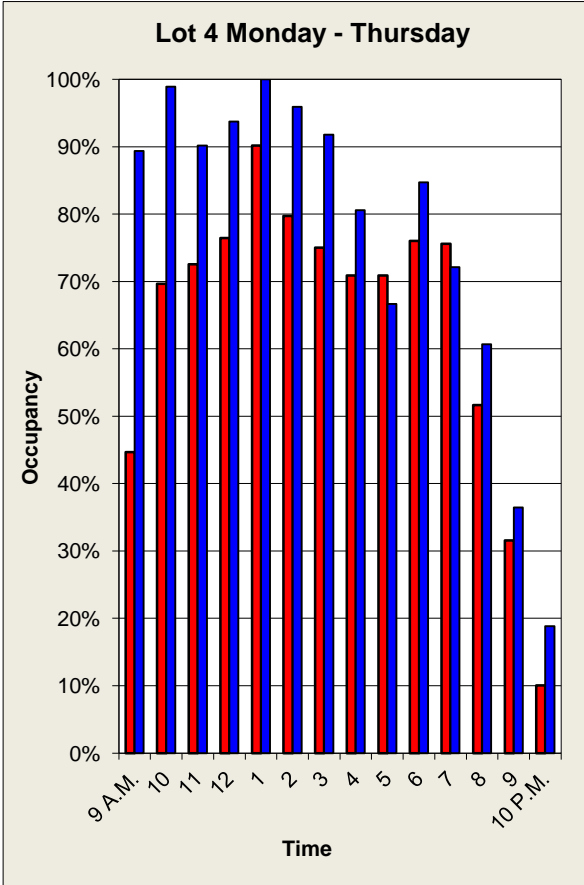


Thanksgiving Week
2014 vs. 2013

Lot 4

Spaces: 122, surface lot.
(CVS, Hennings, Sansum Clinic, Don Q's, Core Yoga)

2014 **2013**

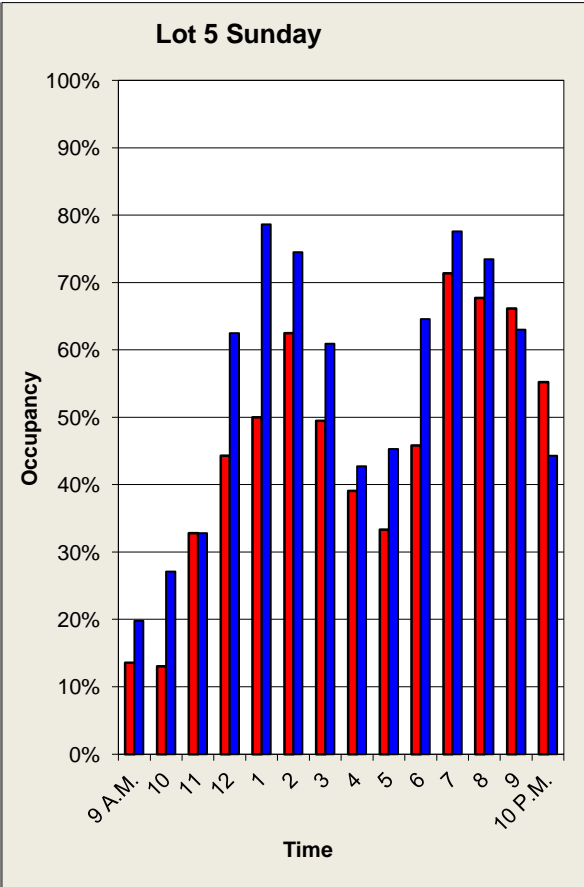
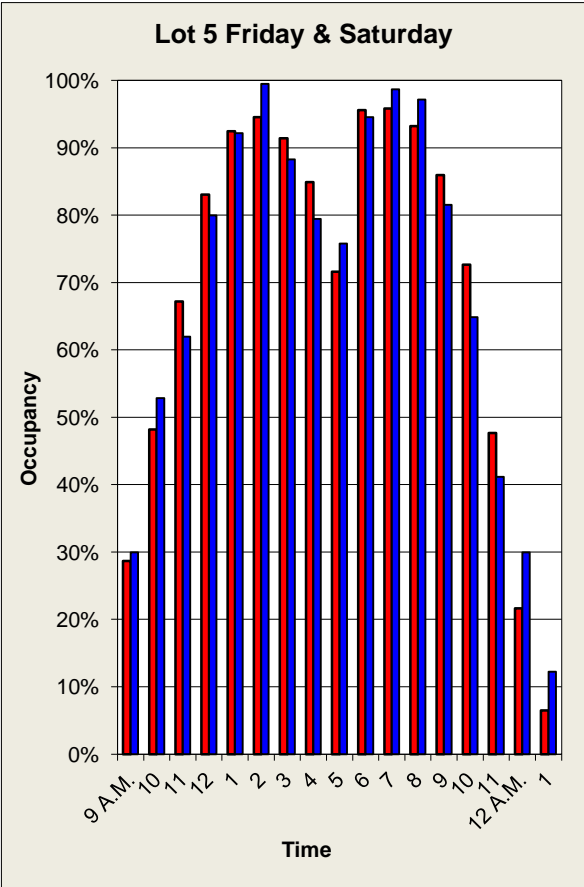
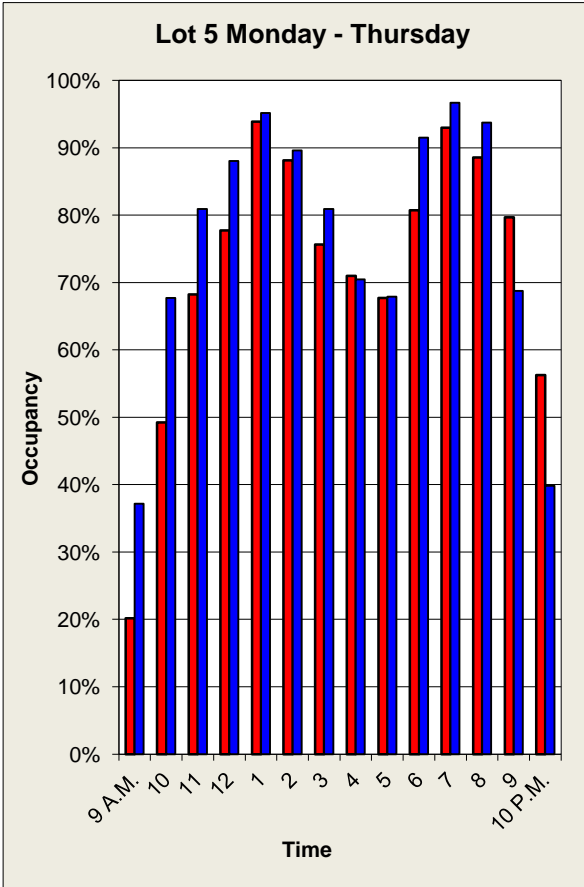


**Thanksgiving Week
2014 vs. 2013**

Lot 5

Spaces: 192, surface lot.
(SOHO Club, Unity Shoppe, New Vic Theatre)

2014 **2013**

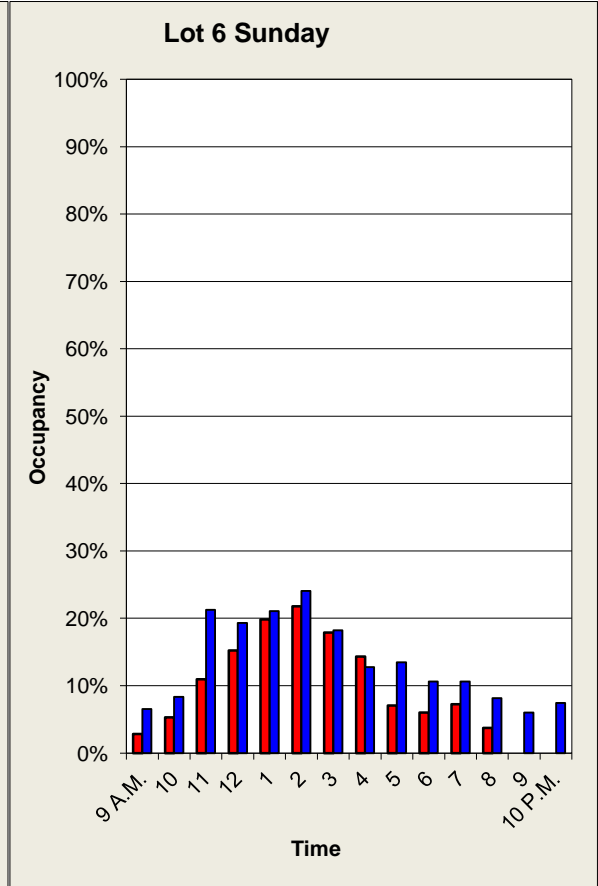
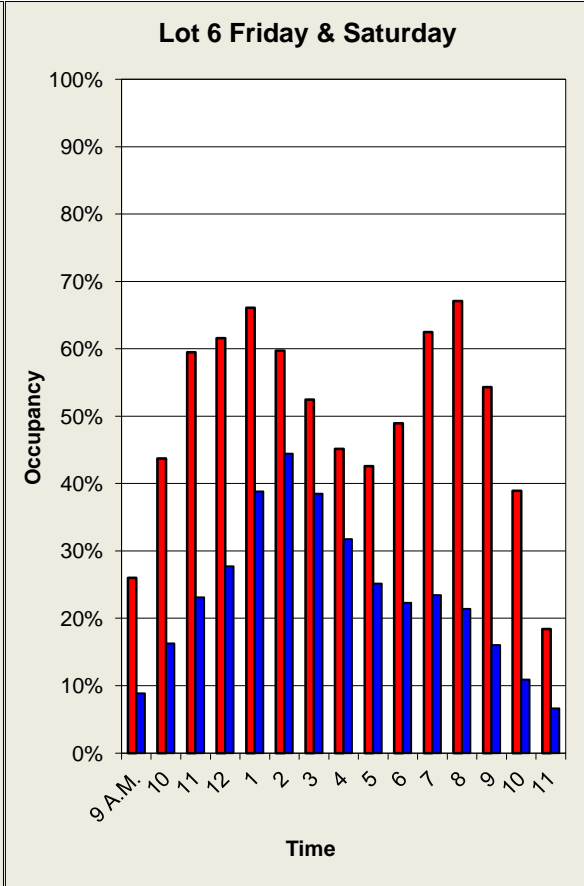
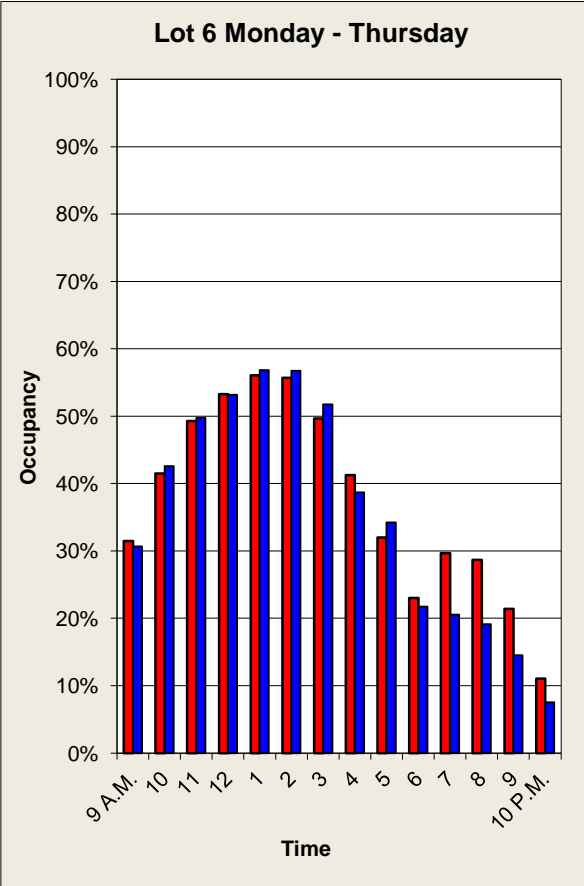


**Thanksgiving Week
2014 vs. 2013**

Lot 6

Spaces: 565, parking structure.
(Granada Garage, Coffee Cat, Tupelo Cafe, Book Den)

2014 **2013**



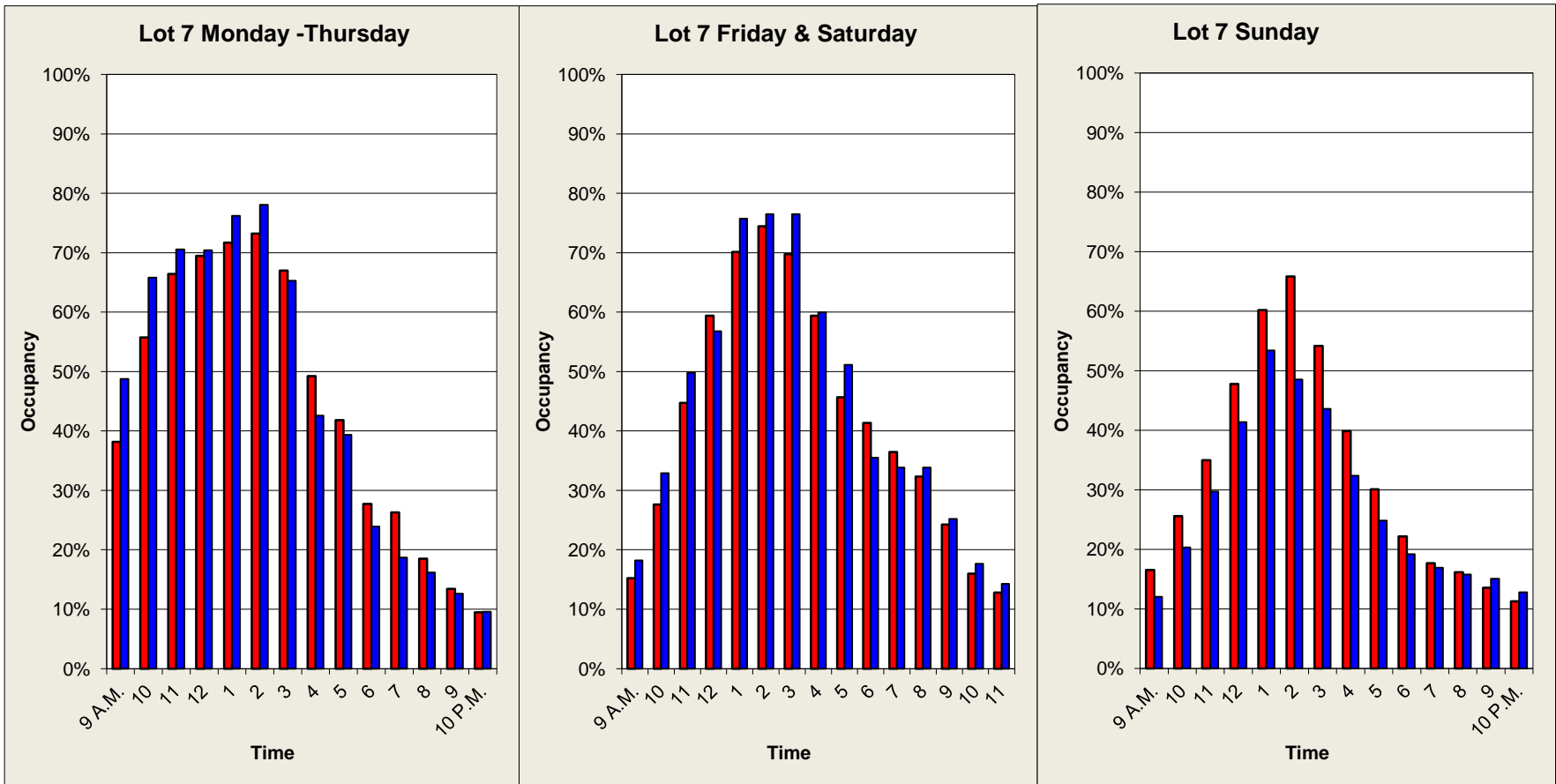
Thanksgiving Week
2014 vs. 2013

Lot 7

Spaces: 266, parking structure.
(Library Garage, La Arcada, SBMA)

2014

2013

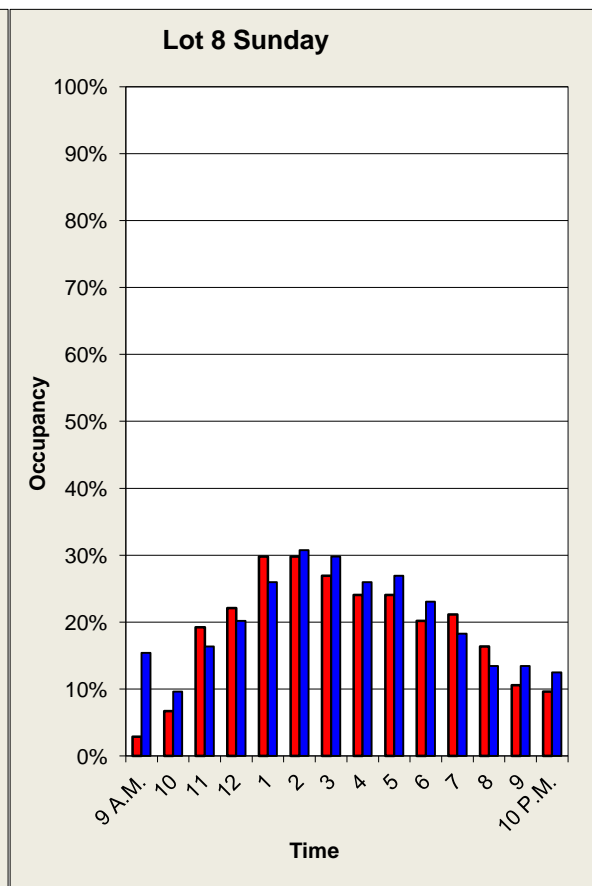
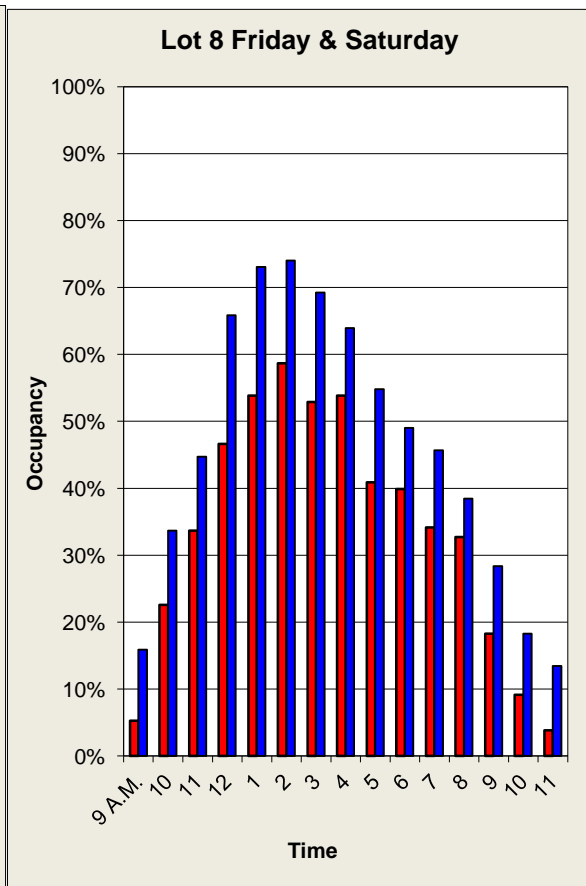
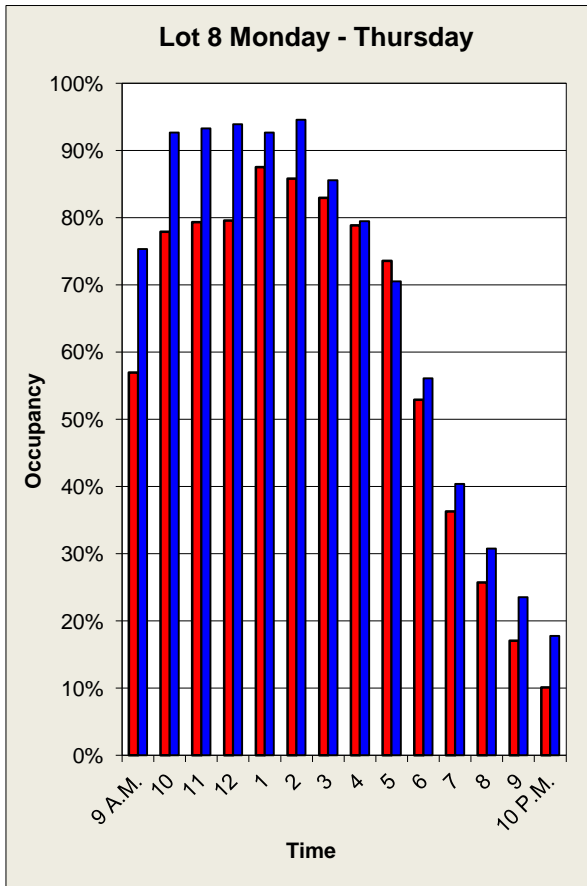


Thanksgiving Week
2014 vs. 2013

Lot 8

Spaces: 104, surface lot.
(Kinkos, Chase Grill, Rabobank, Bank of Santa Barbara)

2014 **2013**

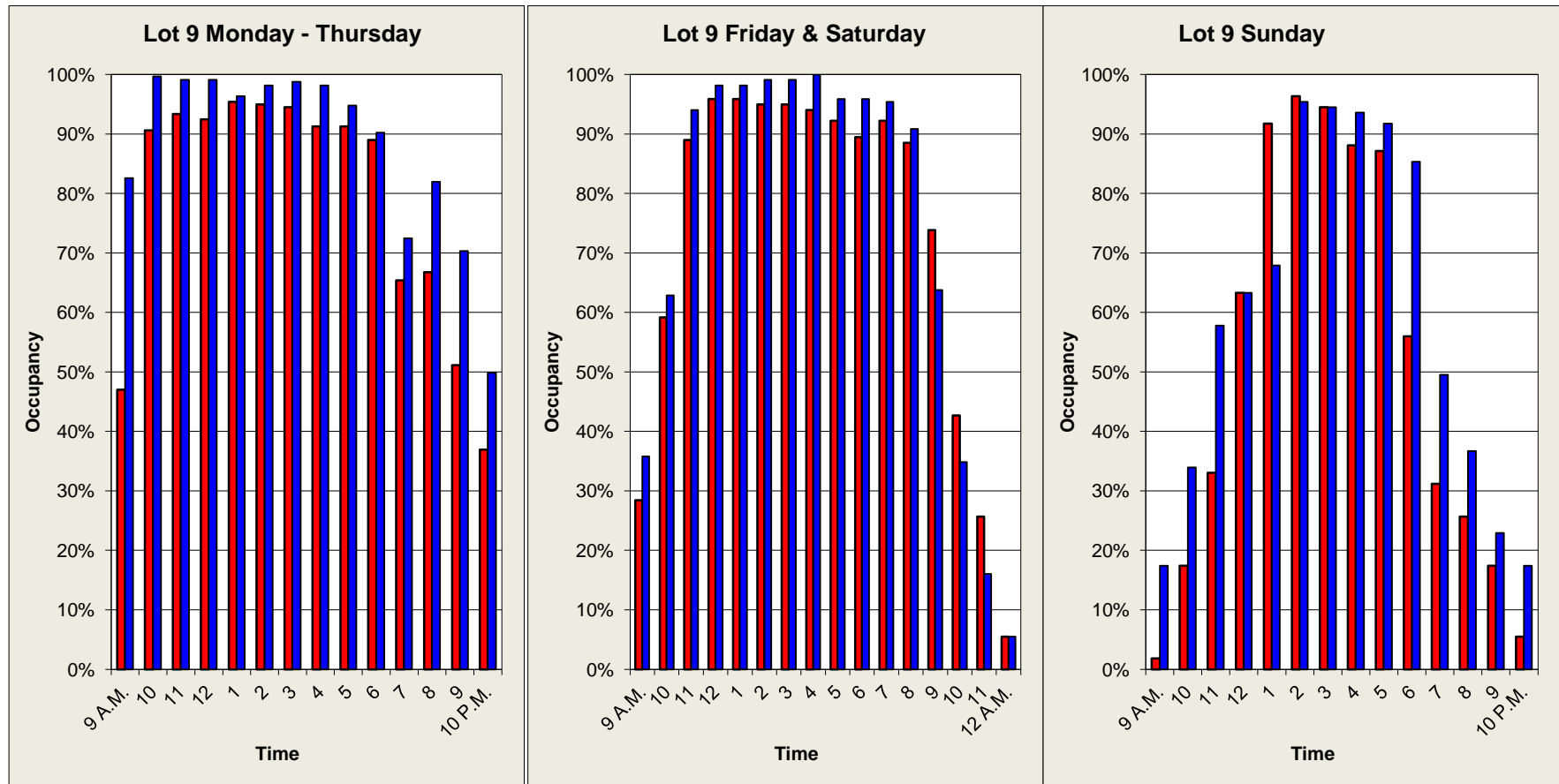


Thanksgiving Week
2014 vs. 2013

Lot 9 (Mid Level)

Spaces: 109 (Excluding 26 Basement Spaces)
(Lobero Garage, Fiesta 5, Marshalls, Union Bank, Apple Store)

2014 **2013**



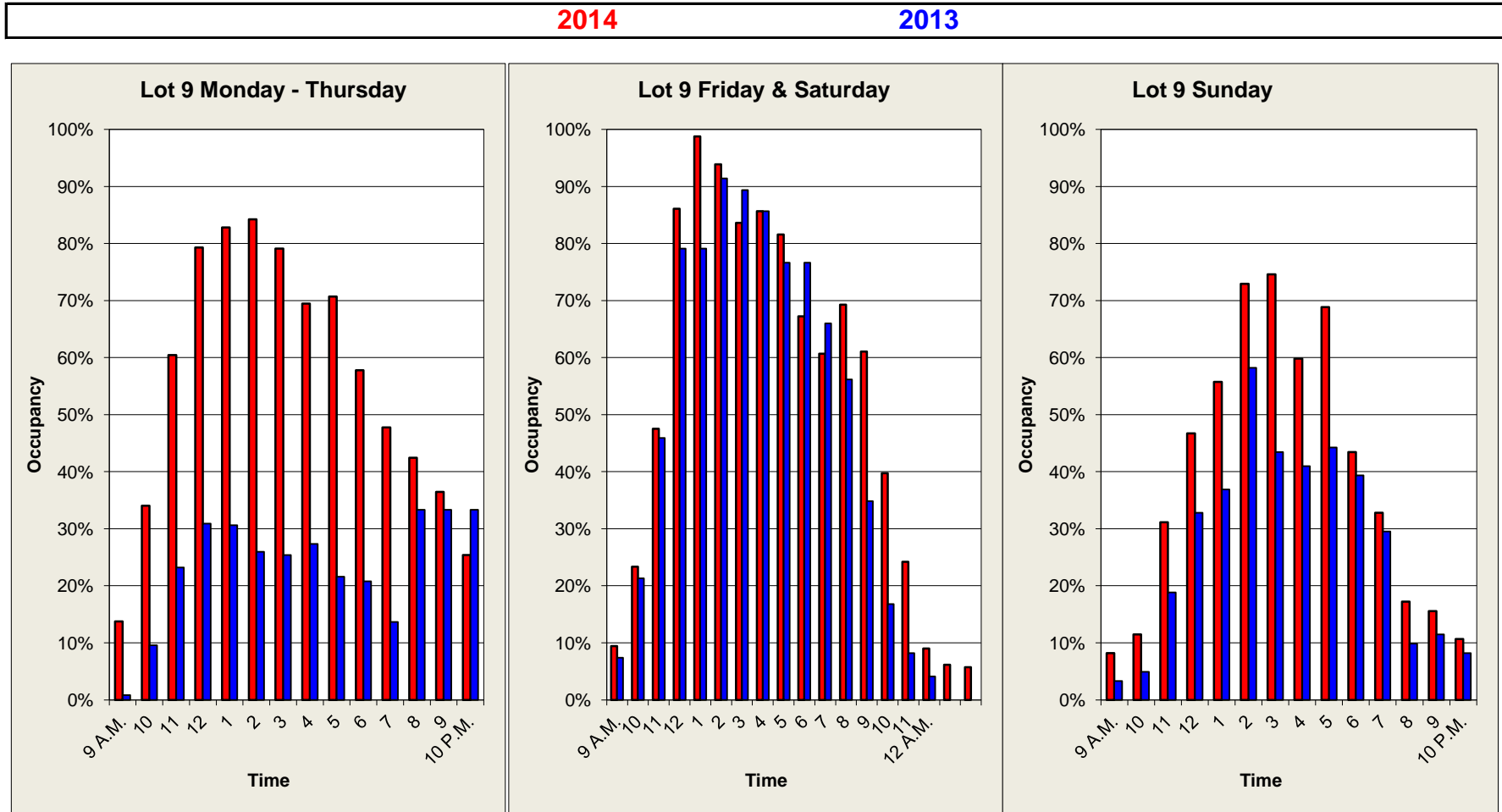
*During November and early December of 2013, Lot 9 underwent deck refurbishing and crack sealing.

Thanksgiving Week
2014 vs. 2013

Lot 9-2 (Top Level)

Spaces: 122

(Lobero Garage, Fiesta 5, Marshalls, Union Bank, Apple Store)



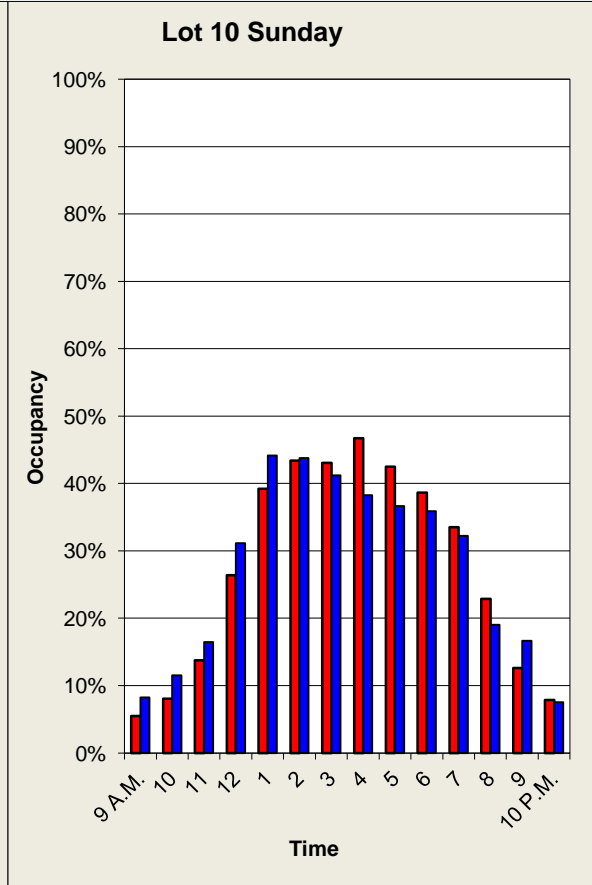
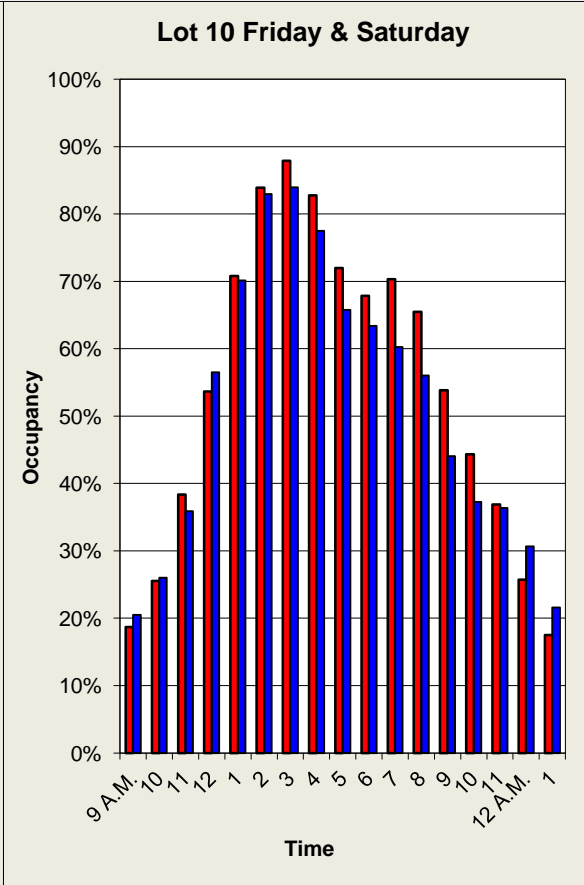
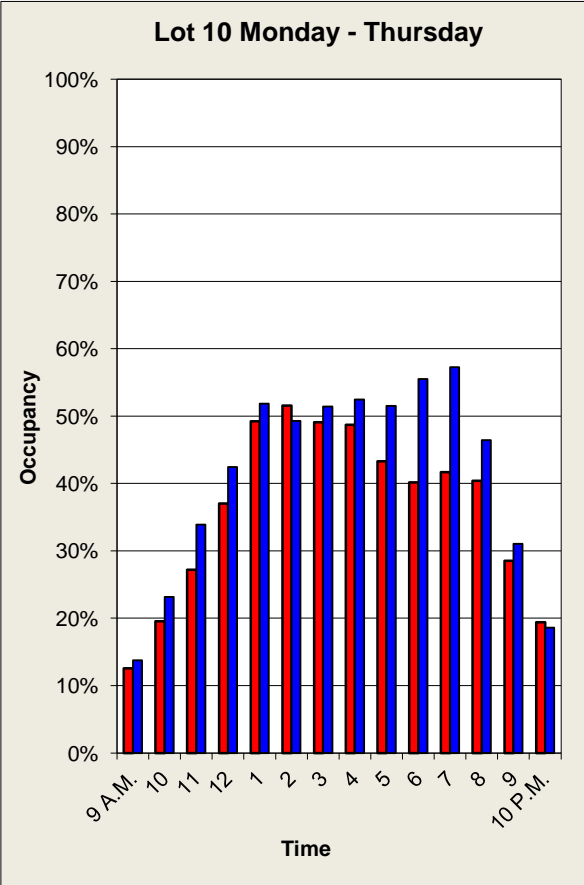
*During November and early December of 2013, Lot 9 underwent deck refurbishing and crack sealing.

**Thanksgiving Week
2014 vs. 2013**

Lot 10

Spaces: 546, parking structure.
(Ortega Garage, Dargan's, Habit, Seagrass, World Market)

2014	2013
------	------



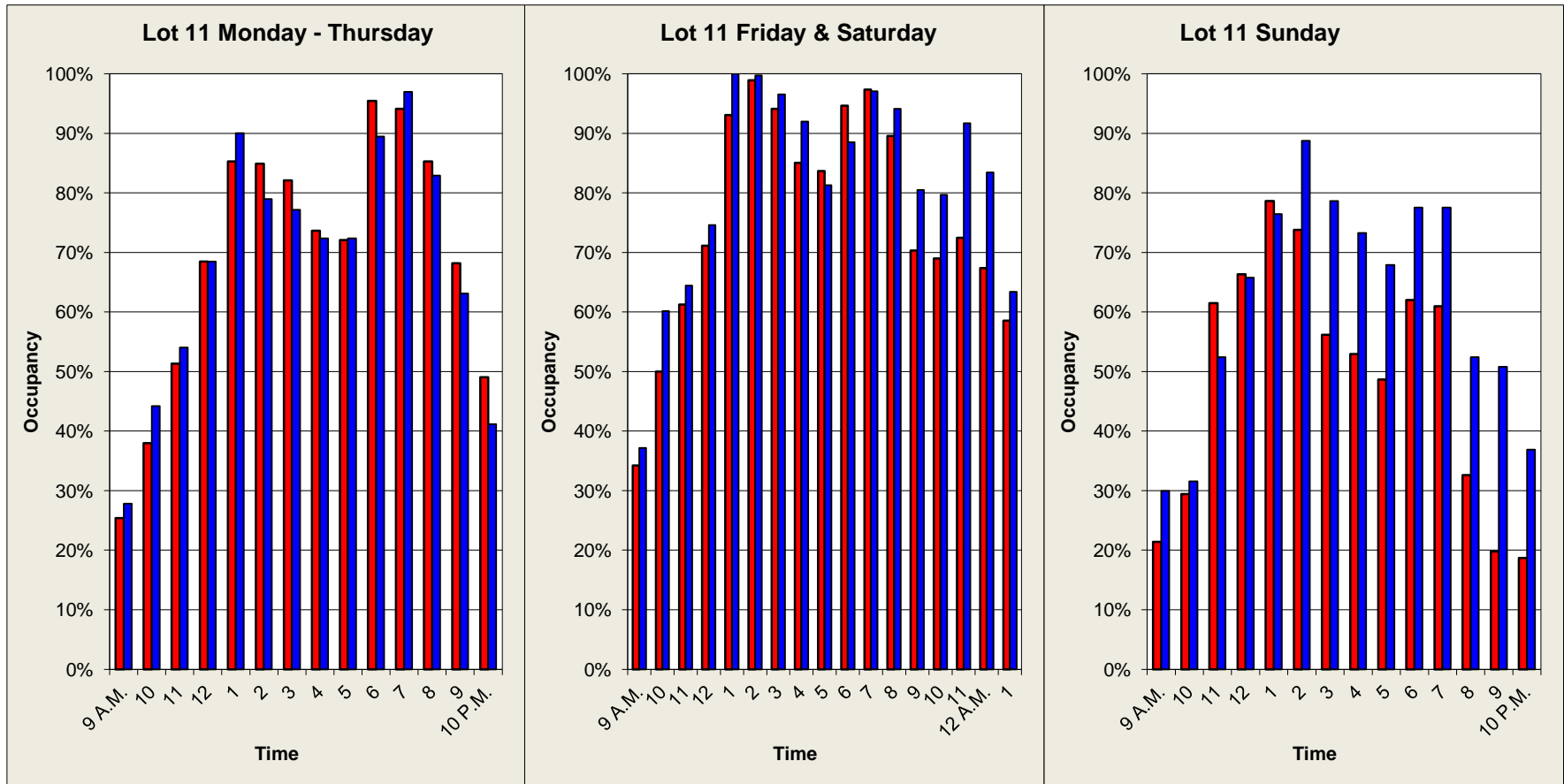
Thanksgiving Week
2014 vs. 2013

Lot 11

Spaces: 187, surface lot.
(Paul Mitchell, Pierre La Fond, Holdren's)

2014

2013



Thanksgiving Week
2014 vs. 2013

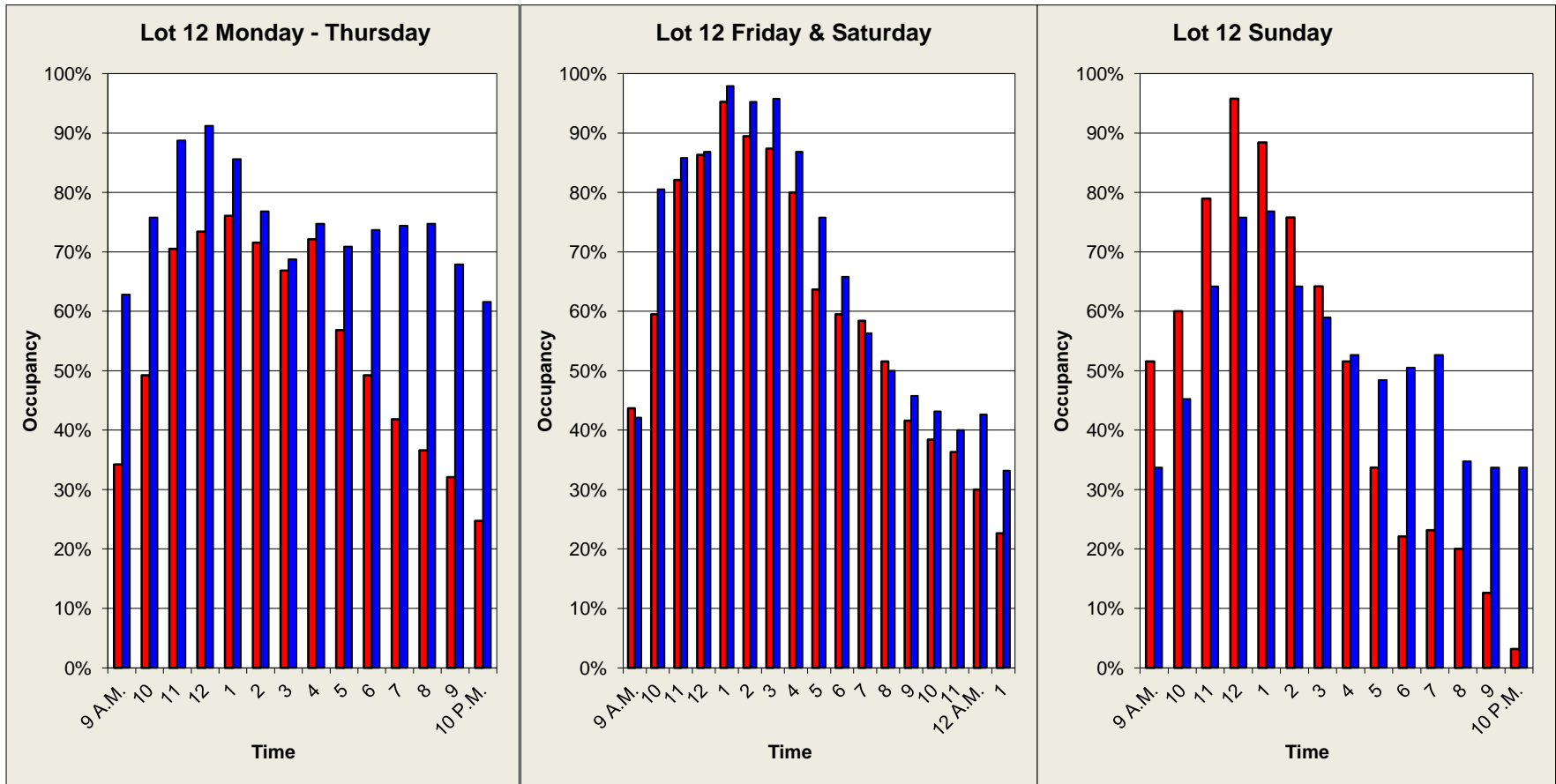
Lot 12

Spaces: 95, surface lot.

(Roasting Company Coffee, Backyard Bowls, D'angelo's)

2014

2013



Thanksgiving Week
2014 vs. 2013

Lot 13

Spaces: 160, surface lot.

(Amtrak/Greyhound Stations, Enterprise Fish Company, Ducati Store, Reagan Center)

2014

2013

