



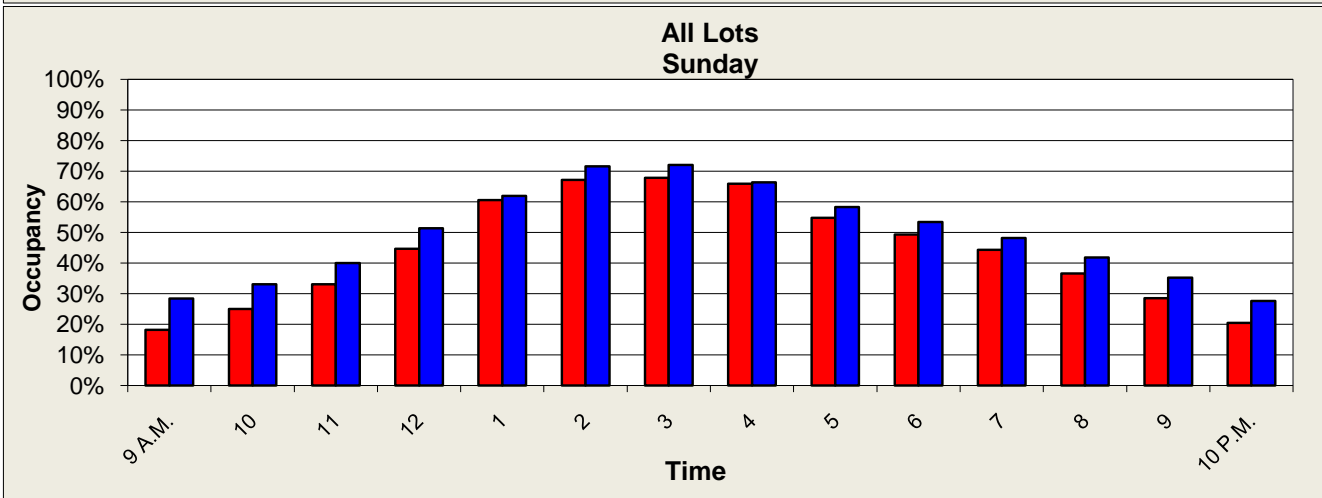
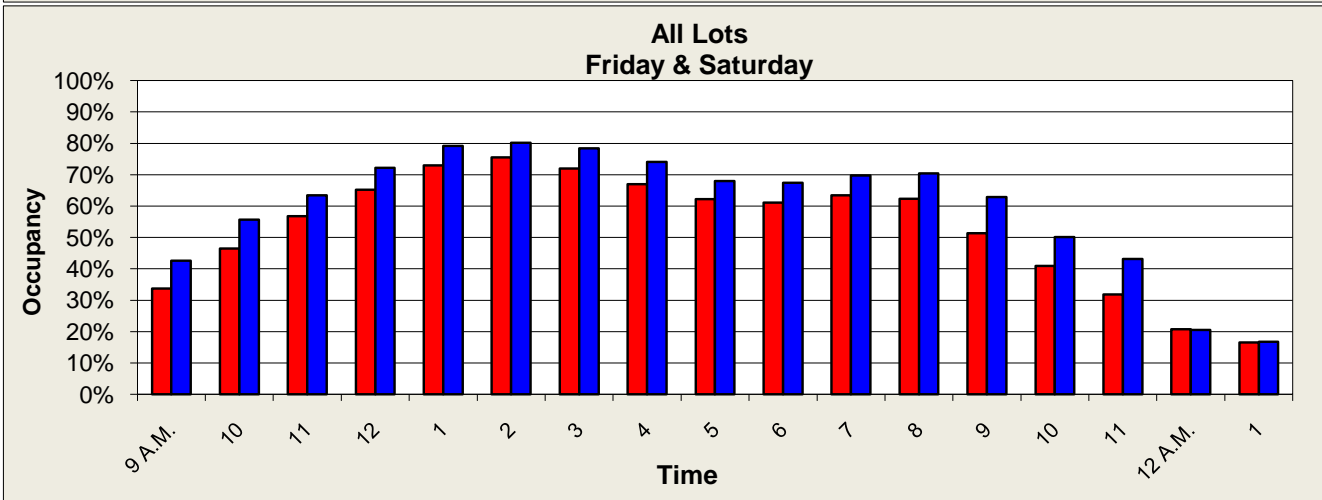
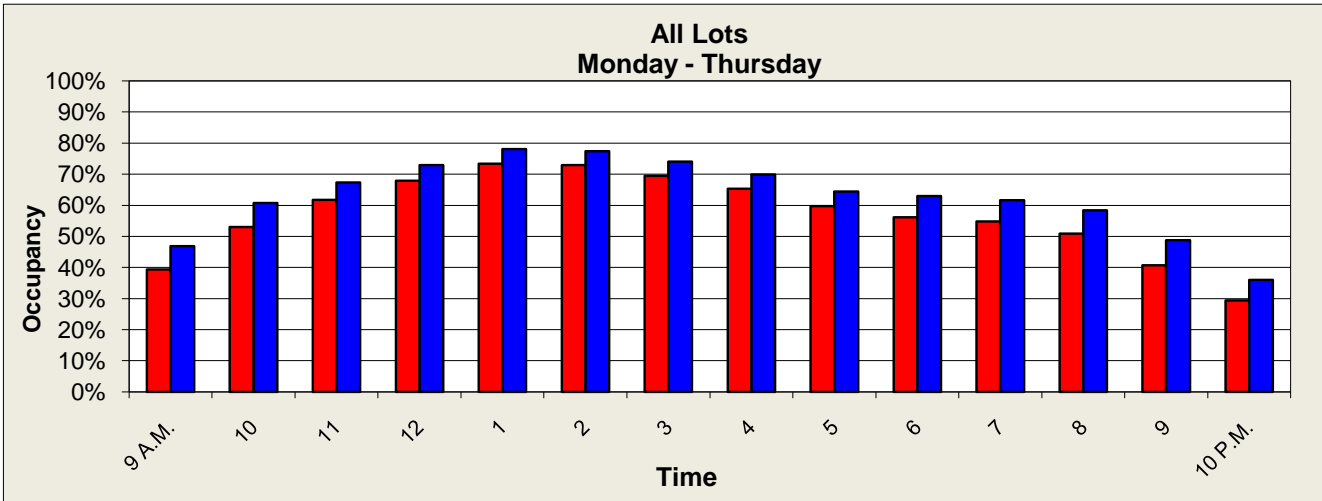
Downtown Parking Quarterly Occupancy Survey



2013 vs. 2012
January - March

Parking System Occupancy Graphs
Based on 3200 Total Spaces
 2013 vs. 2012, January - March

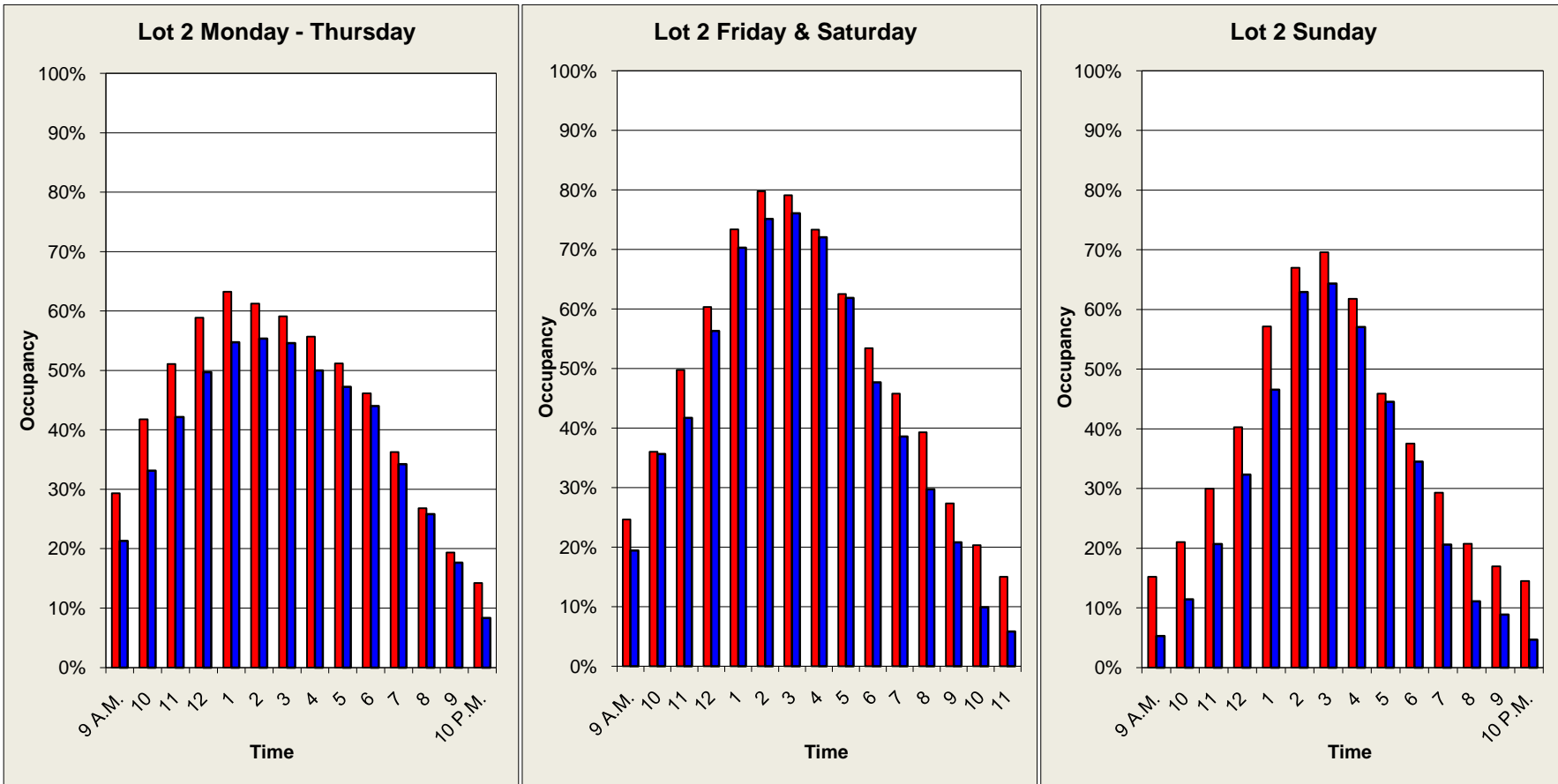
■ 2013 ■ 2012



Quarterly Occupancy Survey
2013 vs. 2012, January - March

Lot 2
Spaces: 568

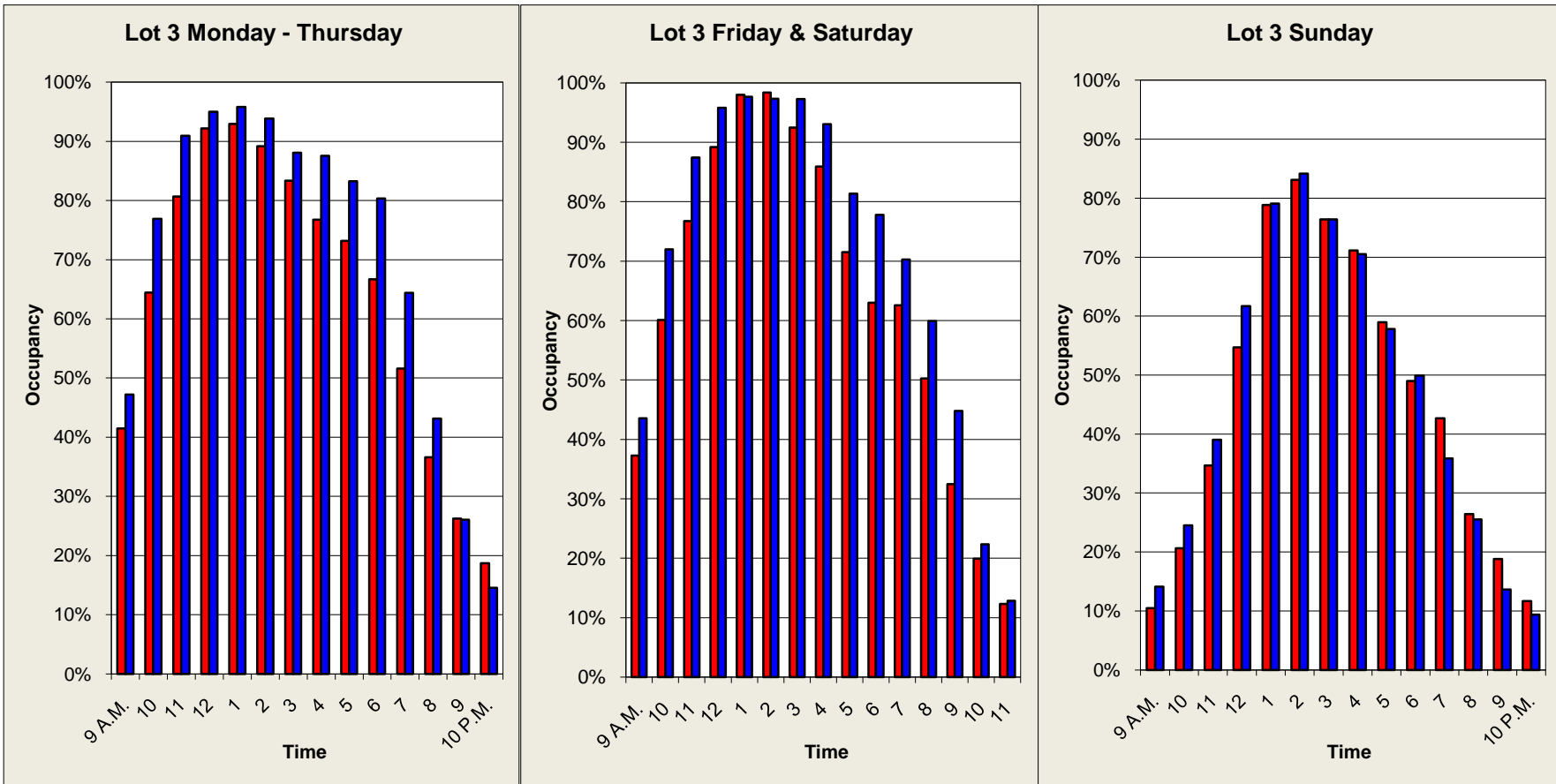
2013 2012



Quarterly Occupancy Survey
2013 vs. 2012, January - March

Lot 3
Spaces: 164

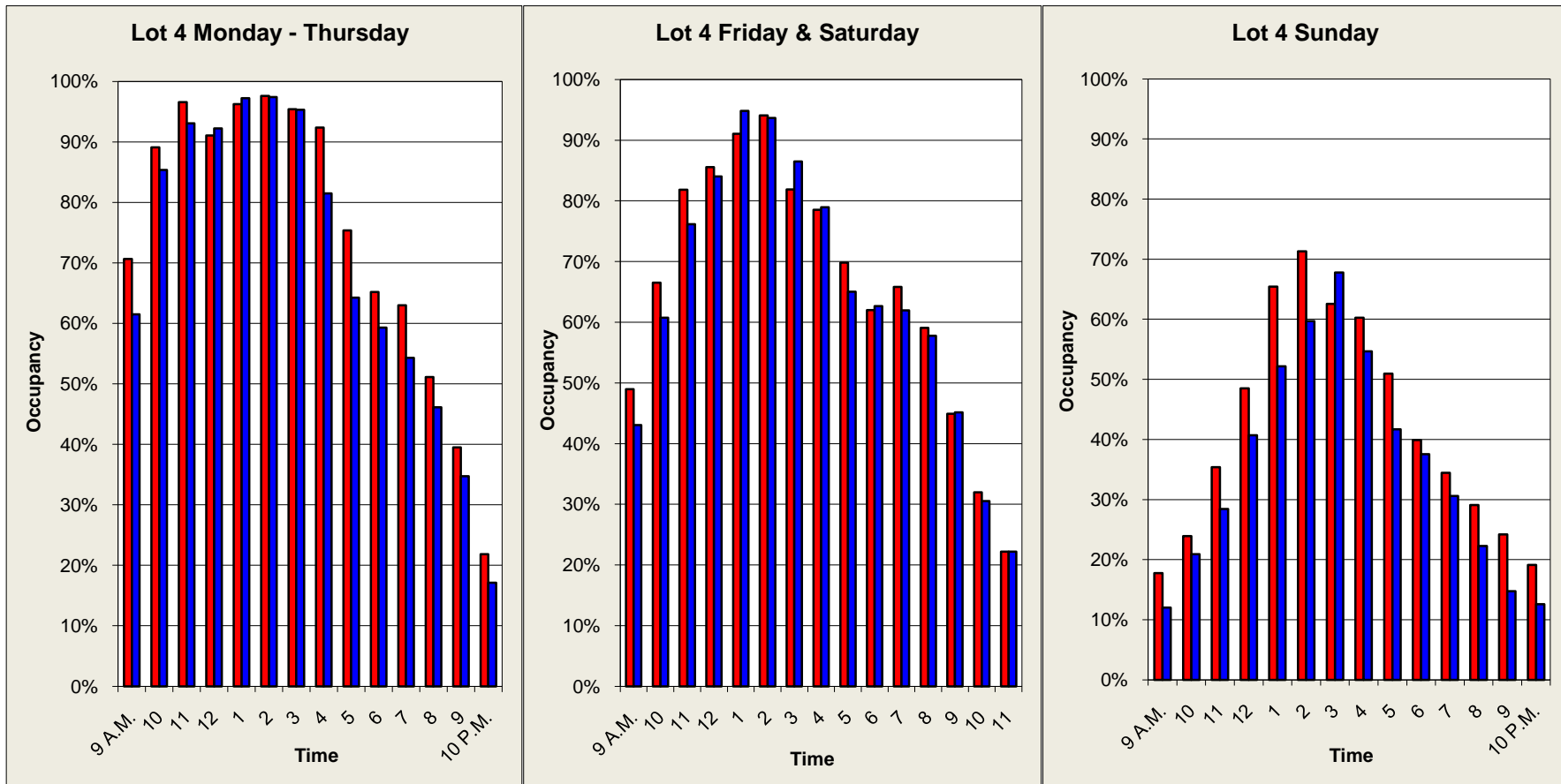
■ 2013 ■ 2012



Quarterly Occupancy Survey
2013 vs. 2012, January - March

Lot 4
Spaces: 122

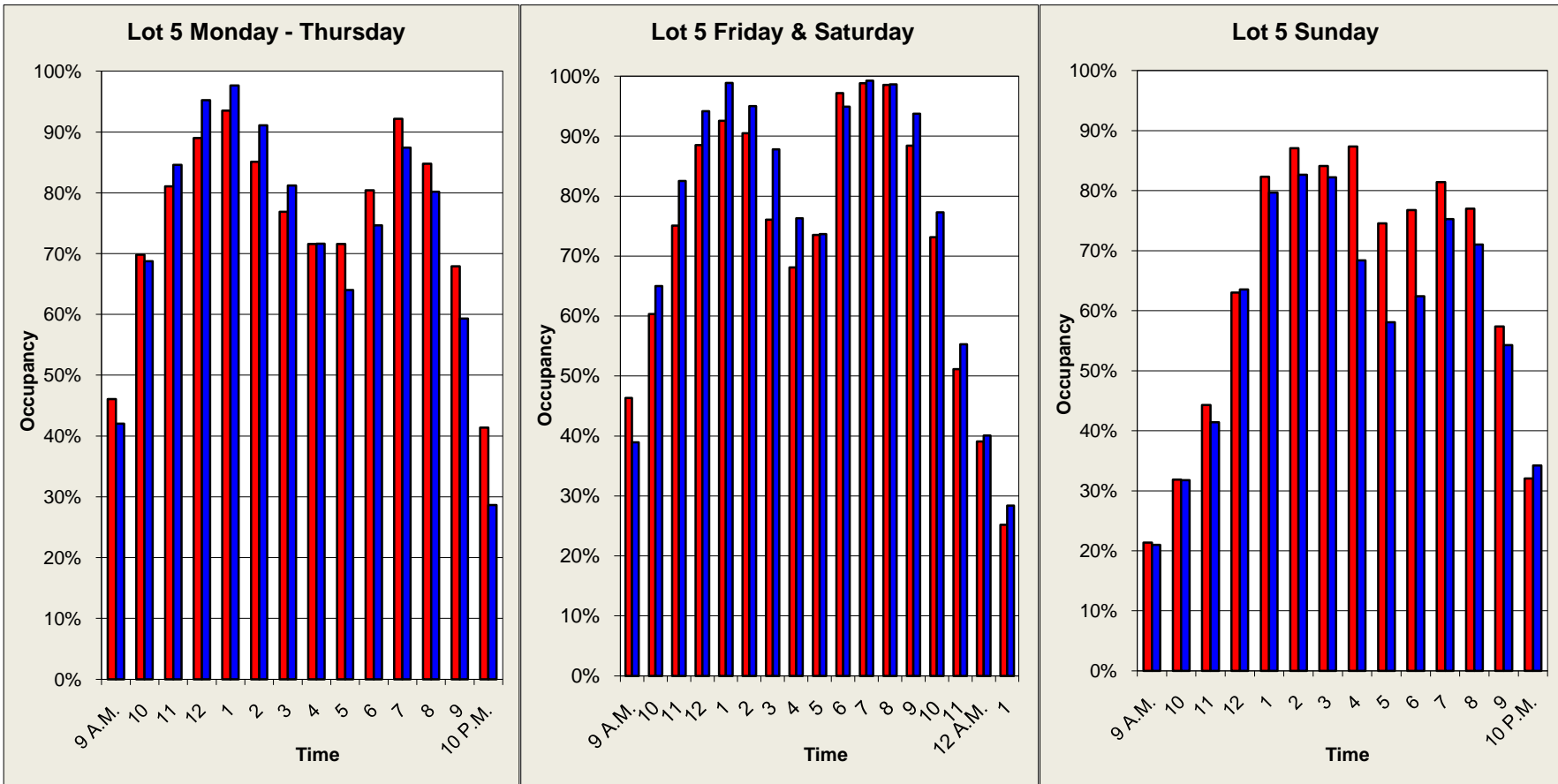
■ 2013 ■ 2012



Quarterly Occupancy Survey
2013 vs. 2012, January - March

Lot 5
Spaces: 192

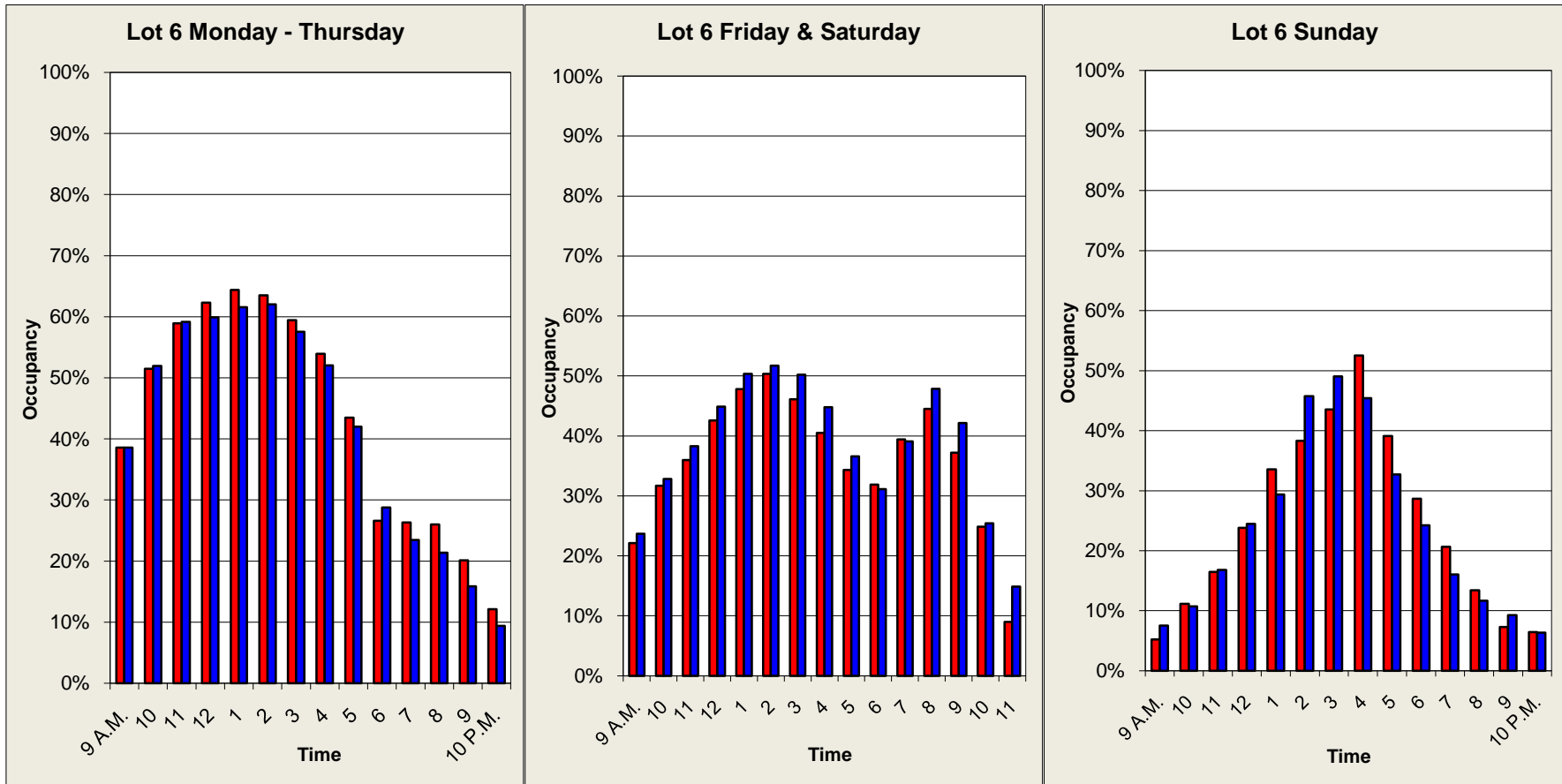
■ 2013 ■ 2012



Quarterly Occupancy Survey
2013 vs. 2012, January - March

Lot 6
Spaces: 565

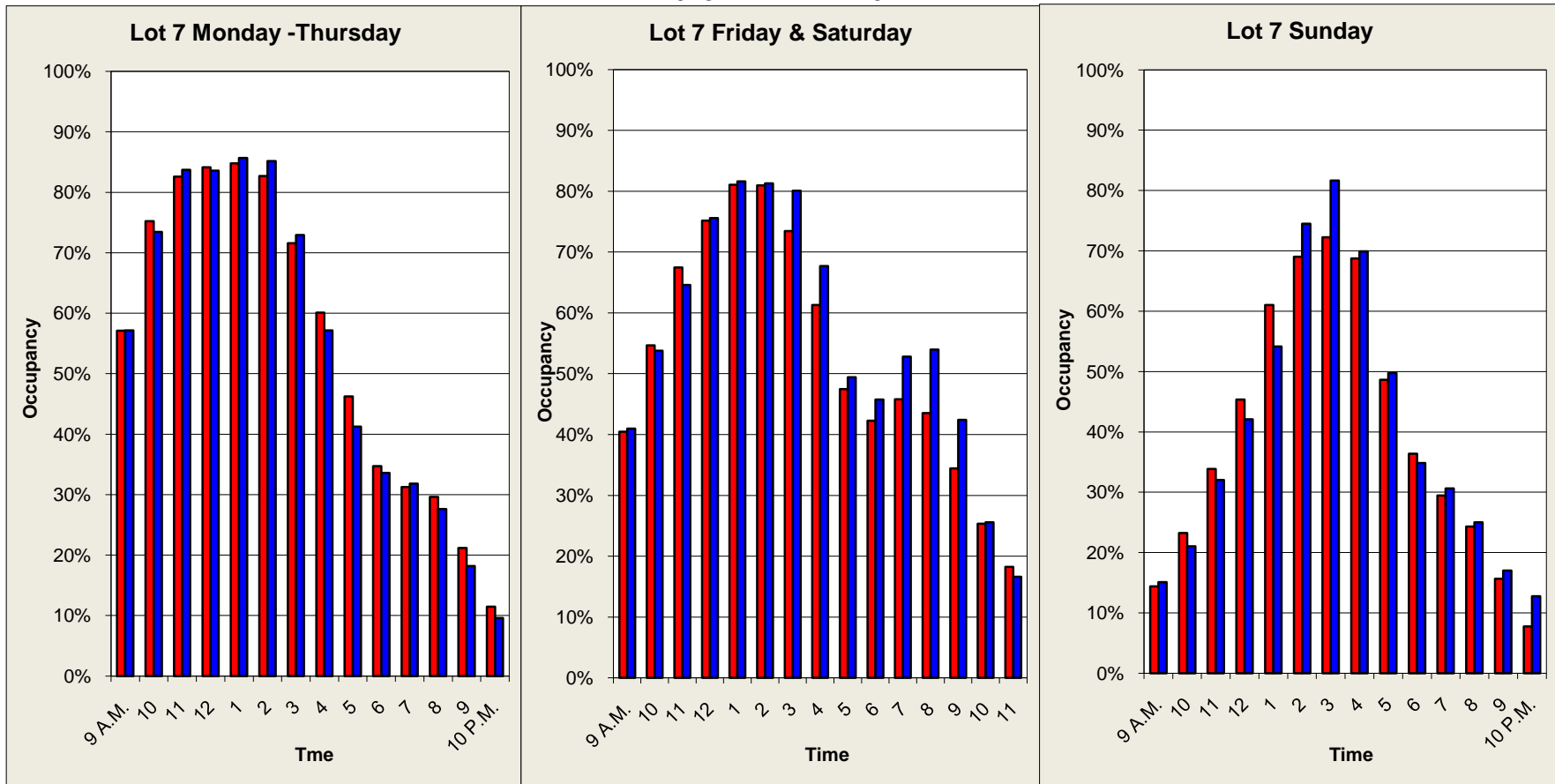
■ 2013 ■ 2012



Quarterly Occupancy Survey
2013 vs. 2012, January - March

Lot 7
Spaces: 266

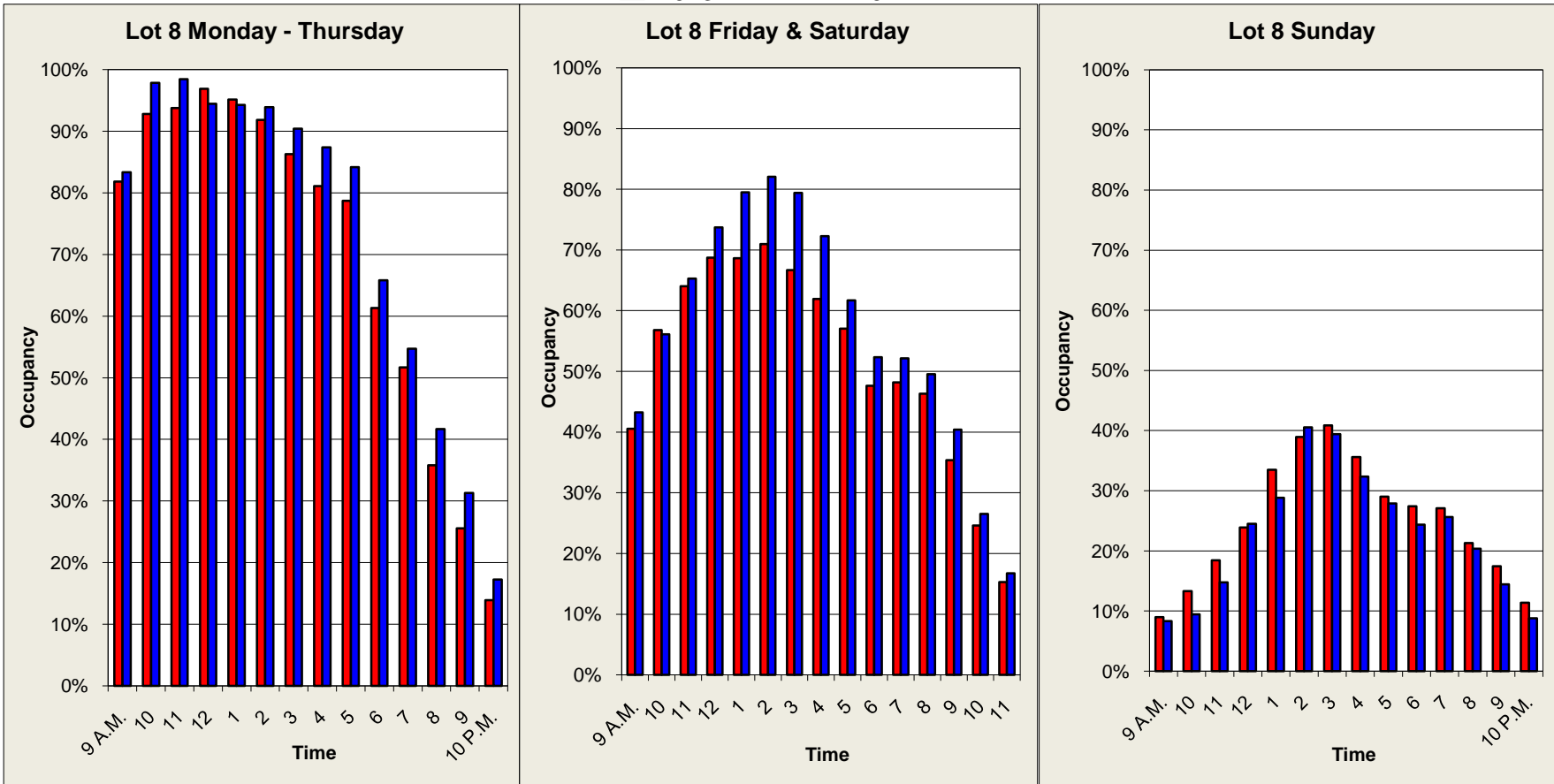
2013 2012



Quarterly Occupancy Survey
2013 vs. 2012, January - March

Lot 8
Spaces: 104

■ 2013 ■ 2012

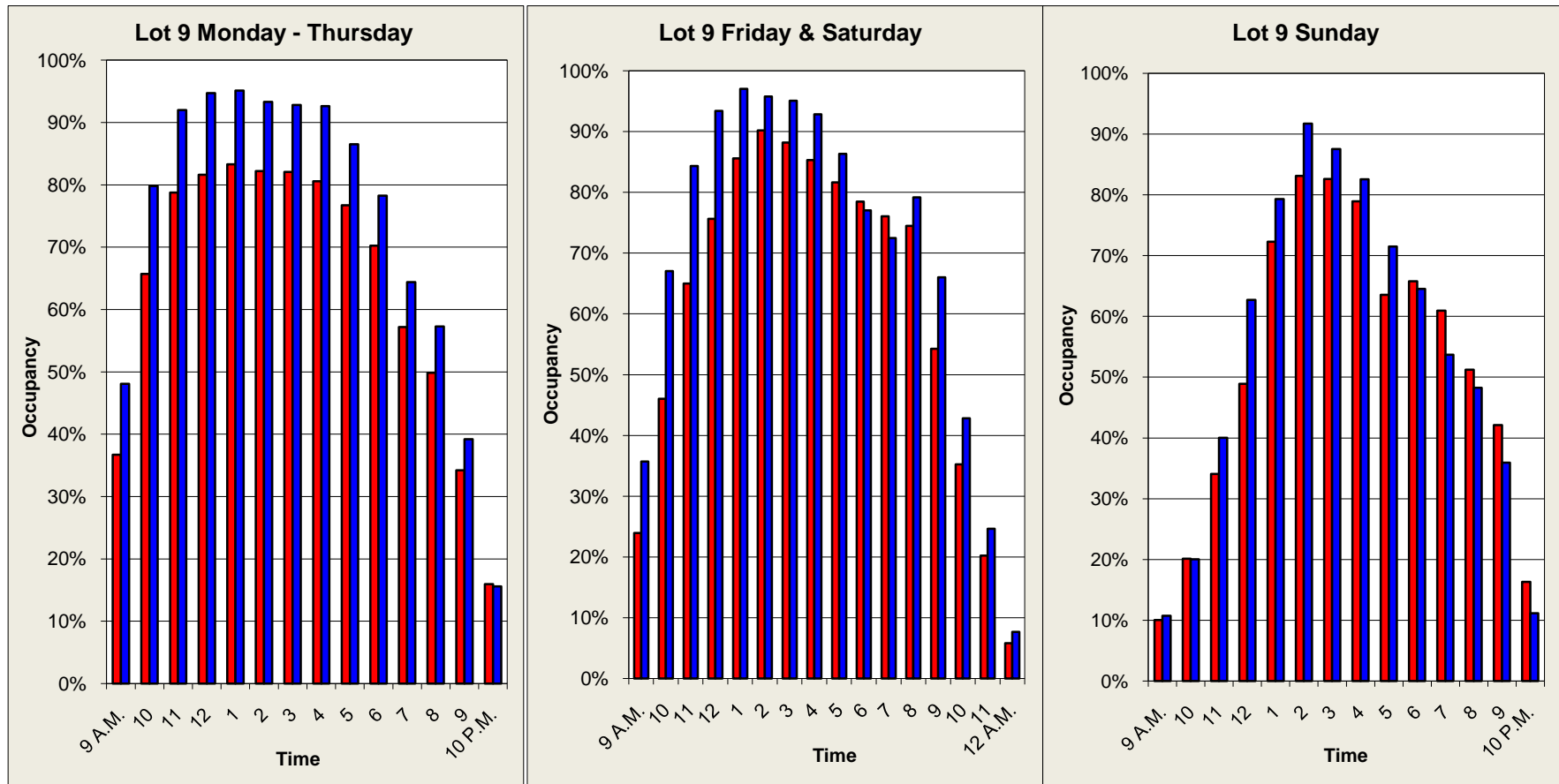


Quarterly Occupancy Survey
2013 vs. 2012, January - March

Lot 9

Spaces: 231 (Excluding 26 Basement Spaces)

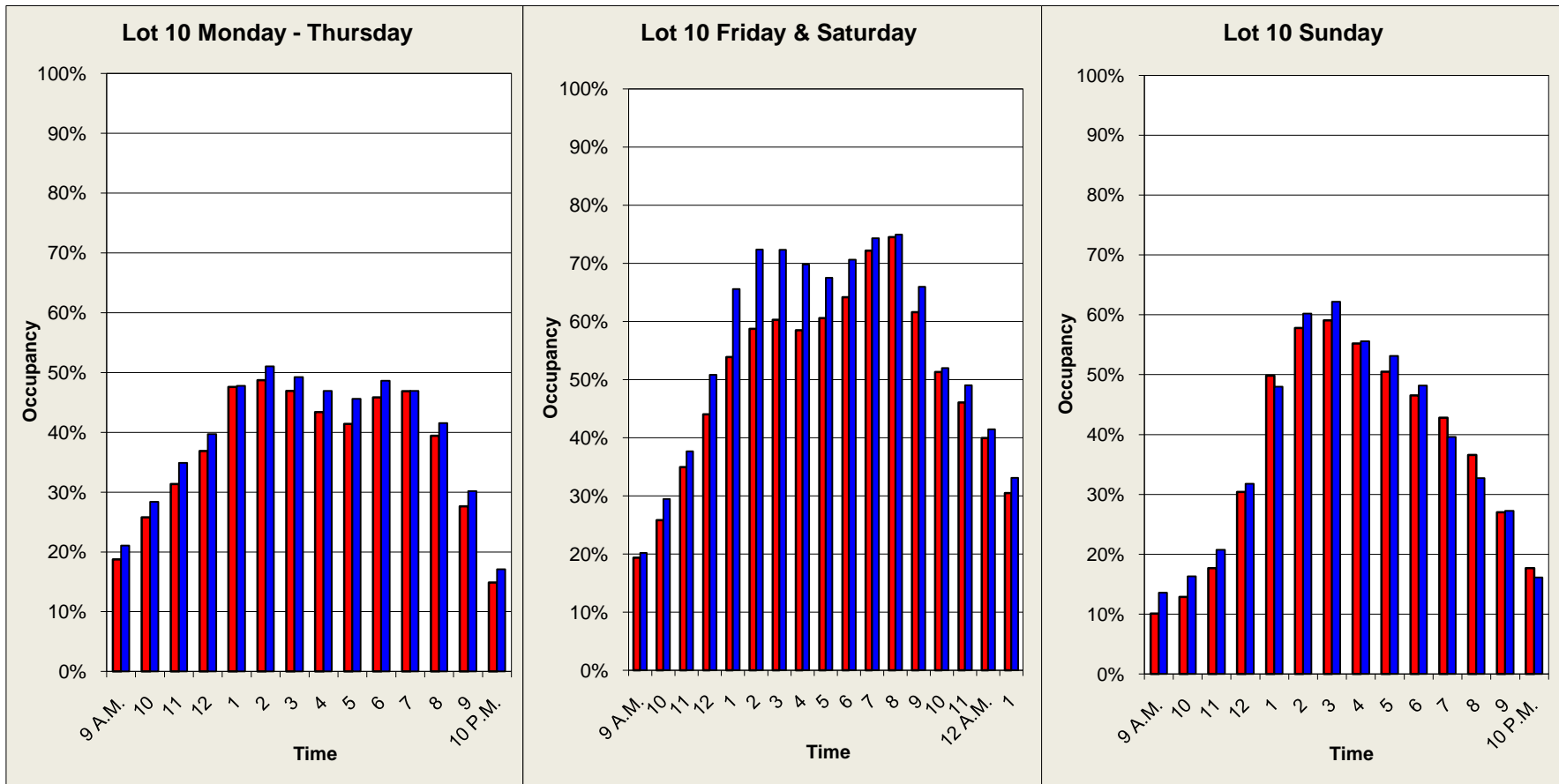
2013 2012



Quarterly Occupancy Survey
2013 vs. 2012, January - March

Lot 10
Spaces: 546

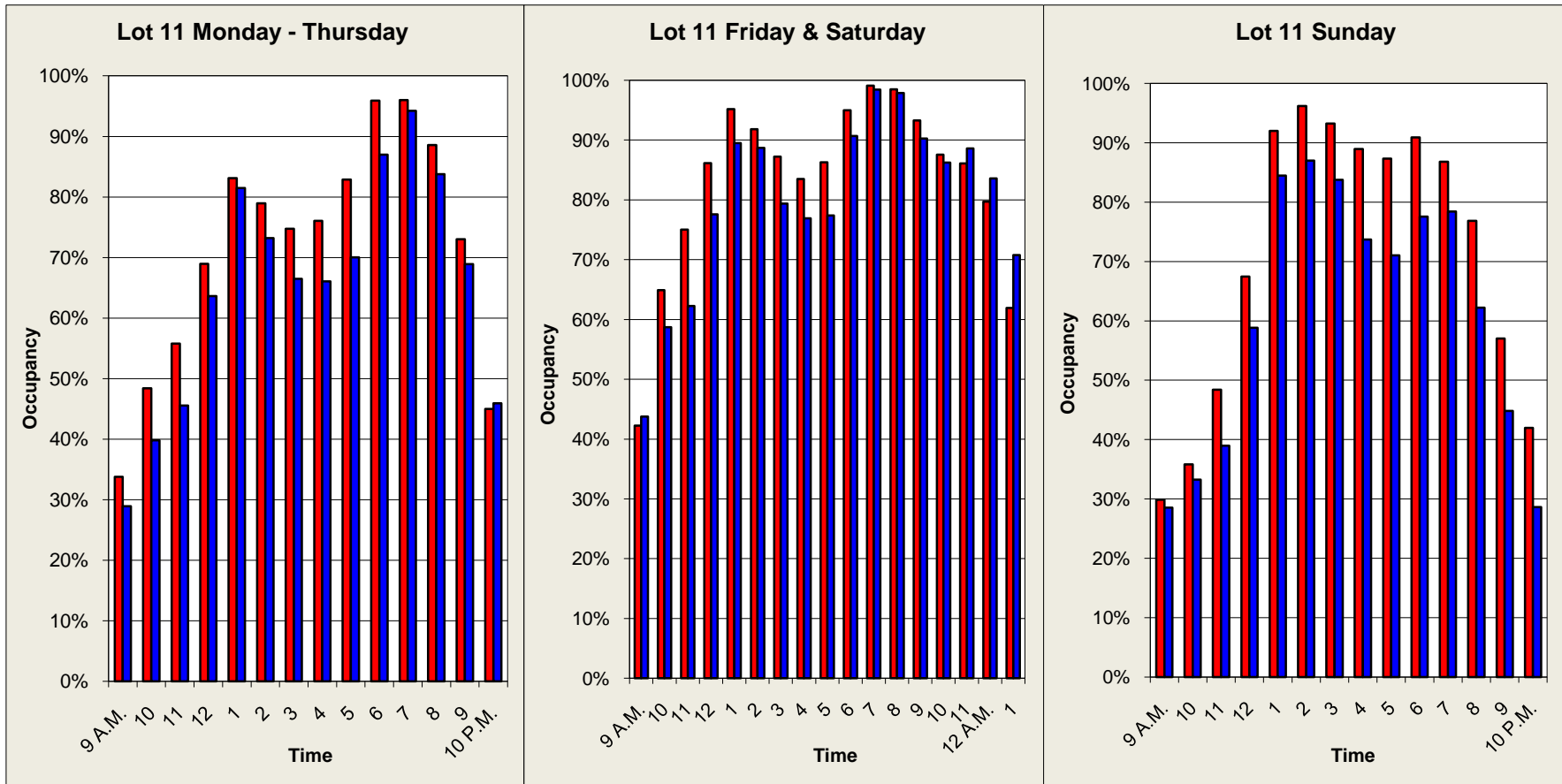
2013 2012



Quarterly Occupancy Survey
2013 vs. 2012, January - March

Lot 11
Spaces: 187

■ 2013 ■ 2012

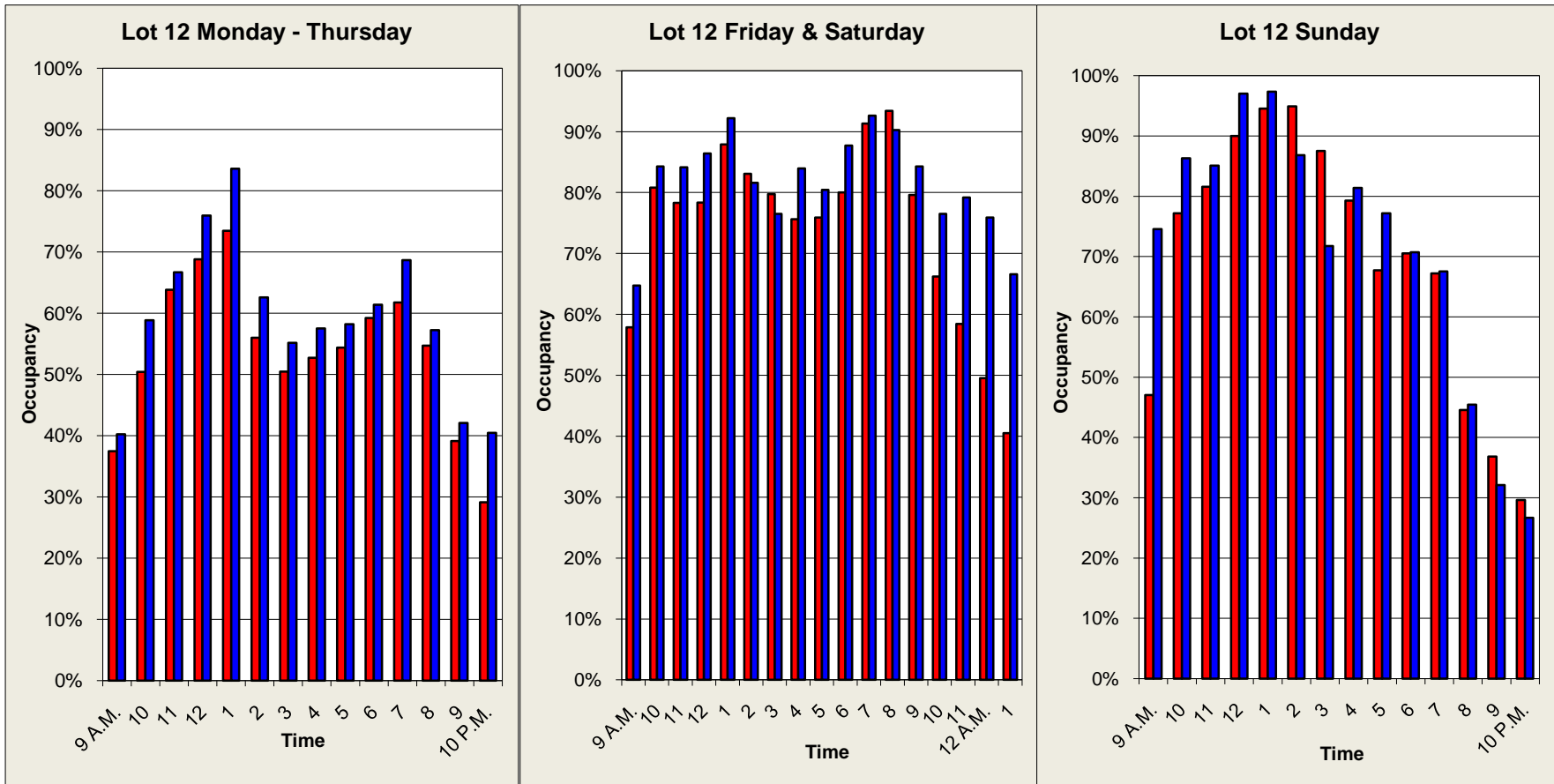


Quarterly Occupancy Survey
2013 vs. 2012, January - March

Lot 12

Spaces: 95

■ 2013 ■ 2012



Quarterly Occupancy Survey
2013 vs. 2012, January - March

Lot 13
Spaces: 568

2013 2012

