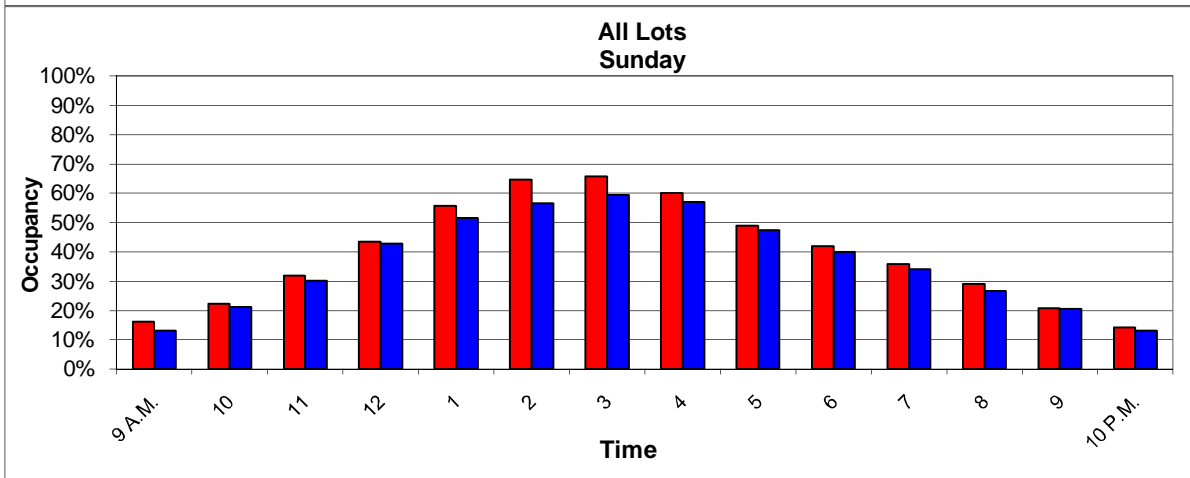
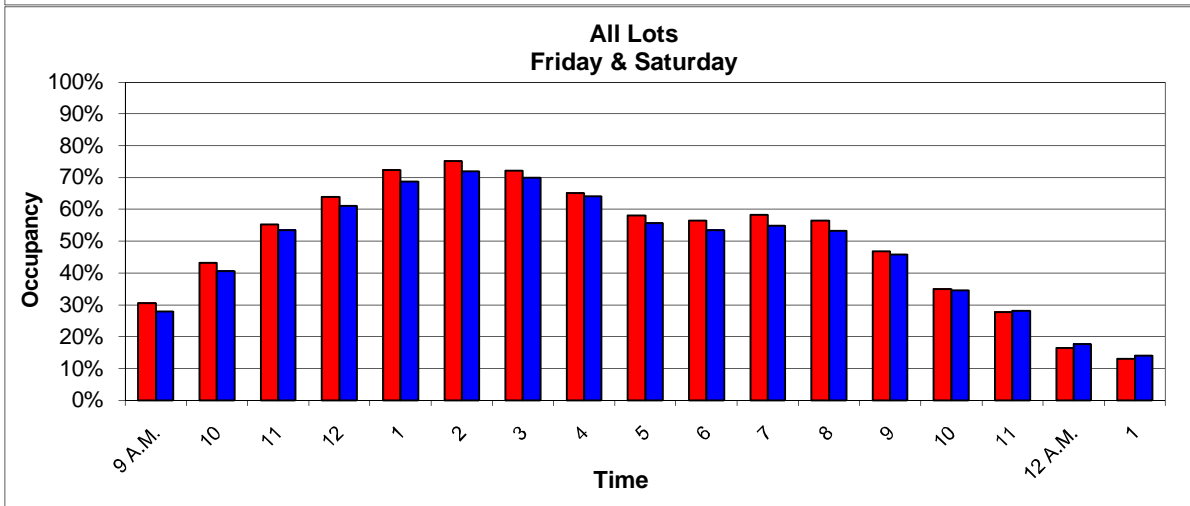
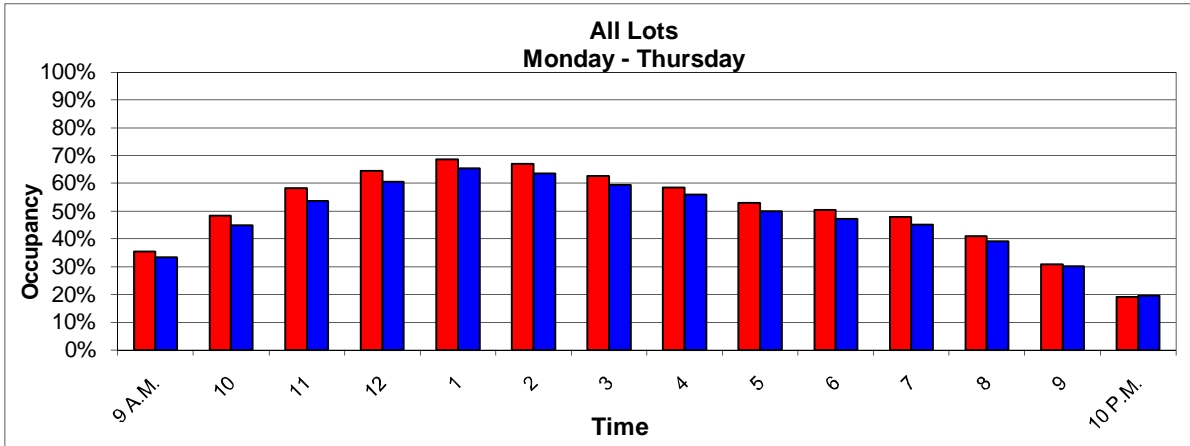


# Quarterly Occupancy Survey



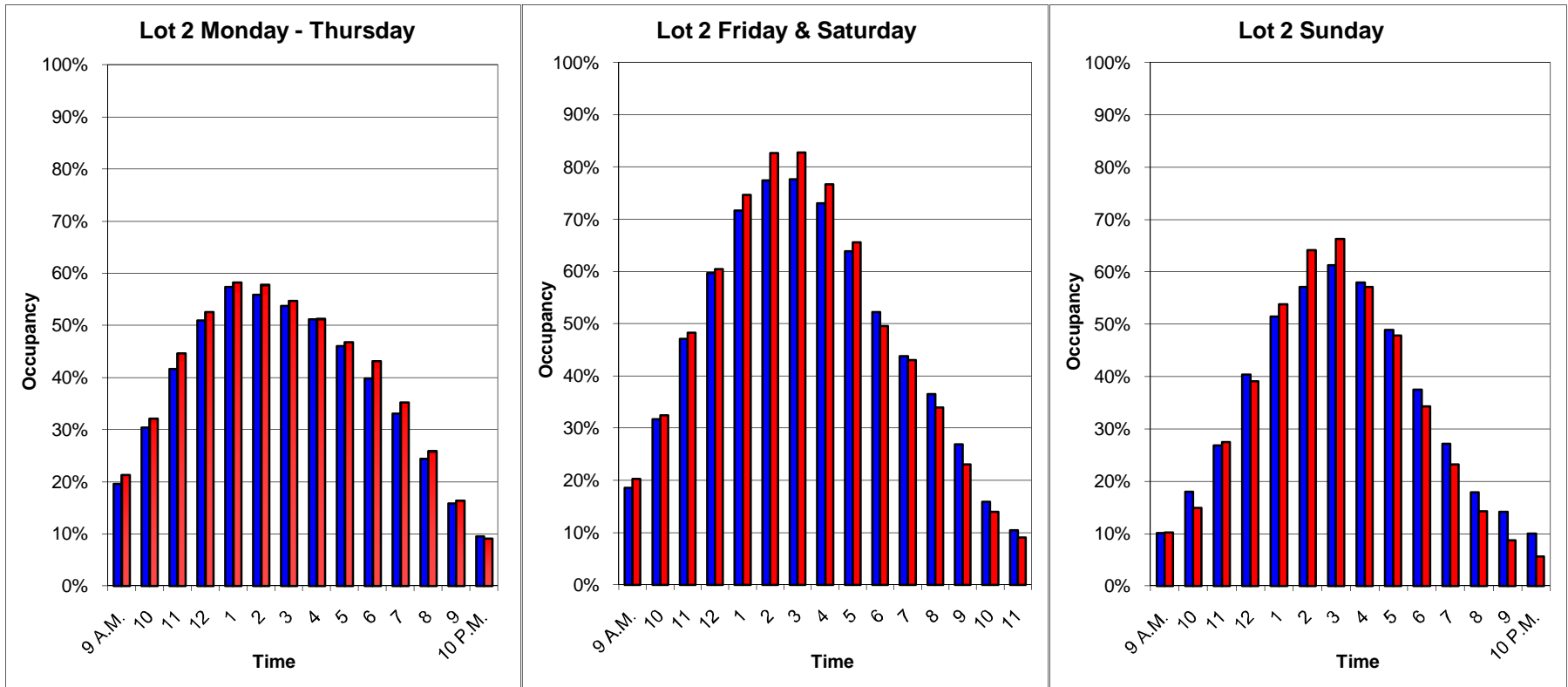
**2011 vs. 2010**  
**October - December**

**Parking System Occupancy Graphs**  
**Based on 3200 Total Spaces**  
**2011 vs. 2010, OCT - DEC**  
■ 2011      ■ 2010



**Lot 2 Occupancy Graphs  
2010 vs. 2011, OCT - DEC  
Based on 568 Total Spaces  
Active Permits: 77**

■ 2010                      ■ 2011  
Active Permits: 77



**Lot 3 Occupancy Graphs  
2010 vs. 2011, OCT - DEC  
Based on 164 Total Spaces  
Active Permits: 7**

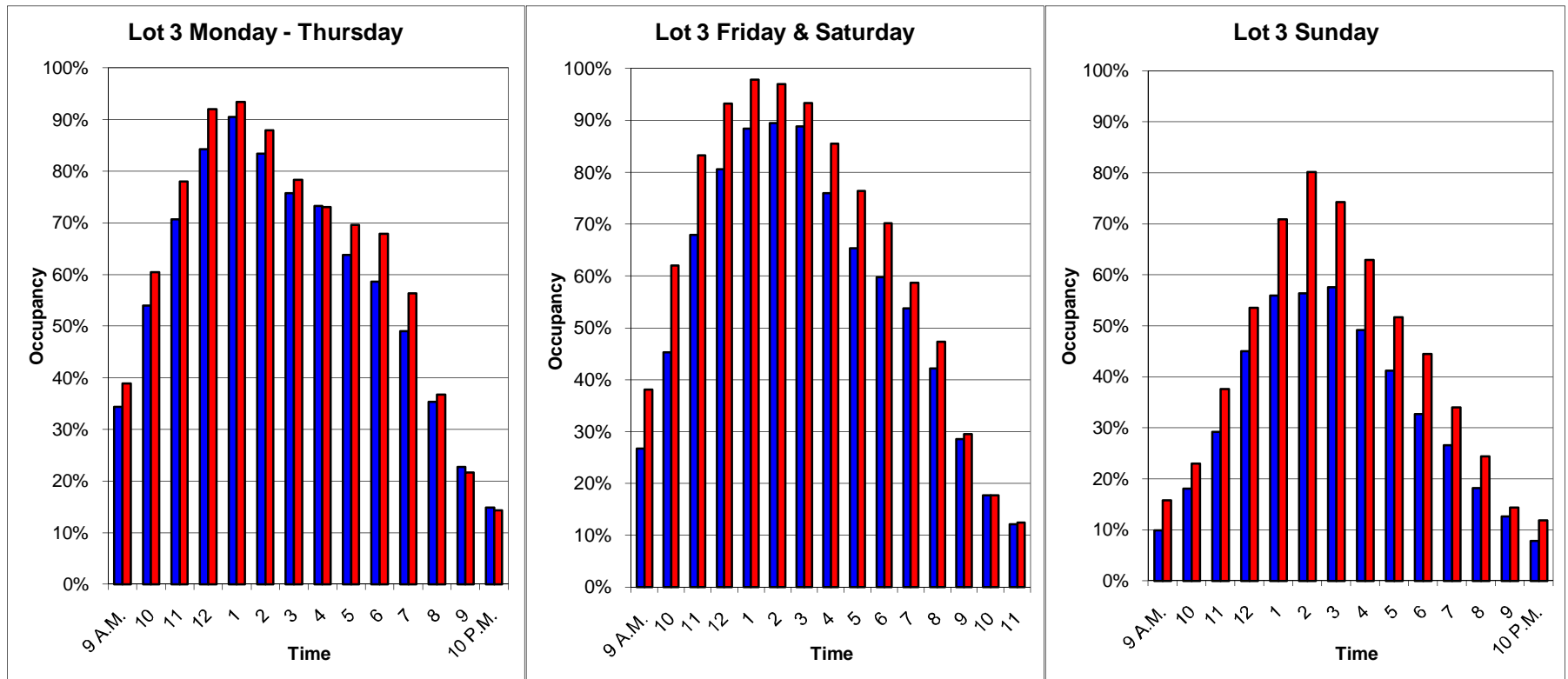


**2010**



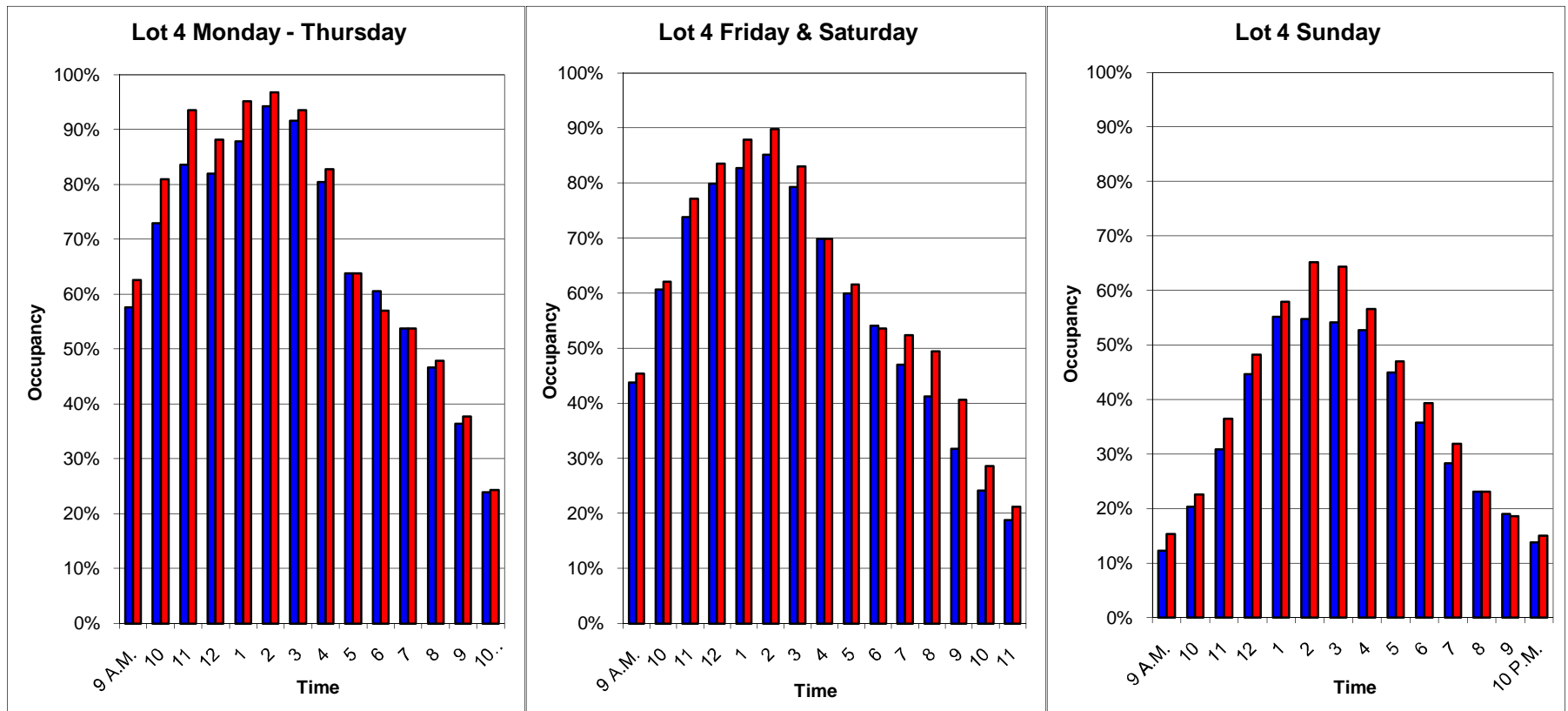
**2011**

**Active Permits: 7**



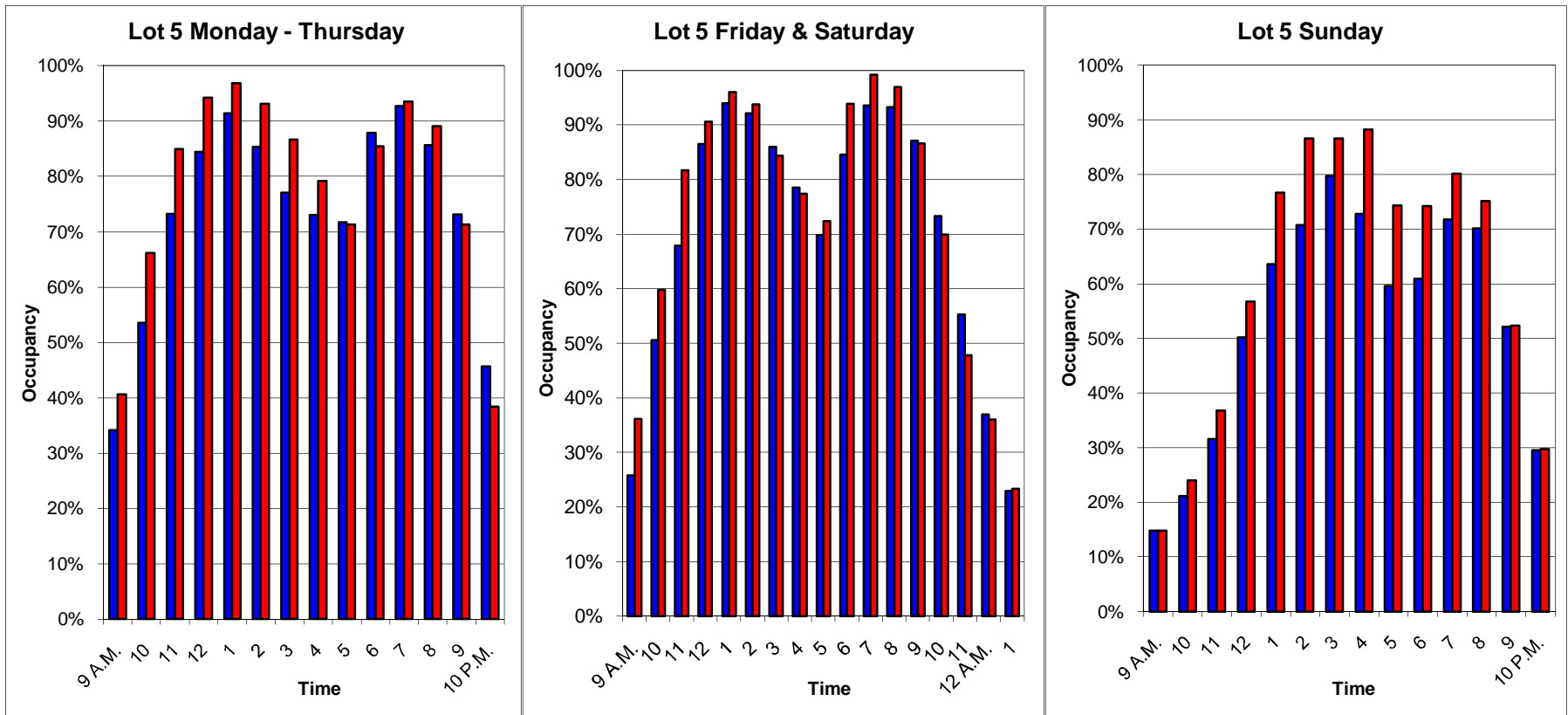
# Lot 4 Occupancy Graphs 2010 vs. 2011, OCT - DEC Based on 122 Total Spaces

■ 2010      ■ 2011  
**Active Permits: 6**



# Lot 5 Occupancy Graphs 2010 vs. 2011, OCT - DEC Based on 192 Total Spaces

■ 2010      ■ 2011  
**Active Permits: 3**

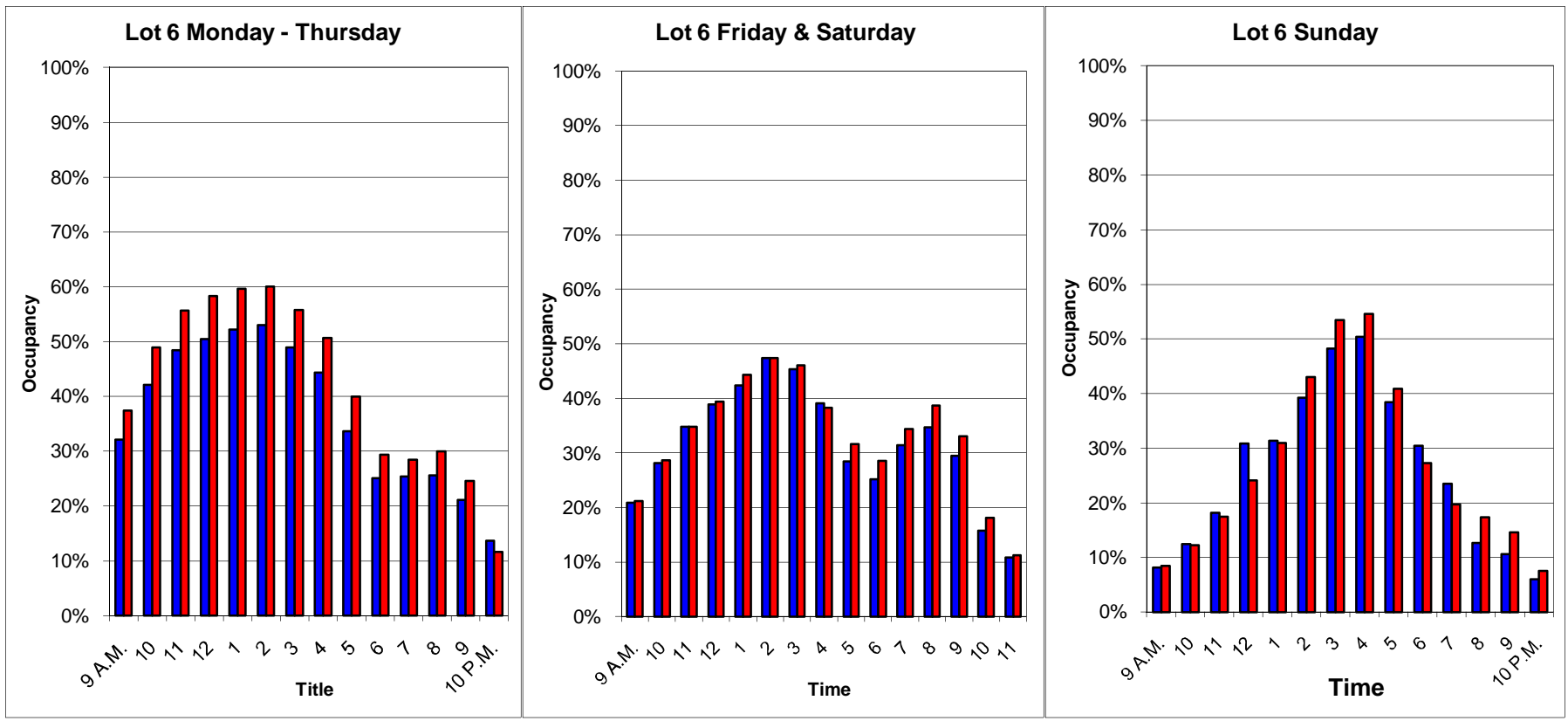


# Lot 6 Occupancy Graphs

## 2010 vs. 2011, OCT - DEC

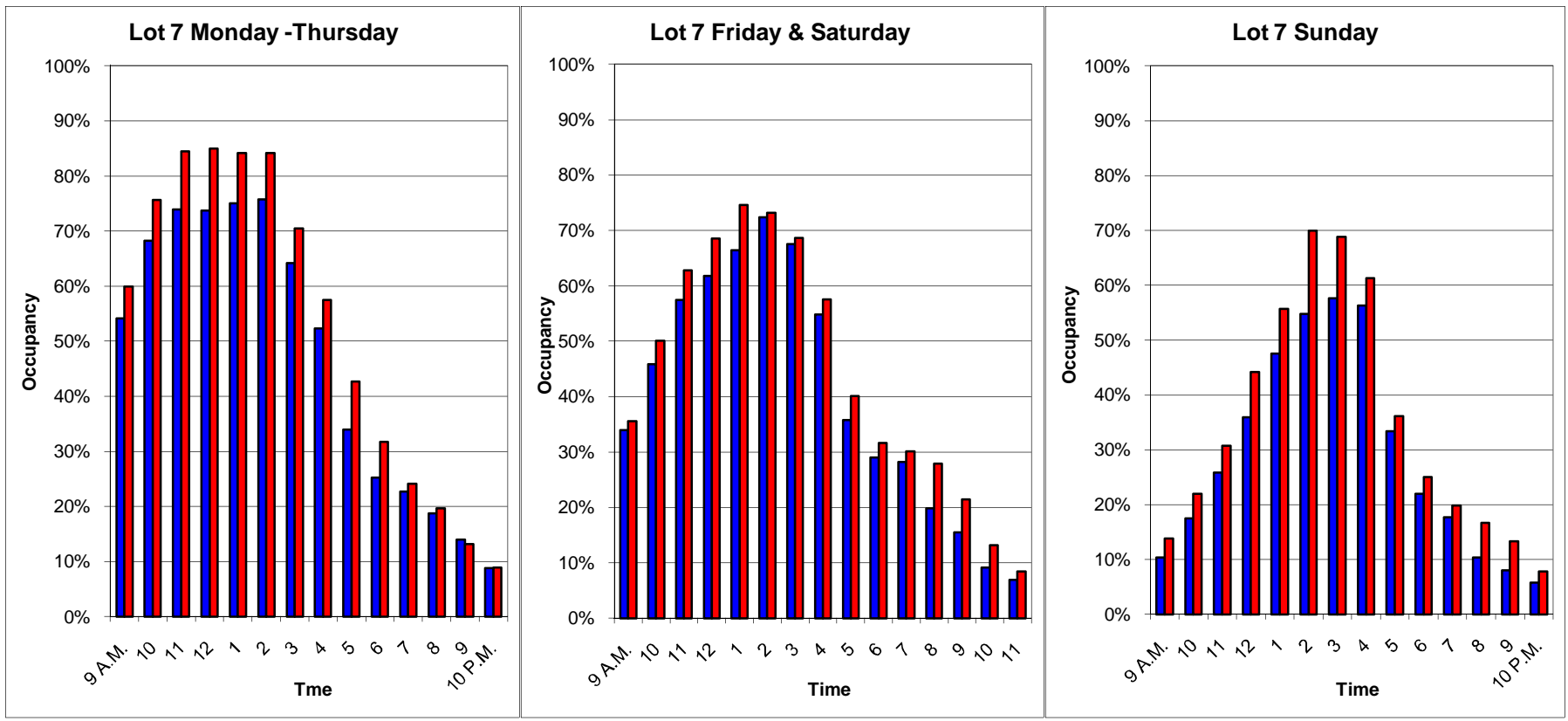
### Based on 565 Total Spaces

■ 2010      ■ 2011  
**Active Permits: 227**



## Lot 7 Occupancy Graphs 2010 vs. 2011, OCT - DEC Based on 266 Total Spaces

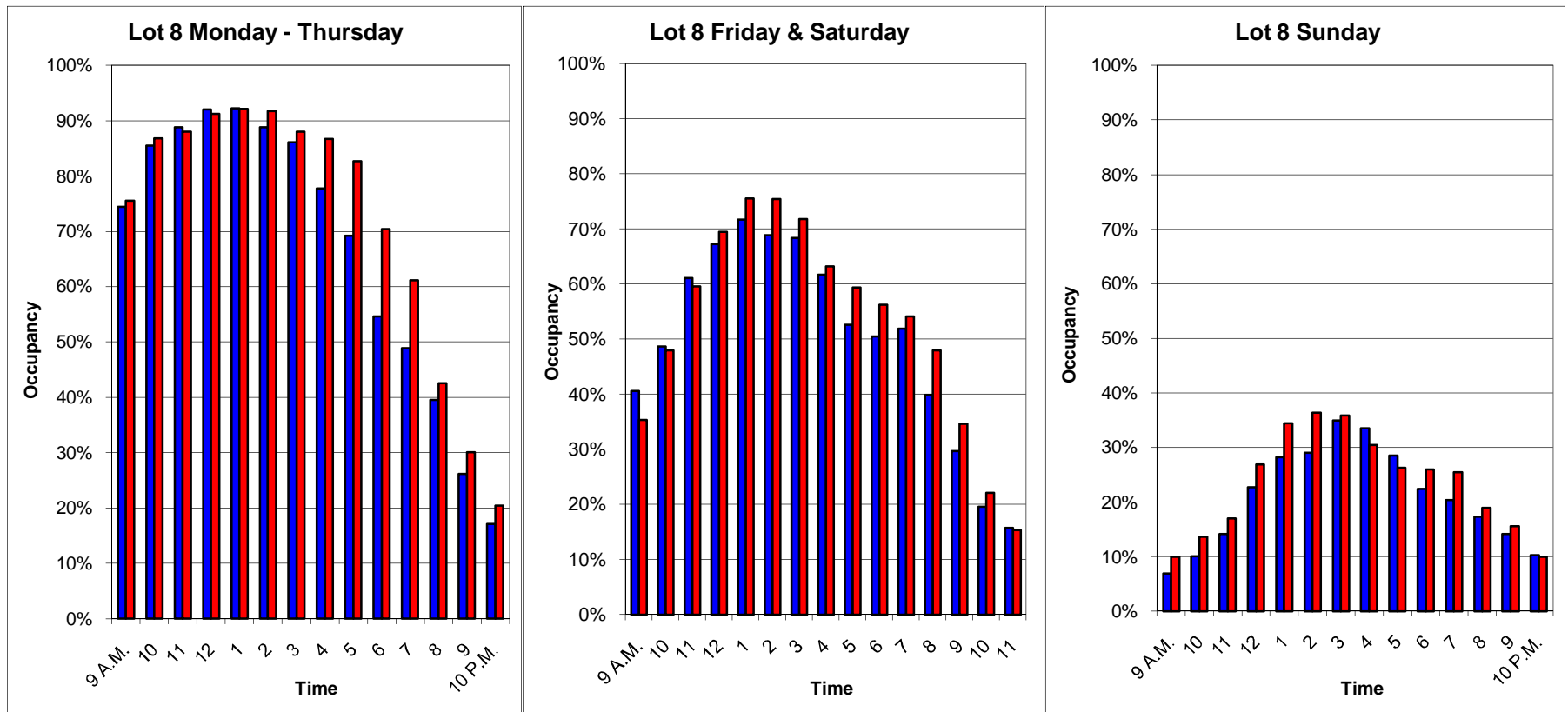
■ 2010      ■ 2011  
**Active Permits: 11**





# Lot 8 Occupancy Graphs 2010 vs. 2011, OCT - DEC Based on 104 Total Spaces

■ 2010      ■ 2011  
**Active Permits: 0**



# Lot 9 Occupancy Graphs

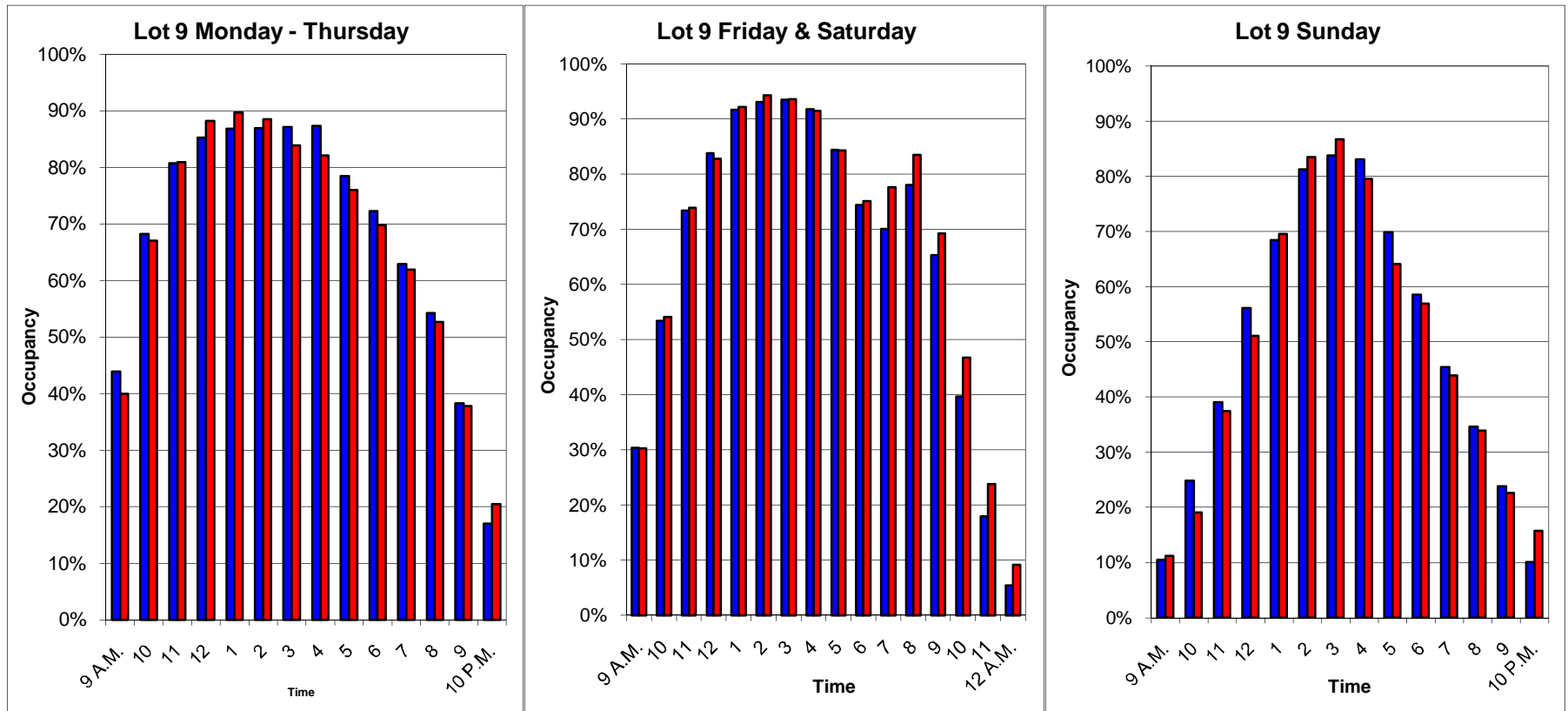
## 2010 vs. 2011, OCT - DEC

### Based on 231 Total Spaces

■ 2010      ■ 2011

\*\* DOES NOT INCLUDE 26 SPACES IN BASEMENT \*\*

**Active Permits: 26**

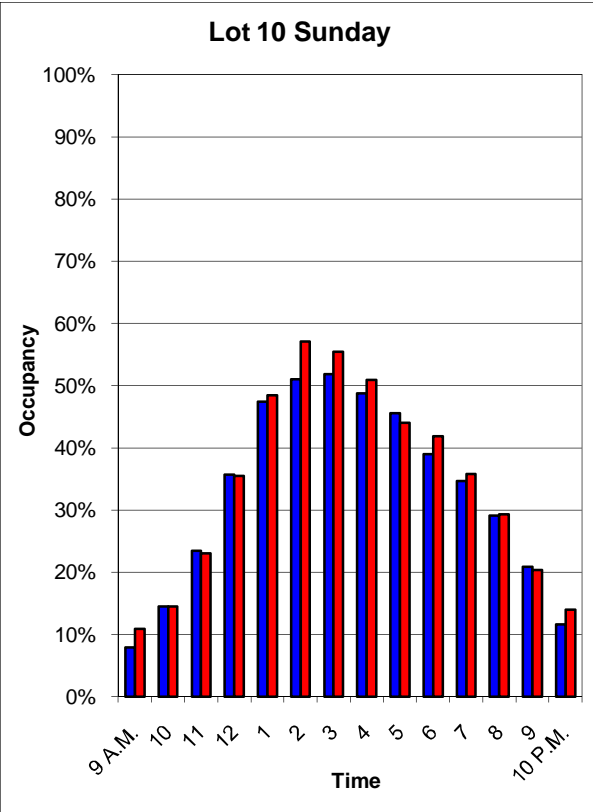
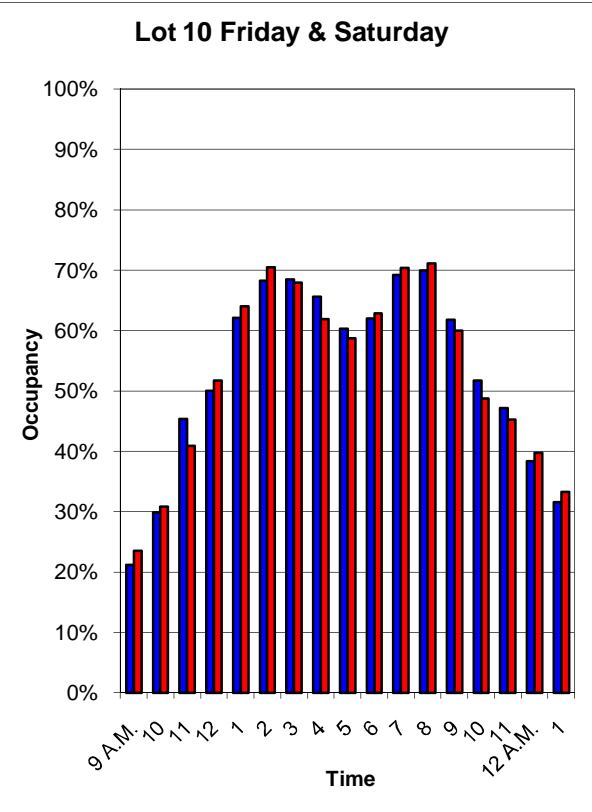
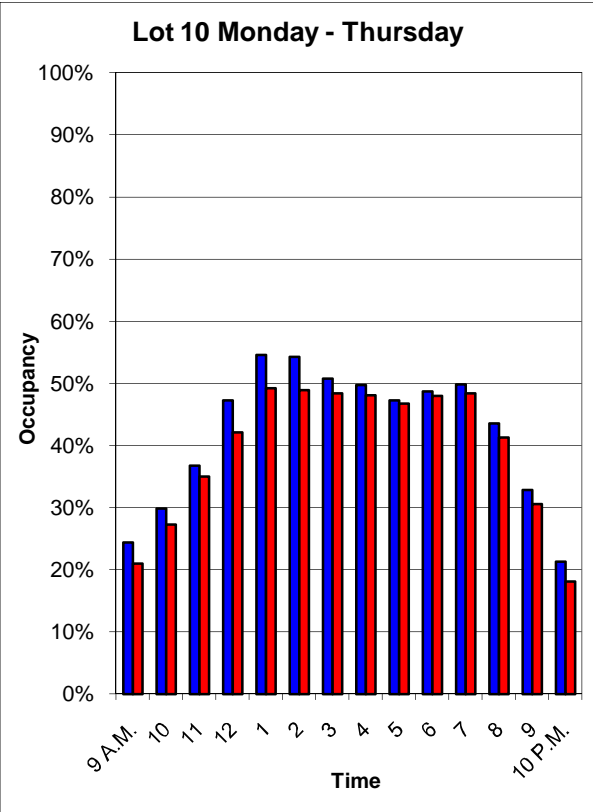


# Lot 10 Occupancy Graphs

## 2010 vs. 2011, OCT - DEC

### Based on 546 Total Spaces

■ 2010      ■ 2011  
**Active Permits: 187**

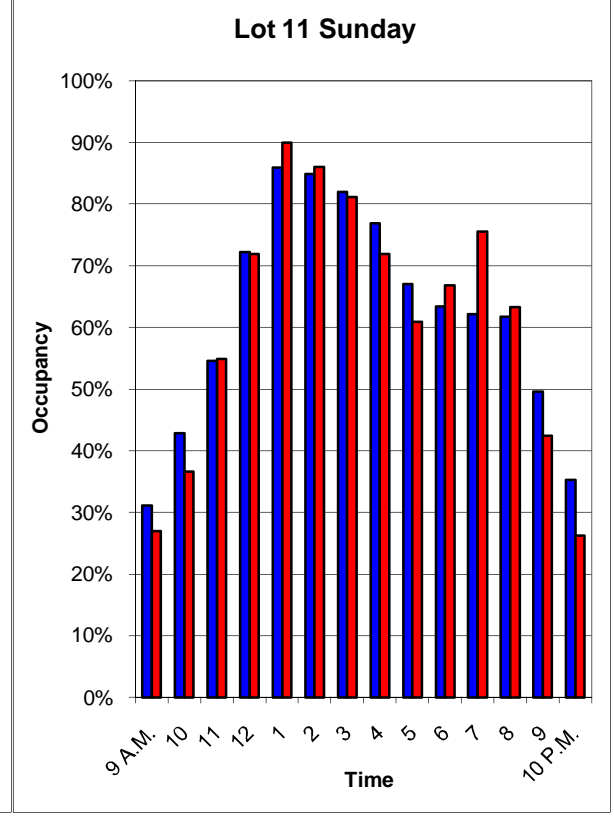
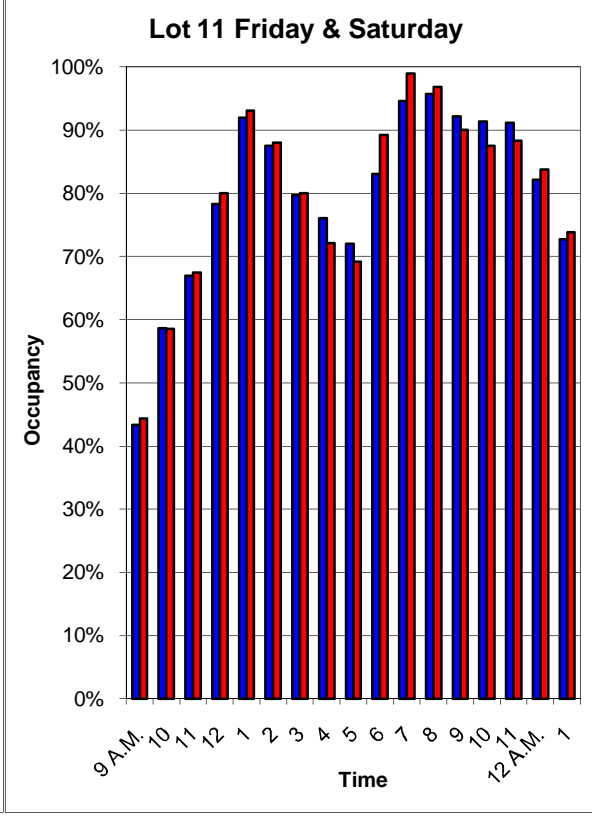
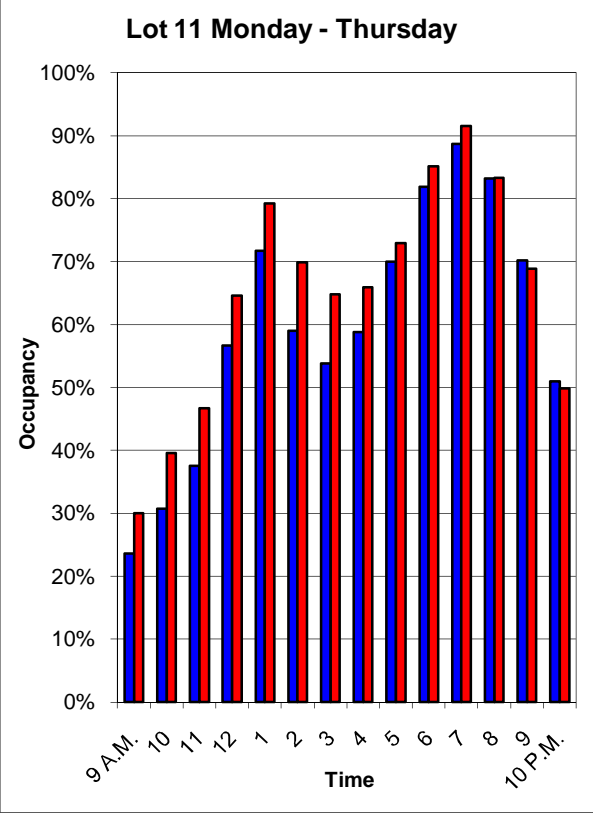


# Lot 11 Occupancy Graphs

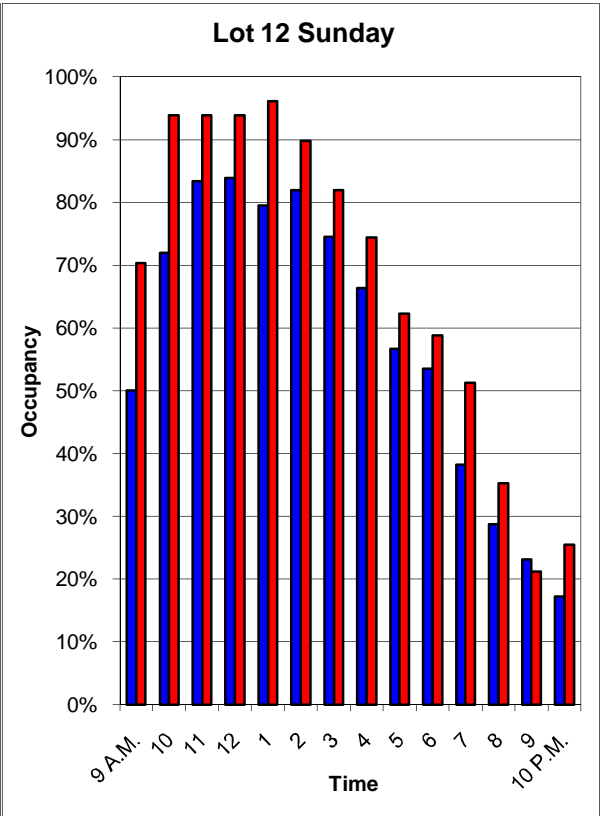
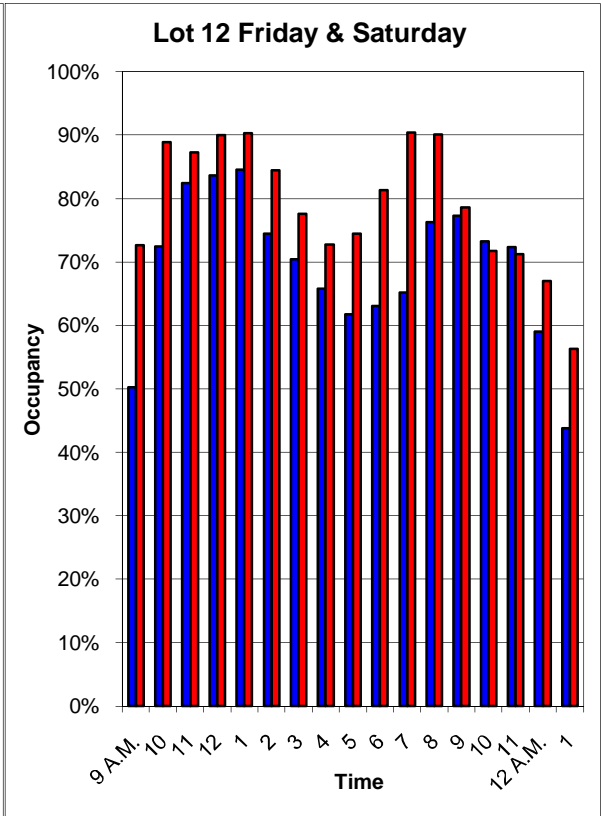
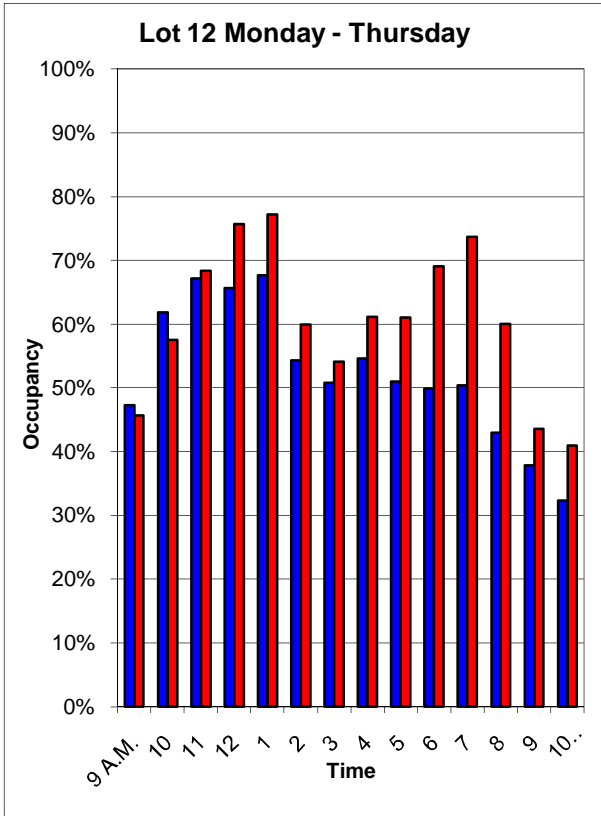
## 2010 vs. 2011, OCT - DEC

Based on 187 Total Spaces

■ 2010      ■ 2011  
 Active Permits: 13



**Lot 12 Occupancy Graphs**  
**2010 vs. 2011, OCT - DEC**  
**Based on 95 Total Spaces**  
■ **2010**      ■ **2011**  
**Active Permits: 4**



**Lot 13 Occupancy Graphs**  
**2010 vs. 2011, OCT - DEC**  
**Based on 138 Total Spaces**  
■ **2010**      ■ **2011**  
**Active Permits: 4**

