



COMMUNITY PROFILE

Directory of City Officials

Cathy Murillo
Mayor

Jason Dominguez
Councilmember

Meagan Harmon
Councilmember

Oscar Gutierrez
Councilmember

Randy Rowse
Councilmember

Eric Friedman
Councilmember

Kristen Sneddon
Councilmember

Paul A. Casey
City Administrator, City Clerk,
and City Treasurer

Ariel Pierre Calonne
City Attorney

Pamela Antil
Assistant City Administrator

Vacant
Administrative Services Director

Jessica Cadiante
Library Director

Henry Thompson
Airport Director

Jill E. Zachary
Parks and Recreation Director

George R. Buell
Community Development Director

Lori Luhnnow
Police Chief

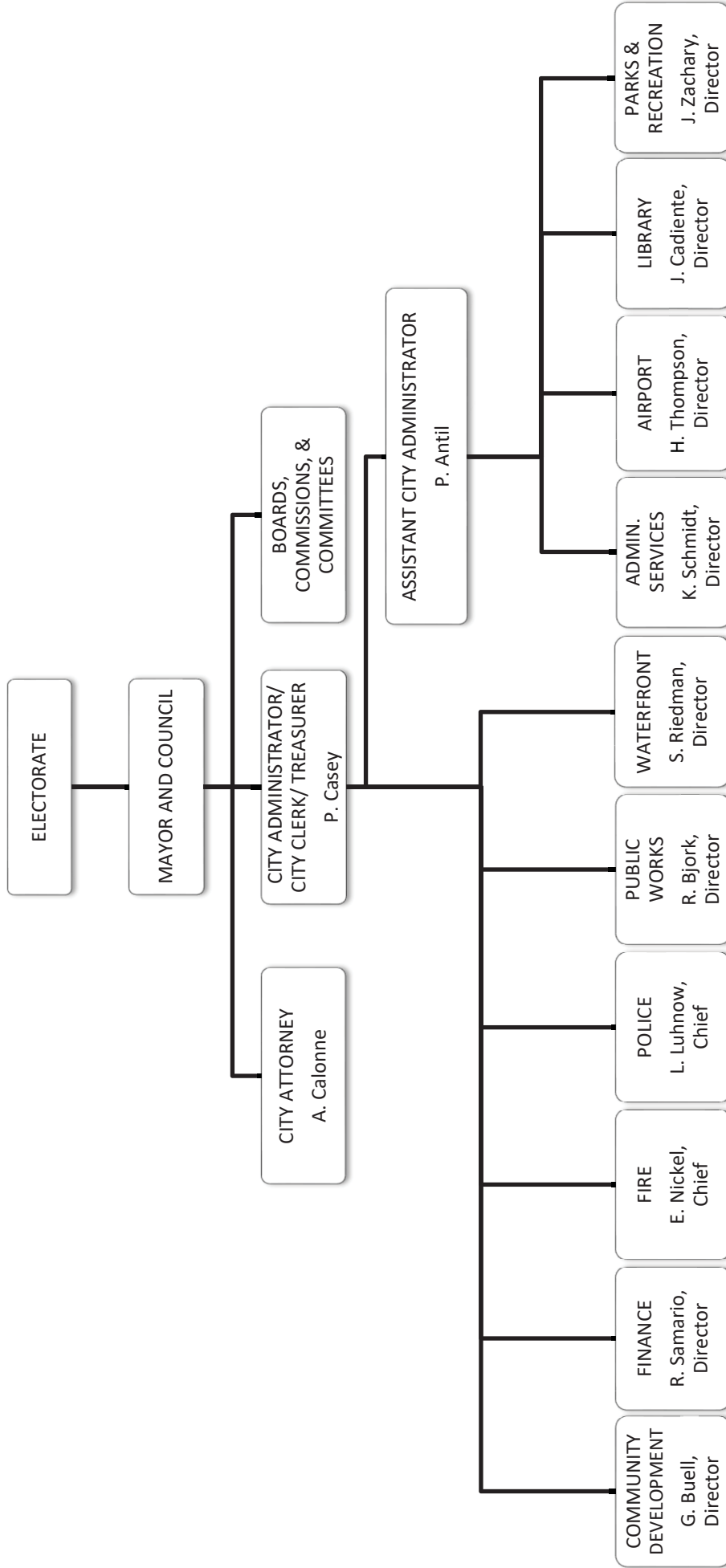
Robert Samario
Finance Director

Rebecca J. Bjork
Public Works Director

Eric Nickel
Fire Chief

Scott Riedman
Waterfront Director

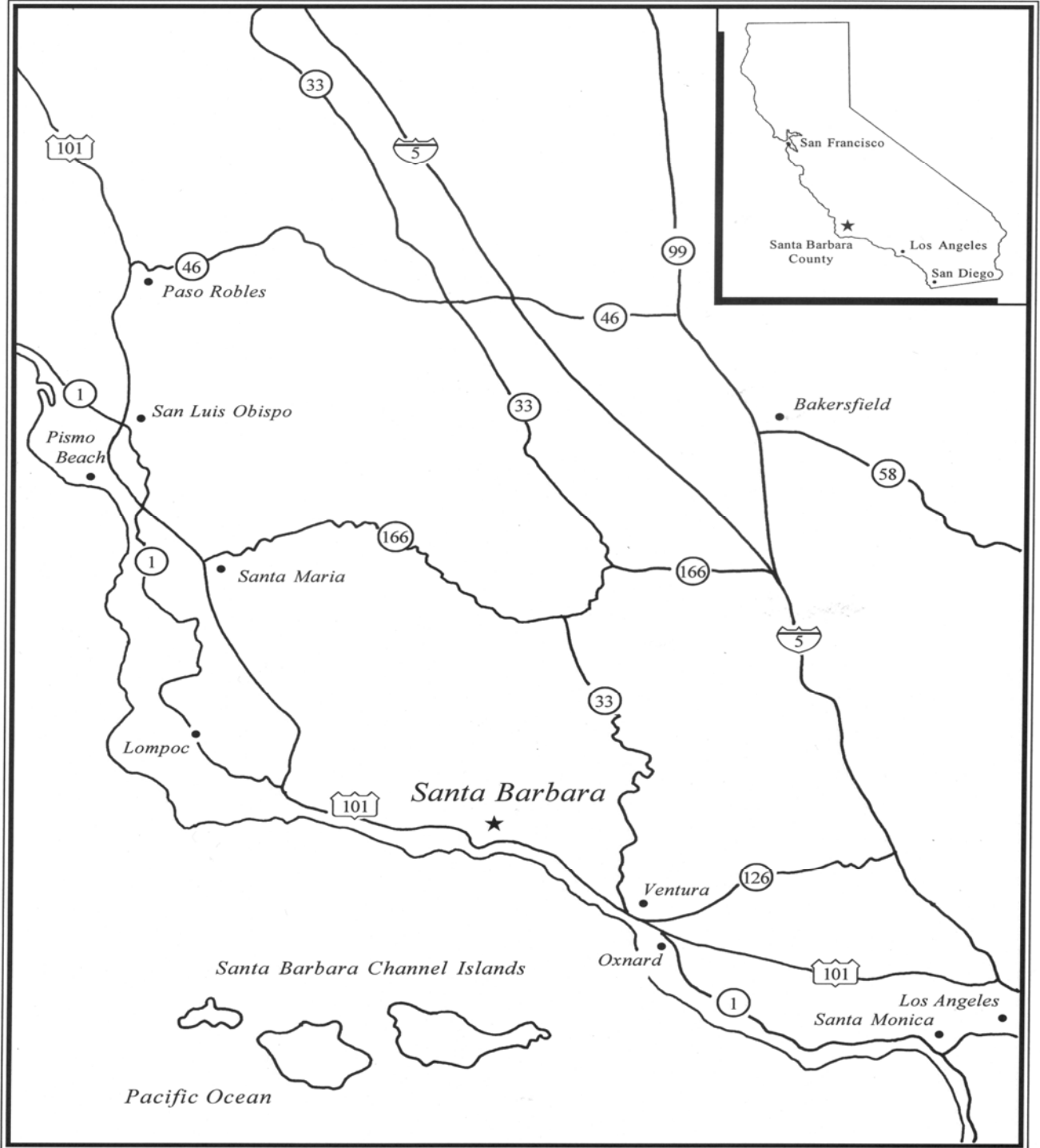
CITY OF SANTA BARBARA ORGANIZATIONAL CHART





COMMUNITY PROFILE

Santa Barbara Area Map





COMMUNITY PROFILE

About the City of Santa Barbara

The City of Santa Barbara is located approximately 90 miles north of Los Angeles off of U.S. Highway 101, and is geographically sheltered by mountains on the north and the Pacific Ocean on the south. The City of Goleta and the unincorporated area of Montecito border the City on the west and east, respectively.

Until the late 1700's, the area currently known as "Santa Barbara" was occupied by the Chumash Indians. The Chumash lived in small villages along the coast and on the Channel Islands, living comfortably for thousands of years thanks to the abundance of wildlife and natural resources.

In 1542, Portuguese explorer Juan Cabrillo entered the Channel and claimed the land for Spain. In 1602, three frigates under the command of Sebastian Vizcaino entered the Santa Barbara Channel. One of the Carmelite friars on board named the bay and nearby shore after Saint Barbara.

In 1782, a group led by Father Junipero Serra, Captain Jose Ortigas, and Governor Felipe de Neve established a military presidio and, three years later, a mission. Spain governed the area until 1822, when California became a Mexican territory. Just 24 years later, in 1846, Colonel John Fremont and his soldiers took Santa Barbara for the United States.

The City of Santa Barbara (the primary government) was incorporated on August 26, 1850. The City is a charter city under the laws of the State of California and operates under a Council-Administrator form of government. The Council consists of six council members elected by district and a mayor elected at-large. The current City Charter was adopted on May 2, 1967 and provides for the following services: public safety (police and fire), construction and maintenance of highways and streets, sanitation, culture and recreation, public improvements, planning, zoning and general administration. Enterprise funds, operated in a manner similar to a private business, include water, wastewater, airport, parking, golf, and waterfront.



COMMUNITY PROFILE

Miscellaneous Statistics

General City Information:

Date of incorporation	August 26, 1850
Form of government	Council-Administrator
Land area in square miles	21.1
Miles of paved roadways	244.53
Number of traffic signals	117

Community Forest, Beaches and Gardens:

Developed Park Trees	9,300
Open space trees	30,000
Number of street trees	23,600
Number of tree species	456
Parkway and Median acres	13
Linear miles of city beaches	6.2
Community gardens	4

Airport:

Number of terminals	1
Number of commercial carriers	7
Number of ticketed passengers annually	785,819
Number of runways	3
Total airport acreage	942
Commercial / industrial acreage	87
Number of leased buildings	54
Goleta Slough Ecological Reserve wetlands acreage	400

Hospitals:

Number of hospitals	1
Number of patient beds	443

Libraries:

Number of city libraries	2
Number of county libraries	6
Total volumes	205,471
Total digital items cataloged	134,758

Municipal Water Operation:

Gallons of potable water treated and distributed annually	3,979 billion
Gallons of reclaimed water treated and distributed annually	387 million
Number of reservoirs	14
Number of pump stations	11
Number of treatment plants	3
Number of wells	8
Number of water reclamation plants	1



COMMUNITY PROFILE

Miscellaneous Statistics

Municipal Wastewater Operation:

Number of treatment plants	1
Number of lift stations	7
Gallons of water treated annually	2.26 billion

Parks and Recreation:

Park acreage	1,808
Number of developed parks	41
Number of open space parks	13
Number of park playgrounds	23
Number of swimming and wading pools	4
Number of community buildings	16
Number of sports facilities	12
Number of municipal golf courses (18 holes)	1

Public Safety:

Number of police stations	1
Number of police officers and other sworn personnel	142
Number of service calls	76,074
Total arrests	7,383
Traffic citations	4,364
Parking citations	85,000
Number of fire stations	8
Number of firefighters and officers	92

Public Schools:

Elementary schools	15
Annual enrollment	6,430
Secondary schools	9
Annual enrollment	9,570
Colleges	1
Enrollment per semester	16,177

Waterfront:

Acreage of city-managed tidelands and submerged lands	252
Wharf length in feet	1,950
Acreage of wharf decking	3.8
Number of marinas	4
Number of commercial and pleasure vessel slips	1,143
Number of waterfront property leases	65



COMMUNITY PROFILE

Demographics

Regional Population ⁽³⁾

City of Santa Barbara	94,807
Santa Barbara County	453,457
San Luis Obispo County	280,101
Ventura County	859,073

Area (in square miles)

Land area	21.1
Water area	22.0
Total area	43.1

Gender ⁽¹⁾

	<u>#</u>	<u>%</u>
Male	47,498	50.1
Female	47,309	49.9

Age ⁽¹⁾

Median age (in years)	36.7
-----------------------------	------

Population Demographics ⁽⁷⁾

	<u>#</u>	<u>%</u>
Households	36,114	100.0
Family households	18,563	51.4
Married couples	13,505	37.3
Male householder	1,553	4.3
Female householder	3,503	9.7
Non-family households	17,551	48.6
Single Households	12,170	33.7
Single Households 65 years and over	4,406	12.2
Average household size	2.49	(X)

Housing ⁽¹⁾

Median home price (2019) ⁽⁶⁾ \$1,170,200

	<u>#</u>	<u>%</u>
Total housing units	37,886	100.0
Occupied housing units	34,973	92.3
Vacant housing units	2,913	7.7
Seasonal, recreational, or occasional use housing ^(1b)	1,015	(X)
Homeowner vacancy rate	(x)	1.7
Rental vacancy rate.....	(x)	1.7

Housing Tenure ⁽¹⁾

Occupied housing units	34,973	100.0
Owner-occupied units	13,954	39.9
Renter-occupied units	21,019	60.1
Avg. household size of owner-occupied units	2.54	(X)
Avg. household size of renter-occupied units	2.54	(X)

Race and Ethnicity ⁽¹⁾

	<u>%</u>
White	54.8
Black or African American	1.3
American Indian/Alaska Native	0.4
Asian	3.4
Some other race	0.2
Two or more races	1.9
Hispanic or Latino (of any race)	38.0

Education ⁽⁵⁾

	<u>%</u>
High school graduate	84.1
College graduates (2 year)	6.8
College graduates (4 year)	45.1
Graduate degrees	18.4



COMMUNITY PROFILE

Demographics

Employment ^(1a)

Work population (16 yrs and older) ⁽¹⁾	75,348
Residents by major profession:	%
Management, professional and related	41.3
Sales and office occupation	20.3
Service	25.4
Construction, maintenance, production and transportation	13.0
City household median annual income ⁽¹⁾	\$71,160

Economic Demographics ⁽²⁾

<u>Service Industry (private & non-profit)</u>	<u>Number of Businesses</u>	<u>Number of Employees</u>
Professional, scientific, and technical services	657	3,836
Retail trade	531	6,881
Healthcare and social assistance	562	8,733
Foodservice and lodging	421	8,143
Other services (except public administration)	287	1,734
Real estate and rental & leasing	287	1,101
Administrative and support, waste management, and remediation services	268	2,953
Information	115	1,912
Wholesale trade	110	1,641
Arts, entertainment, and recreation	97	1,508
Manufacturing	96	998
Educational services	62	486

Leading Area Employers, Public and Private (with industry) ⁽⁴⁾

University of California, Santa Barbara (higher education)	4,325
County of Santa Barbara (government)	4,213
Cottage Hospital and Health System (healthcare)	3,606
Santa Barbara Unified School District (education)	1,400
Santa Barbara City College (education)	1,193
City of Santa Barbara ⁽⁶⁾ (government)	1,042
Raytheon (aerospace and defense)	1,000
Sansum Medical Clinic (healthcare)	1,000
Santa Barbara County Education Office (education)	875
Yardi Systems (software)	700

- (1) Source: U.S. Bureau of the Census, American Community Survey, 2010
- (1a) Source: U.S. Bureau of the Census, American Community Survey, 2010-2012 (3-Year Est.)
- (2) Source: U.S. Bureau of the Census, 2012 Economic Census
- (3) Source: State of California, Department of Finance, *E-1 Population Estimates for Cities, Counties and the State with Annual Percent Change — January 1, 2015 and 2016*. Sacramento, California, May 2016.
- (4) Source: City of Santa Barbara *Comprehensive Annual Financial Report: Fiscal Year Ended June 30, 2011*. p. 173.
- (5) Source: U.S. Bureau of the Census, American Community Survey, 2011-2015 (5-Year Est.)
- (6) Source: Zillow Home Price Index March 4, 2019
- (7) Source: U.S. Bureau of the Census, 2010 Census
- (8) Includes permanent full-time equivalent positions as of July 1, 2019