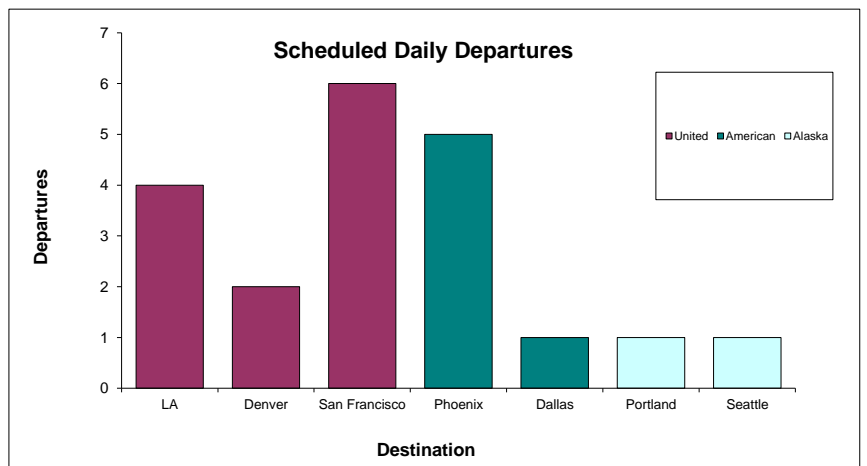
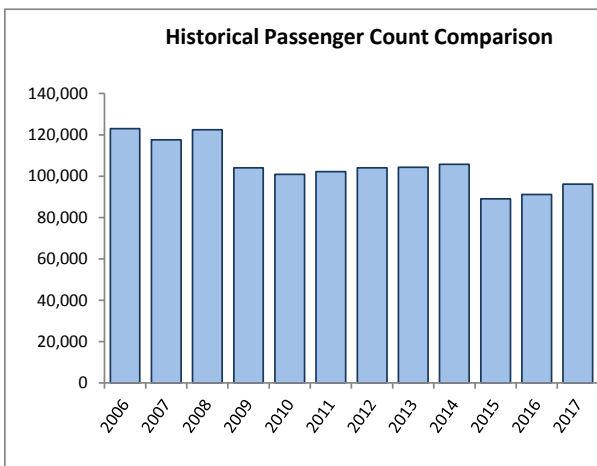
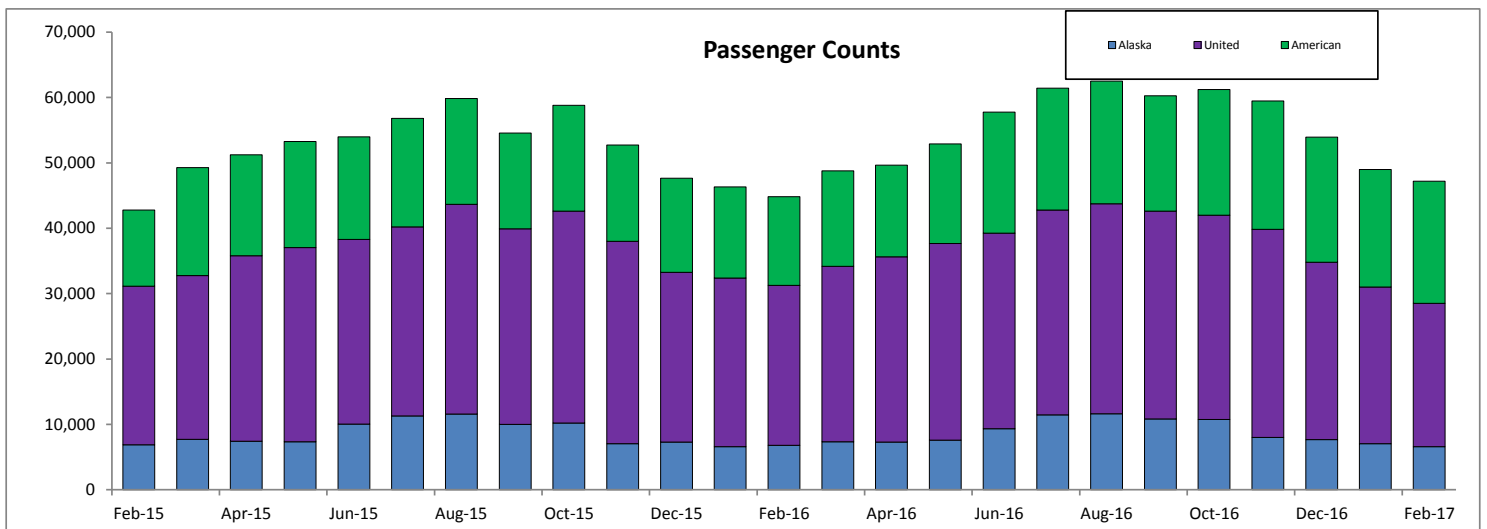


# SANTA BARBARA AIRPORT PASSENGER COUNT 2017

## February

Date	Alaska	United	American <sup>1</sup>	Monthly Total	Prior Year Month Total	M-T-M % Change	Current Y-T-D	Prior Y-T-D	Y-T-Y % Change
Jan '17	7,048	23,979	17,963	48,990	46,320	5.8%	48,990	46,320	5.8%
Feb '17	6,595	21,896	18,696	47,187	44,805	5.3%	96,177	91,125	5.5%
Mar '17	0	0	0	0	48,760	na	0	139,885	na
Apr '17	0	0	0	0	49,643	na	0	189,528	na
May '17	0	0	0	0	52,883	na	0	242,411	na
Jun '17	0	0	0	0	57,766	na	0	300,177	na
July '17	0	0	0	0	61,441	na	0	361,618	na
Aug '17	0	0	0	0	62,503	na	0	424,121	na
Sep '17	0	0	0	0	60,245	na	0	484,366	na
Oct '17	0	0	0	0	61,200	na	0	545,566	na
Nov '17	0	0	0	0	59,471	na	0	605,037	na
Dec '17	0	0	0	0	53,919	na	0	658,956	na
	13,643	45,875	36,659	96,177					

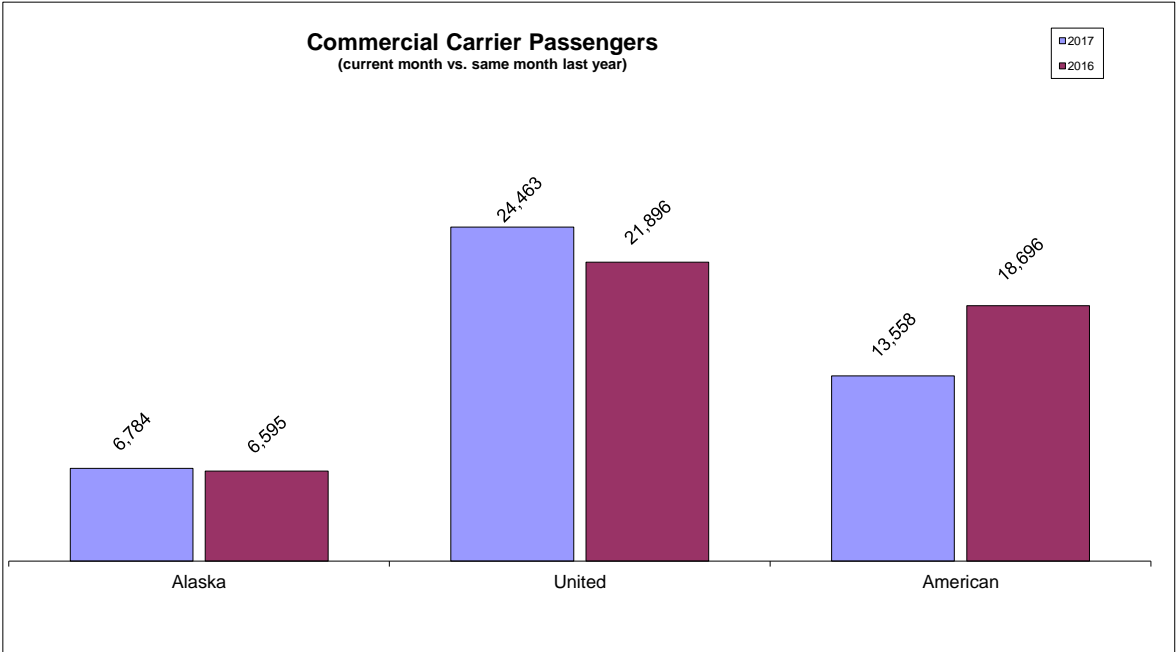
*Legend for Chart:* Y-T-D = Year-To-Date Y-T-Y = Year-To-Year



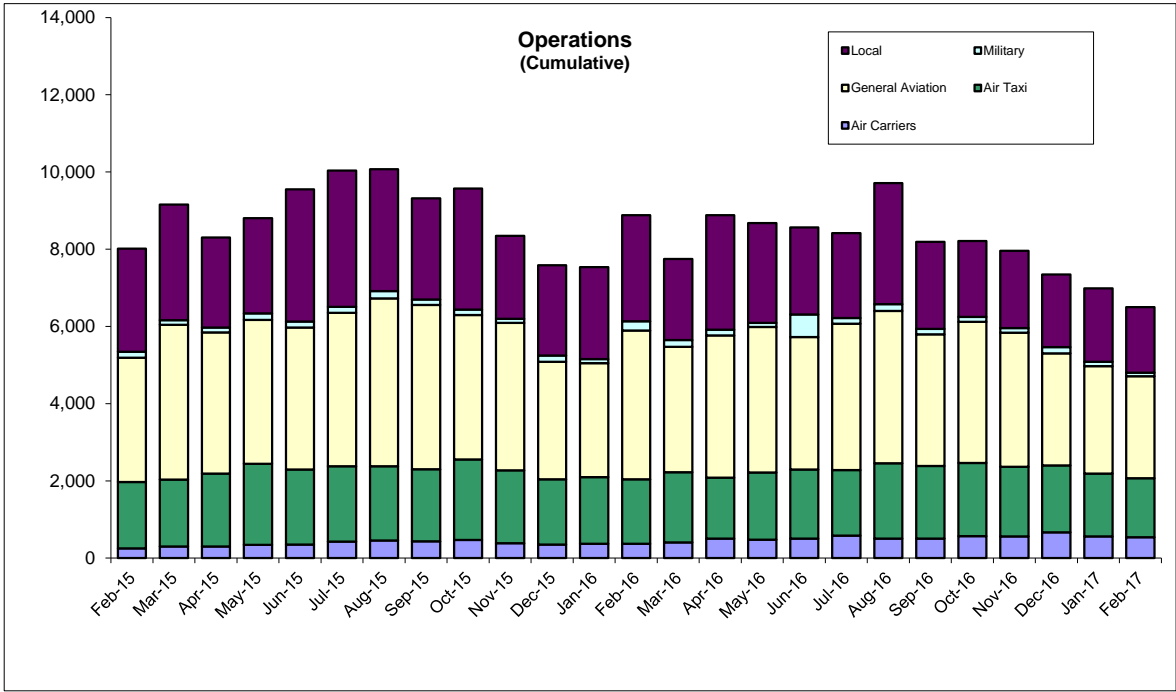
February

Total Departures 20

<sup>1</sup> All US Airways flights operating as American in October 2015. Reported as US Airways in prior months.



Percentage Change (current month vs. same month last year)	
Alaska	-3%
United	-10%
American	38%



Operations Percentage Change (current month vs. same month last year)	
Local	-38%
Military	-62%
General Aviation	-31%
Air Taxi	-9%
Air Carrier	45%
<b>Total</b>	<b>-27%</b>

