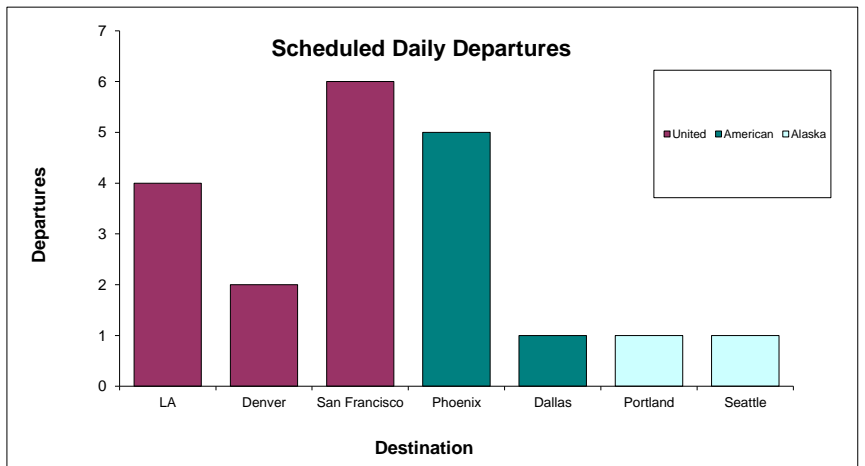
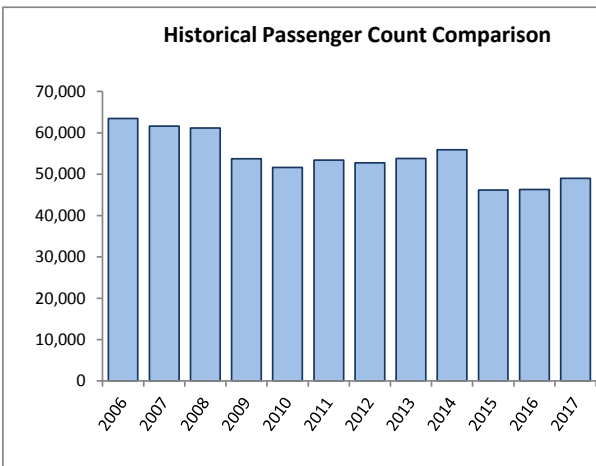
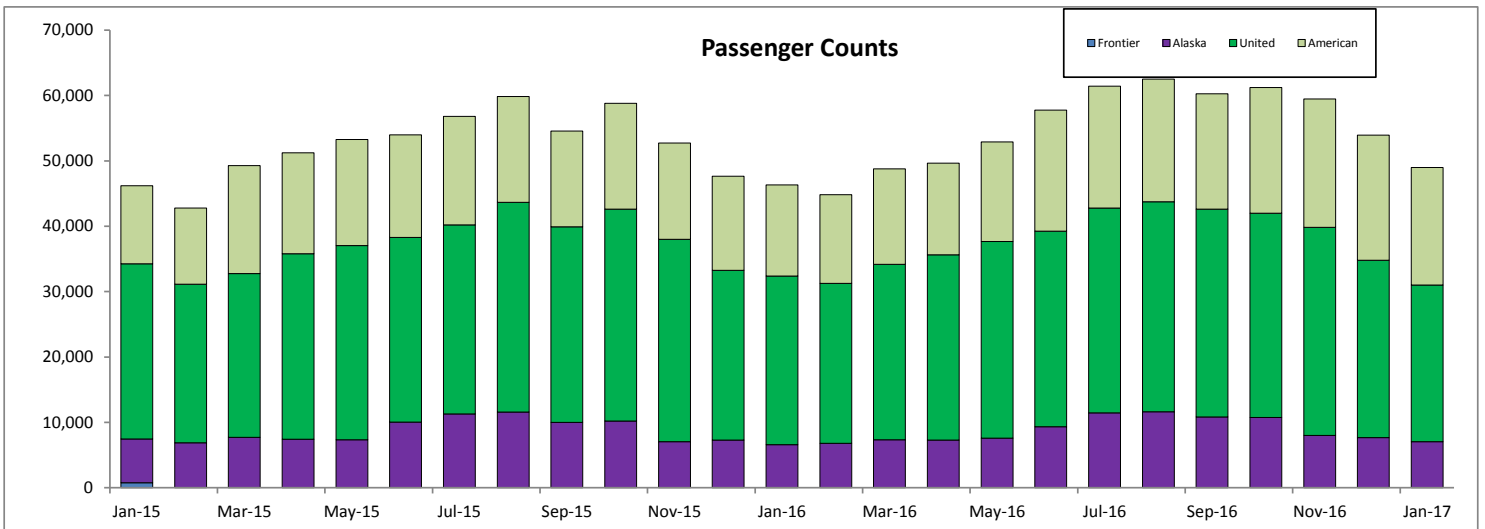


SANTA BARBARA AIRPORT PASSENGER COUNT 2017

January

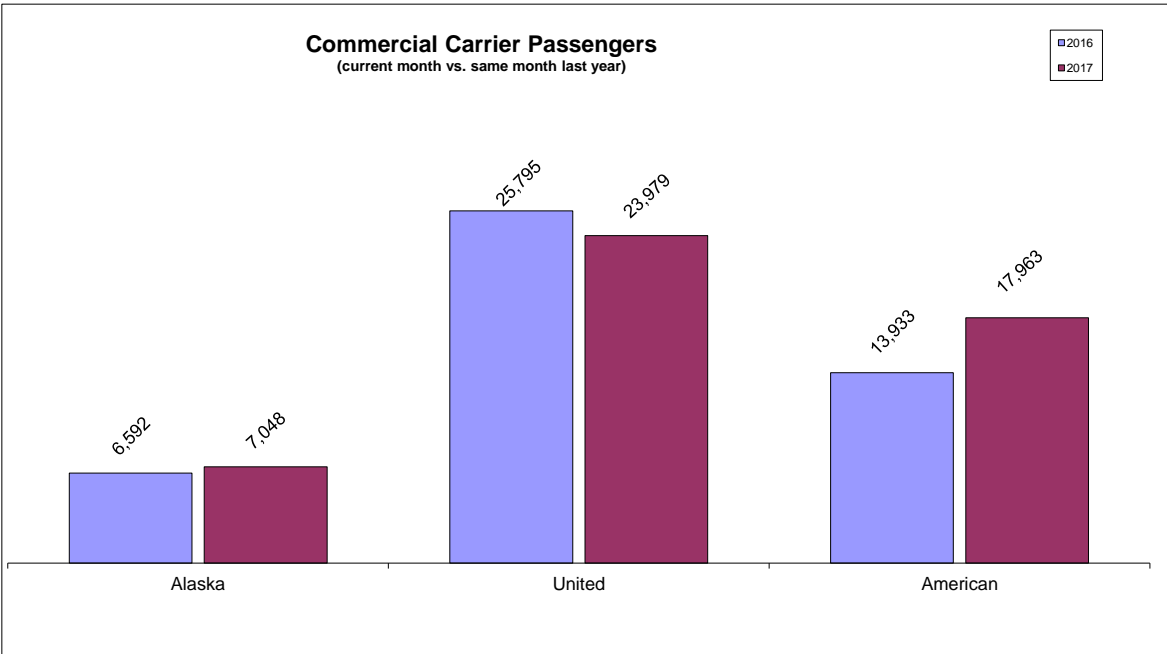
Date	Alaska	United	American ¹	Monthly Total	Prior Year Month Total	M-T-M % Change	Current Y-T-D	Prior Y-T-D	Y-T-Y % Change
Jan '17	7,048	23,979	17,963	48,990	46,320	5.8%	48,990	46,320	5.8%
Feb '17	0	0	0	0	44,805	na	0	91,125	na
Mar '17	0	0	0	0	48,760	na	0	139,885	na
Apr '17	0	0	0	0	49,643	na	0	189,528	na
May '17	0	0	0	0	52,883	na	0	242,411	na
Jun '17	0	0	0	0	57,766	na	0	300,177	na
July '17	0	0	0	0	61,441	na	0	361,618	na
Aug '17	0	0	0	0	62,503	na	0	424,121	na
Sep '17	0	0	0	0	60,245	na	0	484,366	na
Oct '17	0	0	0	0	61,200	na	0	545,566	na
Nov '17	0	0	0	0	59,471	na	0	605,037	na
Dec '17	0	0	0	0	53,919	na	0	658,956	na
	7,048	23,979	17,963	48,990					

Legend for Chart: Y-T-D = Year-To-Date Y-T-Y = Year-To-Year



¹ All US Airways flights operating as American in October 2015. Reported as US Airways in prior months.

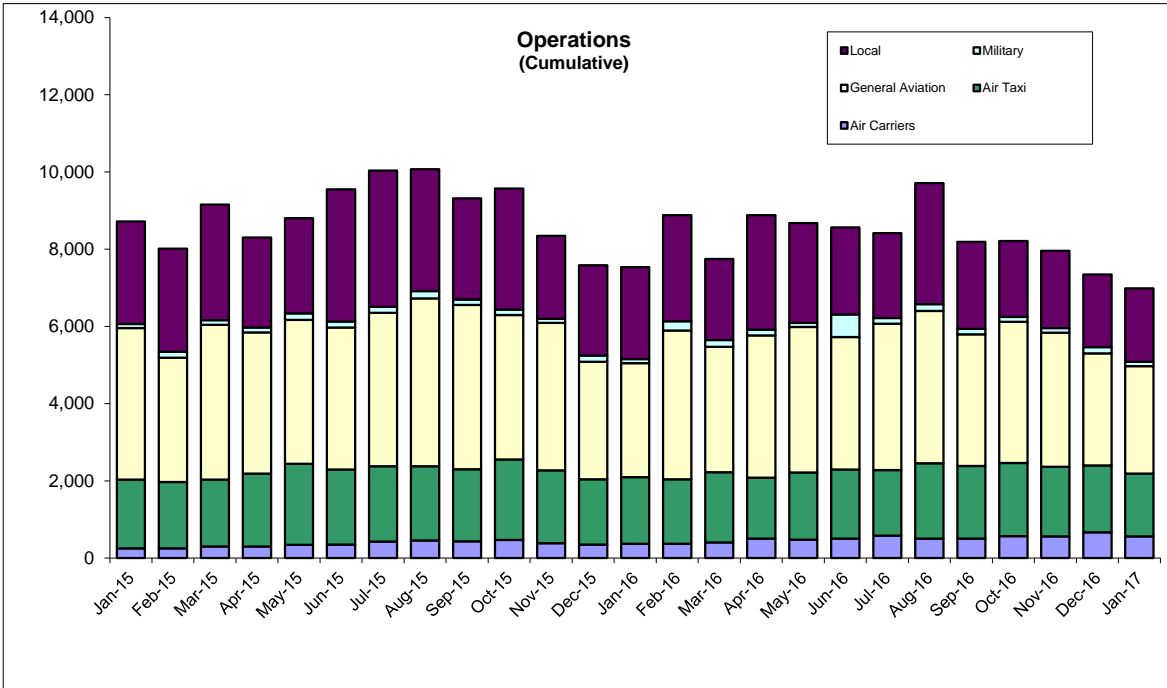
Commercial Carrier Passengers (current month vs. same month last year)



Percentage Change (current month vs. same month last year)

Alaska	7%
United	-7%
American	29%

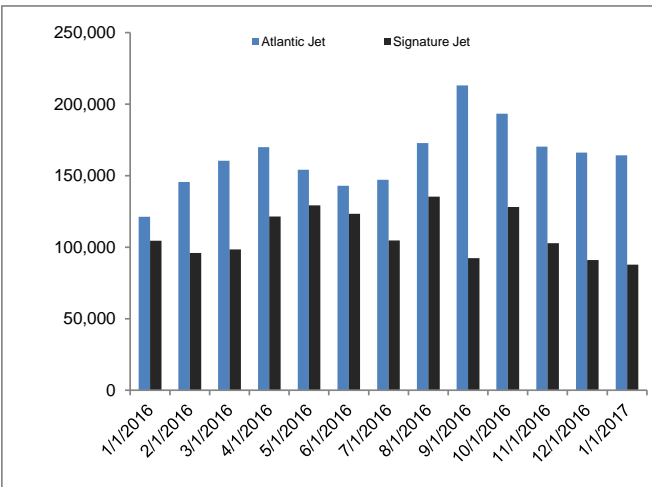
Operations (Cumulative)



Operations Percentage Change (current month vs. same month last year)

Local	-20%
Military	10%
General Aviation	-6%
Air Taxi	-5%
Air Carrier	50%
Total	-7%

Atlantic Jet Signature Jet



Atlantic Avgas Signature Avgas MAG Aviation-Avgas

