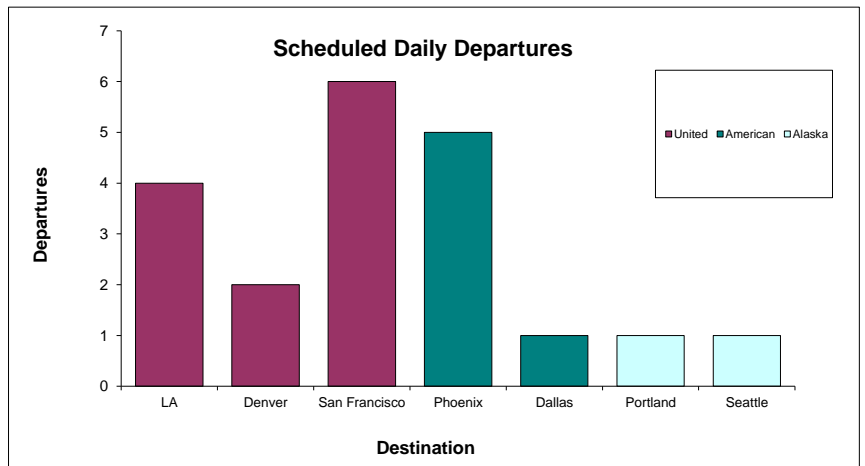
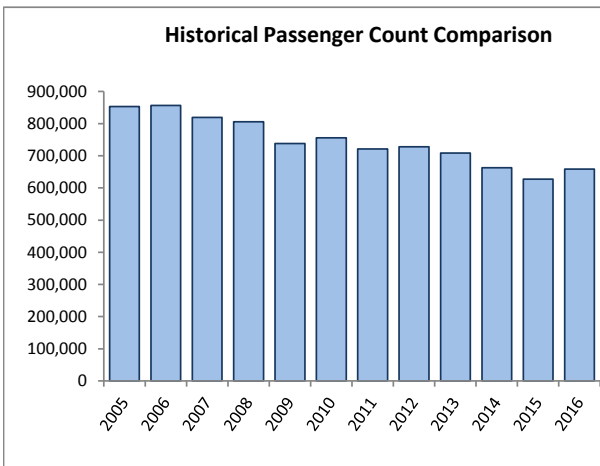
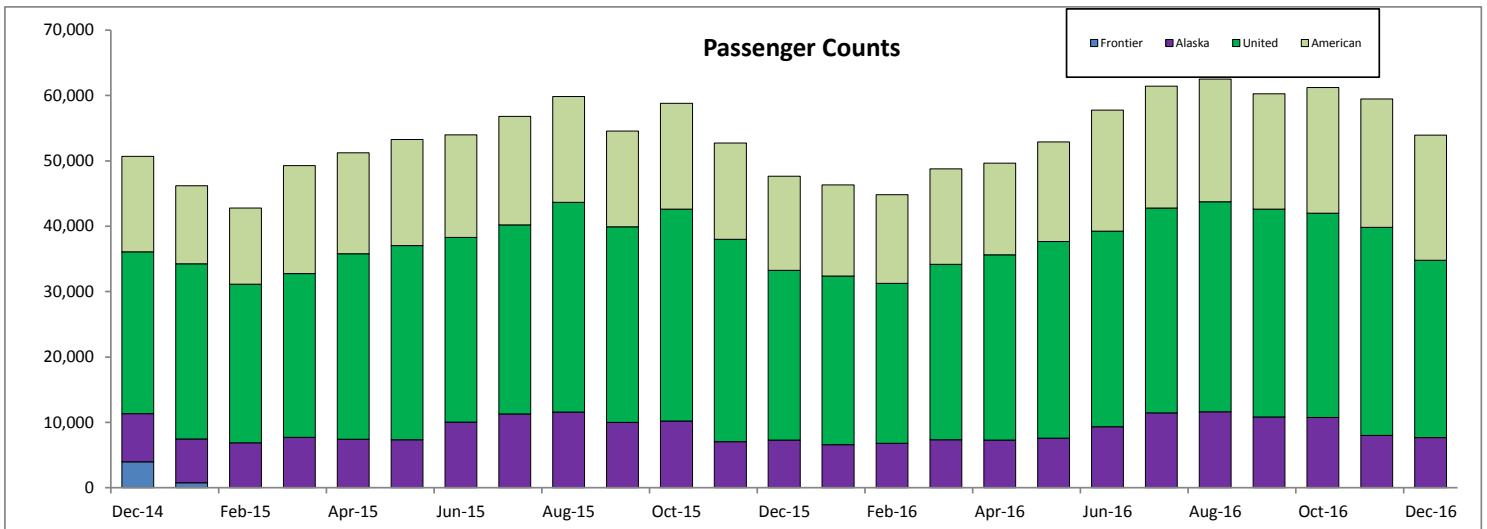


# SANTA BARBARA AIRPORT PASSENGER COUNT 2016

## December

Date	Alaska	United	American <sup>1</sup>	Monthly Total	Prior Year Month Total	M-T-M % Change	Current Y-T-D	Prior Y-T-D	Y-T-Y % Change
Jan '16	6,592	25,795	13,933	46,320	46,178	0.3%	46,320	46,178	0.3%
Feb '16	6,784	24,463	13,558	44,805	42,800	4.7%	91,125	88,978	2.4%
Mar '16	7,324	26,845	14,591	48,760	49,256	-1.0%	139,885	138,234	1.2%
Apr '16	7,303	28,328	14,012	49,643	51,225	-3.1%	189,528	189,459	0.0%
May '16	7,578	30,082	15,223	52,883	53,269	-0.7%	242,411	242,728	-0.1%
Jun '16	9,308	29,930	18,528	57,766	53,994	7.0%	300,177	296,722	1.2%
July '16	11,464	31,312	18,665	61,441	56,822	8.1%	361,618	353,544	2.3%
Aug '16	11,632	32,122	18,749	62,503	59,857	4.4%	424,121	413,401	2.6%
Sep '16	10,809	31,794	17,642	60,245	54,583	10.4%	484,366	467,984	3.5%
Oct '16	10,745	31,248	19,207	61,200	58,787	4.1%	545,566	526,771	3.6%
Nov '16	7,997	31,831	19,643	59,471	52,738	12.8%	605,037	579,509	4.4%
Dec '16	7,647	27,148	19,124	53,919	47,668	13.1%	658,956	627,177	5.1%
	105,183	350,898	202,875	658,956					

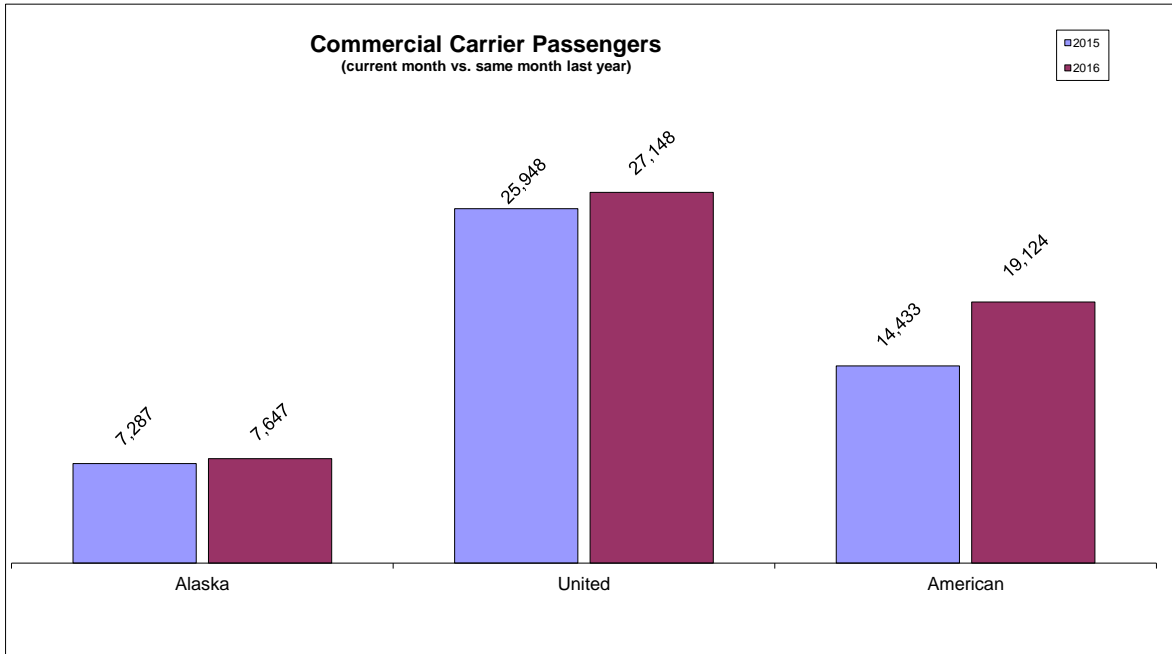
*Legend for Chart:* Y-T-D = Year-To-Date Y-T-Y = Year-To-Year



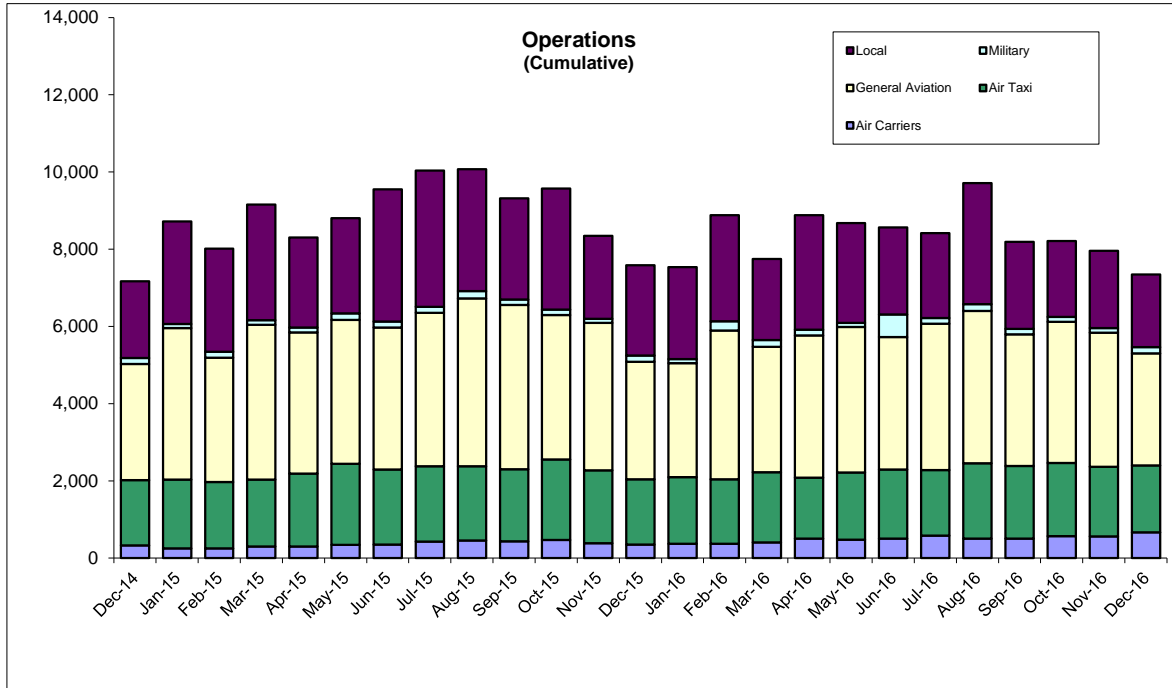
November

Total Departures 20

<sup>1</sup> All US Airways flights operating as American in October 2015. Reported as US Airways in prior months.



Percentage Change (current month vs. same month last year)	
Alaska	5%
United	5%
American	33%



Operations Percentage Change (current month vs. same month last year)	
Local	-20%
Military	3%
General Aviation	-5%
Air Taxi	2%
Air Carrier	92%
<b>Total</b>	<b>-3%</b>

