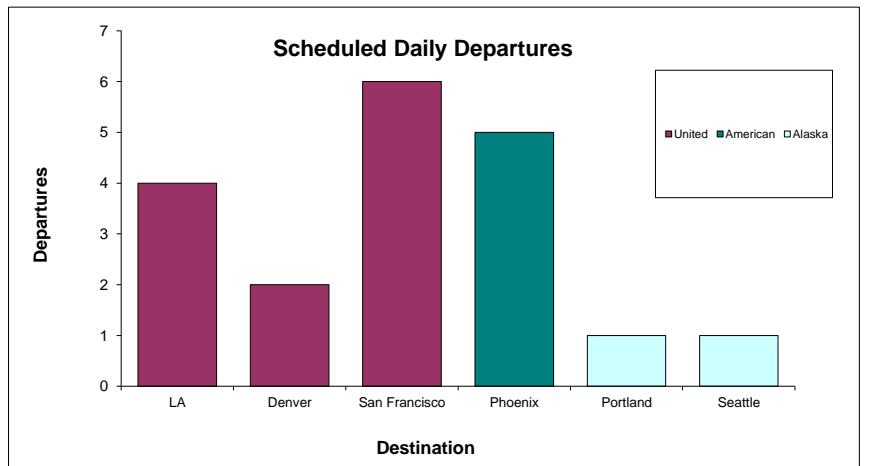
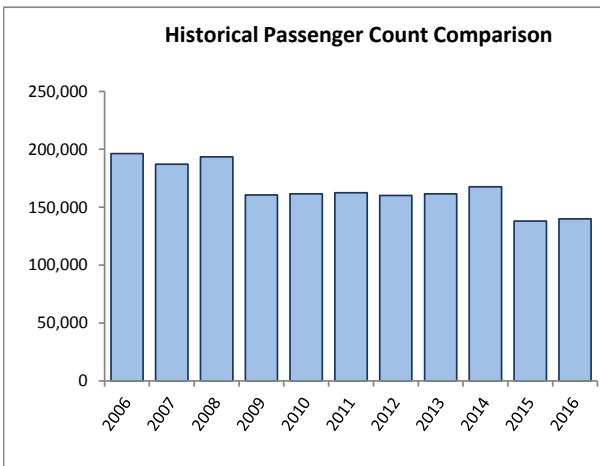
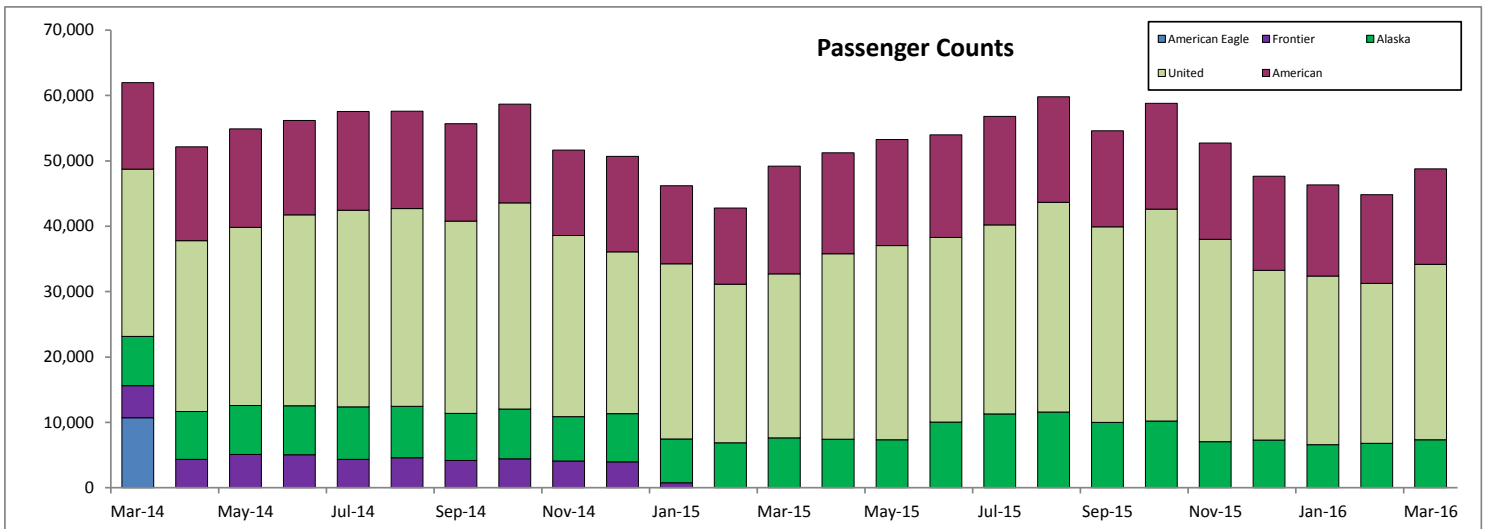


SANTA BARBARA AIRPORT PASSENGER COUNT 2016

March

Date	Alaska	United	American ¹	Monthly Total	Prior Year Month Total	M-T-M % Change	Current Y-T-D	Prior Y-T-D	Y-T-Y % Change
Jan '16	6,592	25,795	13,933	46,320	46,178	0.3%	46,320	46,178	0.3%
Feb '16	6,784	24,463	13,558	44,805	42,800	4.7%	91,125	88,978	2.4%
Mar '16	7,324	26,845	14,591	48,760	49,256	-1.0%	139,885	138,234	1.2%
Apr '16	0	0	0	0	51,225	na	0	189,459	na
May '16	0	0	0	0	53,269	na	0	242,728	na
Jun '16	0	0	0	0	53,994	na	0	296,722	na
July '16	0	0	0	0	56,822	na	0	353,544	na
Aug '16	0	0	0	0	59,807	na	0	413,351	na
Sep '16	0	0	0	0	54,583	na	0	467,934	na
Oct '16	0	0	0	0	58,787	na	0	526,721	na
Nov '16	0	0	0	0	52,738	na	0	579,459	na
Dec '16	0	0	0	0	47,668	na	0	627,127	na
				20,700	77,103	42,082	139,885		

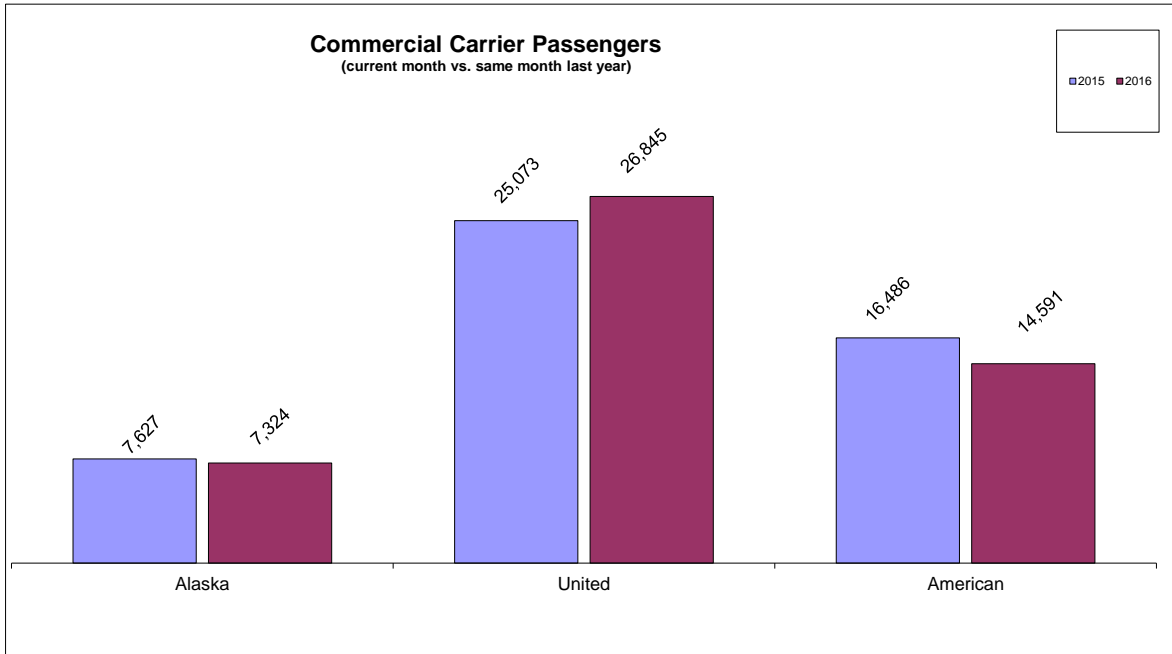
Legend for Chart: Y-T-D = Year-To-Date Y-T-Y = Year-To-Year



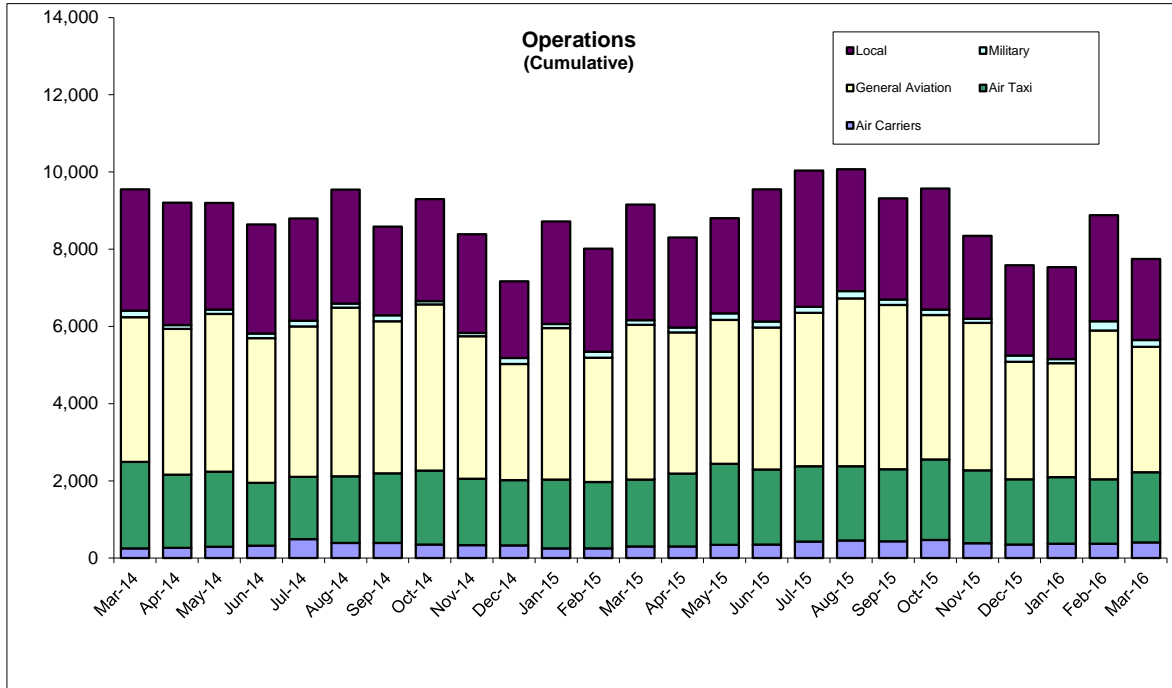
March

Total Departures 19

¹ All US Airways flights operating as American in October 2015. Reported as US Airways in prior months.



Percentage Change (current month vs. same month last year)	
Alaska	-4%
United	7%
American	-11%



Operations Percentage Change (current month vs. same month last year)	
Local	-30%
Military	48%
General Aviation	-19%
Air Taxi	5%
Air Carrier	35%
Total	-15%

