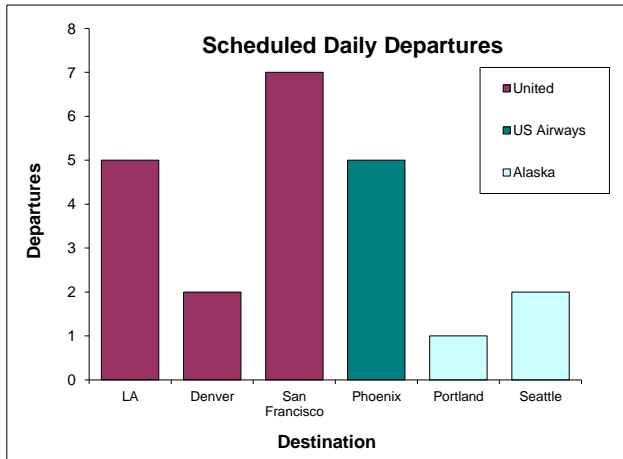
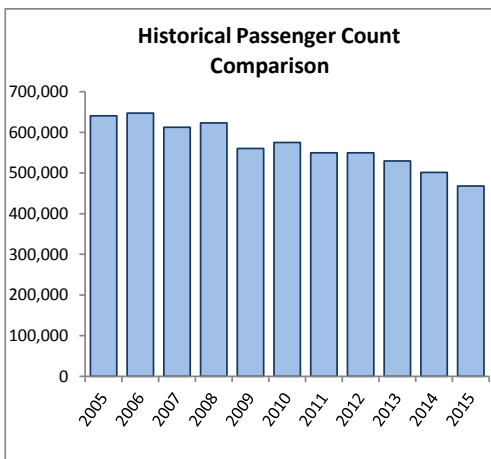
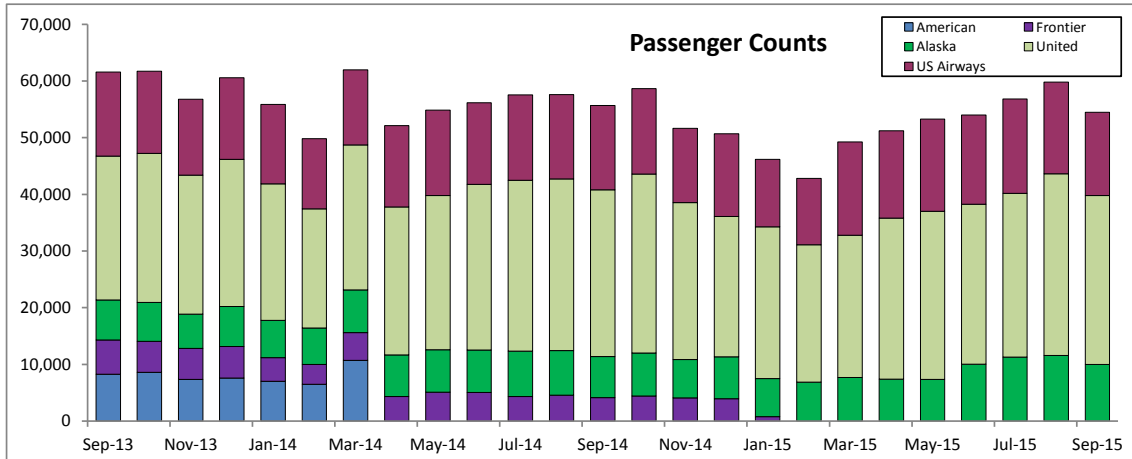


SANTA BARBARA AIRPORT PASSENGER COUNT 2015

September

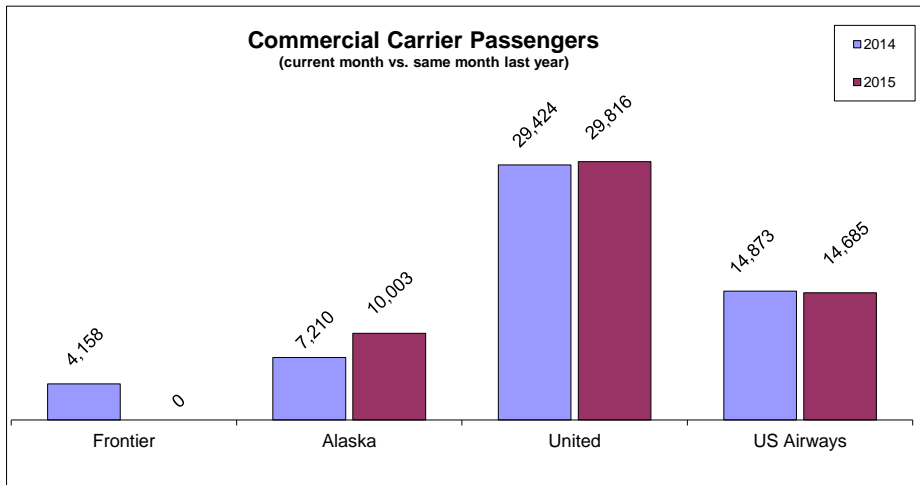
Date	Frontier	Alaska	United	US Airways	Monthly Total	Prior Year Month Total	M-T-M % Change	Current Y-T-D	Prior Y-T-D	Y-T-Y % Change	
Jan '15	774	6,702	26,792	11,910	46,178	55,868	-17.3%	46,178	55,868	-17.3%	
Feb '15	0	6,858	24,258	11,684	42,800	49,850	-14.1%	88,978	105,718	-15.8%	
Mar '15	0	7,697	25,073	16,486	49,256	61,952	-20.5%	138,234	167,670	-17.6%	
Apr '15	0	7,407	28,394	15,424	51,225	52,130	-1.7%	189,459	219,800	-13.8%	
May '15	0	7,338	29,697	16,234	53,269	54,876	-2.9%	242,728	274,676	-11.6%	
Jun '15	0	10,052	28,221	15,721	53,994	56,187	-3.9%	296,722	330,863	-10.3%	
July '15	0	11,300	28,885	16,637	56,822	57,549	-1.3%	353,544	388,412	-9.0%	
Aug '15	0	11,555	32,083	16,169	59,807	57,585	3.9%	413,351	445,997	-7.3%	
Sep '15	0	10,002	29,816	14,685	54,503	55,665	-2.1%	467,854	501,662	-6.7%	
Oct '15	0	0	0	0	0	58,672	na	0	560,334	na	
Nov '15	0	0	0	0	0	51,632	na	0	611,966	na	
Dec '15	0	0	0	0	0	50,695	na	0	662,661	na	
774 78,911 253,219 134,950					467,854						

Legend for Chart: Y-T-D = Year-To-Date Y-T-Y = Year-To-Year

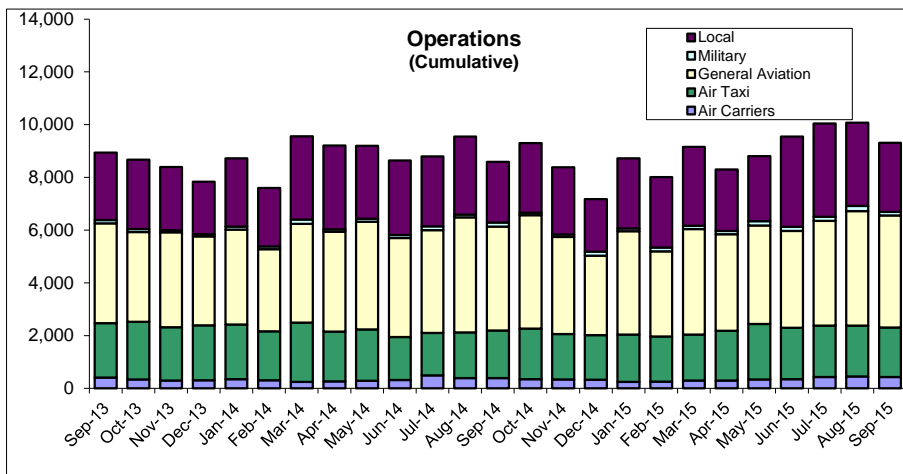


September

Total Departures 22



Percentage Change (current month vs. same month last year)	
Frontier	-100%
Alaska	39%
United	1%
US Airways	-1%



Operations Percentage Change (current month vs. same month last year)	
Local	14%
Military	-11%
General Aviation	8%
Air Taxi	4%
Air Carrier	10%
Total	9%

