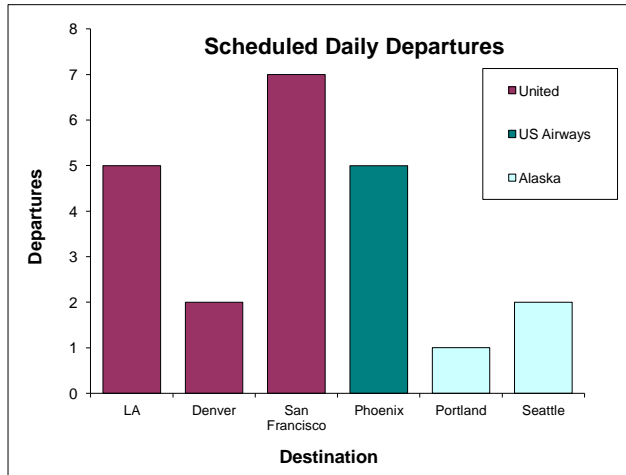
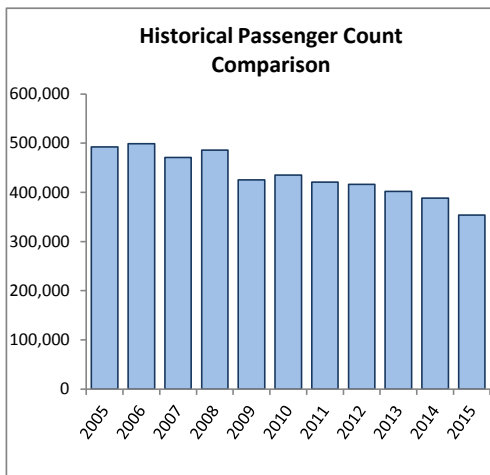
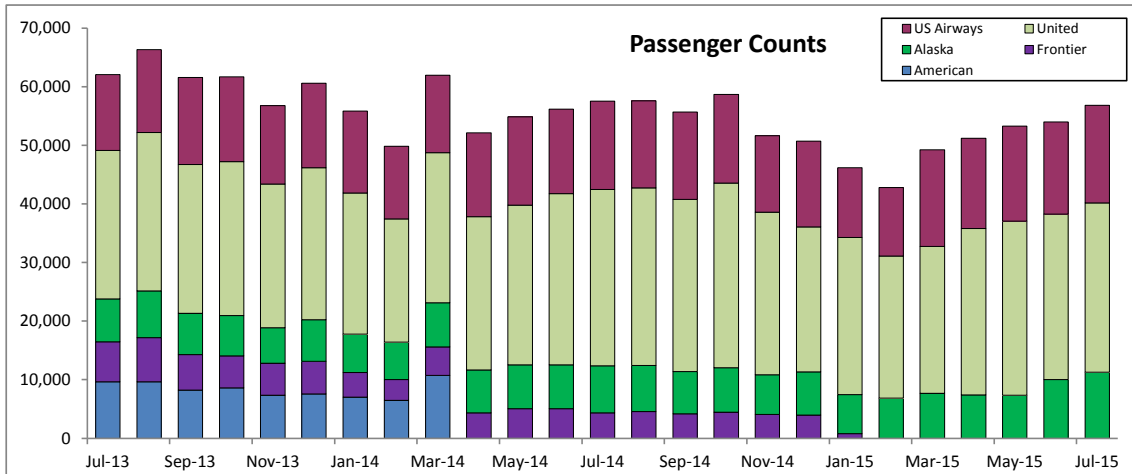


SANTA BARBARA AIRPORT PASSENGER COUNT 2015

July

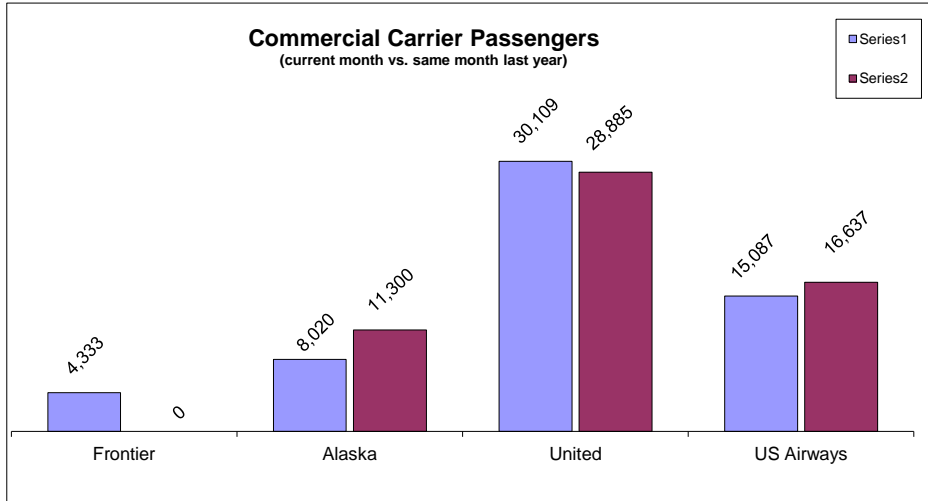
Date	Frontier	Alaska	United	US Airways				Current Y-T-D	Prior Y-T-D	Y-T-Y % Change
					Monthly Total	Prior Year Month Total	M-T-M % Change			
Jan '15	774	6,702	26,792	11,910	46,178	55,868	-17.3%	46,178	55,868	-17.3%
Feb '15	0	6,858	24,258	11,684	42,800	49,850	-14.1%	88,978	105,718	-15.8%
Mar '15	0	7,697	25,073	16,486	49,256	61,952	-20.5%	138,234	167,670	-17.6%
Apr '15	0	7,407	28,394	15,424	51,225	52,130	-1.7%	189,459	219,800	-13.8%
May '15	0	7,338	29,697	16,234	53,269	54,876	-2.9%	242,728	274,676	-11.6%
Jun '15	0	10,052	28,221	15,721	53,994	56,187	-3.9%	296,722	330,863	-10.3%
July '15	0	11,300	28,885	16,637	56,822	57,549	-1.3%	353,544	388,412	-9.0%
Aug '15	0	0	0	0	0	57,585	na	0	445,997	na
Sep '15	0	0	0	0	0	55,665	na	0	501,662	na
Oct '15	0	0	0	0	0	58,672	na	0	560,334	na
Nov '15	0	0	0	0	0	51,632	na	0	611,966	na
Dec '15	0	0	0	0	0	50,695	na	0	662,661	na
	774	57,354	191,320	104,096	353,544					

Legend for Chart: Y-T-D = Year-To-Date Y-T-Y = Year-To-Year

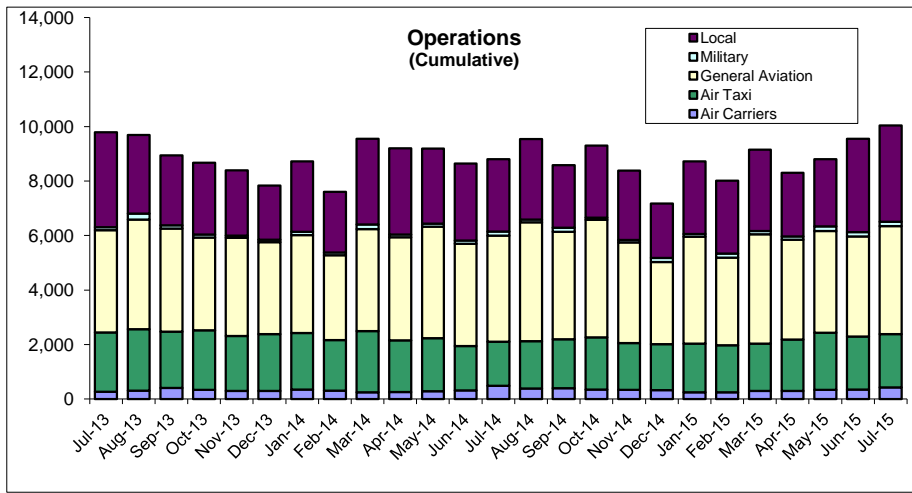


July

Total Departures 22



Percentage Change (current month vs. same month last year)	
Frontier	-100%
Alaska	41%
United	-4%
US Airways	10%



Operations Percentage Change (current month vs. same month last year)	
Local	33%
Military	4%
General Aviation	2%
Air Taxi	21%
Air Carrier	-13%
Total	14%

