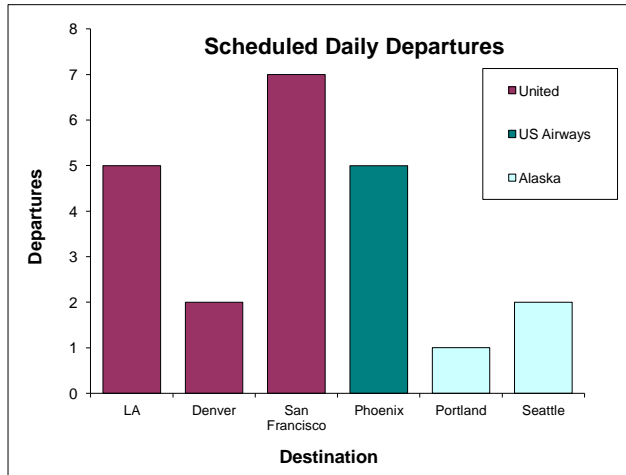
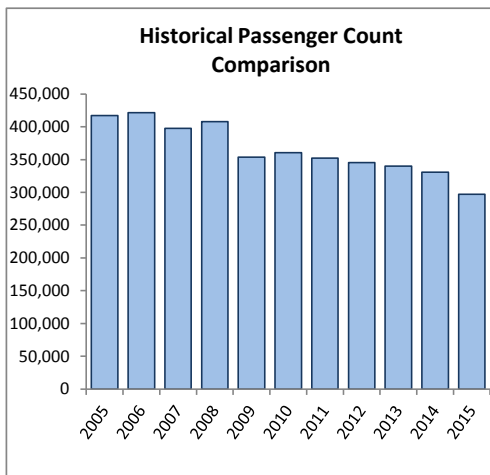
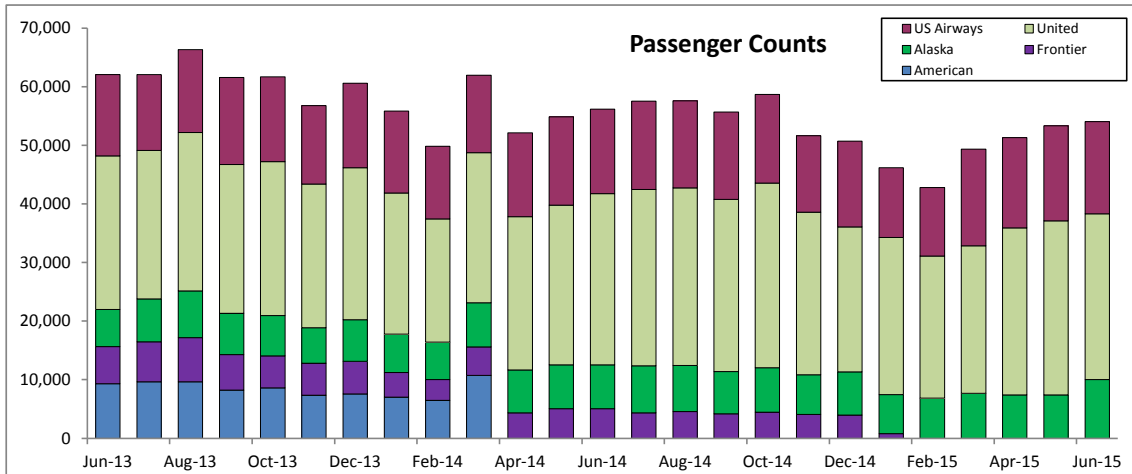


SANTA BARBARA AIRPORT PASSENGER COUNT 2015

June

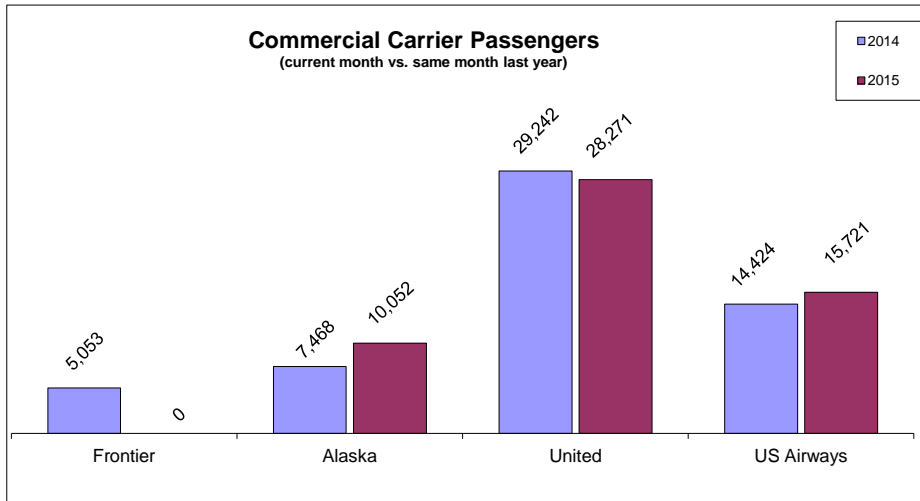
Date	Frontier	Alaska	United	US Airways				Current Y-T-D	Prior Y-T-D	Y-T-Y % Change
					Monthly Total	Prior Year Month Total	M-T-M % Change			
Jan '15	774	6,702	26,792	11,910	46,178	55,868	-17.3%	46,178	55,868	-17.3%
Feb '15	0	6,858	24,258	11,684	42,800	49,850	-14.1%	88,978	105,718	-15.8%
Mar '15	0	7,697	25,149	16,486	49,332	61,952	-20.4%	138,310	167,670	-17.5%
Apr '15	0	7,405	28,487	15,424	51,316	52,130	-1.6%	189,626	219,800	-13.7%
May '15	0	7,402	29,697	16,234	53,333	54,876	-2.8%	242,959	274,676	-11.5%
Jun '15	0	10,052	28,271	15,721	54,044	56,187	-3.8%	297,003	330,863	-10.2%
July '15	0	0	0	0	0	57,549	na	0	388,412	na
Aug '15	0	0	0	0	0	57,585	na	0	445,997	na
Sep '15	0	0	0	0	0	55,665	na	0	501,662	na
Oct '15	0	0	0	0	0	58,672	na	0	560,334	na
Nov '15	0	0	0	0	0	51,632	na	0	611,966	na
Dec '15	0	0	0	0	0	50,695	na	0	662,661	na
	774	46,116	162,654	87,459	297,003					

Legend for Chart: Y-T-D = Year-To-Date Y-T-Y = Year-To-Year

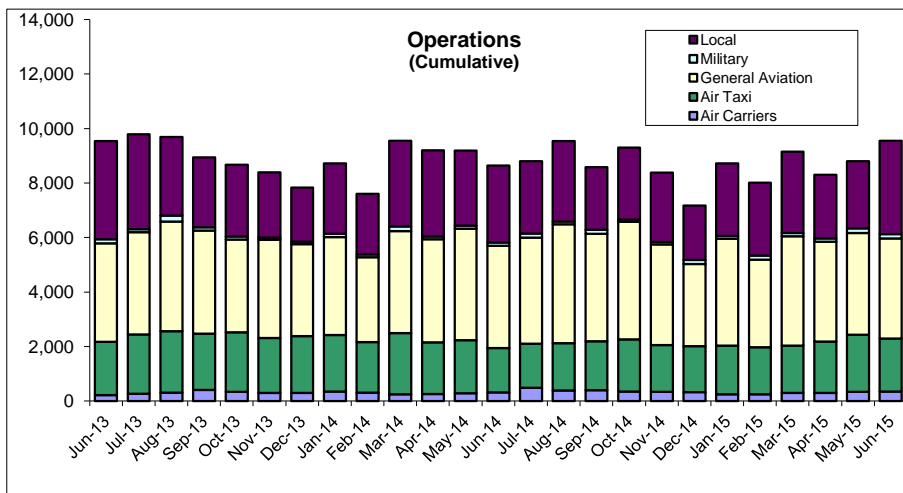


June

Total Departures 22



Percentage Change (current month vs. same month last year)	
Frontier	-100%
Alaska	35%
United	-3%
US Airways	9%



Operations Percentage Change (current month vs. same month last year)	
Local	22%
Military	27%
General Aviation	-2%
Air Taxi	20%
Air Carrier	8%
Total	11%

