

# SANTA BARBARA AIRPORT PASSENGER COUNT 2014

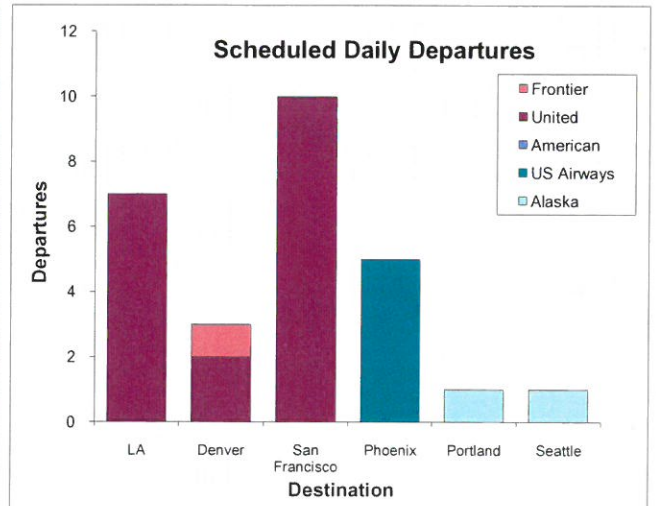
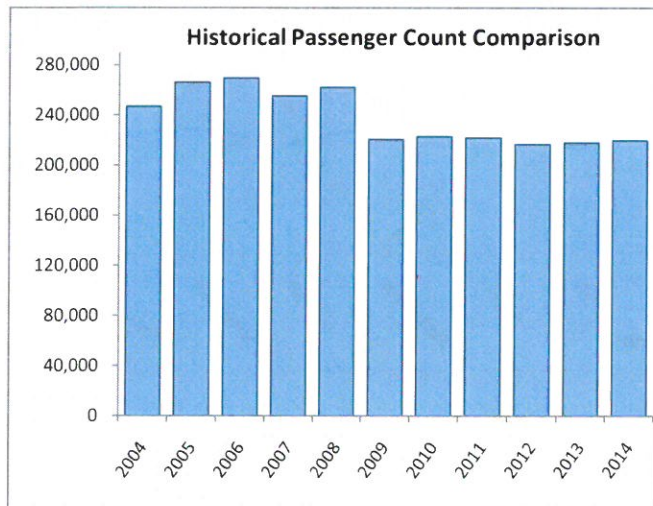
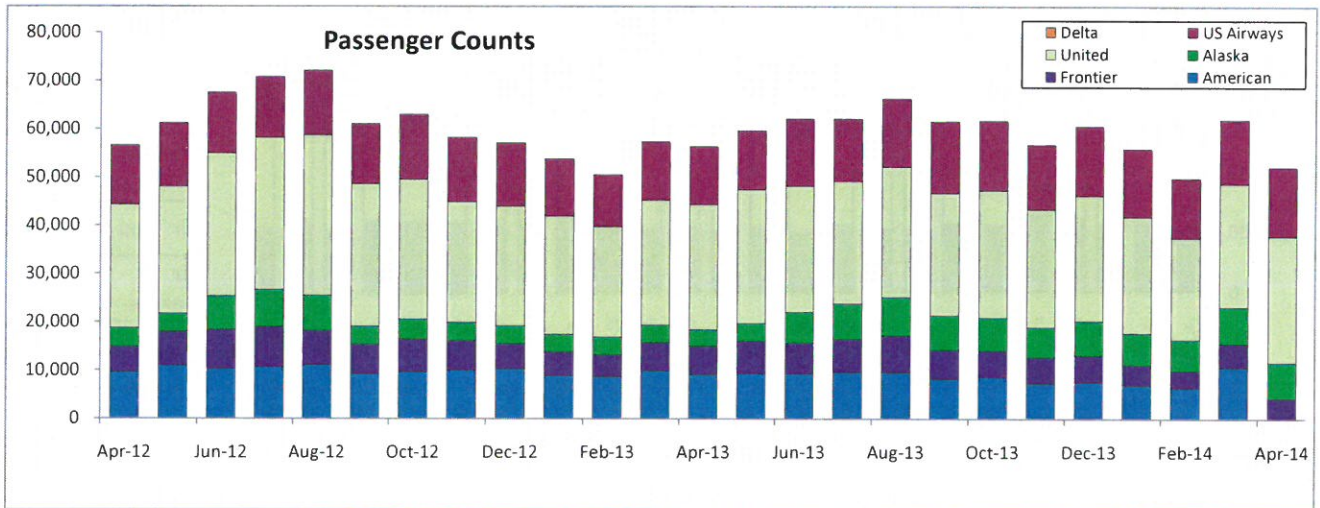
April

Date	American	Frontier	Alaska	United	US Airways	Monthly	Prior Year	M-T-M %	Current	Prior	Y-T-Y %
						Total	Month Total	Change	Y-T-D	Y-T-D	Change
Jan '14	7,027	4,182	6,567	24,106	13,986	55,868	53,819	3.8%	55,868	53,819	3.8%
Feb '14	6,466	3,543	6,423	21,031	12,387	49,850	50,470	-1.2%	105,718	104,289	1.4%
Mar '14	10,721	4,901	7,528	25,571	13,231	61,952	57,331	8.1%	167,670	161,620	3.7%
Apr '14	0	4,332	7,333	26,138	14,327	52,130	56,408	-7.6%	219,800	218,028	0.8%
May '14	0	0	0	0	0	0	59,679	na	0	277,707	na
Jun '14	0	0	0	0	0	0	62,094	na	0	339,801	na
July '14	0	0	0	0	0	0	62,095	na	0	401,896	na
Aug '14	0	0	0	0	0	0	66,305	na	0	468,201	na
Sep '14	0	0	0	0	0	0	61,587	na	0	529,788	na
Oct '14	0	0	0	0	0	0	61,712	na	0	591,500	na
Nov '14	0	0	0	0	0	0	56,767	na	0	648,267	na
Dec '14	0	0	0	0	0	0	60,587	na	0	708,854	na
<b>24,214</b>						<b>16,958</b>	<b>27,851</b>	<b>96,846</b>	<b>53,931</b>	<b>219,800</b>	

Legend for Chart:

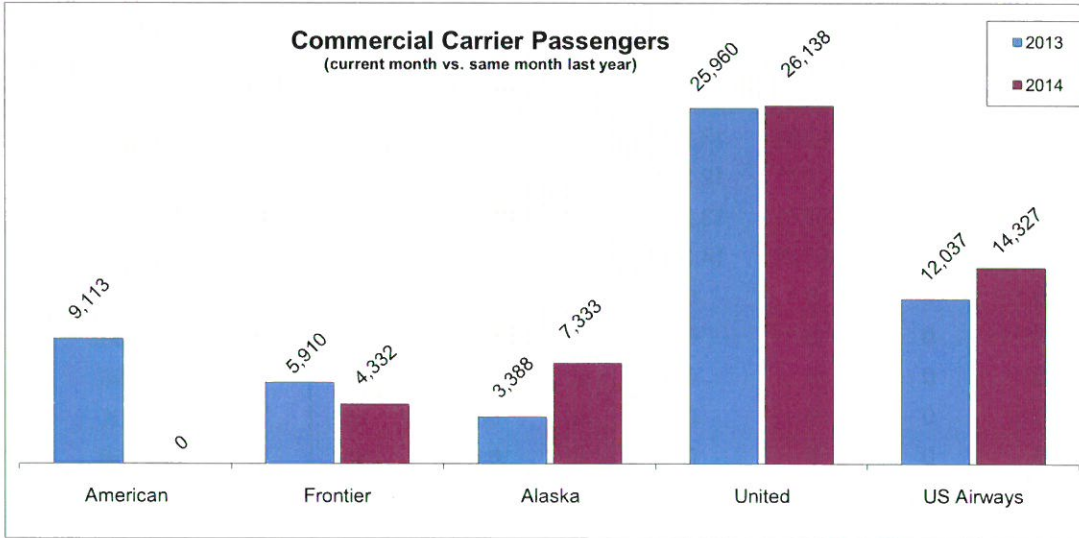
Y-T-D = Year-To-Date

Y-T-Y = Year-To-Year

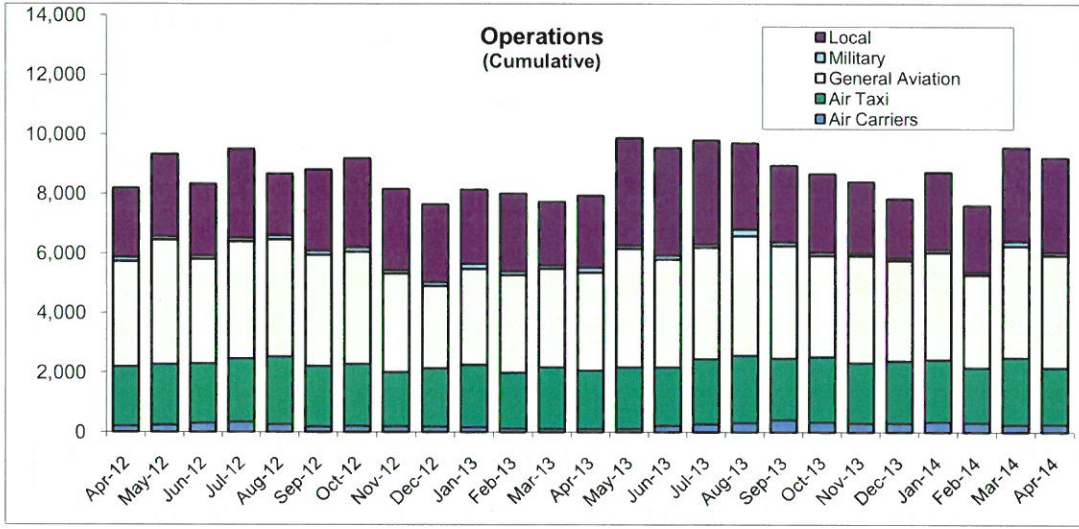


April

Total Departures 27



Percentage Change (current month vs. same month last year)	
American	-100%
Frontier	-27%
Alaska	116%
United	1%
US Airways	19%



Operations Percentage Change (current month vs. same month last year)	
Local	32%
Military	-47%
General Aviation	15%
Air Taxi	-3%
Air Carrier	137%
<b>Total</b>	<b>16%</b>

