

SANTA BARBARA AIRPORT PASSENGER COUNT 2013

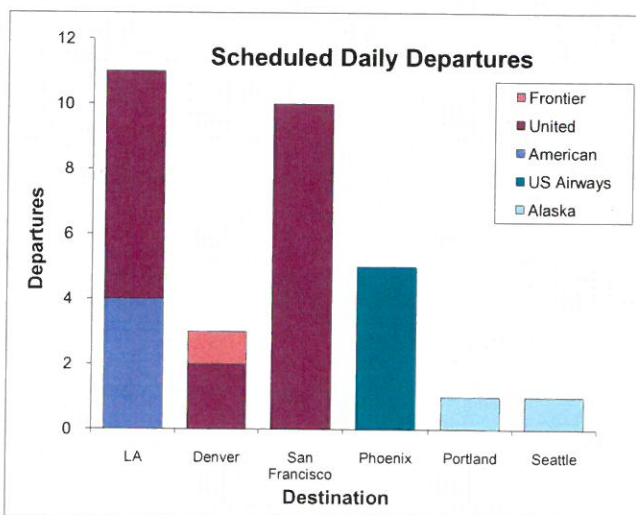
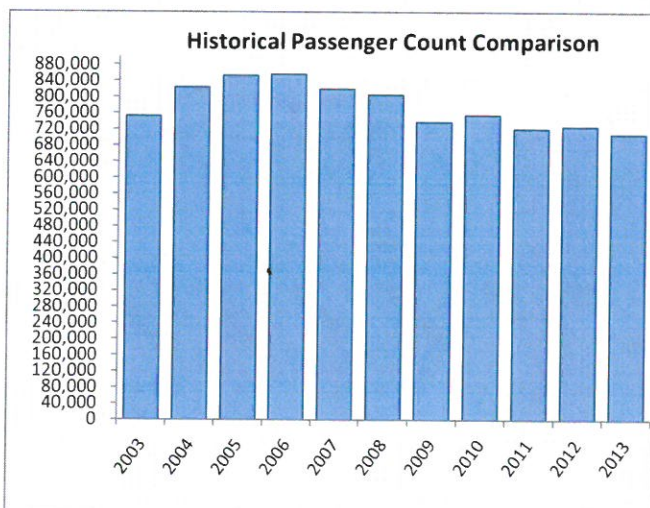
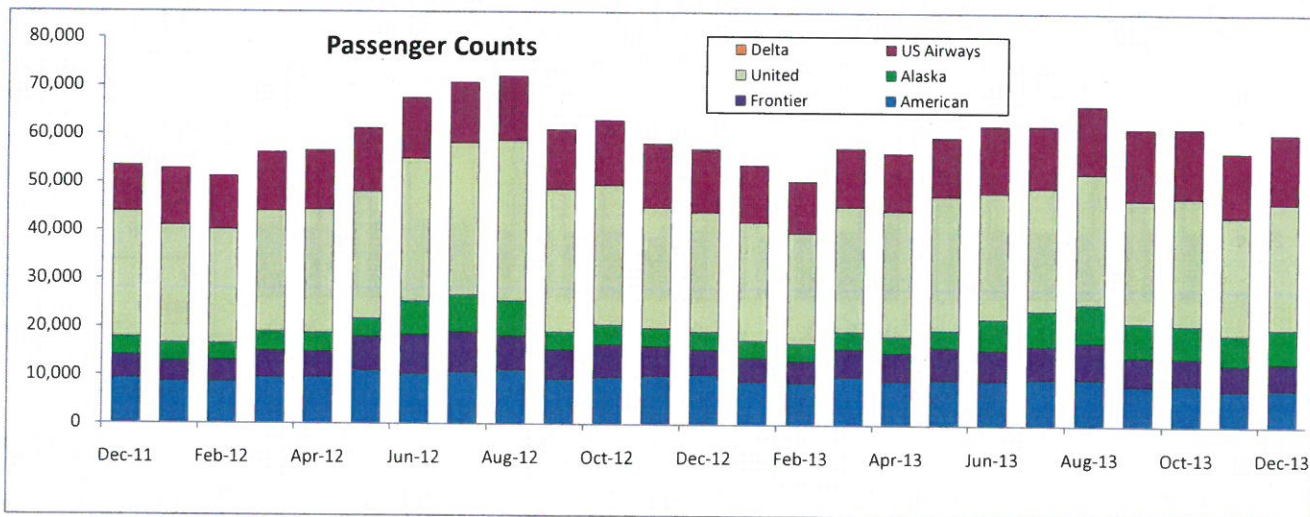
December

Date	American	Frontier	Alaska	United	US Airways				Current Y-T-D	Prior Y-T-D	Y-T-Y % Change			
						Monthly Total	Prior Year Month Total	M-T-M % Change						
Jan '13	8,880	4,942	3,607	24,527	11,863	53,819	52,768	2.0%	53,819	52,768	2.0%			
Feb '13	8,654	4,602	3,590	22,863	10,761	50,470	51,194	-1.4%	104,289	103,962	0.3%			
Mar '13	9,931	5,807	3,649	25,820	12,124	57,331	56,146	2.1%	161,620	160,108	0.9%			
Apr '13	9,113	5,910	3,388	25,960	12,037	56,408	56,586	-0.3%	218,028	216,694	0.6%			
May '13	9,394	6,737	3,585	27,730	12,233	59,679	61,225	-2.5%	277,707	277,919	-0.1%			
Jun '13	9,289	6,388	6,308	26,216	13,893	62,094	67,520	-8.0%	339,801	345,439	-1.6%			
July '13	9,625	6,859	7,318	25,331	12,962	62,095	70,805	-12.3%	401,896	416,244	-3.4%			
Aug '13	9,628	7,526	7,979	27,039	14,133	66,305	72,074	-8.0%	468,201	488,318	-4.1%			
Sep '13	8,249	6,042	7,056	25,390	14,850	61,587	61,048	0.9%	529,788	549,366	-3.6%			
Oct '13	8,595	5,472	6,875	26,288	14,482	61,712	63,012	-2.1%	591,500	612,378	-3.4%			
Nov '13	7,347	5,469	6,049	24,533	13,369	56,767	58,208	-2.5%	648,267	670,586	-3.3%			
Dec '13	7,575	5,574	7,078	25,968	14,392	60,587	57,093	6.1%	708,854	727,679	-2.6%			
						106,280	71,328	66,482	307,665	157,099	708,854			

Legend for Chart:

Y-T-D = Year-To-Date

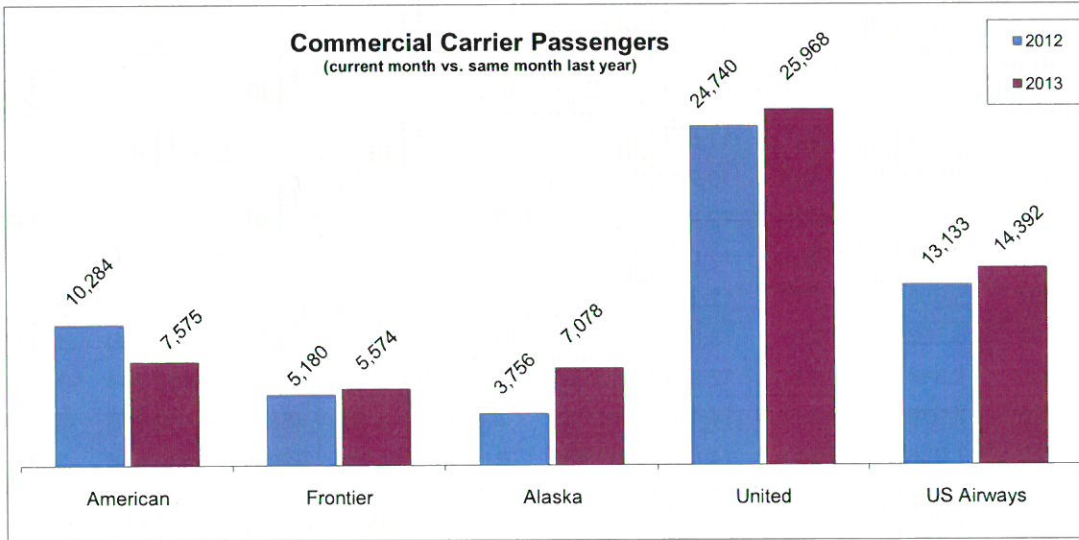
Y-T-Y = Year-To-Year



December

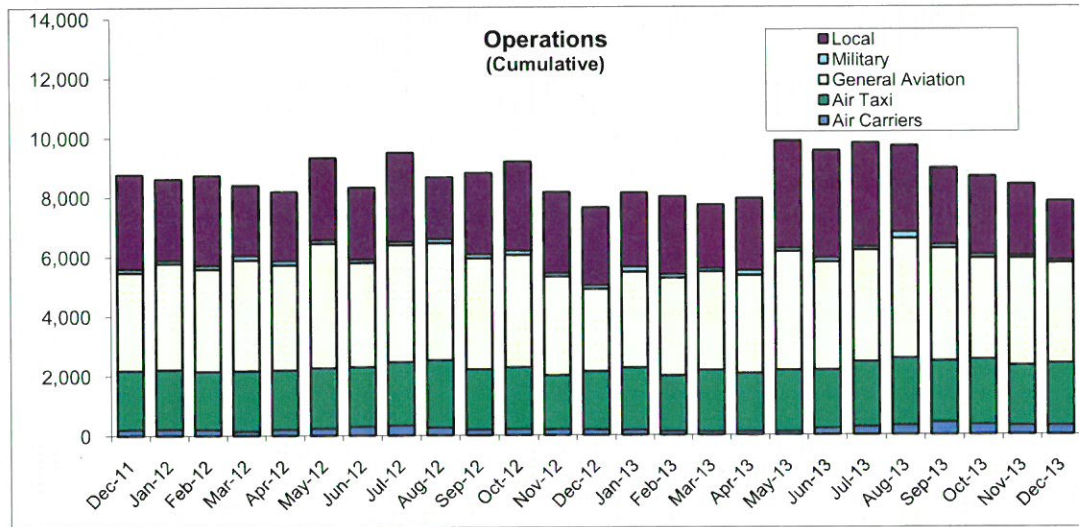
Total Departures 31

Commercial Carrier Passengers (current month vs. same month last year)



Percentage Change (current month vs. same month last year)	
American	-26%
Frontier	8%
Alaska	88%
United	5%
US Airways	10%

Operations (Cumulative)



Operations Percentage Change (current month vs. same month last year)	
Local	-24%
Military	-34%
General Aviation	22%
Air Taxi	7%
Air Carrier	64%
Total	3%

Cargo Explaned

