

# LIGHTING

| <u>NUMBER</u> | <u>TITLE</u>                                       |
|---------------|--|
| L-01.0        | LIGHT STANDARDS TYPES A, B, AND C GENERAL NOTES    |
| L-01.1        | LIGHTING STANDARD LUMINAIRE, POLE, & SPACING NOTES |
| L-02.0        | DECORATIVE POLE STANDARD TYPE A-08                 |
| L-02.1        | DECORATIVE POLE STANDARD TYPE B-08                 |
| L-02.2        | DECORATIVE POLE STANDARD TYPE C-08                 |
| L-02.3        | DECORATIVE LUMINAIRE STANDARD TYPE A-08 & B-08     |
| L-02.4        | DECORATIVE LUMINAIRE STANDARD TYPE C-08            |
| L-03.0        | POLE STANDARD TYPE A-16                            |
| L-03.1        | POLE STANDARD TYPE B-16                            |
| L-03.2        | POLE STANDARD TYPE C-16                            |
| L-03.3        | LUMINAIRE STANDARD TYPE ABC-16                     |
| L-04.0        | STATE STREET DECORATIVE LIGHT STANDARD             |
| L-05.0        | CHAPALA STREET DECORATIVE LIGHT STANDARD           |
| L-6.0         | CARRILLO STREET DECORATIVE LIGHT STANDARD          |
| L-07.0        | ELECTRIC PULL BOX                                  |
| L-08.0        | METER PEDESTAL                                     |



## LIGHTING TABLE OF CONTENTS

|                                |                |
|--------------------------------|----------------|
| REV. DATE: 12/23               | DETAIL: L-00.0 |
| APPROVED: <i>Brian D'Amico</i> |                |
| CITY ENGINEER                  |                |
| 12/20/23                       |                |
| DATE                           |                |

## NOTES:

1. Improvements constructed under this Standard shall conform to applicable portions of the Standard Specifications for Public Works Construction, latest Edition, or as identified by Manufacturer.
2. Luminaire shall be LED type, lens shall be flat polycarbonate prismatic refractor with a dark sky rating. Equals must be approved by the City Engineer. Where LED bulbs may not be used, HPS bulbs may be substituted with City Engineer's approval. A sticker indicating lamp wattage shall be placed on the underside of the arm nearest the pole. Wattages shall be as determined for LED lamps; For HPS lamps, the sticker shall be yellow with a black number, wattage shall be 70, 100, 150, or 250 for high pressure sodium. ANY AND ALL OTHER WATTAGES OR BULB TYPES SHALL BE APPROVED BY THE CITY ENGINEER IN WRITING PRIOR TO INSTALLATION.
3. See L-01.1 for pole type and luminaire selection in residential and commercial areas.
4. Light pole standards shall be manufactured by a centrifugal spinning process using aggregate consisting of black and white pieces, graded from 3/8 inch to a No. 150 sieve, and Type III portland cement conforming to ASTM Designation C150. Reinforcing steel shall consist of deformed steel bars conforming to ASTM Designation 615, and 7-strand uncoated stress-relieved prestressing cable having a minimum ultimate strength of 250,000 PSI. All reinforcing shall be spirally wrapped with cold-drawn wire. The concrete shall develop a minimum compressive strength of 3,500 PSI before removal from the mold.
5. Underground electrical conduit shall be 1-1/2 inch minimum Schedule 40 P.V.C. electrical conduit, laid with 18 inch minimum cover behind curb within one foot of the curb face, unless shown otherwise on plans. Conduit shall be bundled tightly in the center of the footing. Conduits shall terminate in footings on the same side as the conduit run. A pull box is required within 5 feet of the street light. Conduit shall be "stubbed" not less than 3 inches and not more than 4 inches above the inside surface of street light or pull box.
6. Unmetered lights - install Tron HEB-AB, HEB A-A 30-Amp 600 Volt waterproof in-line fuse and receptacle in each standard base, with a minimum of 12 inches and a maximum of 18 inches in wiring to permit fuse receptacle to be serviced outside the standard. Metered lights and lighting circuits that have circuit breakers installed shall have in-line fuses installed as well.
7. All conductor lengths shall be a minimum of 12 inches and a maximum of 18 inches inside hand holes and pull boxes. Contractor shall contact Southern California Edison Company for requirements of service installation, and shall install such service components as Edison requires to energize the system.
8. Power control point shall be the photoelectric cell (PE) located on pedestal cabinet. Multiple lights require a photo cell on meter pedestal with a by-pass switch and shorting caps on each light. Un-metered lights shall have a photocell at luminaire.
9. Foundation concrete shall be Class 560-C-3250, per Standard Specifications for Public Works Construction, latest edition.
10. All exposed steel parts shall be galvanized, stainless, or painted.
11. All power access doors shall be stainless steel and cast aluminum or equivalent. The 1/4 inch screws in the access cover shall be s.s. phillips panhead.
12. All electrical splices shall be per the latest edition of Caltrans Standard Specifications and Plans, ES-13.
13. All lights shall be tested in the presence of the Public Works Inspector prior to acceptance.
14. If 3 or more lights are to be installed, meter pedestals shall be Caltrans Type III-BF, in Malaga Green color matching the RAL Classic System color, with the following: Meter socket with test bypass facility, 100 amps, 120/240 V, #3 wire, 1 main circuit breaker, 14 KAIC, 12 circuit load center with load test switch.



# LIGHT STANDARDS

## TYPES A, B, AND C GENERAL NOTES

REV. DATE: 12/23 | DETAIL: L-01.0

APPROVED:

*Brian D'Amico*

CITY ENGINEER

12/20/23

DATE

## NOTES:

1. All new street lighting cable systems shall be underground.
2. Lighting standard and location to be approved by the Traffic Engineering Division (805) 560-7518, prior to installation.
3. Residential light standards shall be spaced on lot lines not more than two hundred-fifty (250) feet apart.
4. Where commercial or industrial lot frontages are involved, light standards shall be spaced not more than one hundred (100) feet apart.
5. All other features of street lighting systems shall meet the requirements of the Public Works Department, which shall be established to achieve safety, maximum life, low maintenance cost, adequate illumination and structural soundness.
6. All pull boxes shall be set at the back of the curb. Roadway pull boxes are for replacement purposes only.
7. All pull boxes shall be set in accordance with N.E.C. and Caltrans Standard Specifications and Plans, Latest Edition.
8. When the distance between street lights is greater than 150 feet, a pull box must be set every 150 feet for pulling wire.
9. Recommended Pole Type for Commercial or Residential use. Confirm with Traffic Engineering Division:

### Commercial

| Location     | Pole Type |
|--------------|-----------|
| Intersection | A         |
| Mid-Block    | A         |
| Sidewalk     | C         |

### Residential


| Location     | Pole Type |
|--------------|-----------|
| Intersection | B         |
| Mid-Block    | B         |
| Sidewalk     | C         |



# LIGHTING STANDARD

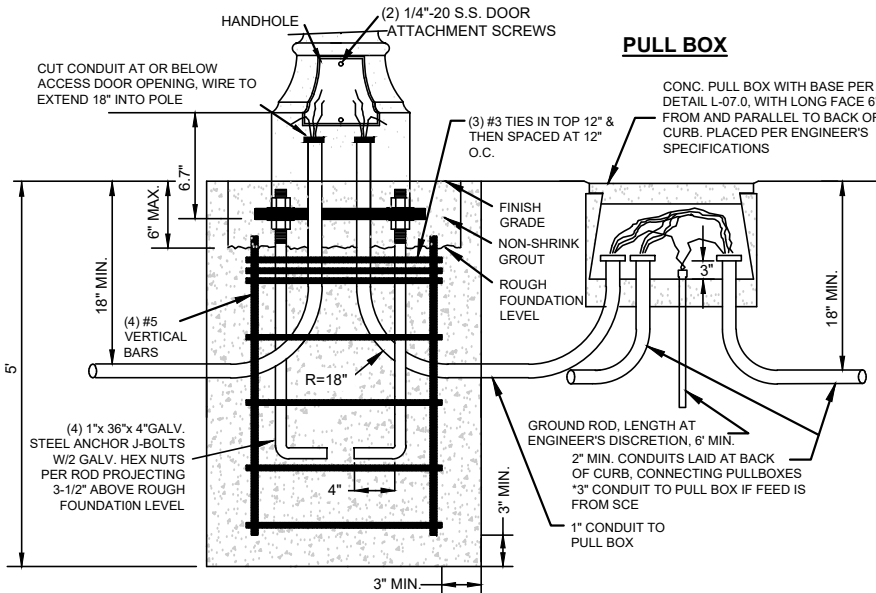
## LUMINAIRE, POLE, & SPACING NOTES

REV. DATE: 12/23 | DETAIL: L-01.1

APPROVED:   
CITY ENGINEER  
12/20/23  
DATE

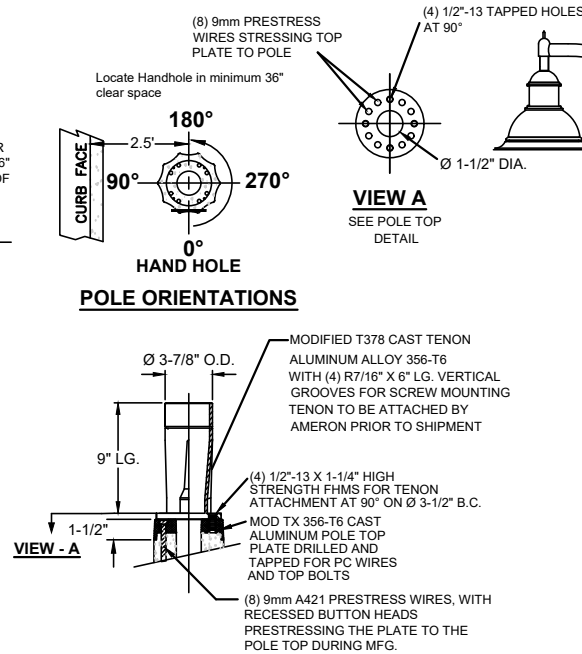
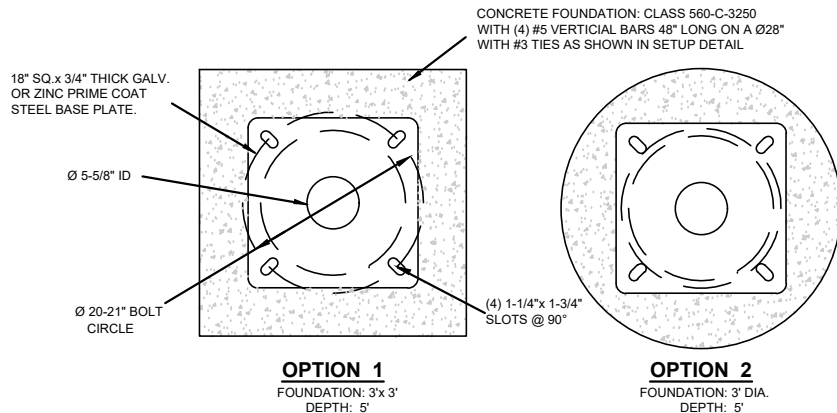
# NOTES:

- 1) Install pull box within 5' of pole.
- 2) Install ground rod in pull box.
- 3) Maximum 2 conduits per fixture. 3 conduits require adjacent pull box.
- 4) Dissimilar metals separated dielectrically.
- 5) All bolts, nuts, washers, and hardware shall be galvanized steel.
- 6) Infield borings in pole may only be in 90° increments in relation to handhole.

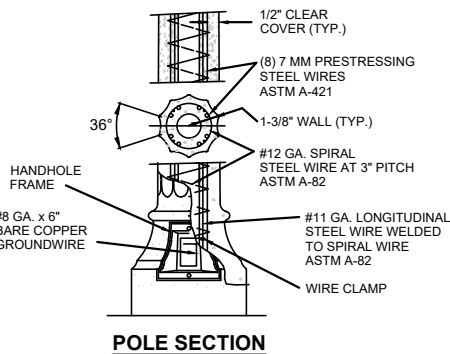


## RECOMMENDED MOUNTING SETUP DETAIL

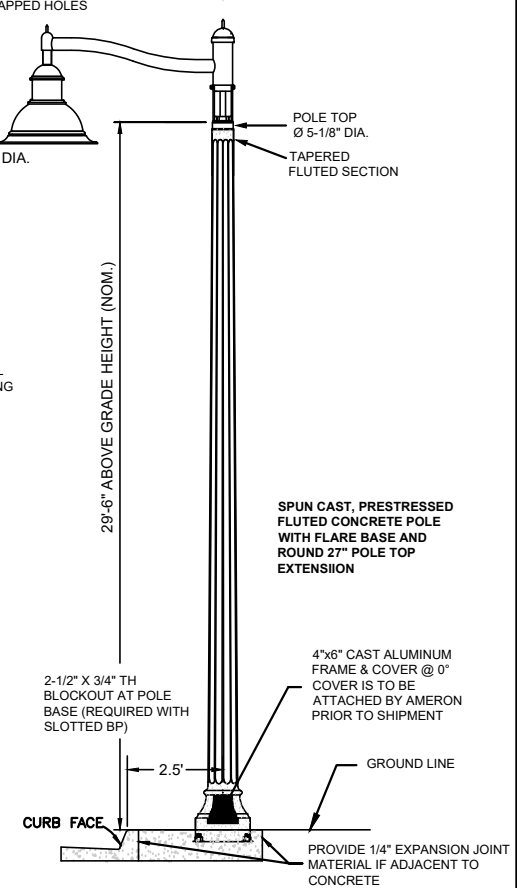
N.T.S.



## TOP MOUNT DETAIL



## VICTORIAN FLUTED POLE (wt. 1200LBS)



## NOTES:

1. Contact: Del Sol Resources, Carlsbad, CA 92008  
Ph.(760) 407-1410, <http://www.delsolresources.com>
2. Order: Pole **VBFX-9.0**, Victorian Fluted Pole, **Pole Mix (2P3S)**  
Santa Barbara Black & White exposed aggregate finish, with flat water sealer coating - ASTM C-150 TYPE III gray cement.
3. Specify Tamper Proof Door Screws.
4. Baseplate is included
5. (4) 1"x36"x4" galvanized steel bolts & hardware included.



# DECORATIVE POLE STANDARD TYPE A-08

REV. DATE: 12/23 | DETAIL: L-02.0

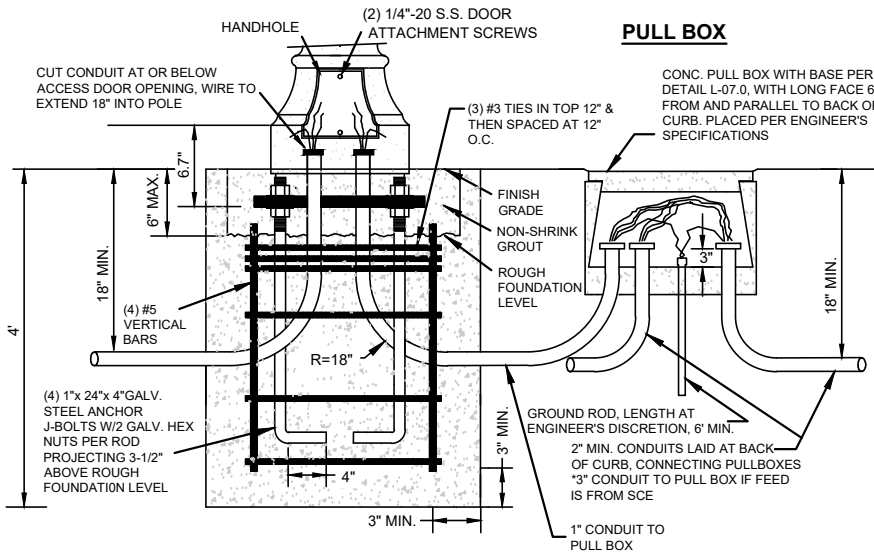
APPROVED:

*Brian D. Am*  
CITY ENGINEER  
12/20/23

DATE

# NOTES:

- 1) Install pull box within 5' of pole.
- 2) Install ground rod in pull box.
- 3) Maximum 2 conduits per fixture. 3 conduits require adjacent pull box.
- 4) Dissimilar metals separated dielectrically.
- 5) All bolts, nuts, washers, and hardware shall be galvanized steel.
- 6) Infield borings in pole may only be in 90° increments in relation to handhole.



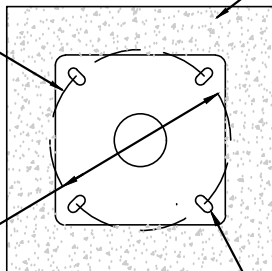
## RECOMMENDED MOUNTING SETUP DETAIL

N.T.S.

CONCRETE FOUNDATION: CLASS 560-C-3250 WITH (4) #5 VERTICAL BARS 48" LONG ON A Ø28" WITH #3 TIES AS SHOWN IN SETUP DETAIL

17" SQ. x 1" THICK GALV. OR ZINC PRIME COAT STEEL BASE PLATE. TYPE "S"

Ø 17" BOLT CIRCLE

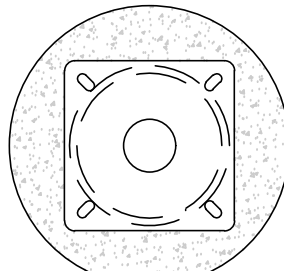


### OPTION 1

FOUNDATION: 3' x 3' DEPTH: 4'

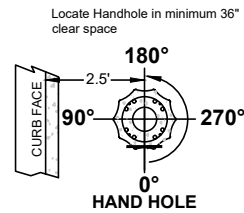
(4) 1-1/4"x 2-1/4"

SLOTS @ 90°

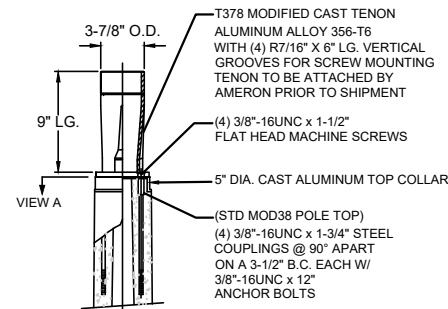


### OPTION 2

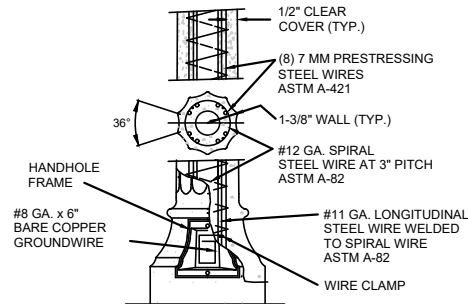
FOUNDATION: 3' DIA. DEPTH: 4'



## POLE ORIENTATIONS

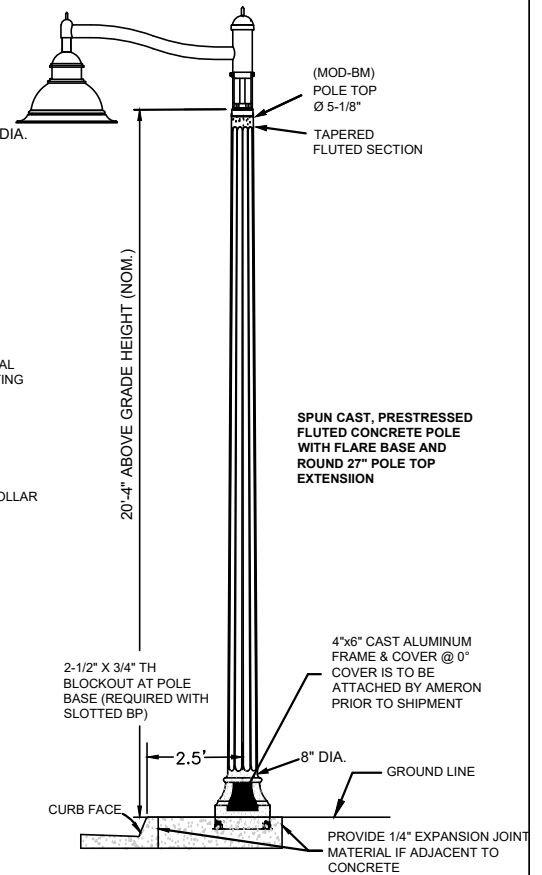


## POLE TOP DETAIL



## POLE SECTION

## VICTORIAN FLUTED POLE (wt. 800LBS)



## NOTES:

1. Contact: Del Sol Resources, Carlsbad, CA 92008 Ph.(760) 407-1410, <http://www.delsolresources.com>
2. Order: Pole **VBFO6.2SPL**, Victorian Fluted Pole, **Pole Mix (2P3S)** Santa Barbara Black & White exposed aggregate finish, with flat water sealer coating - ASTM C-150 TYPE III gray cement.
3. Specify Tamper Proof Door Screws.
4. Baseplate is included.
5. (4) 1"x24"x4" galvanized steel bolts & hardware included.



# DECORATIVE POLE STANDARD

## TYPE B-08

REV. DATE: 12/23 DETAIL: L-02.1

APPROVED:

*Brian D. Am*

CITY ENGINEER

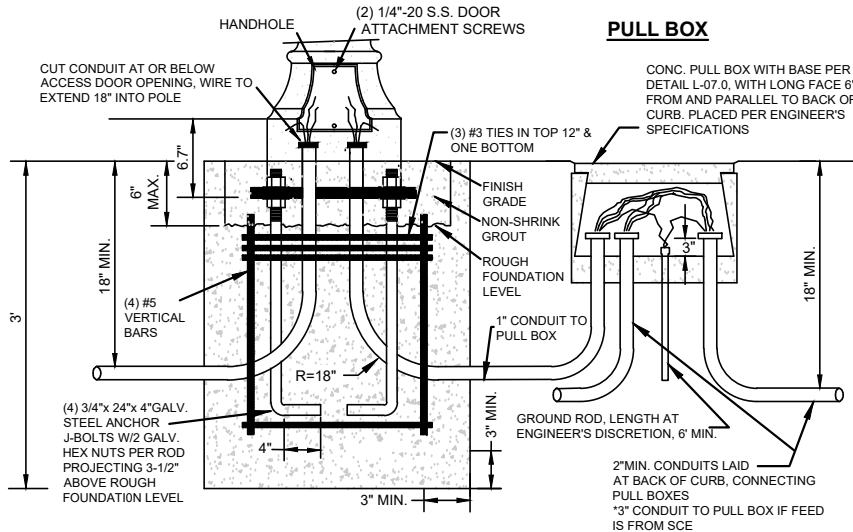
12/20/23

DATE



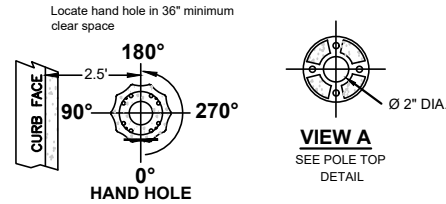
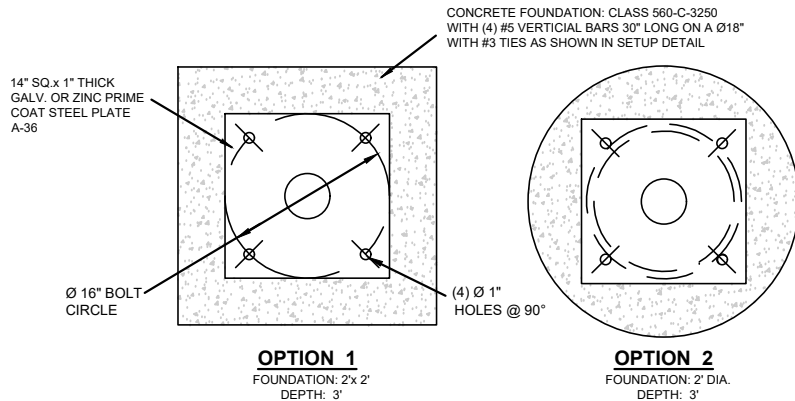
# NOTES:

- 1) Install pull box within 5' of pole.
- 2) Install ground rod in pull box.
- 3) Maximum 2 conduits per fixture. 3 conduits require adjacent pull box.
- 4) Dissimilar metals separated dielectrically.
- 5) All bolts, nuts, washers, and hardware shall be galvanized steel.
- 6) Infield borings in pole may only be in 90° increments in relation to handhole.

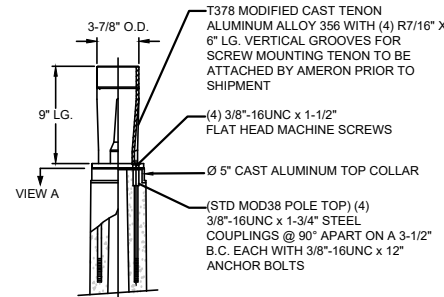


## RECOMMENDED MOUNTING SETUP DETAIL

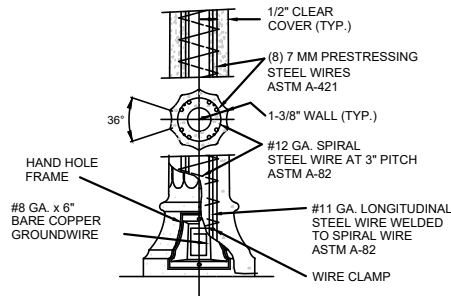
N.T.S.



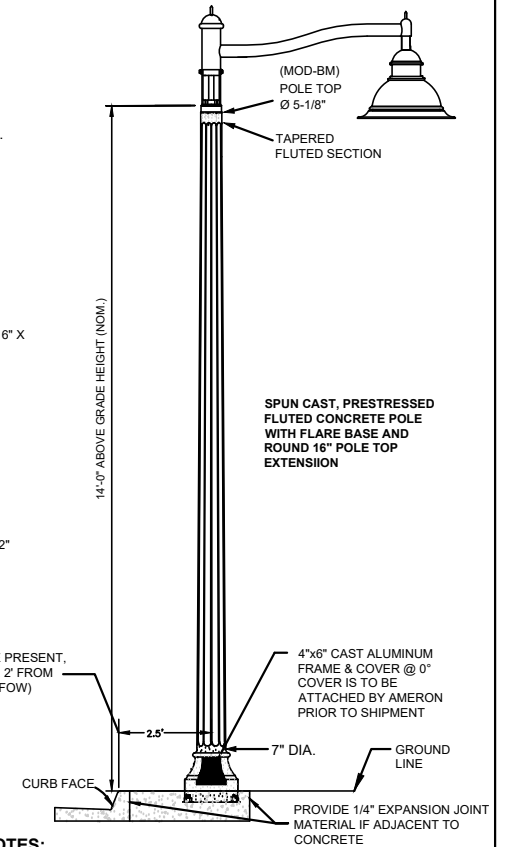
## POLE TOP DETAIL



## POLE SECTION



## VICTORIAN FLUTED POLE (wt. 500LBS)



## NOTES:

1. Contact: Del Sol Resources, Carlsbad, CA 92008 Ph.(760) 407-1410, <http://www.delsolresources.com>
2. Order: Pole **VBFO4.7SPL**, Victorian Fluted Pole, Pole Mix (2P3S) Santa Barbara Black & White exposed aggregate finish, with flat water sealer coating - ASTM C-150 TYPE III gray cement.
3. Specify Tamper Proof Door Screws.
4. Baseplate is included.
5. (4) 3/4"x24"x4" galvanized steel bolts & hardware included.
6. MOD-BM: Plug down pole length to 14'-3" OAL.



# DECORATIVE POLE STANDARD TYPE C-08

REV. DATE: 12/23 DETAIL: L-02.2

APPROVED:

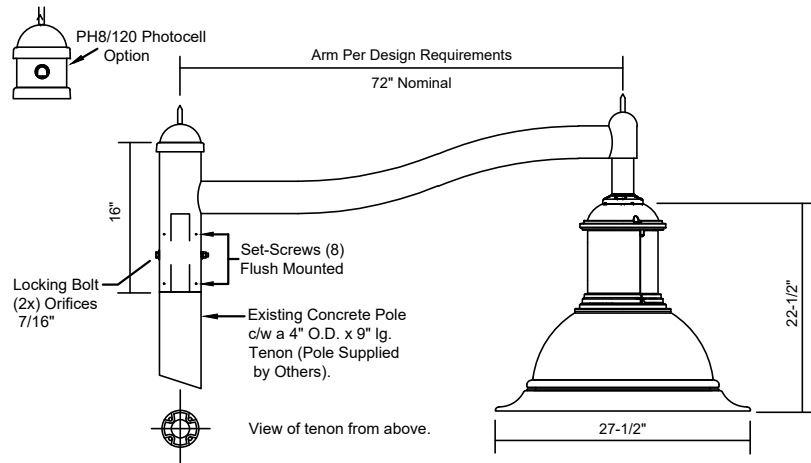
*Brian D. Allen*

CITY ENGINEER

12/20/23

DATE

## Description of Components:



**Post Top Arm:** Standard - 6'  
Optional - 8', 10', 12' (by contract)

**Lamp:** As specified by Contract requirements. Default shall be LED type. Dark Sky friendly.

**Optical System:** Flat lens, light distribution varies.

**Electrical:** Connected to 120 volts. Assembled on a unitized removable tray with quick disconnect plug.

**Mounting:** Made of aluminum tubing, 4 1/2" outside diameter, slip fits over a 4" diameter by 9" long pole tenon, mechanically fastened by two levels of 3/8"-16 UNC set-screws & a 3/8" locking bolt.

**Photo Cell:** Twist lock type photocell, 120 volts, complete with an orientable cover. (Optional) Preferred to be at meter.

**Hardware:** All exposed screws will be in stainless steel. All seals and sealing devices are made and/or lined with EPDM and/or silicone.

**Finish:** Lumec custom color **PS311G128 Malaga Green** (SCZT311G151TX) or matching RAL Classic System color.

## ORDERING INFORMATION based on Pole Type and usage

### Commercial

| Location      | Pole Type | Order Part # : LED**  |
|---------------|-----------|---|
| Intersection* | A         | LED: DMS55-135W80LED3K-G3-LE3F-120-(B-LCP-031)-1A-SCZT311G151TX |
| Mid-Block     | A         | LED: DMS55-135W80LED3K-G3-LE2F-120-(B-LCP-031)-1A-SCZT311G151TX |

### Residential

| Location      | Pole Type | Order Part # : LED**   |
|---------------|-----------|--|
| Intersection* | B         | LED: DMS55-70W64LED3K-G3-LE3F-120-DMG-(B-LCP-031)-1A-SCZT311G151TX |
| Mid-Block     | B         | LED: DMS55-35W32LED3K-G3-LE3F-120-DMG-(B-LCP-031)-1A-SCZT311G151TX |

\*In residential and commercial areas where there are two lights diagonal from each other across an intersection, Lower Watt LED may be used per City Engineer Approval or designee. Alternate Output 100 W

Commercial: DMS55-70W64LED3K-G3-LE3F-120-(B-LCP-031)-1A-SCZT311G151TX  
Residential: DMS55-35W32LED3K-G3-LE3F-120-DMG-SCZT311G151TX

\*\*Due to rapid and continuous advances in LED technology, LED Luminaire data is subject to change without notice and at discretion of the Manufacturer. Submission of this City Standard to California Electric Supply will fulfill contract requirement for the specified Order Part# as directed.

### NOTES:

1. Contact: California Electric Supply, Ph. (805) 962-9114, <http://www.cessb.shopced.com>
2. Order: Luminaire as specified by contract and request arm length as specified by contract.
3. Post Top, Arm, and installation hardware, including 3/8" locking bolt, to be provided by manufacturer.
4. 7/16" hole to be drilled in Post Top by Contractor.
5. 7/16" bore hole thru pole tenon for locking bolt to be drilled by Contractor.
6. Post Top & Arm alignment typically perpendicular to curbface, must be prior approved by Project Engineer.
7. Optical system to be aligned in field per Manufacturers Streetside direction label identified in fixture.
8. A sticker indicating lamp wattage shall be placed on the underside of the arm nearest the pole.



# DECORATIVE LUMINAIRE

## STANDARD TYPE A-08 & TYPE B-08

REV. DATE: 12/23 DETAIL: L-02.3

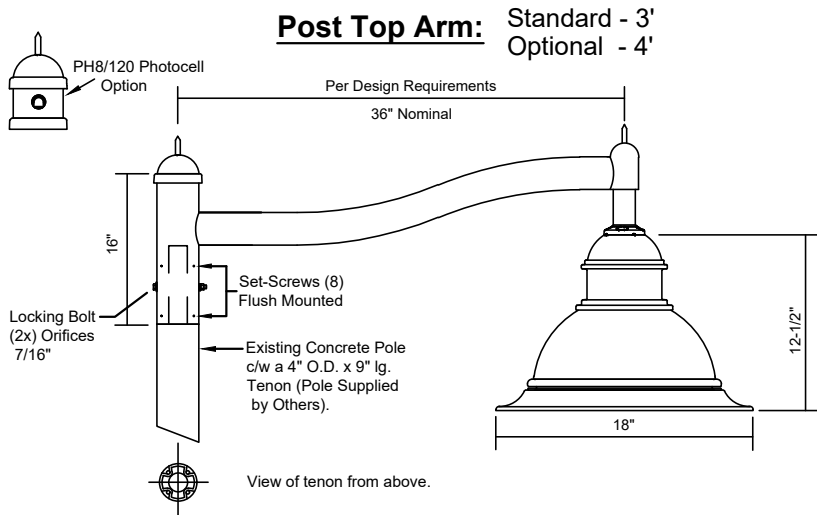
APPROVED:

*Brian D'Amico*

CITY ENGINEER

12/20/23

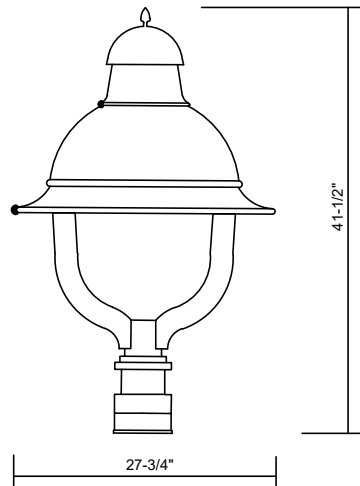
DATE



#### ORDERING INFORMATION based on Pole Type and usage:

Type C-08 Pole For Sidewalk Order:  
DOS-35W32LED3K-T-LE2F-120-(B-LCP-030)-1A-TS-SCZT311G151TX\*\*

#### Post Top Luminaire - Special Order



#### ORDERING INFORMATION POST TOP LUMINAIRE:

DMS60 with Flat Lens

#### NOTES:

1. Luminaire typically used for Street lighting.
2. Use with Decorative Type C-08 pole Modified 12ft height or as specified by contract.
3. Confirm Post Top Tenon size.
4. Contact California Electric Supply for additional information if needed.

#### ORDERING INFORMATION based on Pole Type and usage:

Type C-08 Pole Order:  
DMS60-35W32LED3K-T-ACDR-LE2F-120-1A-TS-SCZT311G151TX\*\*

#### Description of Components:

**Lamp:** As specified by Contract Requirements. Default shall be LED type.

**Optical System:** (SG2), I.E.S. type II (asymmetrical). Reflector composed of a chemically brightened multi-faceted anodized aluminum, mounted on a white frame. This assembly allows for a full rotation of the optical system in 90 degree increments.

**Ballast:** Matching Ballast included with Lamp. Connected to 120 volts. Assembled on a unitized removable tray with quick disconnect plug.

**Access-Mechanism:** A die cast A380 aluminum technical ring with a cast-in decorative skirt. An integrated hinge and a captive knurled thumb screw offer a tool free access to the inside of the luminaire and to the lamp. An embedded memory-retentive gasket shall ensure weatherproofing.

**Central Tubing:** Made of aluminum tubing, 4 1/2" outside diameter, slip fits over a 4" diameter by 9" long pole tenon, mechanically fastened by two levels of 3/8" -16 UNC sets-screws.

**Photo Cell:** Twist lock type photocell, 120 volts, complete with an orientable cover. (Optional)

**Hardware:** All exposed screws will be in stainless steel. All seals and sealing devices are made and/or lined with EPDM and/or silicone.

**Finish:** Lumec custom color **PS311G128 Malaga Green** (SCZT311G151TX).

#### NOTES:

1. Contact: California Electric Supply, Ph. (805) 962-9114, <http://www.cessb.shopced.com>
2. Order: Luminaire as specified by contract and request arm length as specified by contract.
3. Post Top, Arm, and installation hardware, including 3/8" locking bolt, to be provided by manufacturer.
4. 7/16" hole to be drilled in Post Top by Contractor.
5. 7/16" bore hole thru pole tenon for locking bolt to be drilled by Contractor.
6. Post Top & Arm, and Mid Pole Bracket alignment typically perpendicular to curbface, must be prior approved by Project Engineer.
7. Optical system to be aligned in field per Manufacturers Streetside direction label identified in fixture.
8. A sticker indicating lamp wattage shall be placed on the underside of the arm nearest the pole.

\*\*Due to rapid and continuous advances in LED technology, LED Luminaire data is subject to change without notice and at discretion of the Manufacturer. Submission of this City Standard to California Electric Supply will fulfill contract requirement for specified Order Part# as directed.



# DECORATIVE LUMINAIRE

## STANDARD TYPE C-08

REV. DATE: 12/23 DETAIL: L-02.4

APPROVED:

*Brain Damm*

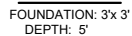
CITY ENGINEER

12/20/23

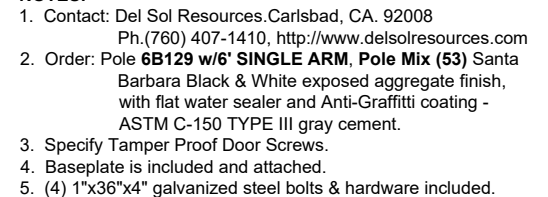
DATE



- 1) Install pull box within 5' of pole.
- 2) Install ground rod in pull box.
- 3) Maximum 2 conduits per fixture. 3 conduits require adjacent pull box.
- 4) Dissimilar metals separated dielectrically.
- 5) All bolts, nuts, washers, and hardware shall be galvanized steel.
- 6) Infield borings in pole may only be in 90° increments in relation to handhole.

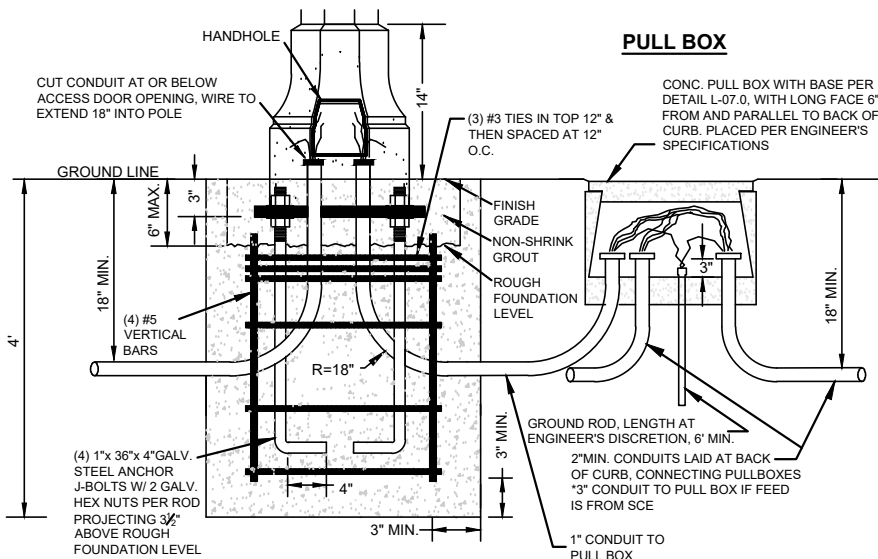


FOUNDATION: 3' DIA.  
DEPTH: 5'



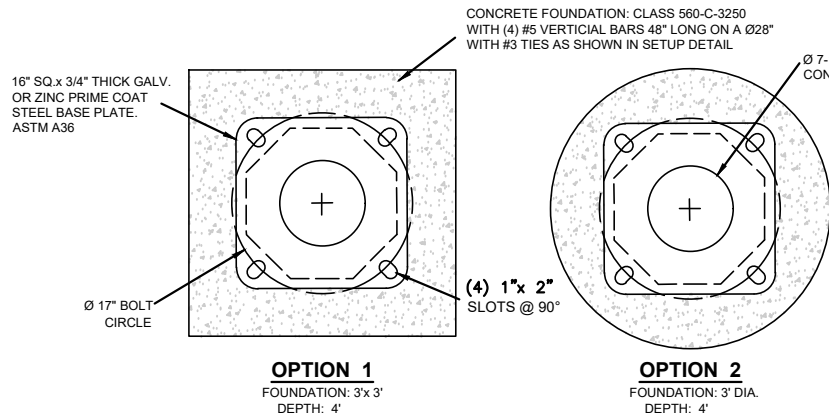
# NOTES:

- 1) Install pull box within 5' of pole.
- 2) Install ground rod in pull box.
- 3) Maximum 2 conduits per fixture. 3 conduits require adjacent pull box.
- 4) Dissimilar metals separated dielectrically.
- 5) All bolts, nuts, washers, and hardware shall be galvanized steel.
- 6) Infield borings in pole may only be in 90° increments in relation to handhole.



## RECOMMENDED MOUNTING SETUP DETAIL

N.T.S.

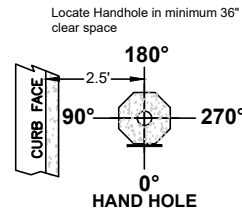


### OPTION 1

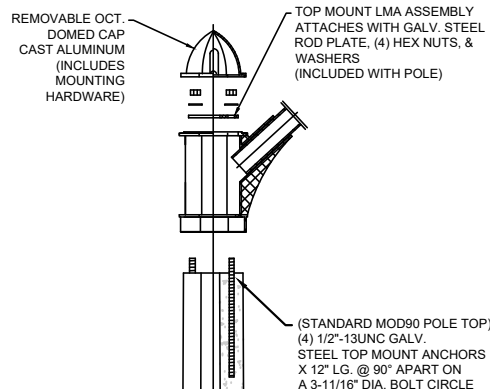
FOUNDATION: 3'x3'  
DEPTH: 4'

### OPTION 2

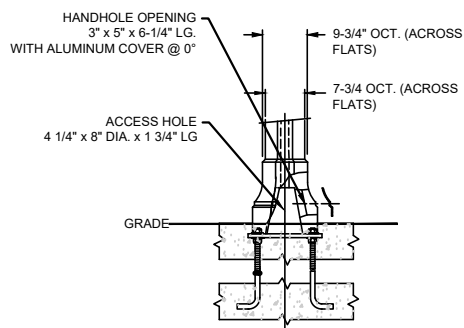
FOUNDATION: 3' DIA.  
DEPTH: 4'



## POLE ORIENTATIONS

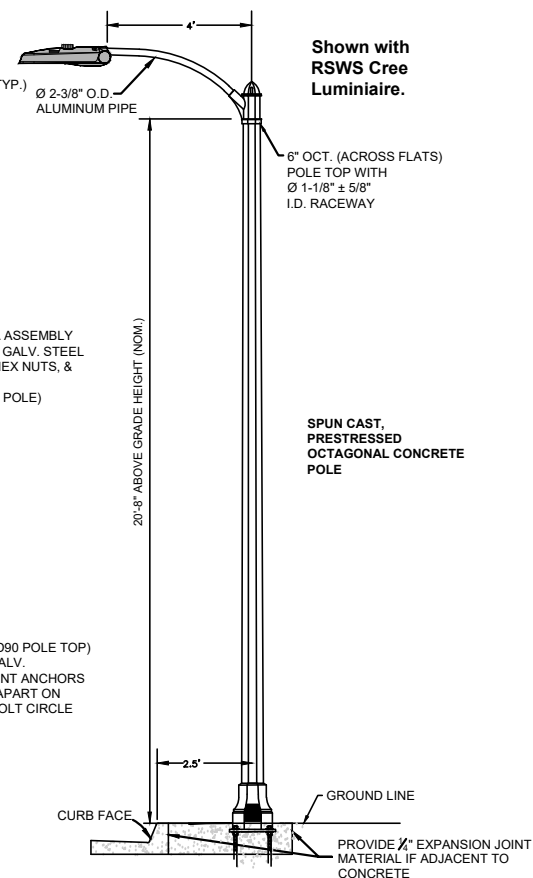


## POLE TOP DETAIL



## POLE SECTION

## OCTAGONAL FLAT SIDED POLE (wt. 750LBS)



## NOTES:

1. Contact: Del Sol Resources, Carlsbad, CA. 92008  
Ph. (760) 407-1410 <http://www.delsolresources.com>
2. Order: Pole 4B120 w/4' SINGLE ARM, Pole Mix (53) Santa Barbara Black & White exposed aggregate finish, with flat water sealer and Anti-Graffiti coating - ASTM C-150 TYPE III gray cement.
3. Specify Tamper Proof Door Screws.
4. Baseplate is included and attached.
5. (4) 1"x36"x4" galvanized steel bolts & hardware included.

RSWS Luminair as shown is Not Included.



# POLE STANDARD

## TYPE B-16

REV. DATE: 12/23 DETAIL: L-03.1

APPROVED:

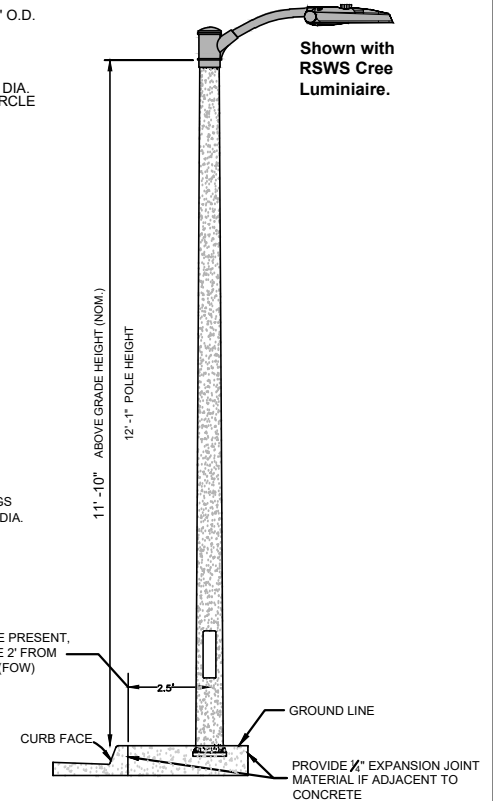
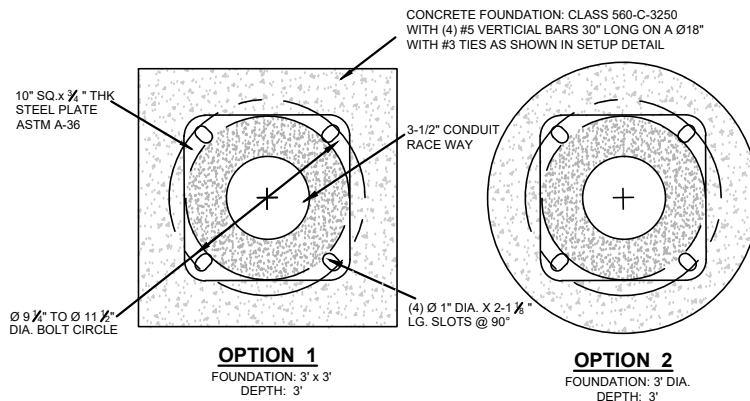
*Brain D'Amico*

CITY ENGINEER

12/20/23

DATE

- 1) Install pull box within 5' of pole.
- 2) Install ground rod in pull box.
- 3) Maximum 2 conduits per fixture. 3 conduits require adjacent pull box.
- 4) Dissimilar metals separated dielectrically.
- 5) All bolts, nuts, washers, and hardware shall be galvanized steel.



1. Contact: Del Sol Resources, Carlsbad, CA. 92008  
Ph. (760) 407-1410 <http://www.delsolresources.com>
2. Order: Pole **1C612SPL w/2' SINGLE ARM, Pole Mix (5331)**  
Santa Barbara Black & White exposed aggregate  
finish, with Anti-Graffiti Amershiel coating - ASTM  
C-150 TYPE III gray cement.
3. Specify Tamper Proof Door Screws.
4. Baseplate is included and attached.
5. (4) 3/4"x18"x4" galvanized steel J-bolts & hardware included.

RSWS Luminair as shown is Not Included.



# POLE STANDARD

## TYPE C-16

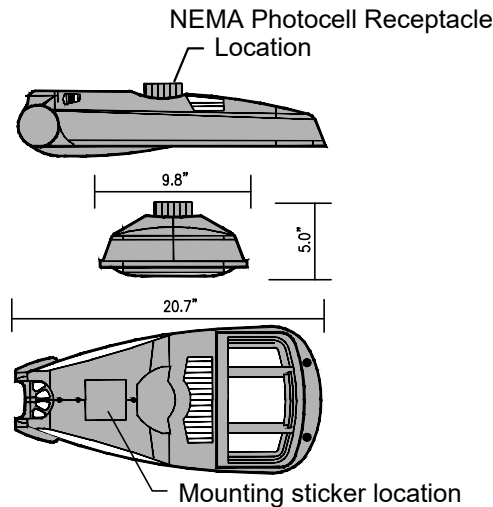
|                  |                |
|------------------|----------------|
| REV. DATE: 12/23 | DETAIL: L-03.2 |
|------------------|----------------|

APPROVED:

CITY ENGINEER

12/20/23

DATE \_\_\_\_\_



**ORDERING INFORMATION** based on Pole Type and usage, include Accessory Backlight shielding:

**Type A-16 Pole:**

For Intersections Order:

**RSWS-B-HT-3ME-5L-30K7-UL-GY-N-Q (Q4)**

**Type B-16 Pole:**

For Residential Intersection Order:

**RSWS-B-HT-3ME-5L-30K7-UL-GY-N-Q (Q4)**

For Residential Mid-Block Order:

**RSWS-B-HT-2ME-5L-30K7-UL-GY-N-Q (Q4)**

**Type C-16 Pole:**

For Residential Sidewalk Order:

**RSWS-B-HT-2ME-5L-30K7-UL-GY-N-Q (Q4)**

**Accessories:**

Backlight control shield: **RSW-BLSS**

- Provides ½ mounting height cutoff.

**GENERAL INFORMATION:**

RSWS LED lighting is intended for use on the City Standard Type A-16, B-16, & C-16 concrete poles. RSWS Lighting will not be installed on decorative fluted poles, but may be used to replace existing Cobra Head luminaires based on Pole Height and Usage. NEMA Photocell to be installed.

**Description of Components:**

**Lamp:** is an RSWS using a 50W Series LED Street/Area light - Small. Dark Sky Friendly. Includes an optional "Q" field adjustable Lumen Output that will determine Label Wattage(see Manufactures spec sheet for in-field setting), to be included as Standard unless specified otherwise by Contract requirements.

**Optics:** Vary. Back Light Shielding is an Accessory to be included as Standard unless specified otherwise by Contract requirements.

**Electrical:** 120-277V, 50/60Hz 0 with Class 2 Driver, intergral 10kV surge suppression standard. 10V Source current: 0.25mA. CRI: 70 CRI (3000K). To address inrush current, slow blow fuse or type C/D breaker should be used.

**Mounting:** mounts on 1.25"(32mm) IP, 1.66"(42mm) O.D., 2"(51mm) IP, 2.375"(60mm) O.D. horizontal tenon minimum 8" in length and is adjustable  $\pm 5^\circ$  to allow for fixture leveling. Secures with two mounting bolts.

**Construction & Materials:** High strength, lightweight bulk molding compound; UV stabilized polymeric door with tool-less entry.

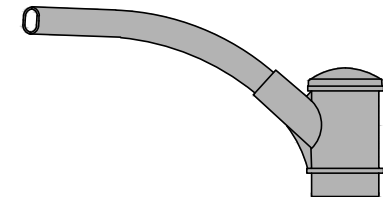
**Color:** Grey

**Weight:** 8.45 lbs.

**6' MAST ARM** (Standard w/Type A-16 pole)

**4' MAST ARM** (Standard w/Type B-16 pole)

**2' MAST ARM** (Standard w/Type C-16 pole)\*  
\*Modified Bent Arm



**NOTES:**

1. Contact: California Electric Supply, (805) 962-9114, <http://www.cessb.shopced.com>
2. Order: Luminaire to include Backlight Shielding.
3. Installation hardware to be provided by manufacturer.
4. NEMA Photo cell or Shorting Cap will be supplied and installed by Contractor, as specified by Contract Requirements.
5. Mast Arm provided by others.
6. Luminaire alignment typically perpendicular to walkway surface, and set to a zero level, must be prior approved by Project Engineer.



# LUMINAIRE STANDARD

## TYPE A-16, B-16, & C-16

REV. DATE: 12/23 DETAIL: L-03.3

APPROVED:

*Brian D'Amico*

CITY ENGINEER

12/20/23

DATE

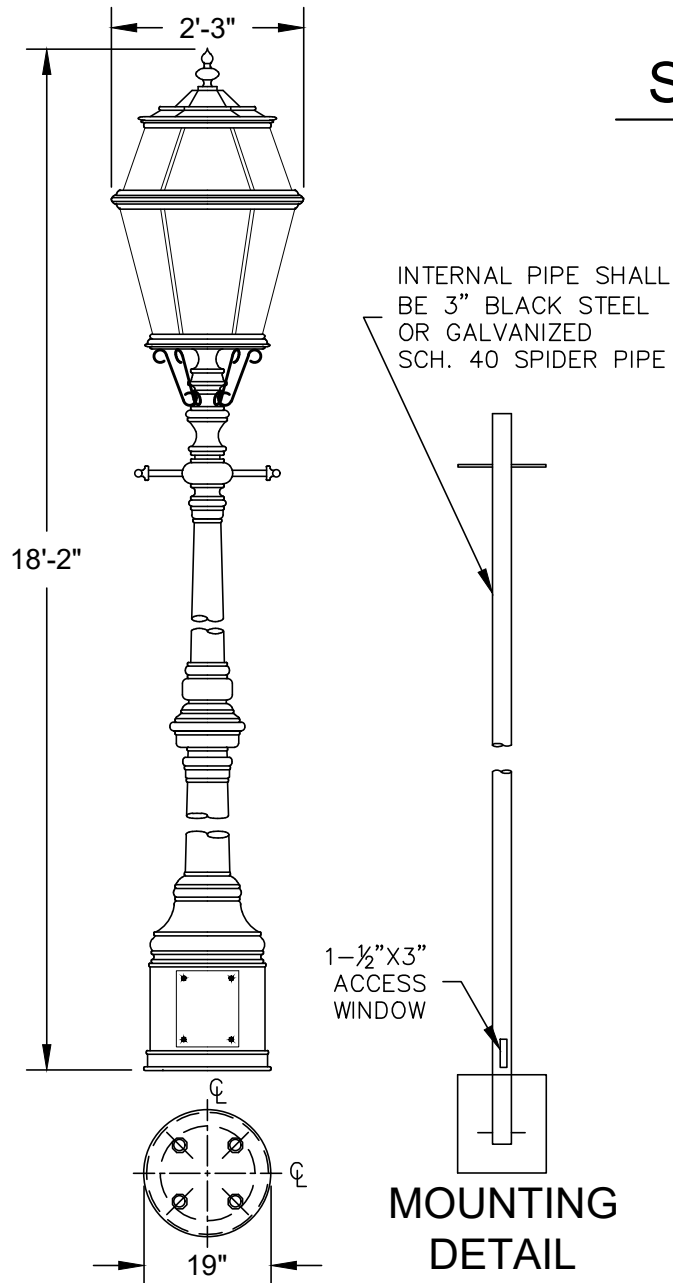
# STATE STREET ORNAMENTAL PARTS LIST

FOR PROPRIETY CITY LIGHTING WITH CITY OWNED MOULDS.  
CONTACT FACILITIES MAINTENANCE FOR VENDOR IDENTIFICATION.

| PART NUMBER | PART NAME                               | # OF PIECES PER STD. |
|-------------|---|----------------------|
| 27-90723    | TOP RING                                | 1                    |
| 23-64831    | CENTER RING                             | 1                    |
| 23-64820    | BOTTOM RING                             | 1                    |
| 23-79760    | SHORT STAVE                             | 6                    |
| 23-70903    | LONG STAVE                              | 6                    |
| 23-90700    | TOP COVER                               | 1                    |
| 23-90720    | TOP ORNAMENT                            | 1                    |
| P-28-82-01  | BASE CASTING                            | 1                    |
| P-28-82-02  | LOWER RISER TUBE 6"                     | 1                    |
| P-28-82-03  | CENTER CASTING                          | 1                    |
| P-28-82-04  | UPPER RISER TUBE                        | 1                    |
| P-28-82-05  | TOP CASTING                             | 1                    |
| P-28-82-06  | TOP PLATE LAMP MOUNT                    | 1                    |
| P-28-82-07  | ORNAMENTAL "S"                          | 6                    |
| P-28-82-08  | LADDER SUPPORT ARMS                     | 2                    |
| N/A         | GLASS REFRACTOR W/MOUNT (CITY SUPPLIED) | 1                    |
| N/A         | SMALL LEXAN LENS                        | 6                    |
| N/A         | LARGE LEXAN LENS                        | 6                    |

## NOTES:

1. FOR FOOTING, SEE CITY STANDARD L-02.0 RECOMMENDED MOUNTING SETUP DETAIL (TYPE B)
2. CONTACT CITY BUILDING MAINTENANCE AT (805) 564-5415 FOR LIGHT STANDARD INFORMATION.
3. "MALAGA GREEN" COLOR SHALL MATCH THAT OF THE RAL CLASSIC SYSTEM COLOR RAL6005.



## STATE STREET DECORATIVE LIGHT STANDARD

REV. DATE: 12/23 | DETAIL: L-04.0

APPROVED:

CITY ENGINEER

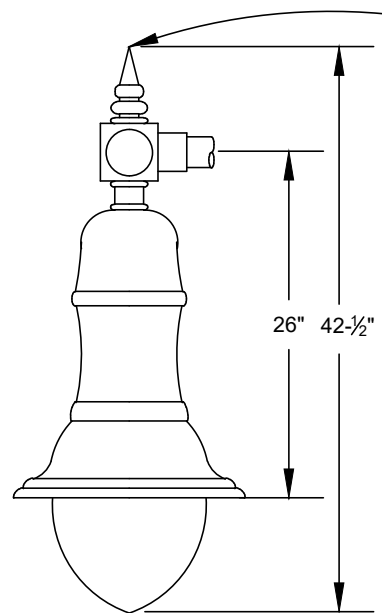
*Brian D'Amico*

12/20/23

DATE





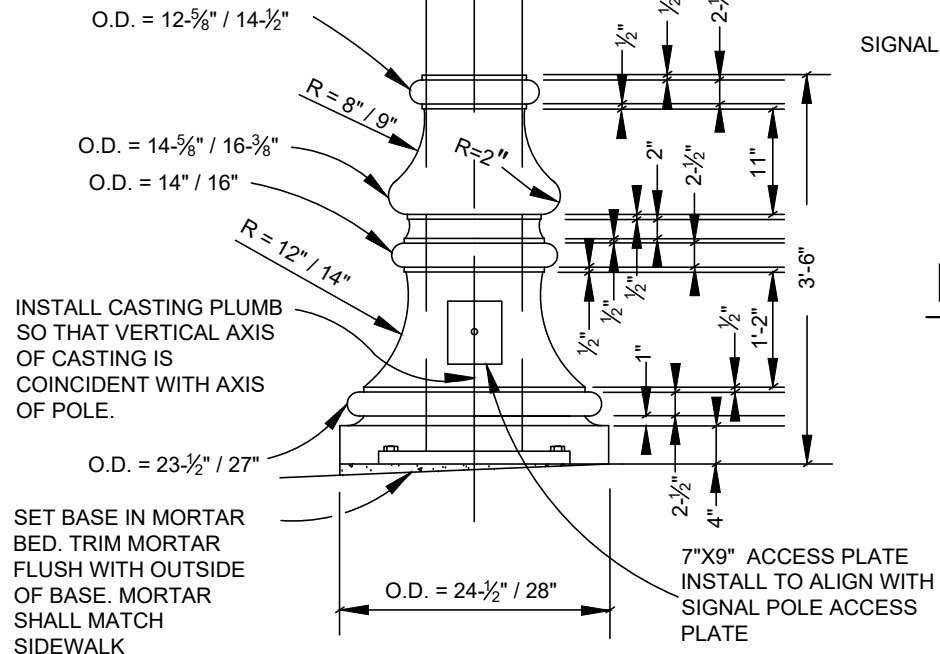


# HANGING LIGHT FIXTURE

NOT TO SCALE

WELSBACK LIGHTING FIXTURE  
NO. T7PH39D3/SB. PAINT "MALAGA  
GREEN" COLOR MATCHING THE RAL  
CLASSIC SYSTEM COLOR "RAL6005"

DIMENSION KEY  
TYPE 17A/TYPE 19A

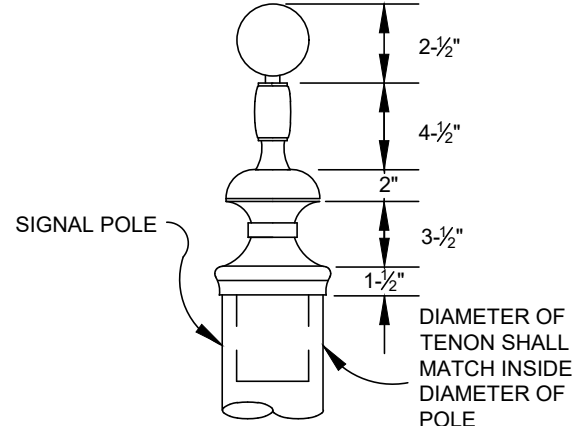


# CAST BASE DETAIL

NOT TO SCALE

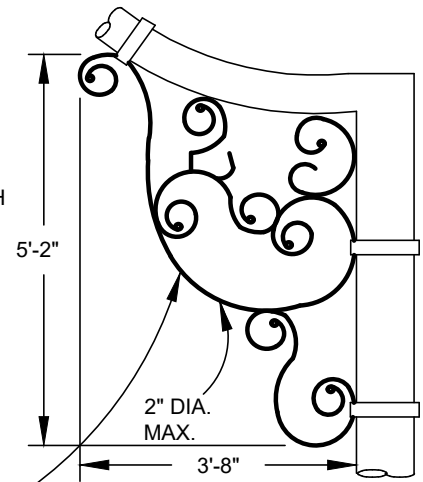
## NOTES:

1. Pole is the standard Caltrans type, painted "Malaga Green" color matching the RAL Classic System color "RAL6005"
2. Light standard is 30 feet tall from the sidewalk to the base of the finial.
3. For foundation, see Standard Detail L-01.1 Recommended Mounting Setup Detail.



# FINIAL DETAIL

NOT TO SCALE



# DECORATIVE BRACKET

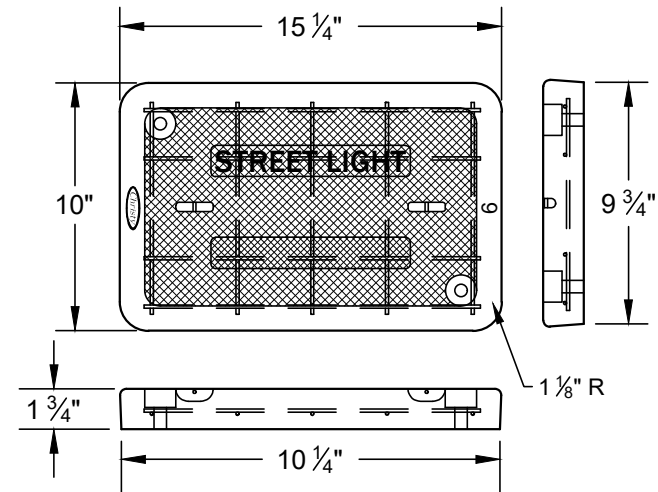
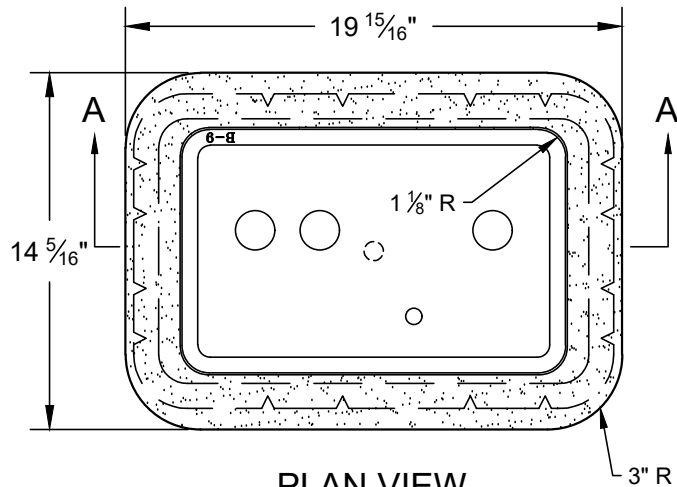
NOT TO SCALE

CAST ALUMINUM BRACKET.  
PAINT "MALAGA GREEN" COLOR  
MATCHING THE RAL CLASSIC  
SYSTEM COLOR "RAL6005"



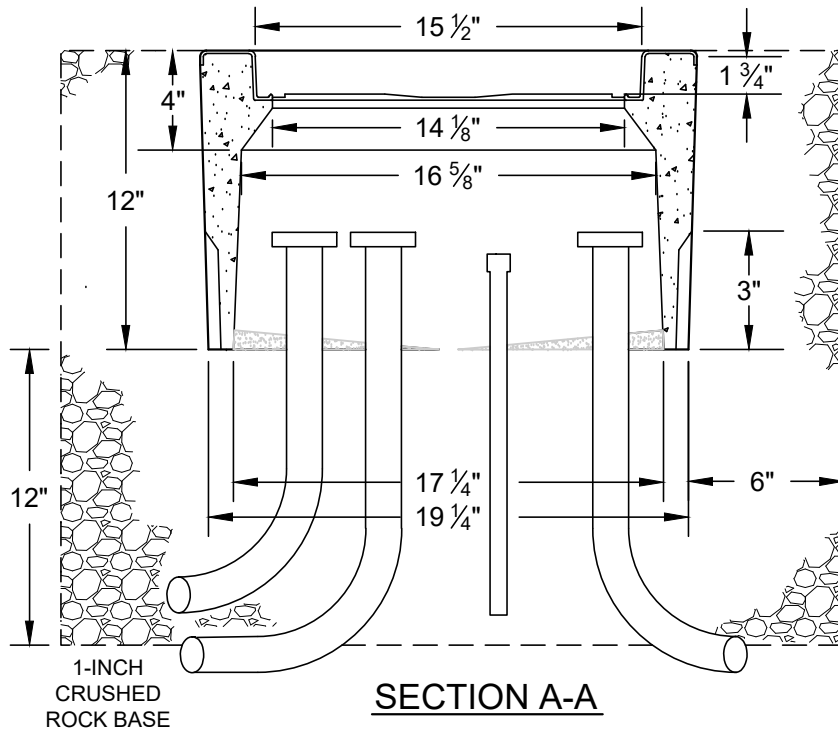
# CARRILLO STREET DECORATIVE LIGHT STANDARD

|                  |                                |                |
|------------------|--------------------------------|----------------|
| STREETS:         | REV. DATE: 12/23               | DETAIL: L-06.0 |
| TRANS OPS:       | APPROVED: <i>Brian D'Amico</i> |                |
| FACILITIES:      | CITY ENGINEER                  |                |
| WATER RESOURCES: | 12/20/23                       |                |
|                  | DATE                           |                |



#### NOTES:

1. Typical installation within 5 feet of pole.
2. Pull box shall be Christy N9 pull box with FL09T skid resistant Fibrelyte lid with bolt downs unless otherwise specified.
3. Bottom of pull box shall rest firmly on a 12 inch thick bed of 1 inch crushed rock extending 6 inches beyond the outside walls of the box.
4. Bottom of box shall be grouted and grout shall be slope towards a center drainage hole.
5. Ground rod shall be installed when pull box connects to street light.
6. Conduits into pull box shall be installed per Caltrans Standard Details. Conduits shall not protrude more than 3" inside box and must enter at an angle not less than 10 degrees from the vertical access.
7. Unused conduits must be taped to prevent debris from entering. If conduit is occupied with conductors, the conduit must be duct sealed.



# STREET LIGHT PULL BOX

REV. DATE: 12/23 DETAIL: L-07.0

APPROVED:

*Brian D'Amico*

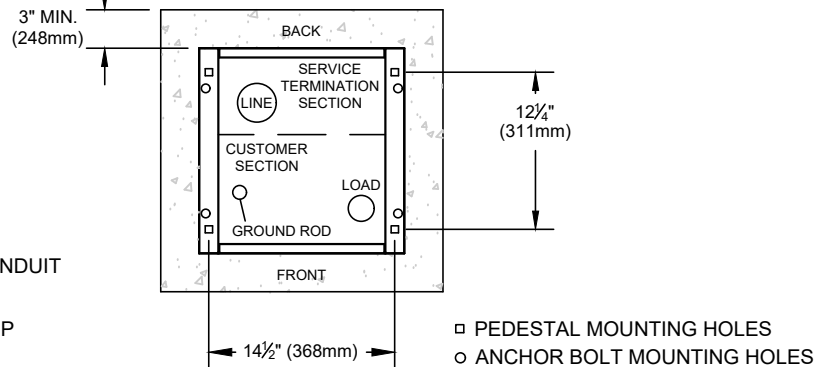
CITY ENGINEER

12/20/23

DATE



1. Control cabinet shall be U/L listed "Industrial Control Panel" per UL 508 and be Caltrans Type III-BF Enclosure.
2. Construction shall be NEMA 3R.
3. Voltage ratings of service equipment shall conform to the service voltages indicated on the plans,
4. Service equipment enclosure and metering equipment shall meet the requirements of the serving utility. When the serving utility provides both metered and unmetered circuits, a separate bus shall be provided for each circuit. The meter area shall have a sealable, lockable, raintight cover that can be removed without the use of tools.
5. Service equipment shall be factory wired and conform to NEMA standards.
6. The exterior door shall have provisions for padlocking. The padlock hole shall be a minimum diameter of 11mm.
7. All terminals for incoming service conductors shall be compatible with either copper or aluminum conductors sized to suit the conductors shown on the plan. Terminal lugs shall be copper or tin-plated aluminum. Solid neutral terminal strip shall be rated 125A unless otherwise specified and for use with copper or aluminum conductors. The terminal should include but not limited to:
  - A. Incoming terminals (landing lugs)
  - B. Neutral lugs
  - C. Solid neutral terminal strip
  - D. Terminal strips for conductors within the enclosure
8. At least 6 standard single pole circuit breaker spaces (20 mm nominal) shall be provided for branch circuits. Circuit breaker interiors shall be copper. Interiors shall accept plug-in BR Type circuit breakers.
9. Plug-in circuit breakers may be mounted in the vertical or horizontal position. Cable-in/cable-out circuit breakers shall be mounted in the vertical position.
10. Fasteners on the exterior of the enclosure shall be vandal resistant and shall not be removable from the exterior. All nuts, bolts, screws, washers, and hinges shall be stainless steel.
11. Phenolic name plates shall be provided as required.
12. A plastic covered wiring diagram shall be attached to the inside of the front door.
13. Foundation shall be 24"x24"x24" and extend 3" (76mm) beyond edges of enclosure and extend 3" (76 mm) beyond Finished Grade.
14. There shall be at least 36" (914mm) clearance at front and back of meter pedestal as required per N.E.C. 110-16.
15. Directional placement shall be at discretion of inspector.
16. Exterior color of meter pedestal shall be "Malaga Green" .



# METER PEDESTAL

|                  |                |
|------------------|----------------|
| REV. DATE: 12/23 | DETAIL: L-08.0 |
|------------------|----------------|

0: Brian D'Am

12/20/23

DATE \_\_\_\_\_