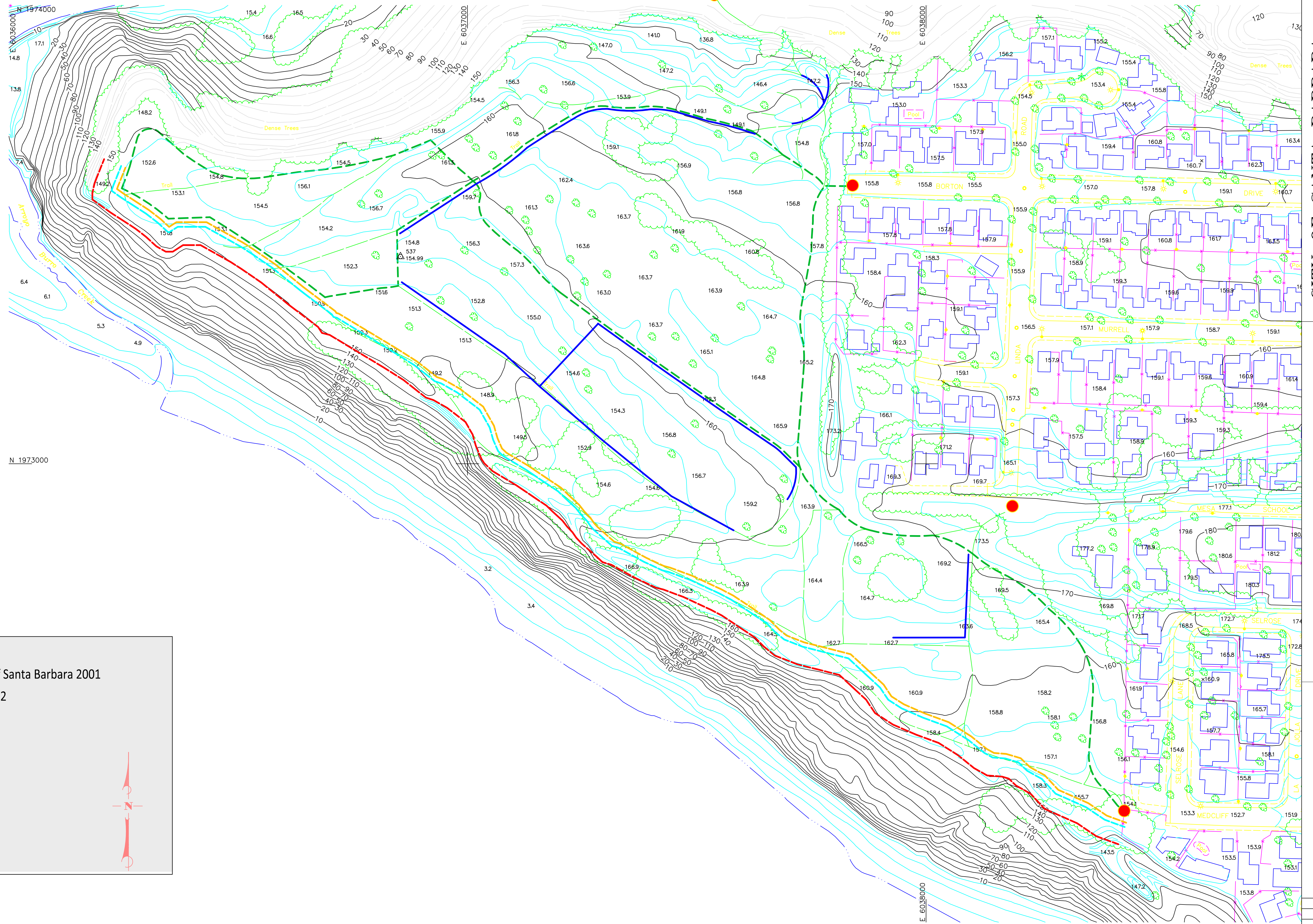




| | |
|-------------|---------|
| REVISIONS | DATE |
| SCALE: NONE | |
| DRAWN | 8/14/15 |



LEGEND

Overlaid Map- Topographic Map of the City of Santa Barbara 2001
Underlaid Map- Geological Map by, Fugro 2002

- Park Entrances
- - - Top of Bluff
- - - 40 foot 75-year Sea Cliff Retreat
- - - 50 foot Setback from Top of Bluff
- - - Universal Access Route
- - - Trails
- - - Asphalt Removal

