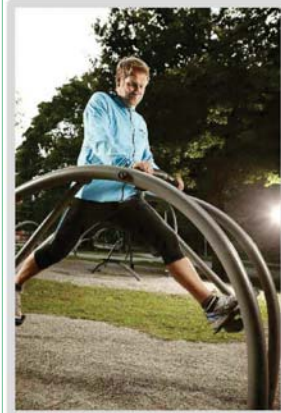




1. NW401 Stretch

2. NW501 Bench

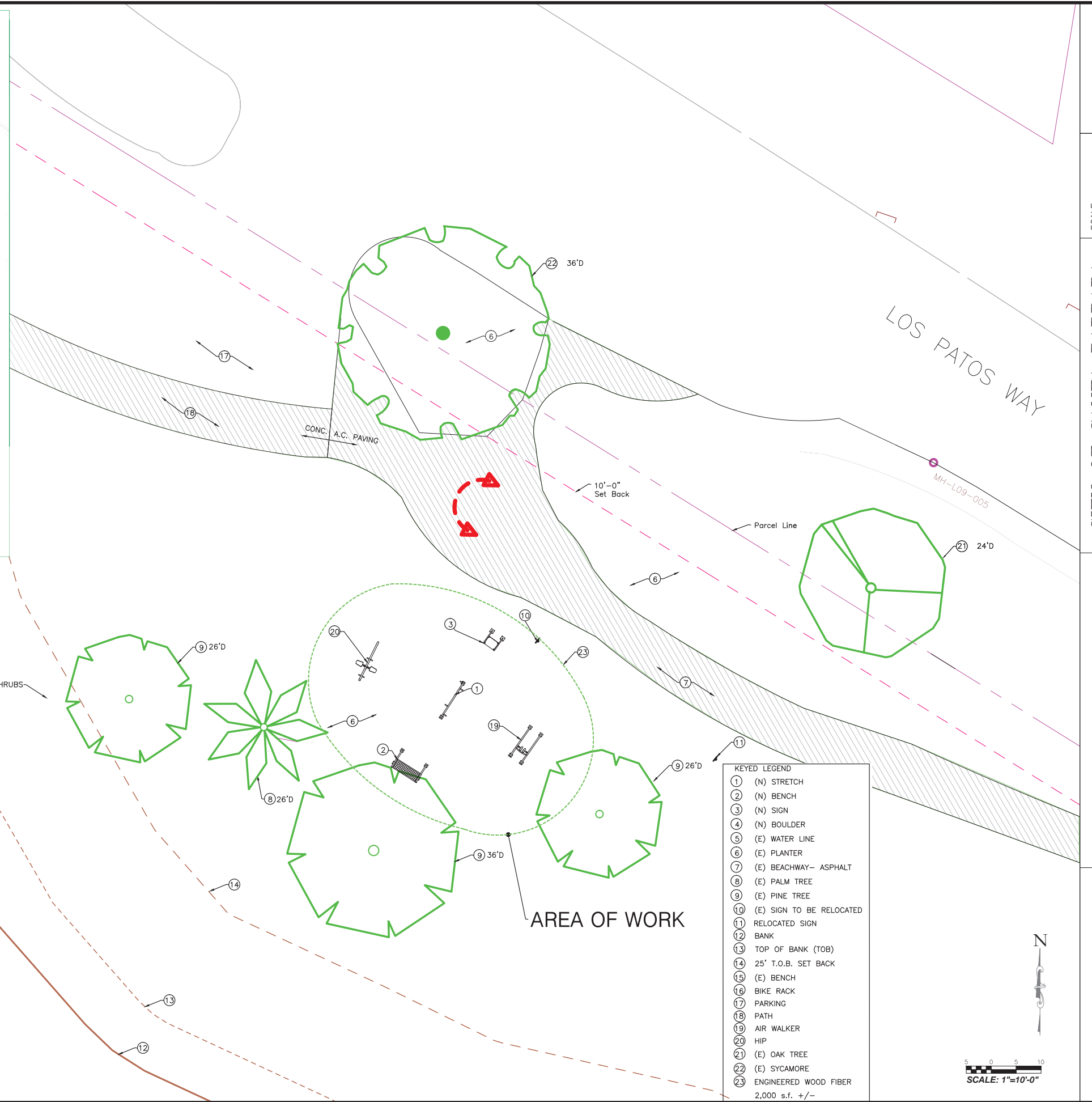
3. NW503 Sign



19. NW201 Air Walker

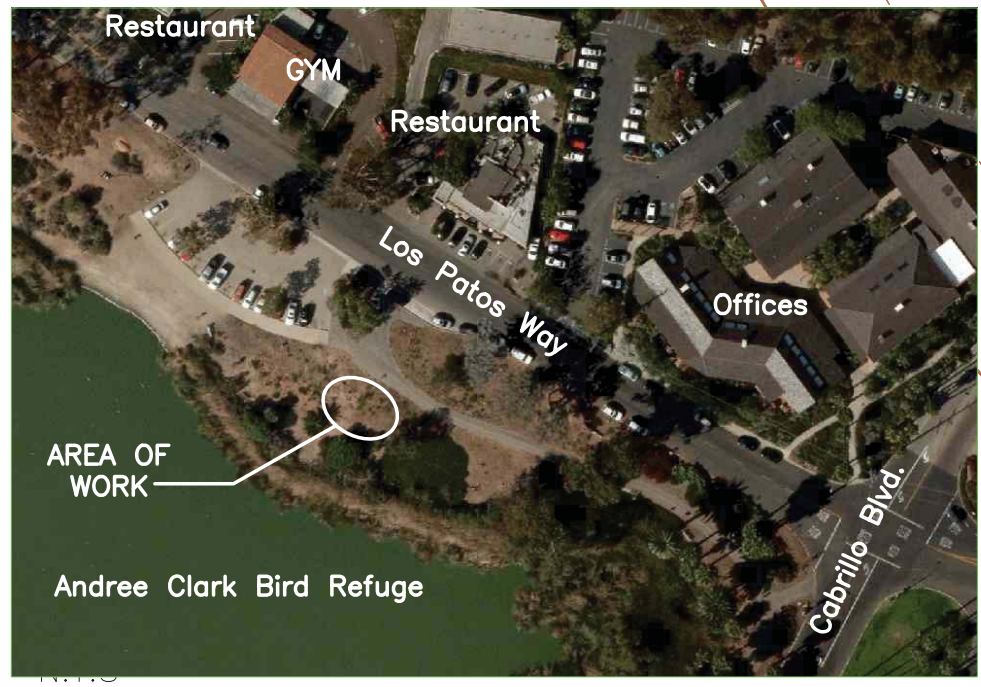


20. NW204 Hip



KEYED LEGEND

- ① (N) STRETCH
- ② (N) BENCH
- ③ (N) SIGN
- ④ (N) BOULDER
- ⑤ (E) WATER LINE
- ⑥ (E) PLANTER
- ⑦ (E) BEACHWAY- ASPHALT
- ⑧ (E) PALM TREE
- ⑨ (E) PINE TREE
- ⑩ (E) SIGN TO BE RELOCATED
- ⑪ RELOCATED SIGN
- ⑫ BANK
- ⑬ TOP OF BANK (TOB)
- ⑭ 25' T.O.B. SET BACK
- ⑮ (E) BENCH
- ⑯ BIKE RACK
- ⑰ PARKING
- ⑱ PATH
- ⑲ AIR WALKER
- ⑳ HIP
- ㉑ (E) OAK TREE
- ㉒ (E) SYCAMORE
- ㉓ ENGINEERED WOOD FIBER
2,000 s.f. +/-



PROJ. NO. _____
 SHT. _____ OF _____ SHTS.
 DWG. NO. _____

SCALE: 1"=10'-0"
 VERT. 1"=10'-0"
 HOR. 1"=10'-0"

CITY OF SANTA BARBARA
 PARKS AND RECREATION DEPARTMENT

APPROVED: _____ DATE _____
 PARK PROJECT TECHNICIAN

NEW STRETCH EQUIPMENT
 1700 Block E. CABRILLO BLVD., SB, CA
 APN: 017-382-001

Partial Site Plan
 Proposed