

BROPHY BROS. BUILDING
119-B HARBOR WAY

SUSHI GO GO - LESSEE
 FIRST FLOOR PLAN
 198 SF

N 1973691.6513
 E 6050954.2891

N 1973692.3264
 E 6050952.5262

N 1973683.3325
 E 6050944.2709

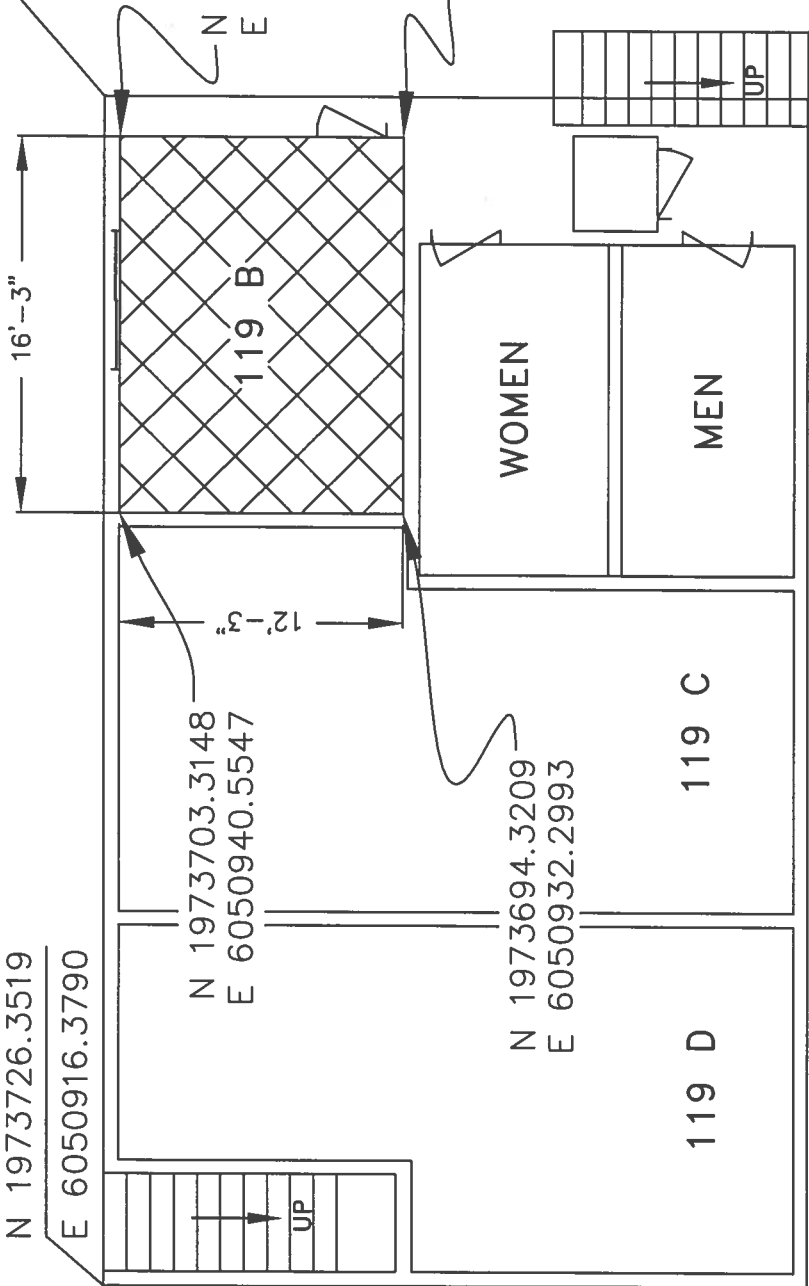
N 1973669.2535
 E 6050933.7186

N 1973726.3519
 E 6050916.3790

N 1973703.3148
 E 6050940.5547

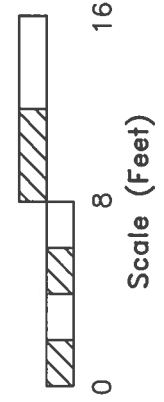
N 1973694.3209
 E 6050932.2993

N 1973703.9383
 E 6050895.8802



JUL 19 2012
 #7

REVISIONS		Sushi Go-Go	
T. Reznick 1/28/01		Exhibit "A"	
DATE	BY	DATE	BY
5/13/06	1-1	1190-080	T. Gauch
119-B HARBOR WAY		1190-080	
City of Santa Barbara		2 of 2	
Waterfront Department			



ATTACHMENT