



# **Downtown Parking Thanksgiving Occupancy Survey**



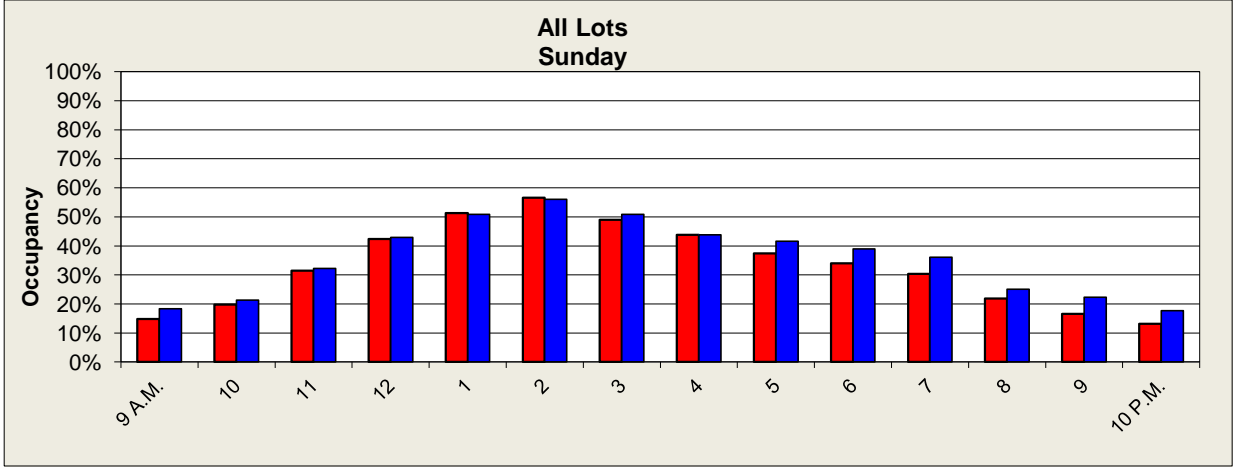
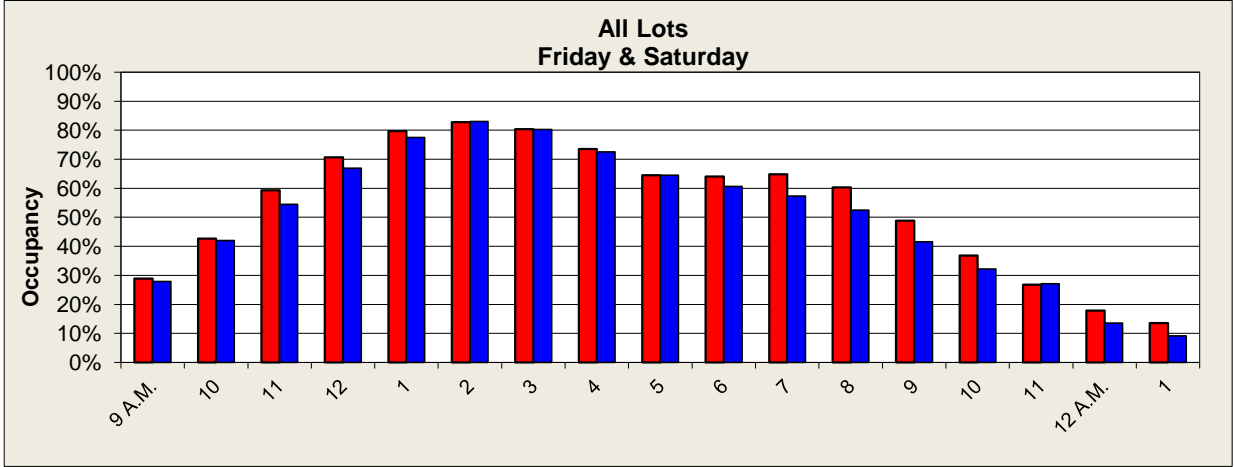
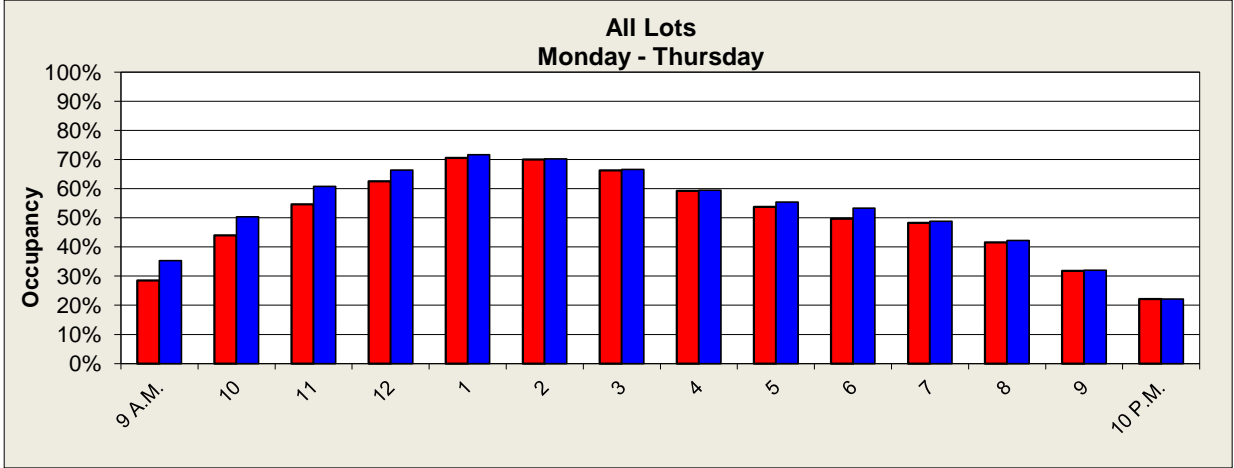
**11/24/2014 thru 11/30/2014**

**vs.**

**11/25/2013 thru 12/01/2013**

## Parking System Occupancy Graphs Based on 3200 Total Spaces Thanksgiving Week, 2014 vs. 2013

**2014**                      **2013**

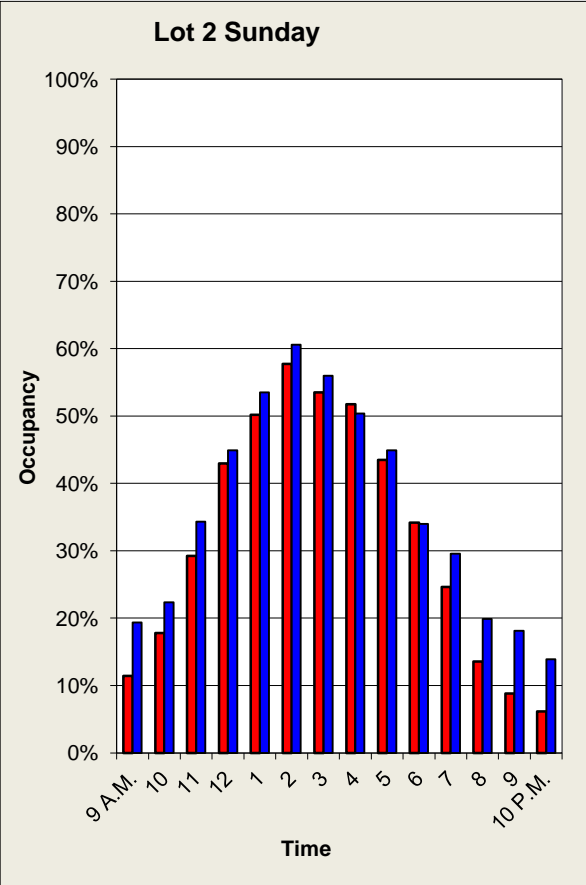
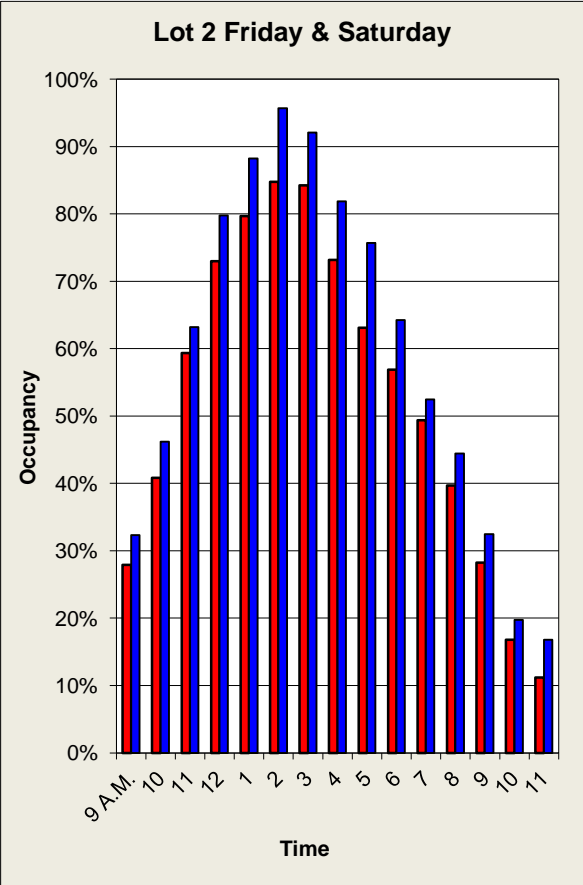
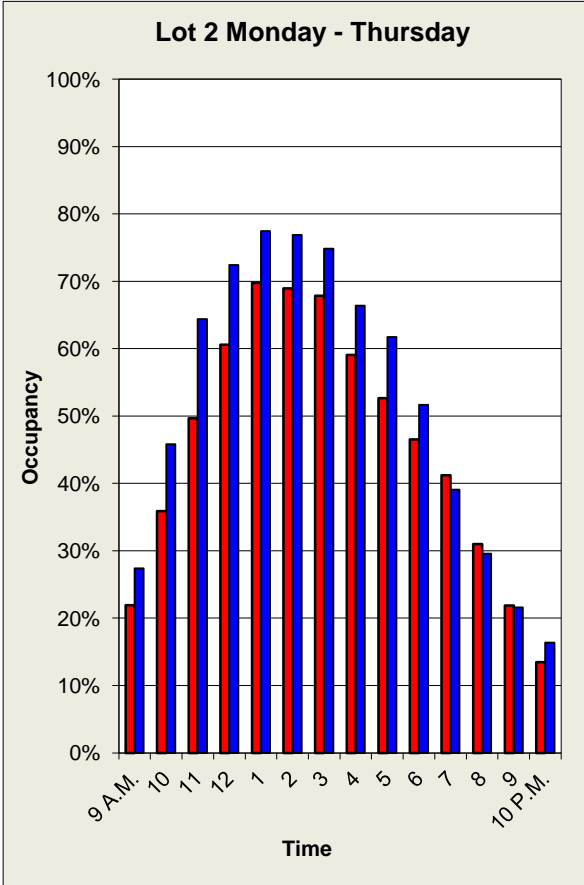


**Thanksgiving Week  
2014 vs. 2013**

**Lot 2**

Spaces: 568, parking structure.  
(Nordstrom, Canary Hotel, Powell Peralta)

**2014** **2013**



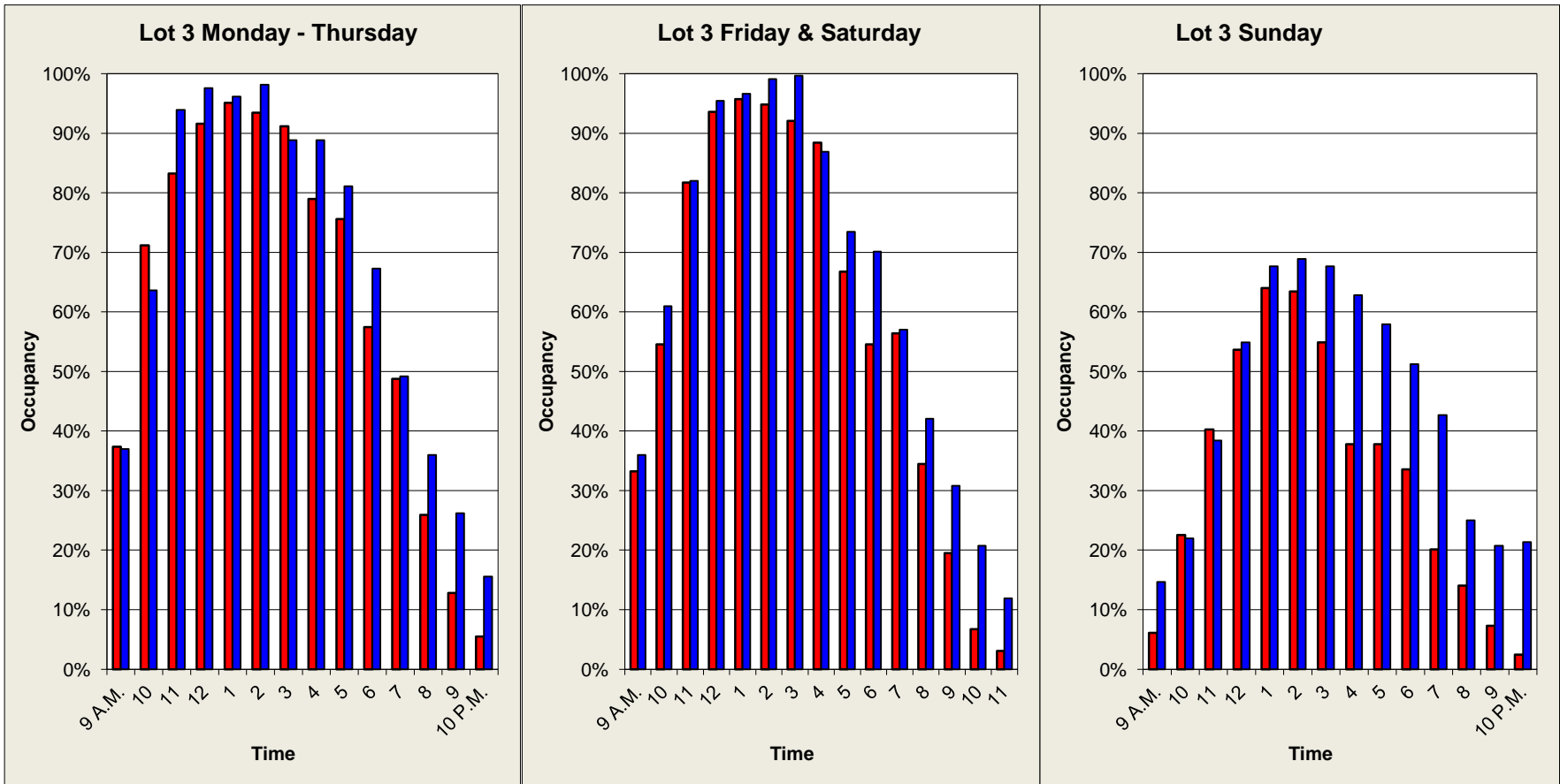
Thanksgiving Week  
2014 vs. 2013

**Lot 3**

Spaces: 164, surface lot.  
(MTD Bus Station, Saks, Walter Claudio, Old Greyhound)

2014

2013



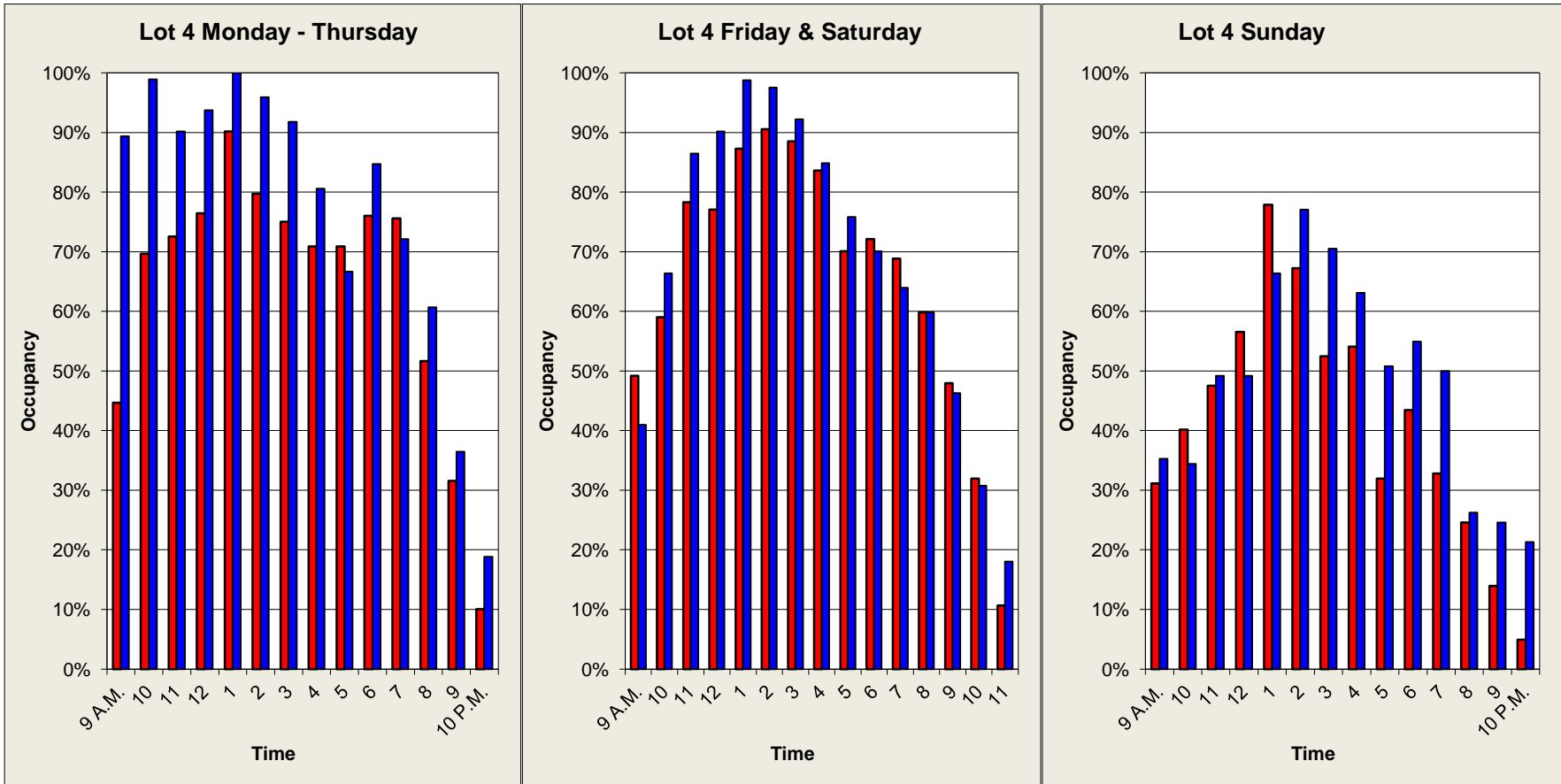
Thanksgiving Week  
2014 vs. 2013

**Lot 4**

Spaces: 122, surface lot.  
(CVS, Hennings, Sansum Clinic, Don Q's, Core Yoga)

2014

2013

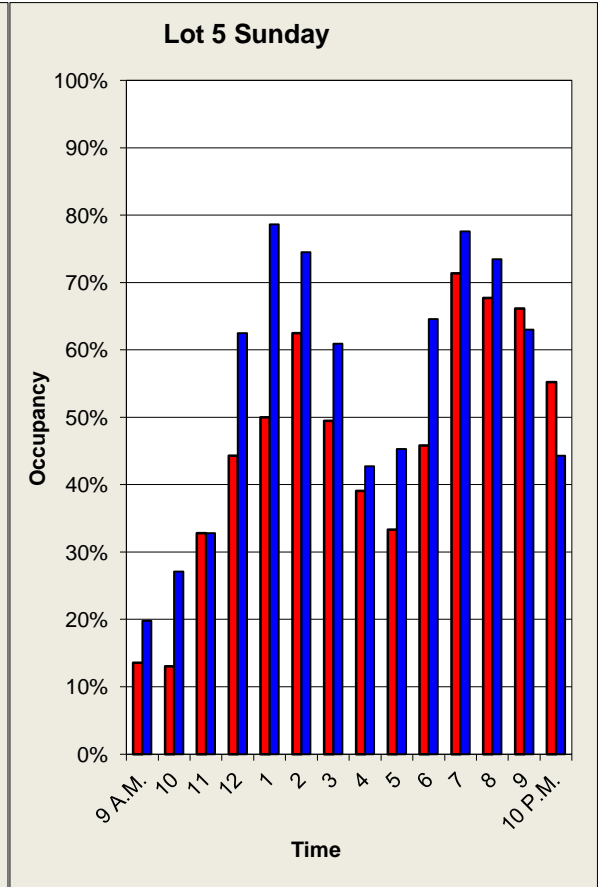
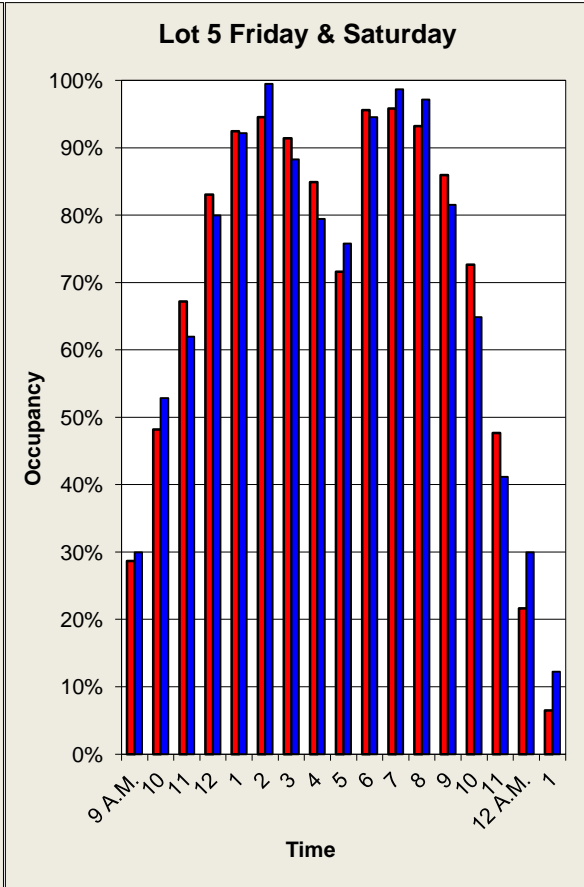
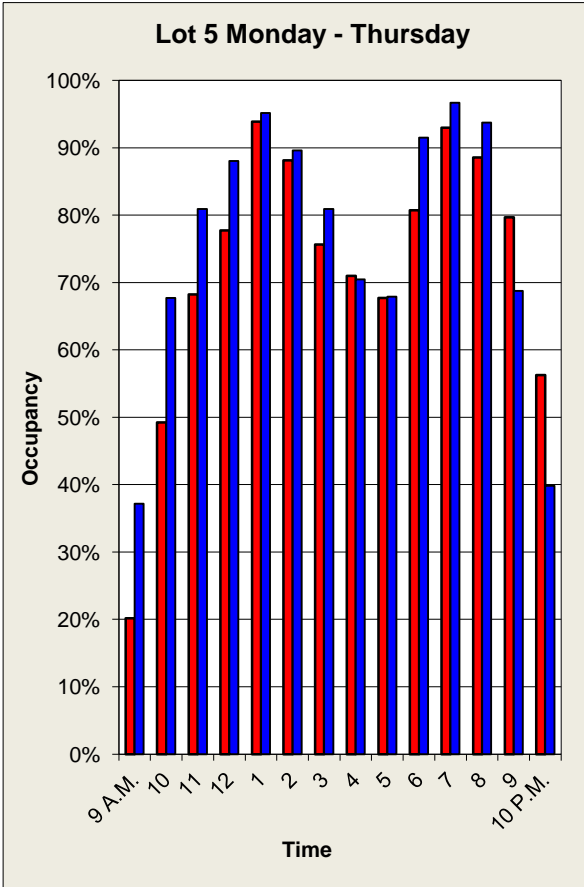


**Thanksgiving Week  
2014 vs. 2013**

**Lot 5**

Spaces: 192, surface lot.  
(SOHO Club, Unity Shoppe, New Vic Theatre)

**2014** **2013**

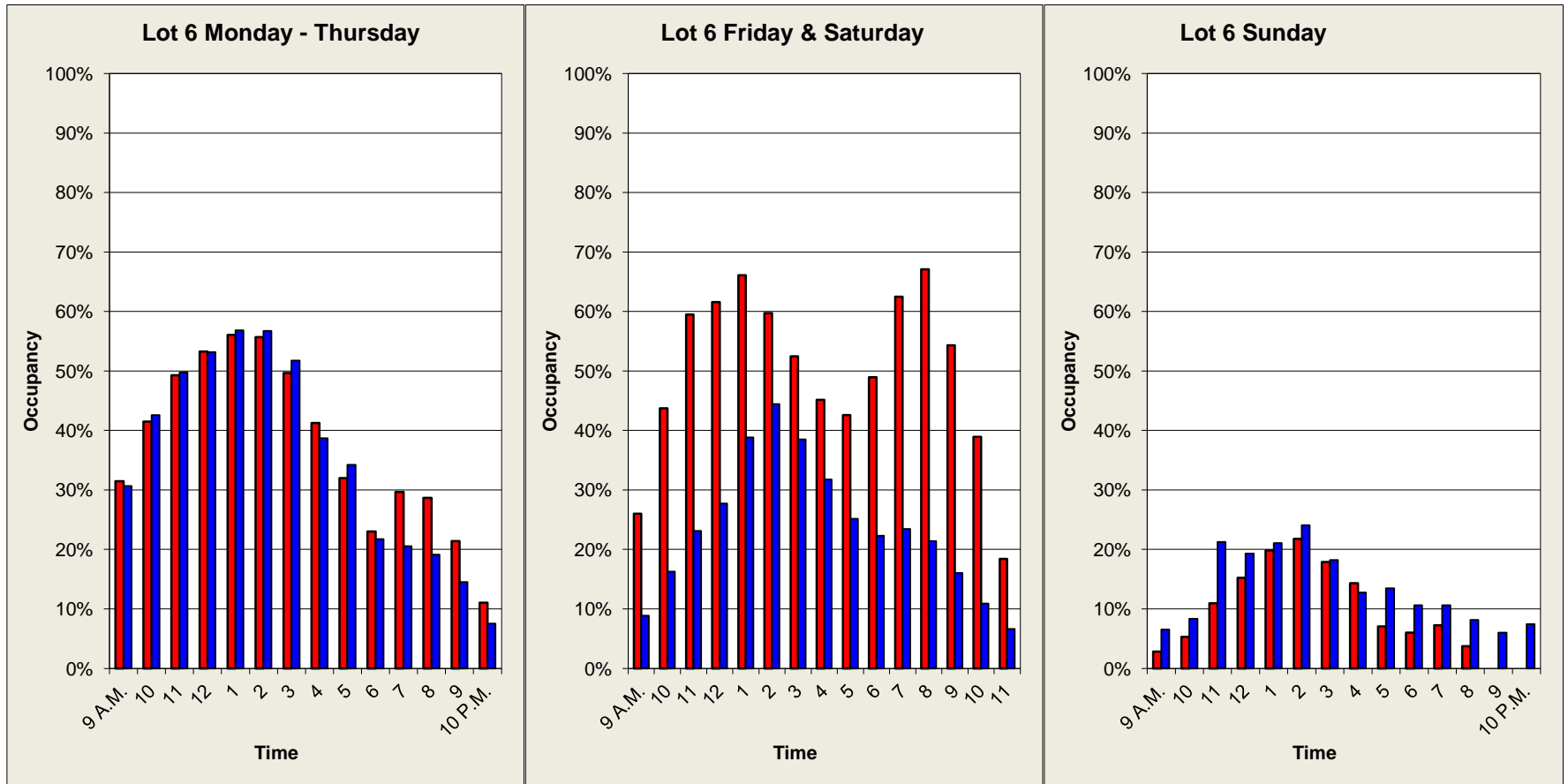


Thanksgiving Week  
2014 vs. 2013

**Lot 6**

Spaces: 565, parking structure.  
(Granada Garage, Coffee Cat, Tupelo Cafe, Book Den)

**2014** **2013**



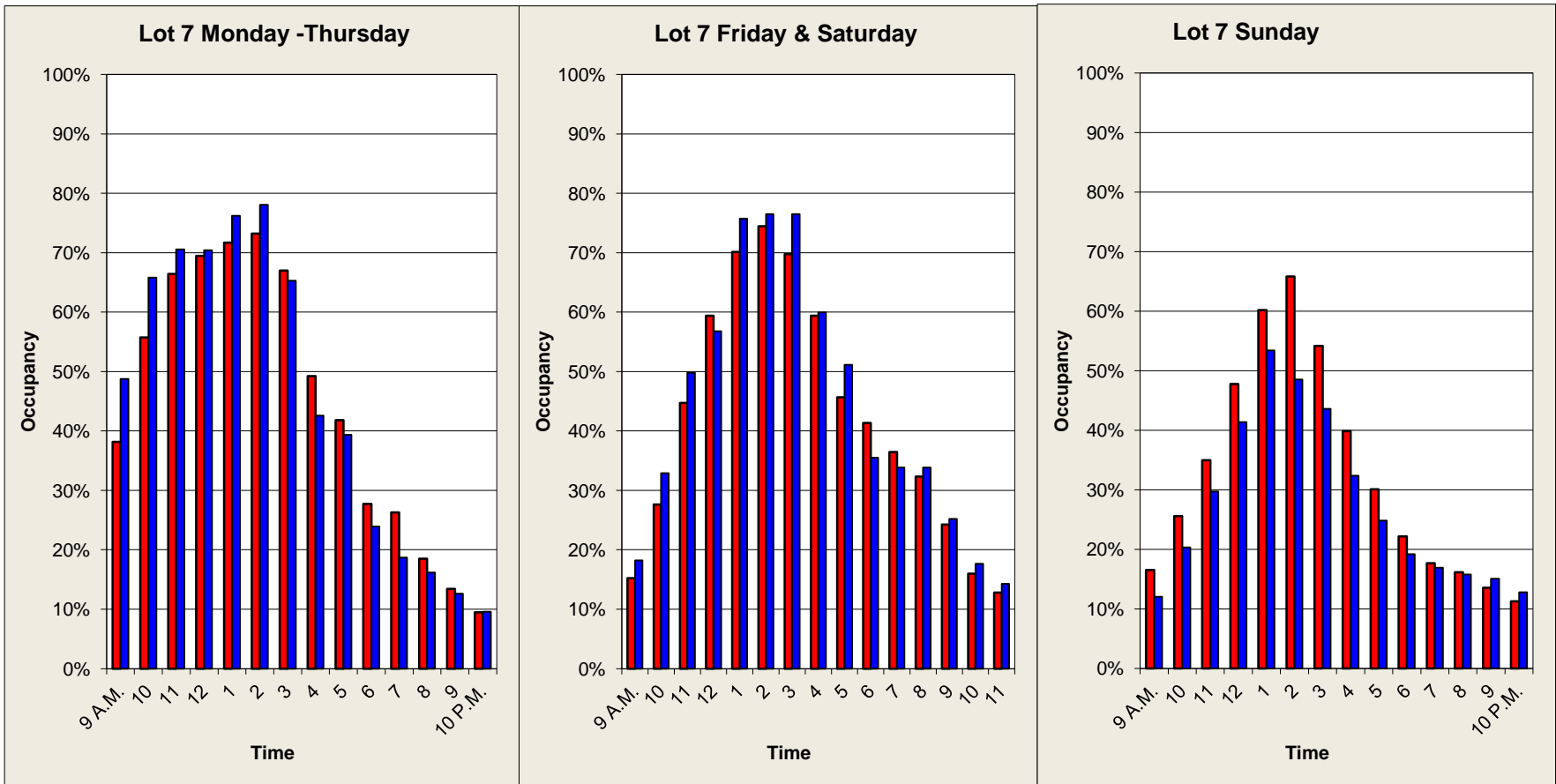
Thanksgiving Week  
2014 vs. 2013

**Lot 7**

Spaces: 266, parking structure.  
(Library Garage, La Arcada, SBMA)

2014

2013



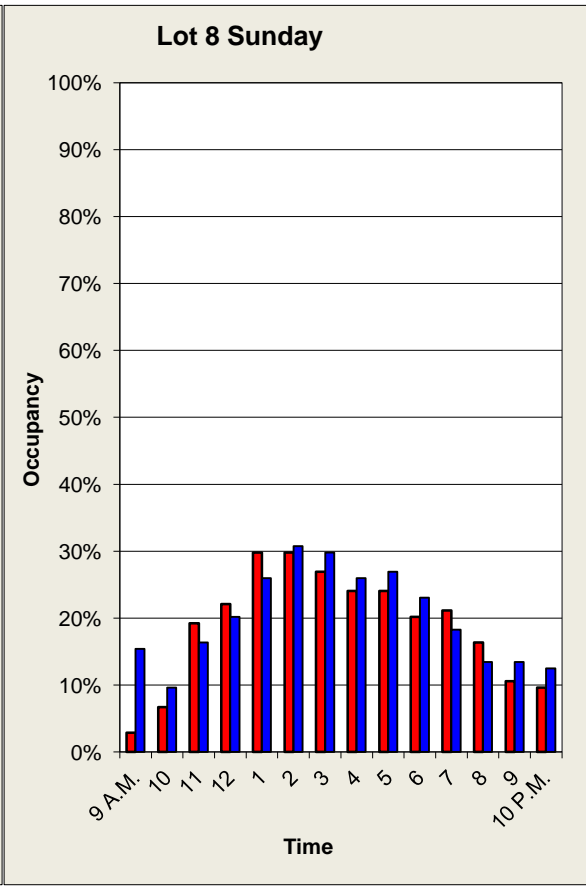
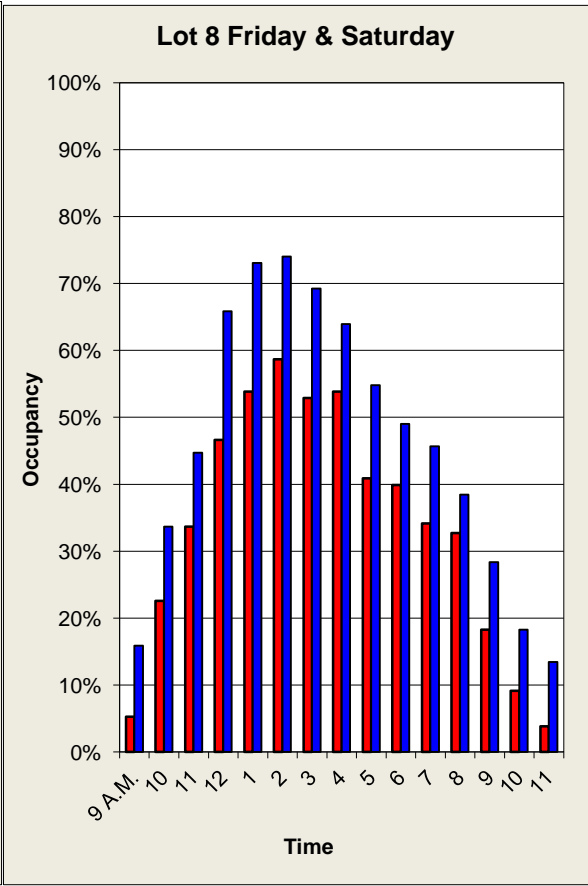
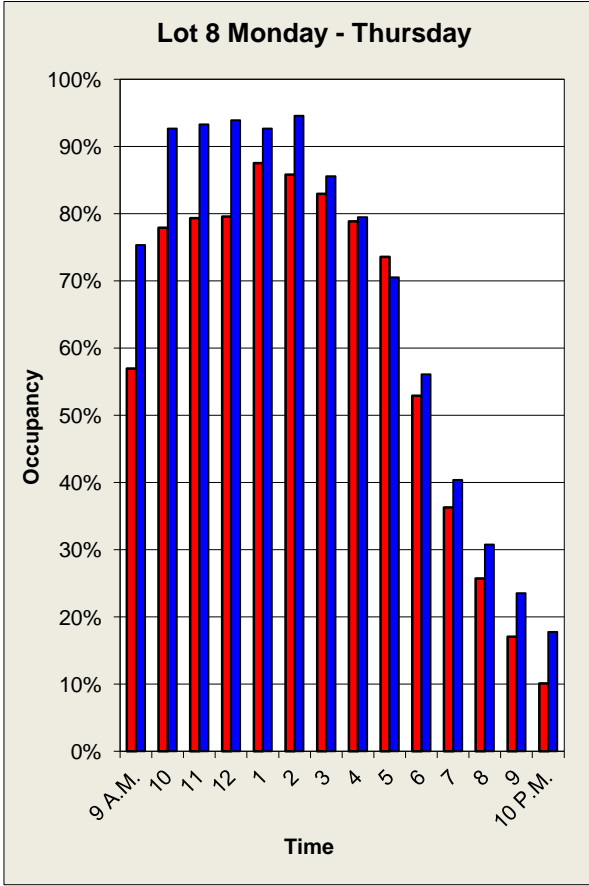


**Thanksgiving Week  
2014 vs. 2013**

**Lot 8**

Spaces: 104, surface lot.  
(Kinkos, Chase Grill, Rabobank, Bank of Santa Barbara)

**2014** **2013**

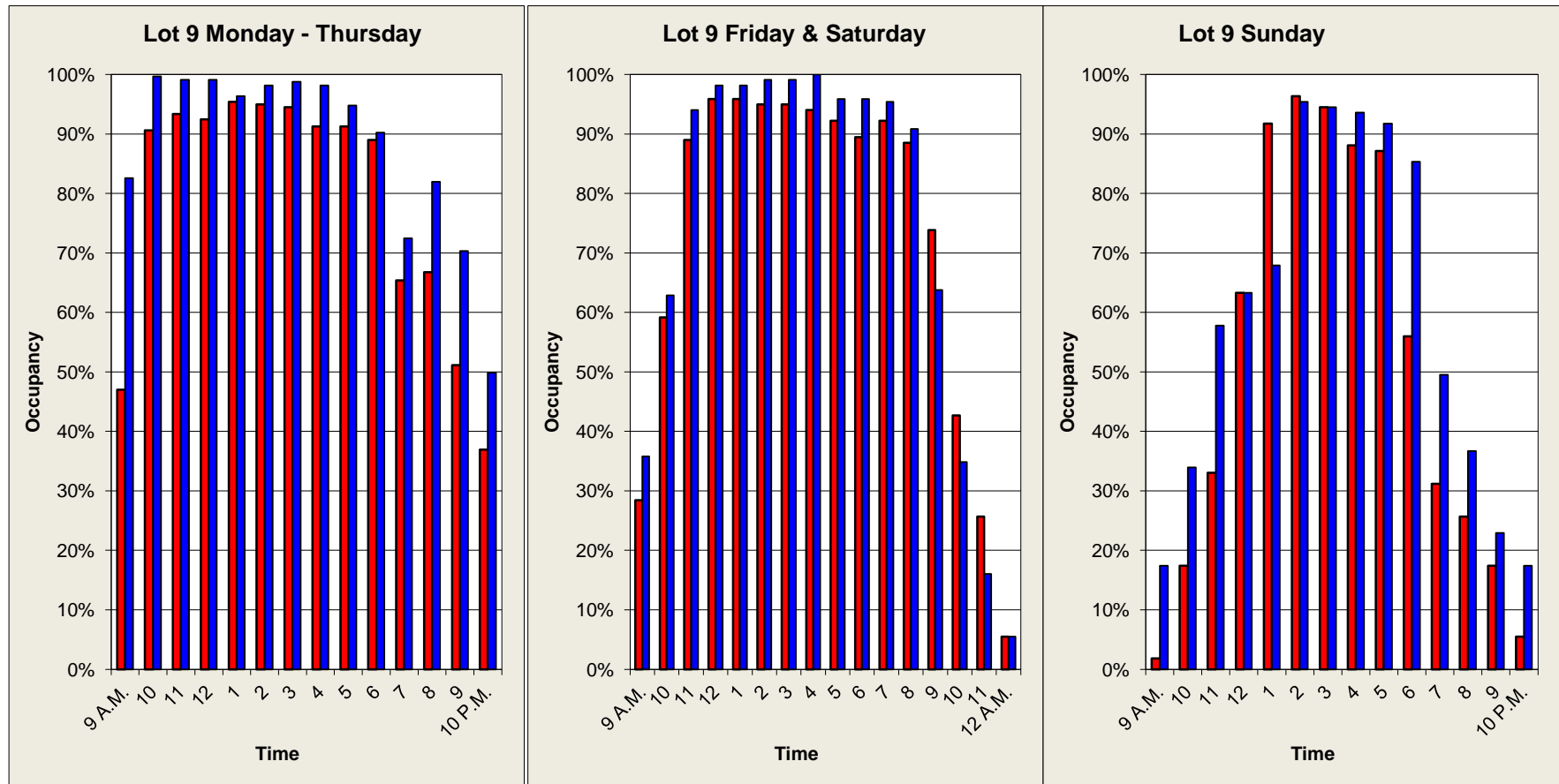


Thanksgiving Week  
2014 vs. 2013

**Lot 9 (Mid Level)**

Spaces: 109 (Excluding 26 Basement Spaces)  
(Lobero Garage, Fiesta 5, Marshalls, Union Bank, Apple Store)

**2014** **2013**



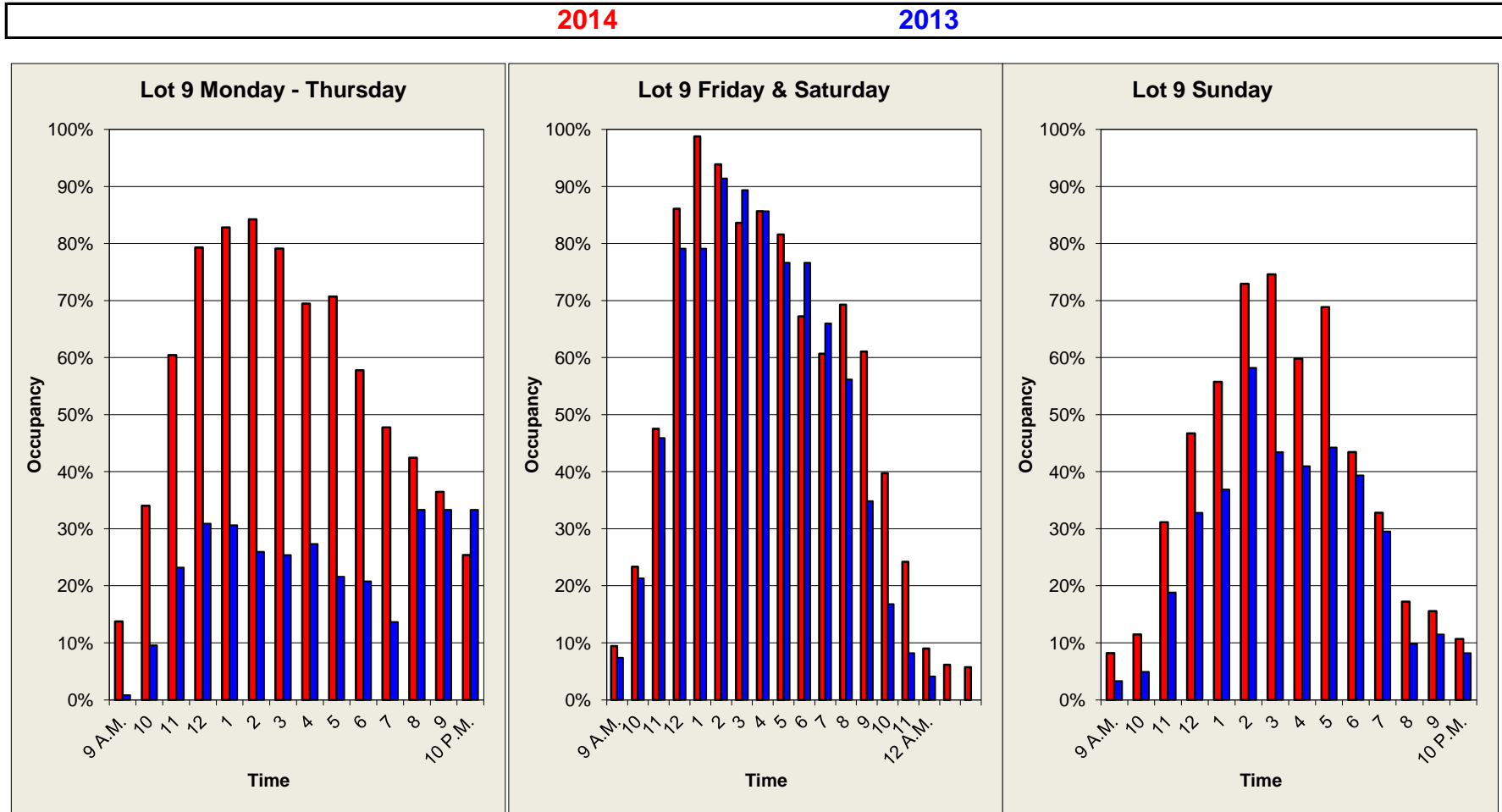
\*During November and early December of 2013, Lot 9 underwent deck refurbishing and crack sealing.

Thanksgiving Week  
2014 vs. 2013

**Lot 9-2 (Top Level)**

Spaces: 122

(Lobero Garage, Fiesta 5, Marshalls, Union Bank, Apple Store)



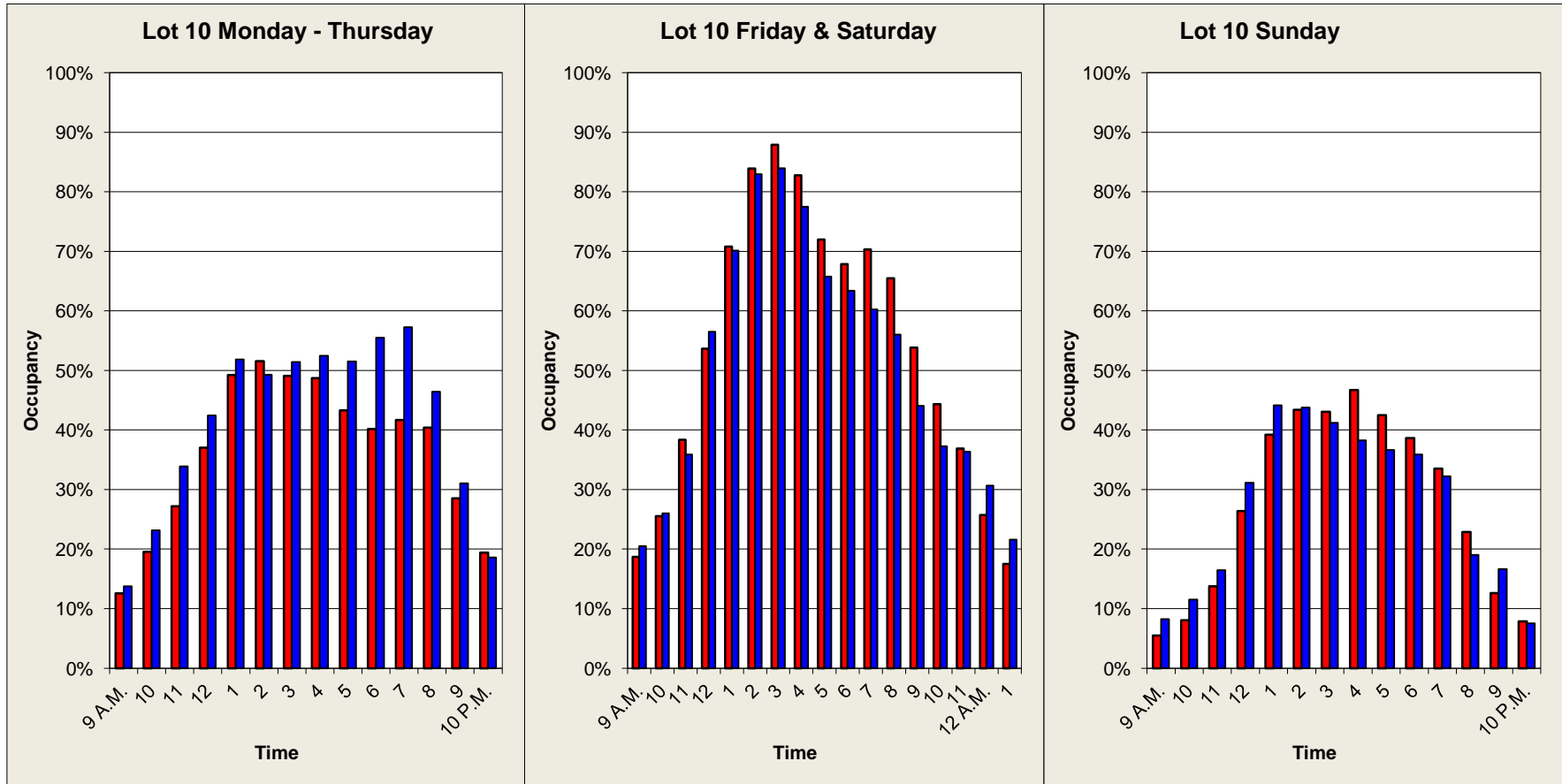
\*During November and early December of 2013, Lot 9 underwent deck refurbishing and crack sealing.

Thanksgiving Week  
2014 vs. 2013

**Lot 10**

Spaces: 546, parking structure.  
(Ortega Garage, Dargan's, Habit, Seagrass, World Market)

**2014** **2013**



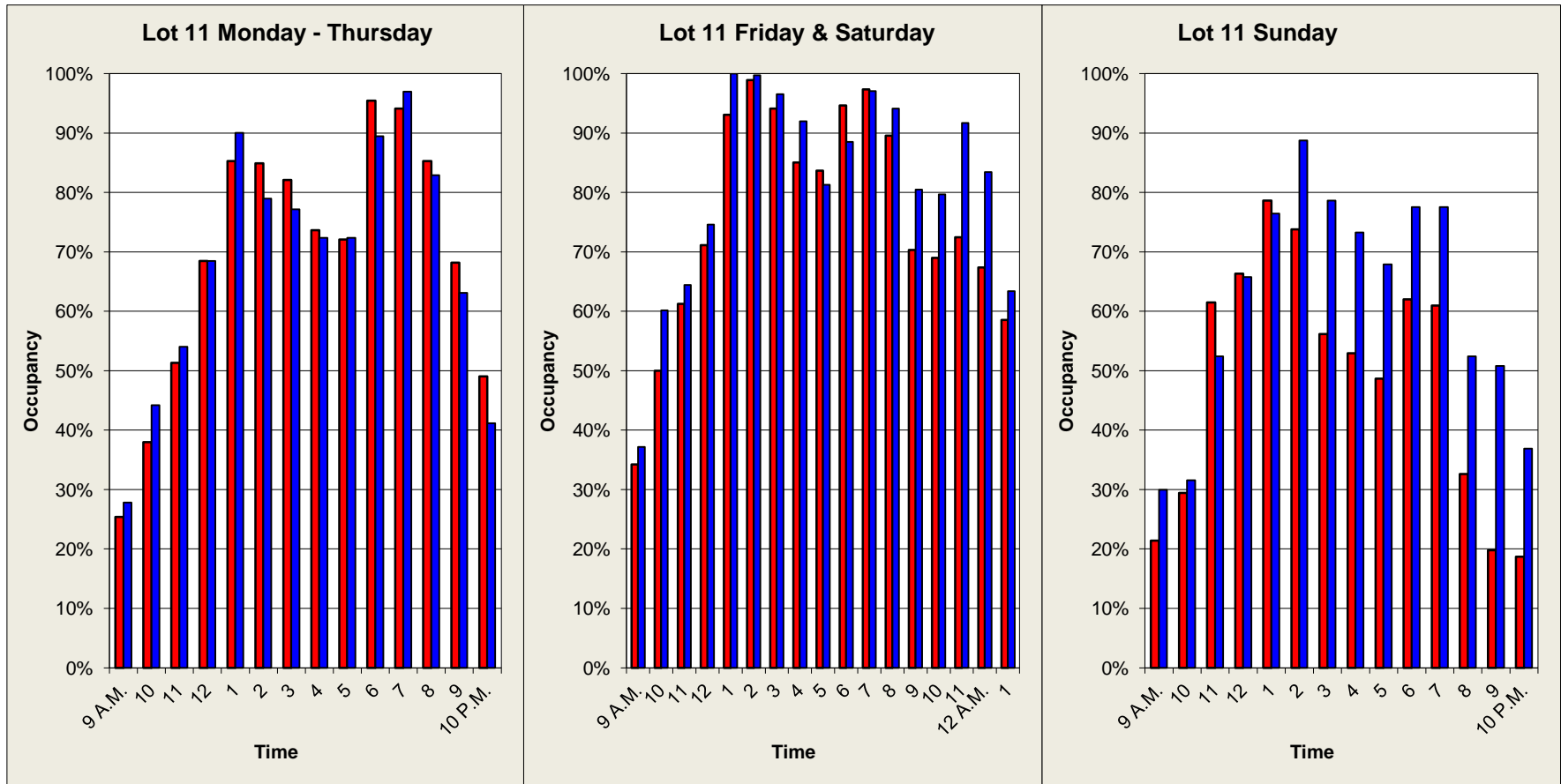
Thanksgiving Week  
2014 vs. 2013

**Lot 11**

Spaces: 187, surface lot.  
(Paul Mitchell, Pierre La Fond, Holdren's)

2014

2013



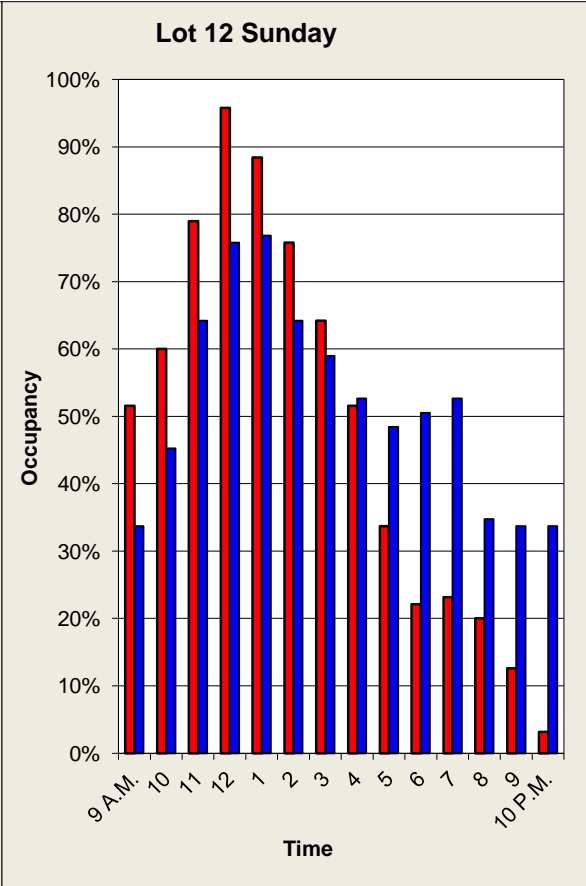
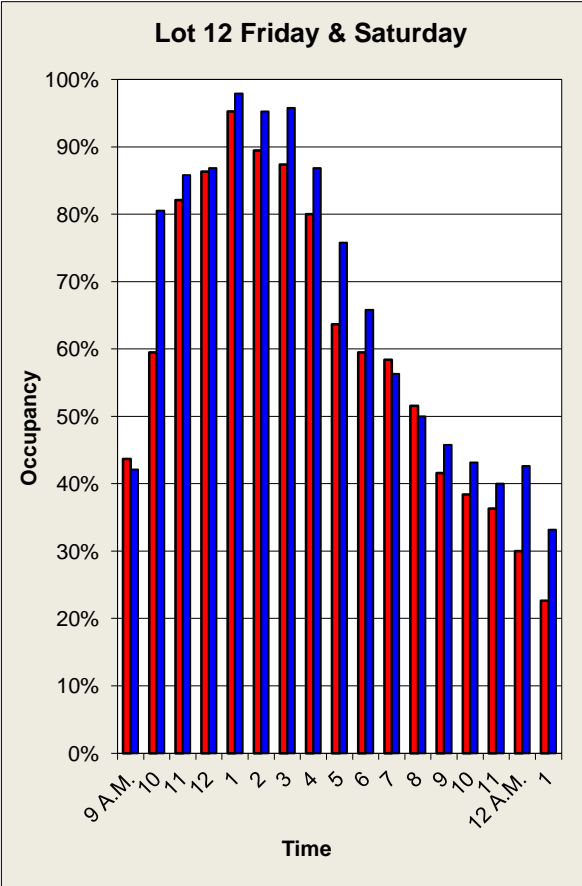
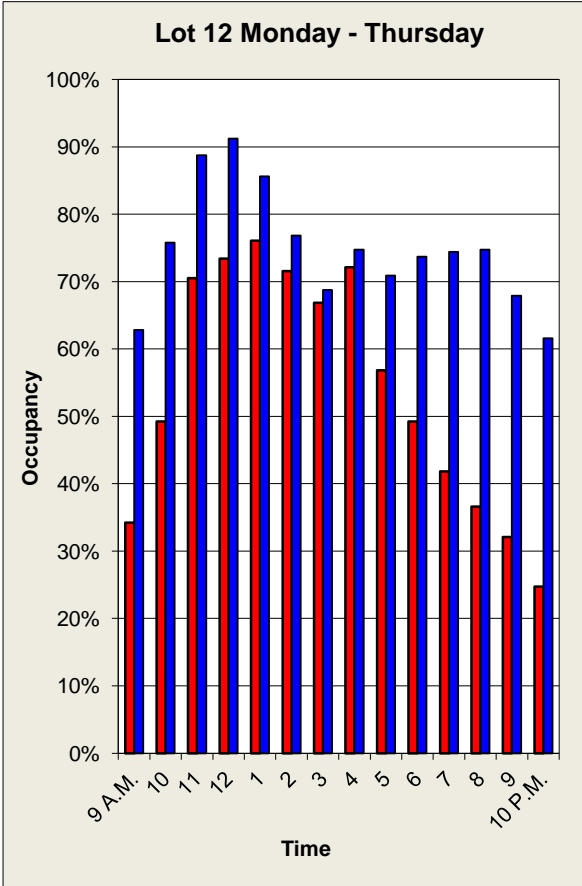
**Thanksgiving Week  
2014 vs. 2013**

**Lot 12**

Spaces: 95, surface lot.

(Roasting Company Coffee, Backyard Bowls, D'angelo's)

**2014** **2013**



Thanksgiving Week  
2014 vs. 2013

**Lot 13**

Spaces: 160, surface lot.

(Amtrak/Greyhound Stations, Enterprise Fish Company, Ducati Store, Reagan Center)

**2014** **2013**

