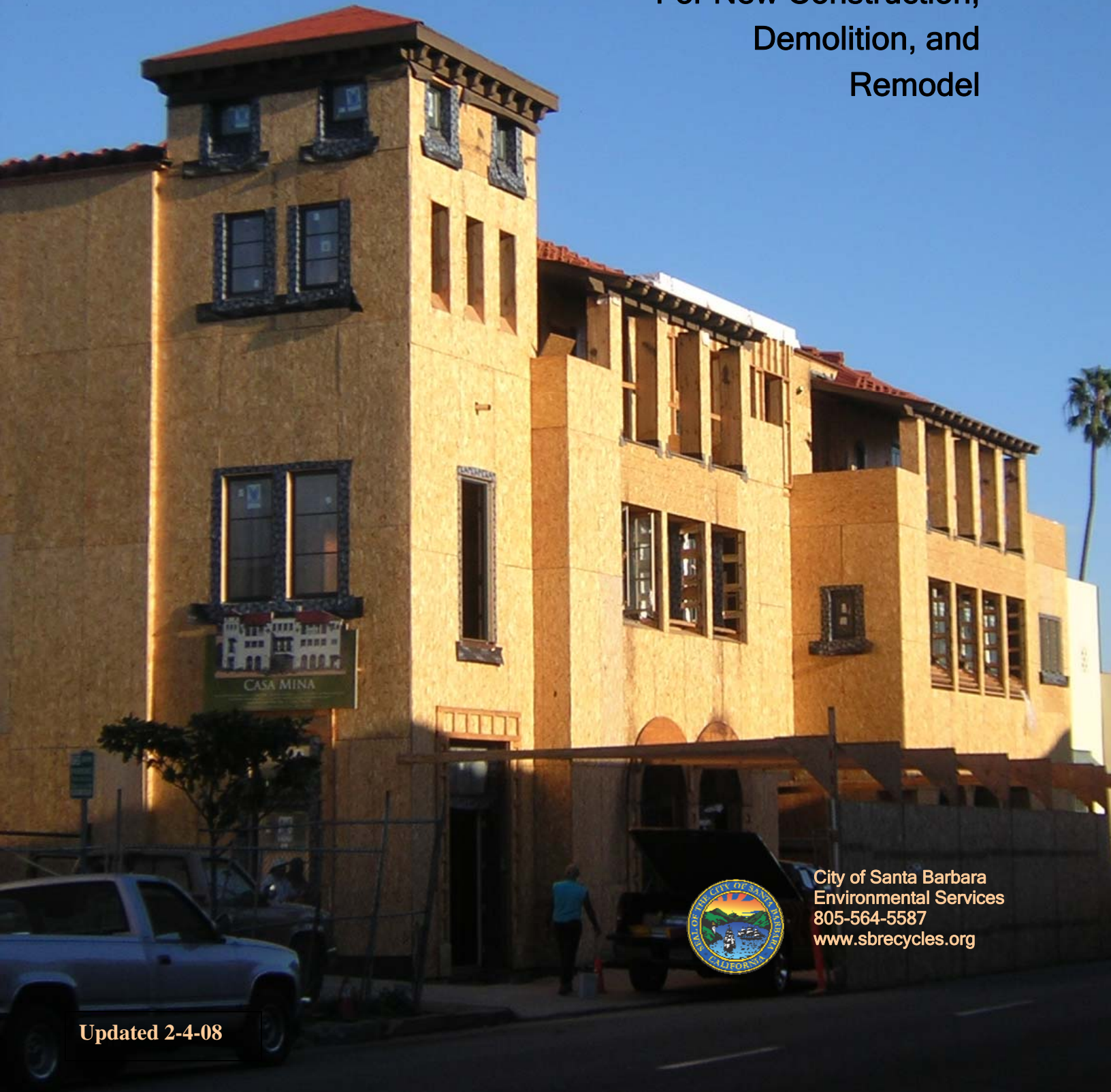


# CONSTRUCTION & DEMOLITION RECYCLING GUIDE

For New Construction,  
Demolition, and  
Remodel



City of Santa Barbara  
Environmental Services  
805-564-5587  
[www.sbrecycles.org](http://www.sbrecycles.org)

Updated 2-4-08

## Introduction

This guide provides information about recycling wastes generated during large construction and demolition (C&D) projects. For do-it-yourself or small scale remodeling, see the *Construction & Demolition Waste Recycling Guide for Small Projects and Remodeling* available at [sbrecycles.org](http://sbrecycles.org) or from Environmental Services. In this document, the term *waste* refers to discarded materials that may be either recyclable, trash, or a mix of both. Unlike many small communities, Santa Barbara County has many facilities that accept C&D waste for recycling.

City of Santa Barbara Environmental Services staff will be happy to provide information or resources for C&D recycling, or help you become a permitted hauler or certified recycling facility. Please call Karen Gumtow, 564-5677, or email [kgumtow@santabarbaraca.gov](mailto:kgumtow@santabarbaraca.gov) for information.

## CONTENTS

**Section 1:** Recycling Requirements: Unscheduled Collection Ordinance

**Section 2:** Overview of Recycling Methods and Costs

**Section 3:** Selecting a Hauler or Self Hauling

**Section 4:** Certified Recycling Facilities

**Appendix A:** Local Resources for Salvage

**Appendix B:** Rate Sheets for Certified C&D Recycling Facilities

**Appendix C:** List of Permitted Haulers

## Section 1: Recycling Requirements: Unscheduled Collection Ordinance

The City of Santa Barbara has passed an **Unscheduled Collection Ordinance** that requires all haulers with a gross vehicle weight of 7 tons or more to be permitted in order to haul loads of solid waste that originate within the City of Santa Barbara. This includes construction, demolition, cleanup, and all other loads. It also includes companies that haul their own waste from job sites. The ordinance is not limited to rolloff trucks. The ordinance also requires the haulers to bring all loads to a Certified Recycling Facility except the following materials:

- Grit from wastewater treatment facilities
- Asbestos
- Residual from diversion facilities
- Building materials (including treated wood) that exceed maximum standards for lead and other regulated substances
- Solid waste from special events, including but not limited to, weddings, festivals, parades and other single or intermittent events
- Composition shingles
- Loads consisting primarily of yucca, palm, and agave

Haulers that transport the exempted materials must still be permitted, but can bring them to a landfill rather than a Certified Recycling Facility. A list of permitted haulers is available in Appendix C. See the City website for ordinance summary and full text at [http://www.santabarbaraca.gov/Business/Utilities and Recycling/Waste/Unscheduled+Collection+Ordinance.htm](http://www.santabarbaraca.gov/Business/Utilities_and_Recycling/Waste/Unscheduled+Collection+Ordinance.htm) . See the Introduction section for information about obtaining a permit.

## Section 2: Overview of Recycling Methods and Costs

There are three basic methods for C&D waste recycling: salvage, source separated recycling, and mixed waste recycling. One method is not always superior to the other since there are tradeoffs between convenience and cost.

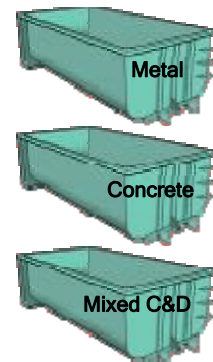
### SALVAGE

Usable materials are removed and given or sold to someone who will incorporate them into new construction. Vintage or high-end doors, windows, plumbing fixtures, porcelain, lighting fixtures, or other unique elements can be sold to businesses that specialize in used building materials. Any item can be sold or given away, including usable construction scraps. If they can be used to build a doghouse, then they may have value to someone. There are several free local material exchanges that connect sellers/donators with buyers/receivers. The internet based services are very fast, and it may be possible to find a buyers/receivers the same day the ad is posted. See Appendix A for *Local Resources for Salvage*.



### SOURCE SEPARATED RECYCLING

Project waste is sorted by the construction crew as it is generated and is placed into different containers, piles, or trucks depending on material type. For example, there might be a rolloff onsite for concrete and asphalt only, one for metal only, and one for everything else. The concrete and metal rolloffs are brought to facilities that accept pure materials. The “everything else” container is brought to a mixed waste recycling facility. The construction crew will have to put materials into the correct pile or container instead of one container. This may or may not entail additional labor, but the entire crew must participate. The tipping fee for the sorted materials is very low compared to that for mixed wastes. Payment is possible for the sorted metals. See Table 1 for a relative cost comparison of tipping fees at local recycling facilities. See Appendix B for actual rates for local facilities. Rates are subject to change without notice and calling is recommended.



**Table 1: Cost Comparison of Recycling vs. Disposal at Local Large Scale Certified Recycling Facilities**

	Progressive <sup>1</sup> Waste 965-6177	MarBorg <sup>1</sup> 963-1852	Granite <sup>2</sup> Construction 964-9951	Lash <sup>2</sup> Construction 963-3553	Standard Industries 643-6669	SC Recycling <sup>4</sup> & Transfer 681-4345	SB Sand <sup>3</sup> & Topsoil 966-3909	Tajiguas <sup>3,4</sup> Landfill 696-1170
<b>Mixed Wastes</b>								
C & D Waste		\$\$\$\$\$				\$\$\$\$		\$\$\$\$
Rubble		\$		\$		\$\$\$\$	\$	\$\$\$\$
Asphalt/Conc. w/Metal			\$			\$\$\$\$	\$	\$\$\$\$
Asphalt/Conc. w/o Metal		\$	\$	\$		\$\$\$\$	\$	\$\$\$\$
<b>Pure Materials</b>								
Dirt Only		\$				\$	\$	\$\$\$\$
Wood Only	Call for rate	\$\$\$				\$		\$\$\$\$
Green Waste Only	Call for rate	\$\$\$				\$		\$\$\$\$
Cardboard Only		Free				Free		\$\$\$\$
Metal Only		Free			Payment	\$		\$\$\$\$
Appliances w/o Freon		Free			Payment	Free		\$\$\$\$
Appliances w/Freon (ea )		\$				\$		\$\$\$\$
Carpet		\$\$\$\$\$				\$\$\$\$		\$\$\$\$
Sinks, Tubs, Toilets		Free				\$\$\$\$		\$\$\$\$

<sup>1</sup>Processors also offer hauling services. Will haul to their own or to other facilities.

<sup>2</sup>Large customers must make pre-arrangements

<sup>3</sup>Not open to general public. Large customers only.

<sup>4</sup>Items in red are not recycled

**Definitions**

C & D Waste: Mix of recyclable and non-recyclable items including drywall, stucco, concrete, masonry, cardboard, asphalt, green waste, wood, carpet, and trash. No household trash.

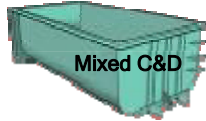
Rubble: Concrete, plaster, stucco, bricks, asphalt, rock, masonry, and ceramics only. No organics.

Asphalt/Conc. w/Metal: Asphalt and/or concrete with rebar

Asphalt/Conc. w/o Metal: Asphalt and/or concrete without rebar

## MIXED WASTE RECYCLING

All waste from the project site is placed in one container or truck. Rather than going to a disposal facility (landfill or transfer station), the waste is brought to a mixed waste processing facility. The waste is sorted by the facility into categories such as wood, concrete, dirt, metal, and non-recyclable trash. At the facility, the sorted materials are diverted back into productive economic use, and the trash is brought to a landfill.



Mixed waste recycling does not entail any extra labor at the construction site and the crew will not notice a difference from disposal. Tipping fees for mixed C&D waste are comparable with those for disposal on the South Coast. For waste bound for the Transfer Station (former dump), mixed waste recycling has been, and continues to be less expensive than disposal. For waste bound for Tajiguas Landfill, the disposal fee structure has changed as of July 1, 2004 so that disposal of C&D waste is more expensive than regular municipal solid waste. This ensures that recycling C&D is less expensive than disposal.

## WHICH METHOD IS BEST?

Both source separated and mixed waste facilities are located on the South Coast of Santa Barbara County. Table 1 provides a summary of the materials accepted by each. Whether source separation or mixed waste recycling is more cost effective may vary by project. The increased cost of onsite separation and waste management is balanced against the often much lower tipping fees. If space is a severe limitation, source separation may not be an option because a different container or pile is needed for each material type. Source separation succeeds when all the workers are committed to putting the material in the correct container. For large, diverse, high turnover crews, it may not work as well as mixed waste recycling.

## Section 3: Choosing a Hauler or Self Hauling

You can either manage and haul the C&D material yourself, or a hire hauler to do it for you. Some recycling facilities also offer hauling services, and they will haul material both to their own facilities and to other facilities.

## CONTRACTING WITH A HAULER

Permitted haulers must bring all loads of C&D waste to recycling facilities, so as long as the hauler you chose is legally permitted, the material will be recycled. Contractors or project owners can choose any permitted waste hauler to handle the project waste, and can choose where it goes for processing. Some haulers will plan the waste management up front and deliver separate rollofs to the site for a source-separated system. Others will simply bring the waste container to the correct



facility when they see the contents. Appendix C contains a list of permitted haulers. Some of the haulers also operate Certified Recycling Facilities, but the hauling and facility operations are separate.

## SELF HAUL

If the waste materials will be self hauled, plan for either a mixed or source separated recycling system and simply bring the waste to one or more of the Certified Recycling Facilities listed in Table 1 and Section 4. If your trucks have GVW of 7 tons or more, you must be permitted by the City, even if it is for a single project and you are hauling your own waste. See the Introduction section for information about obtaining a permit.

## Section 4: Certified Recycling Facilities

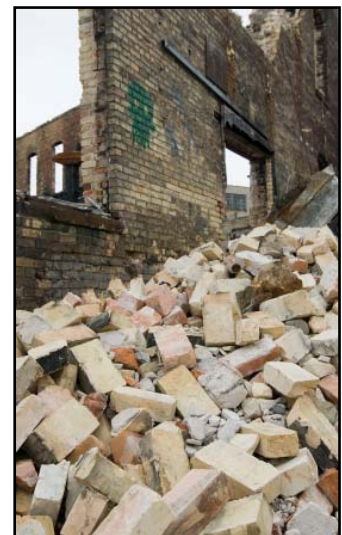
The facilities detailed in this section have been certified by the City of Santa Barbara. They recycle at least 75% of all the waste that enters their facility. The mixed waste facilities sort out the different materials types (wood, concrete, drywall, etc) and send them off to be recycled. Those that accept pure materials such as wood only, or asphalt/concrete only grind them up at the facility and usually sell the material locally. Haulers that take materials to any of these facilities are complying with the terms of the Unscheduled Collection Ordinance. The City is willing to certify facilities that are out of the area. See the Introduction section for contact information if you would like to have a recycling facility considered for certification. Please note that Gold Coast Recycling in Ventura has elected not to be certified.

For your convenience, rate sheets for the Certified Recycling Facilities are included in Appendix B. Rates change annually, so check the date on the rate sheets. *Operators of large projects should always contact the facilities that accept C&D wastes prior to commencement of the work to check for pricing updates and availability.*

The Certified Recycling Facilities listed in Table 1 have the following (possibly not all inclusive) conditions and limitations as outlined below. See the Rate Sheets for Certified C&D Recycling Facilities in Appendix B for details about what they accept and hours of operation.

**Santa Barbara Sand and Topsoil**, Ellwood Canyon Rd, Goleta,  
(805) 966-3909

SB Sand accepts a mix of dirt, rock, concrete, asphalt, roofing, bricks, plaster, and stucco only from a list of approved customers that must be large volume generators, have a communication radio, and a dump truck (or larger) vehicle. Call them to get on the list. They reserve the right to reject any load that is contaminated with organics, and may remove violators from the approved customers list.



**Granite Construction** 5335 Debbie Lane, Goleta, (805) 693-1086

Granite operates a small grinding facility in Goleta that accepts a mix of concrete, asphalt, masonry, rock, and ceramics only. No other materials may be in the mix. Although all commercial and private customers from pickups to dump trucks can bring waste to this facility, they reserve the option to temporarily close the doors if their site is full. They have a larger facility in Buellton that can accept more material. They produce and sell road base from the recycled material that can be backhauled to the job.

**Lash Construction** 5 S. Calle Cesar Chavez, Santa Barbara, (805) 963-3553

Lash operates a small grinding facility in Santa Barbara that accepts a mix of concrete, asphalt, masonry, rock, and ceramics only. No other materials may be in the mix. Although all commercial and private customers from pickups to dump trucks can bring waste to this facility, they reserve the option to temporarily close the doors if their site is full. They produce road base from the recycled material that can be backhauled to the job.

**MarBorg Industries**, 119 Quarantina St Santa Barbara, (805) 963-1852.

MarBorg operates a full scale mixed waste sorting and recycling facility in Santa Barbara that can accept mixed C&D waste and source separated materials. All commercial and private customers from pickups to dump trucks can bring waste to this facility. MarBorg also offers rolloff box hauling service.

**South Coast Recycling and Transfer Station** 4430 Calle Real, Santa Barbara, (805) 681-4345

SCRTS has dumping area for C&D waste that is separate from the trash where the C&D material is sorted and recycled. The C&D waste must be at least 75% mixed wood, green waste, tile, cardboard, brick, concrete, asphalt, masonry, or ceramics as determined by their checker. Loads failing to meet this standard will be charged as trash and not recycled. All commercial and private customers from pickups to dump trucks can bring waste to this facility.

**Progressive Waste/Agrichip** 132 Garden Street, Santa Barbara, Ca, (805) 564-2654

Progressive offers rolloff box hauling service for wood and greenwaste, and recycles materials from the rolloff service that they offer. They also accept wood and greenwaste from some landscapers, but are not open for self haul dropoff.

**Standard Industries** 1905 Lirio Ave, Ventura,  
(805) 643-6669

Standard Industries is a large volume metal recycler that will buy anything metal. They can drop their own rolloffs at a job site. They also have a dropoff site in Ventura. All commercial and private customers from pickups to rolloff trucks can bring metal to this facility. They do not have a rate sheet, so call to determine pricing.



## Appendix A: Resources for Salvage

### REUSE BUSINESSES

These businesses will take possession of salvaged building components items and resell them.

Business	Materials	Terms and Conditions
<p><b>Architectural Salvage</b> 726 Anacapa St. Santa Barbara 965-2446</p>	<p>Vintage items with architectural styling only. Wrought iron gates and grates, doors, windows, plumbing and light fixtures, pedestal sinks, and more.</p>	<ul style="list-style-type: none"> <li>• Will evaluate items before demo.</li> <li>• Will pay for some items.</li> </ul>
<p><b>Demo 2 Design</b> Ph: 805-886-6865 Fax:805-967-1665 <a href="mailto:demo2design@aol.com">demo2design@aol.com</a> <a href="http://www.demo2design.com">www.demo2design.com</a></p> <p><u>To purchase:</u></p> <ul style="list-style-type: none"> <li>• Demo to Design 128 W. Ortega</li> <li>• Cominichi's (Mom's ) 421 E. Cota St</li> </ul> <p><u>Donations:</u> Call for appointment</p>	<p>Solid core doors, windows, clean toilets &amp; sinks (no tubs at present), lighting fixtures, and flooring.</p>	<ul style="list-style-type: none"> <li>• Accepting deconstructed structural building material donations.</li> <li>• Will pick up.</li> </ul>
<p><b>Door and Window Restoration</b> Phone: 452-4433 Corner Quinientos &amp; Nopal</p>	<p>Older and unique doors and windows, lumber, hardware, and fixtures.</p>	<ul style="list-style-type: none"> <li>• Willing to take items on consignment.</li> <li>• Contractors welcome to set up booth on first Sunday of month.</li> </ul>
<p><b>Habitat for Humanity ReStore</b> Phone: 692-2226 <u>To purchase:</u> Call for location <u>Donations:</u> Call for pick-up</p>	<p>Dual glazed windows; solid core doors, cabinetry, bathroom fixtures, lighting, lumber, excess building materials</p>	<ul style="list-style-type: none"> <li>• Will pick up</li> <li>• Must be in usable condition - will evaluate prior to pick-up</li> </ul>
<p><b>TAIPAN</b> Phone:845-5625, <a href="mailto:taipan.presents@yahoo.com">taipan.presents@yahoo.com</a></p>	<p>Vintage and contemporary, architectural details, appliances, furniture, doors, windows, glass, hardware, cabinets, countertops, fireplaces, railings, gates, plumbing and electrical fixtures, stainless, stone, tile, flooring, lumber, molding, decorative iron, skylights, garden, fountains, project leftovers, and more.</p>	<ul style="list-style-type: none"> <li>• Will pick up discarded materials at home/jobsite.</li> <li>• Licensed and insured dismantling services.</li> <li>• Receive qualified advice on how items work with your design or construction.</li> <li>• Consignments for exceptional items.</li> </ul>

## Appendix A: Resources for Salvage

### MATERIAL EXCHANGES

Anyone can sell or give any material directly to a buyer/taker by advertising with these **FREE** services.

#### Instant Internet Posting

These internet-based services will post items and advertise them on their system within about 10 minutes. It may be possible to get a buyer or taker to pick up your material from the site within 24 hours.

Service	Locations Served	Information about site
Craigslist <a href="http://santabarbara.craigslist.org/">http://santabarbara.craigslist.org/</a> or <a href="http://ventura.craigslist.org/">http://ventura.craigslist.org/</a>	Two separate sites specific to Santa Barbara or Ventura County.	Internet-based classified advertising. Follow the link to post an ad. Look at the "For Sale" section.
Cal MAX <a href="http://www.ciwmb.ca.gov/CalMAX/">http://www.ciwmb.ca.gov/CalMAX/</a>	State wide, but divided by county.	State-sponsored industrial material exchange. One-time and recurring ads. Also produces periodical printed version.
VCMAX <a href="http://www.vcmx.org/">http://www.vcmx.org/</a>	Ventura County, but there are some Santa Barbara users.	Ventura County sponsored material exchange. Also produces weekly printed versions.

#### Printed Classified Advertising

The following publications offer free advertising for low cost items

##### Goleta Valley Voice

Goleta residents can get free delivery of the Voice, or shop ads at <http://www.goletavalleyvoice.com>. Free ads for merchandise priced at \$50 and less. Place ads by calling 683-7657.


##### Santa Barbara Independent

Shop ads at <http://www.independent.com>. Place ads by calling 965-5208. Free *Treasure Hunt* ads for a single item priced at \$80 or less. Email ads to [treasurehunt@independent.com](mailto:treasurehunt@independent.com).

##### Santa Barbara News Press

In addition to standard classifieds, the News Press offers the *Building Materials Exchange* on Wednesdays, and the free *Classified Attic* for merchandise priced at \$75 or less on Tuesdays. Shop ads in the paper, or at <http://www.newspress.com>. *Classified Attic* ads are not available on line. Place ads at <http://class.newspress.com>, or call 963-4391.


**Appendix B: Rate Sheets for Certified C&D Recycling Facilities**

	<b>MarBorg Construction &amp; Debris Recycling Center</b> 119 Quarantina St Santa Barbara 805-963-1852	Valid through July 1 2008
	<b>Hours</b> Mon-Fri 7:00am - 5:00pm, Sat 7:00am - 4:00pm	
<b>Material</b>	<b>Minimum</b>	<b>Fee</b>
Mixed C&D Debris	\$20	\$67/ton
Mixed C&D Debris with automated dumper	\$20	\$62/ton
Concrete (clean)	\$20	\$15/ton
Dirt (clean)	\$20	\$15/ton
Rubble	\$20	\$25/ton
Wood & Greenwaste	\$20	\$40/ton
Refrigerators, Freezers, A/C Units		\$10 ea.
Metal (appliances, cars (junk slip is needed and gas tank must be removed))		Free
Cardboard		Free
Televisions & Monitors		Free

<b>Santa Barbara Sand &amp; Topsoil</b> Ellwood Canyon Rd, Goleta 805-966-3909			
<b>Hours</b> Mon-Fri 7:30am - 2:30pm			
<b>Material</b>		<b>Fee</b>	
		Bobtail, 2 axel	Ten wheeler 3 axel
Concrete/Asphalt, less than 3 x3, no rebar	\$25-35	\$35-50	\$50-75
Concrete/Asphalt, less than 3 x3, rebar cut flush	\$55	\$75	\$100
Concrete/Asphalt with petro, cut flush	\$75	\$95	\$150
Rubble	\$95	\$125	\$200-300
Dirt (clean)	\$25	\$50	\$75

**Appendix B: Rate Sheets for Certified C&D Recycling Facilities**

<p><b>Lash Construction Inc. Recycling Yard</b>                  5 S. Calle Cesar Chevez, (between Vulcan and RR tracks),                  Santa Barbara                  805-963-3553</p>				Valid through July 1 2008
<b>Hours</b>	Mon-Fri 8:00am - 4:30pm			
<b>Material</b>		<b>Fee</b>		
		Small flatbed, pickup	Bobtail, large flatbed	Ten wheeler End Dump
Concrete/Asphalt, no rebar (clean)		\$35	\$55	\$100 \$175
<b>Recycled Base Sales</b>				
			<b>Price</b>	
Recycled base			\$10.50/ton (weight estimated)	

	<p><b>Granite Recycling Facility</b>                  5335 Debbie Lane, Goleta                  (805) 693-1086</p>		Prices subject to change
	<p><b>Hours:</b> Mon-Fri 7:00am - 3:00pm (closed on major holidays)</p>		
<b>Material</b>		<b>Fee</b>	
Minimum charge		\$25	
Concrete/Asphalt/Masonry/Ceramics, less than 2x2x1, rebar cut flush		\$7/ton	
Concrete/Asphalt/Masonry/Ceramics, less than 3x3x1, rebar cut flush		\$125/ton	
<b>Recycled Base Sales</b>			
		Price on account	Price COD
Class II recycled base		\$11/ton	\$12/ton

**Appendix B: Rate Sheets for Certified C&D Recycling Facilities**

<p><b>Progressive Waste Management, Inc./Agrichip</b>                  132 Garden Street, Santa Barbara, Ca                  Corner Of Garden St. &amp; Yanonali                  805-564-2654 &amp; 805-962-7005</p>			
<b>Hours</b>	Mon-Sat 7:00am - 5:00pm closed on major holidays		
<b>Material</b>		<b>Minimum</b>	<b>Fee</b>
Green Waste		\$20.00	\$40.00/ton
Wood Waste (Clean, Non-Painted)		\$20.00	\$40.00/ton
Palm Fronds & Yucca Stumps - (Hard To Handle)		\$28.00 \$35.00	\$55.00/ton \$65.00/ton

<p><b>South Coast Recycling &amp; Transfer Station</b>                  4430 Calle Real, Santa Barnbara                  805-681-4345</p>			Valid through July 1 2008
<b>Hours</b>	Mon-Sat 7:00am - 5:00pm closed on major holidays		
<b>Material</b>		<b>Minimum</b>	<b>Fee</b>
Mixed C&D Debris (must be 75% rubble, wood/greenwaste, metal)		\$17.50	\$59.50/ton
Trash		\$16/ton	\$71.50/ton
Greenwaste		\$9/ton	\$28/ton
Wood		\$9/ton	\$35/ton
Hard to Handle (logs greater than 24" in diameter or longer than 9', vehicles, mobile homes, trailers, boats)			\$80/ton
Alliances without freon			free
Refrigerators, Freezers, A/C Units			\$10 ea.
Metal		\$7.50	\$22/ton
Dirt (clean)			\$4/ton
Televisions & Monitors			Free
Other Electronics (per item charge for businesses)			\$2.50-\$15 ea
Tires (fee depends on size)			\$2-100 ea

## Appendix C: List of Permitted Haulers

The following haulers have a permit pending from the City of Santa Barbara to transport construction waste. Please note that smaller haulers with a gross vehicle weight of less than seven tons are not required to have a permit.

Allied Waste Industries/BFI	(805) 965-5248
Big Red Box	(805) 689-9204
MarBorg Industries	(805) 963-1852
Progressive Waste Management Inc.	(805) 564-2654
Lash Construction Inc.	(805) 963-3553
Schwann Brothers Excavation Inc.	(805) 683-5116
Melgoza-Odale Inc.	(805) 966-4729